



Calade
T902



TUNTEX™

Calade

Inspired by the natural textures of Provence's cobblestone streets, T902 Calade features an asymmetrical stone pattern, with each graphic variation evoking French effortless romance. The cut-pile construction gives the carpet a visually rugged yet soft-to-the-touch feel, creating a compelling contrast.





T90204 Ashlar



T90204 / T90205 Ashlar



T90202 Brick



T90207 Ashlar







T90206 Brick



T90204 Brick



T90201 / T90207 Quarter-Turn



T90201 Coin



T90202 Fossil



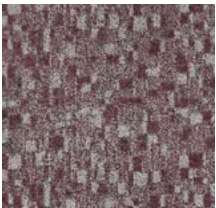
T90203 Shadow



T90204 Greige



T90205 Walnut



T90206 Wine



T90207 Denim

| | |
|------------------|---|
| Style | T902 "Calade" |
| Construction | High Cut Low Loop |
| Pile Fibre | nexlon™ Premium Solution Dyed Nylon featured with aircell |
| Dye Method | Solution Dyed |
| Gauge | 1 / 10G |
| Pile Height | 8.0 / 4.7mm |
| Total Thickness | 9.5mm(±0.5mm) |
| Tile size | 500mm x 500mm |
| Total Weight | Approx. 5250g/m² |
| Secondary Back | TUNTEX Duraback |
| Stain Resistance | Stainshield Treatment: STAIN SHIELD™ |
| Soil Resistance | Soil Guard Treatment: SOIL GUARD™ |

| | |
|-----------------------|--|
| Wear Warranty | Product is warranted not to lose more than 10% pile fibre by weight in normal commercial use within 15 years. |
| Colour Fastness | 15 Year Warranty AATCC 16. Grade 4 - Little or no change. |
| Static Electricity | Permanent Lifetime Protection - less than 2.0 KV. |
| Dimensional Stability | Warranted not to change in size by more than 0.5 mm in normal use. Will not dome or dish in normal use. |
| Installation | Tackifier or Releasable adhesive Recommended. |
| Sustainability | All yarns used are Solution dyed to minimise use of water and exclude any effluent production. ISO 14001 and ISO 9001. |

Health Product Declaration (HPD) Third Party verified by U.S. GreenCircle Certified.

U.S. CRI Green Label Plus Certificate.

Singapore Green Building Council Product Certificate - 4 Ticks "Leader".

Passes ASTM Flammability Test.
Flammability: Passes (ASTM E648)
Smoke Density: Passes (ASTM E662)

Passes AATCC Static Propensity Test.
Static Propensity: ≤ 2.0 KV (AATCC 134)

Passes the Quality Test of China National Carpet Quality Test Center.

Passes the Flammability Test and Environmental Protection Test of the China National Fire and Construction Quality Surveillance Center.

ISO 9001 Quality Management System.

ISO 14001 Environmental Management System.

ISO 45001 Healthy & Safety Management System.



