

Dune T693  
Ripple T852

# Dune & Ripple Collection

TUNTEX™



# Dune & Ripple

| T693 & T852  
product insight

T693 Dune and T852 Ripple combine and create a balanced and dynamic spatial atmosphere with their unique organic undulations and layered triangular patterns.

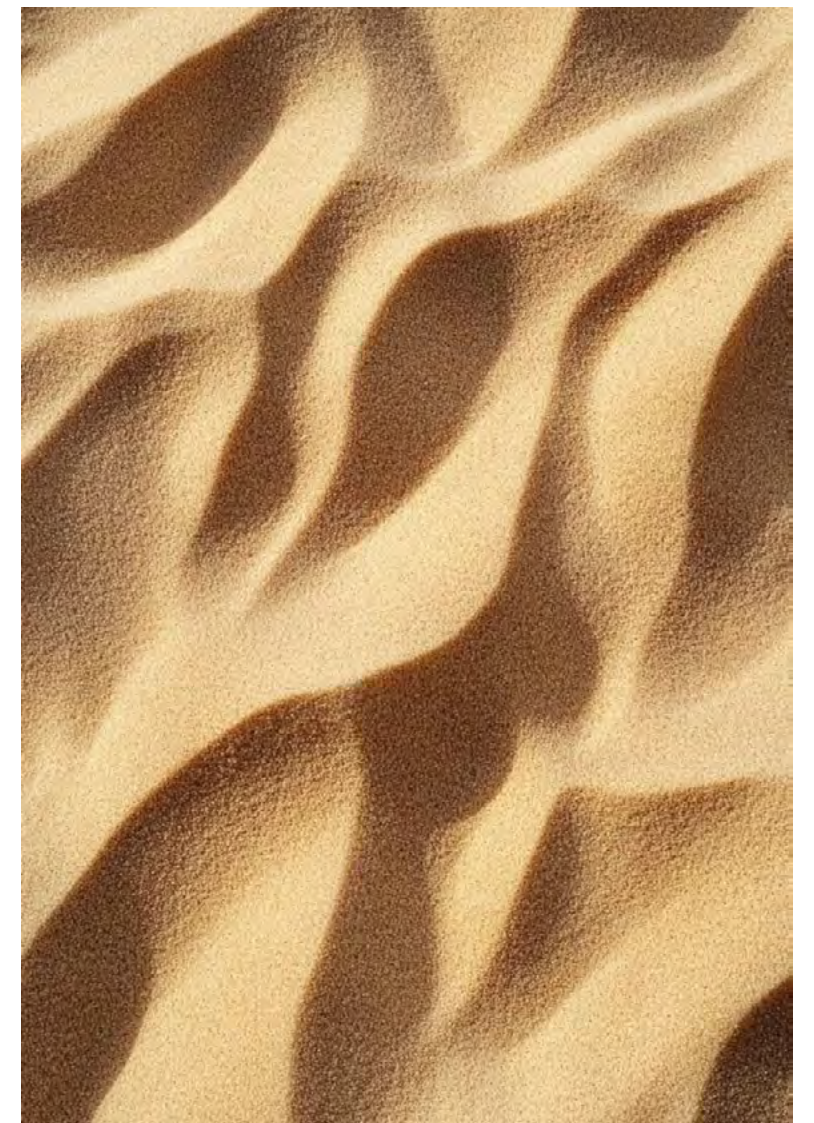


T69305 / T69309 / T85217 / T85218 Random





T69306 / T69310 Quarter-Turn



T693 Dune interprets the rhythm of sand dunes with flowing lines, where interwoven light browns and deep blues replicate wind-eroded traces. Cool grays, warm browns, and light greens intertwine like the play of light and shadow in morning mist, scorching sun, and an oasis. Its fine texture mimics the feel of sand, infusing spaces with a naturally flowing poetry that softens the rigidity of modern structures.





T69307 / T69308 Brick



T69301 / T69306 Brick





T69305 / T69306 Quarter-Turn



T69305 / T69306 Brick





T69302 / T69303 Brick



T69304 Brick





T852 Ripple features layered triangles that simulate the dynamic ripples of water, with green and blue tones capturing the shifting hues of the sea. This collection translates tranquil poetry through geometric language, where continuous lines subtly echo Eastern philosophy, allowing poetic beauty to flow within abstract forms.

T852  
product insight



T85211 / T85214 Ashlar









T85211 / T85214 / T85215 / T85216 Ashlar



T69307 / T85211 / T85214 Random





T69306 / T69310 / T85215 Random



T69306 / T69310 Brick









T69309 / T85217 / T85218 Random

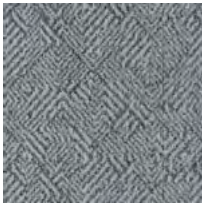


T85216 Ashlar

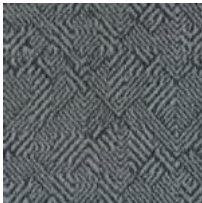




T69306 / T69310   Quarter-Turn



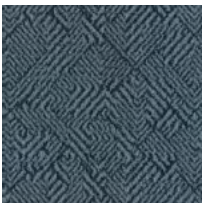
T69301  
Coin



T69302  
Anchor



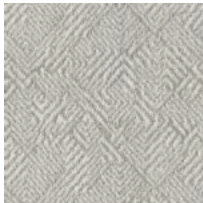
T69303  
Pebble



T69304  
Aegean



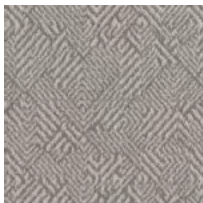
T69305  
Sage



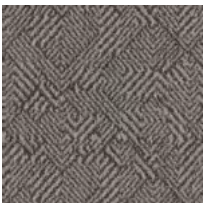
T69306  
Beige



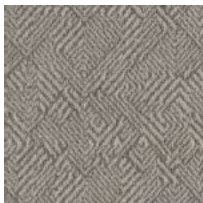
T69307  
Sugar Cookie



T69308  
Brunette



T69309  
Umber



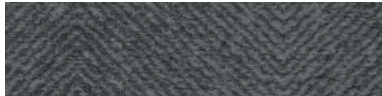
T69310  
Oat



T85211 Coin



T85212 Anchor



T85213 Pebble



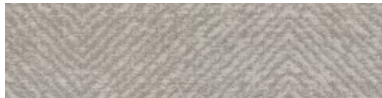
T85214 Aegean



T85215 Sage



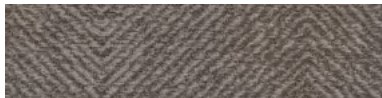
T85216 Beige



T85217 Sugar Cookie



T85218 Brunette



T85219 Umber



T85220 Oat

Style	T693 "Dune"   T852 "Ripple"
Construction	T693 - Hi / Lo Loop   T852 - Hi / Mid / Lo Loop
Pile Fibre	nexlon™ Premium Solution Dyed Nylon featured with aircell
Dye Method	Solution Dyed
Gauge	1 / 12G
Pile Height	T693 - 6.5 / 3.5mm   T852 - 6.0 / 5.0 / 3.5mm
Total Thickness	T693 - 7.9mm(±0.5mm)   T852 - 7.0mm(±0.5mm)
Tile size	T693 - 500mm x 500mm   T852 - 250mm x 1000mm
Total Weight	Approx. 4900g/m <sup>2</sup>
Secondary Back	TUNTEX Duraback
Stain Resistance	Stainshield Treatment: <b>STAIN</b> SHIELD™
Soil Resistance	Soil Guard Treatment: <b>SOIL</b> GUARD™

Wear Warranty	Product is warranted not to lose more than 10% pile fibre by weight in normal commercial use within 15 years.
Colour Fastness	15 Year Warranty AATCC 16. Grade 4 - Little or no change.
Static Electricity	Permanent Lifetime Protection - less than 2.0 KV.
Dimensional Stability	Warranted not to change in size by more than 0.5 mm in normal use. Will not dome or dish in normal use.
Installation	Tackifier or Releasable adhesive Recommended.
Sustainability	All yarns used are Solution dyed to minimise use of water and exclude any effluent production. ISO 14001 and ISO 9001.

Health Product Declaration (HPD).

U.S. CRI Green Label Plus Certificate.

Singapore Green Building Council Product Certificate - 4 Ticks "Leader".

Passes ASTM Flammability Test.  
Flammability: Passes (ASTM E648)  
Smoke Density: Passes (ASTM E662)

Passes AATCC Static Propensity Test.  
Static Propensity: ≤ 2.0 KV (AATCC 134)

Passes the Quality Test of China National Carpet Quality Test Center.

Passes the Flammability Test and Environmental Protection Test of the China National Fire and Construction Quality Surveillance Center.

ISO 9001 Quality Management System.

ISO 14001 Environmental Management System.

ISO 45001 Healthy & Safety Management System.





