



T69305 / T69309 / T85217 / T85218 Random

TUNTEX™

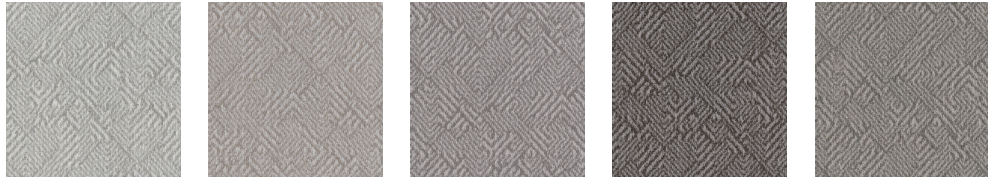


Dune T693
Ripple T852





T69301 Coin T69302 Anchor T69303 Pebble T69304 Aegean T69305 Sage



T69306 Beige T69307 Sugar Cookie T69308 Brunette T69309 Umber T69310 Oat



T85211 Coin T85212 Anchor T85213 Pebble T85214 Aegean T85215 Sage T85216 Beige T85217 Sugar Cookie T85218 Brunette T85219 Umber T85220 Oat

Style	T693 "Dune" T852 "Ripple"
Construction	T693 - Hi / Lo Loop T852 - Hi / Mid / Lo Loop
Pile Fibre	nexlon™ Premium Solution Dyed Nylon featured with aircell
Dye Method	Solution Dyed
Gauge	1 / 12G
Pile Height	T693 - 6.5 / 3.5mm T852 - 6.0 / 5.0 / 3.5mm
Tile size	T693 - 500mm x 500mm T852 - 250mm x 1000mm
Secondary Back	TUNTEX Duraback
Stain Resistance	Stainshield Treatment: STAIN SHIELD™
Soil Resistance	Soil Guard Treatment: SOIL GUARD™

Wear Warranty	Product is warranted not to lose more than 10% pile fibre by weight in normal commercial use within 15 years.
Colour Fastness	15 Year Warranty AATCC 16. Grade 4 - Little or no change.
Static Electricity	Permanent Lifetime Protection - less than 2.0 KV.
Dimensional Stability	Warranted not to change in size by more than 0.5 mm in normal use. Will not dome or dish in normal use.
Installation	Tackifier or Releasable adhesive Recommended.
Sustainability	All yarns used are Solution dyed to minimise use of water and exclude any effluent production. ISO 14001 and ISO 9001.



T69306 / T69310 Quarter-Turn

Dune & Ripple

T693 & T852
product insight

T693 Dune and T852 Ripple combine and create a balanced and dynamic spatial atmosphere with their unique organic undulations and layered triangular patterns.



T69305 / T69306 Brick



T69304 / T85211 / T85212 / T85213 / T85214 Random