

Dune T693
Ripple T852

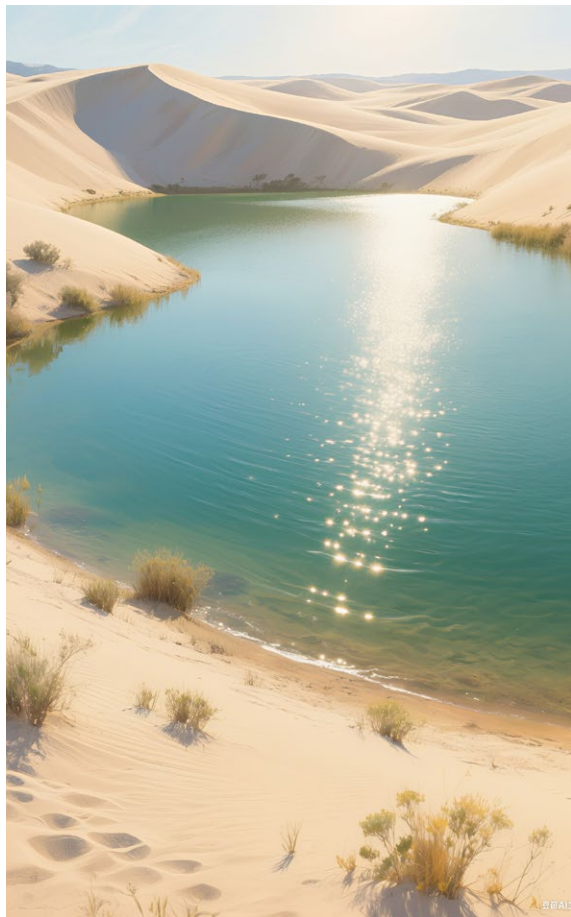


TUNTEX™

Dune & Ripple

| T693 & T852
product insight

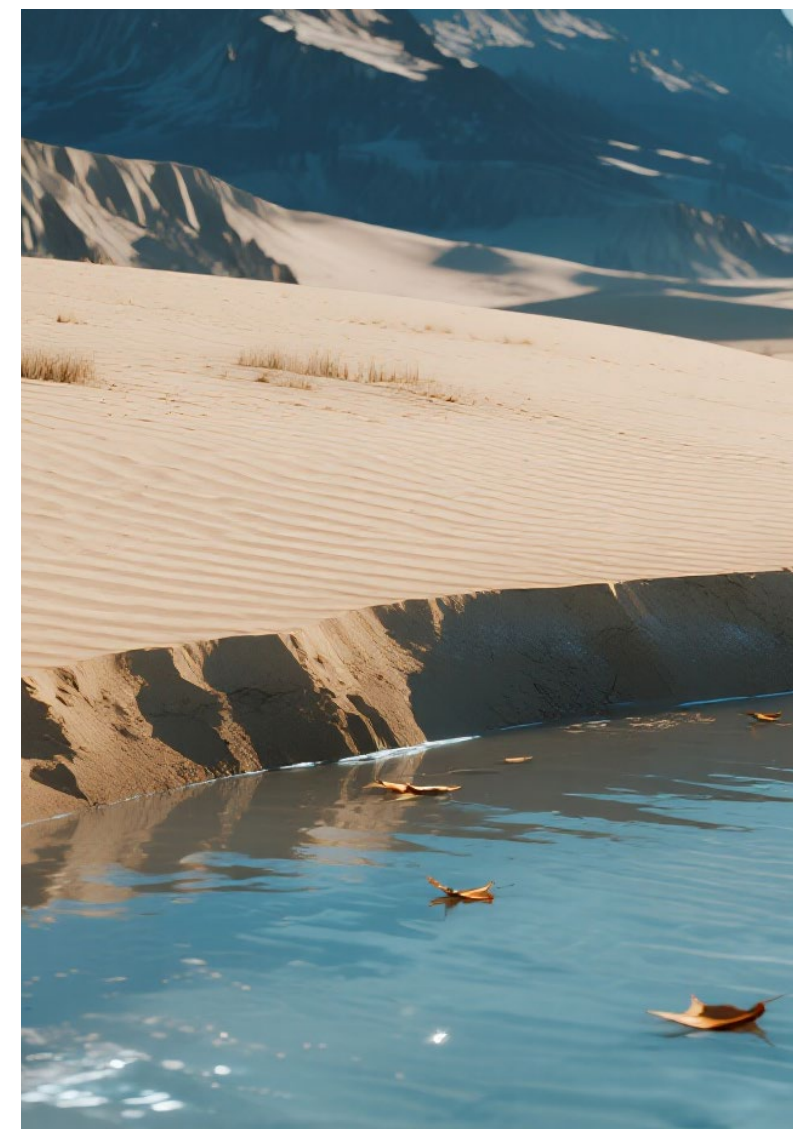
T693 Dune and T852 Ripple combine and create a balanced and dynamic spatial atmosphere with their unique organic undulations and layered triangular patterns.



T69305 / T69309 / T85217 / T85218 Random



T69306 / T69310 Quarter-Turn



T693 Dune interprets the rhythm of sand dunes with flowing lines, where interwoven light browns and deep blues replicate wind-eroded traces. Cool grays, warm browns, and light greens intertwine like the play of light and shadow in morning mist, scorching sun, and an oasis. Its fine texture mimics the feel of sand, infusing spaces with a naturally flowing poetry that softens the rigidity of modern structures.



T69305 / T69306 Brick



T69305 / T69306 Quarter-Turn



T852 Ripple features layered triangles that simulate the dynamic ripples of water, with green and blue tones capturing the shifting hues of the sea. This collection translates tranquil poetry through geometric language, where continuous lines subtly echo Eastern philosophy, allowing poetic beauty to flow within abstract forms.

T852
product insight



T85211 / T85214 Ashlar





T85211 / T85214 / T85215 / T85216 Ashlar



T69307 / T85211 / T85214 Random





T69309 / T85217 / T85218 Random



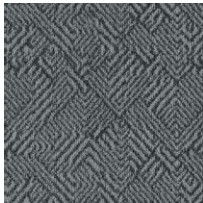
T85216 Ashlar



T69306 / T69310 Quarter-Turn



T69301 Coin



T69302 Anchor



T69303 Pebble



T69304 Aegean



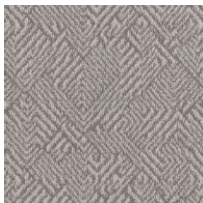
T69305 Sage



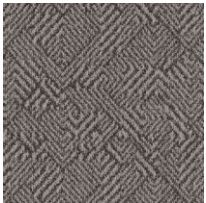
T69306 Beige



T69307 Sugar
Cookie



T69308 Brunette



T69309 Umber



T69310 Oat



T85211 Coin



T85212 Anchor



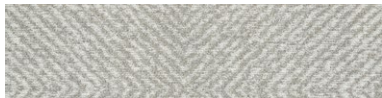
T85213 Pebble



T85214 Aegean



T85215 Sage



T85216 Beige



T85217 Sugar Cookie



T85218 Brunette



T85219 Umber



T85220 Oat

Style	T693 "Dune" T852 "Ripple"
Construction	T693 - Hi / Lo Loop T852 - Hi / Mid / Lo Loop
Pile Fibre	nexlon™ Premium Solution Dyed Nylon featured with aircell
Dye Method	Solution Dyed
Gauge	1 / 12G
Pile Height	T693 - 6.5 / 3.5mm T852 - 6.0 / 5.0 / 3.5mm
Total Thickness	T693 - 7.9mm(±0.5mm) T852 - 7.0mm(±0.5mm)
Tile size	T693 - 500mm x 500mm T852 - 250mm x 1000mm
Total Weight	Approx. 4900g/m ²
Secondary Back	TUNTEX Duraback
Stain Resistance	Stainshield Treatment: STAIN SHIELD™
Soil Resistance	Soil Guard Treatment: SOIL GUARD™

Wear Warranty	Product is warranted not to lose more than 10% pile fibre by weight in normal commercial use within 15 years.
Colour Fastness	15 Year Warranty AATCC 16. Grade 4 - Little or no change.
Static Electricity	Permanent Lifetime Protection - less than 2.0 KV.
Dimensional Stability	Warranted not to change in size by more than 0.5 mm in normal use. Will not dome or dish in normal use.
Installation	Tackifier or Releasable adhesive Recommended.
Sustainability	All yarns used are Solution dyed to minimise use of water and exclude any effluent production. ISO 14001 and ISO 9001.

Health Product Declaration (HPD).

U.S. CRI Green Label Plus Certificate.

Singapore Green Building Council Product Certificate - 4 Ticks "Leader".

Passes ASTM Flammability Test.
Flammability: Passes (ASTM E648)
Smoke Density: Passes (ASTM E662)

Passes AATCC Static Propensity Test.
Static Propensity: ≤ 2.0 KV (AATCC 134)

Passes the Quality Test of China National Carpet Quality Test Center.

Passes the Flammability Test and Environmental Protection Test of the China National Fire and Construction Quality Surveillance Center.

ISO 9001 Quality Management System.

ISO 14001 Environmental Management System.

ISO 45001 Healthy & Safety Management System.



