



Piazza Navona

LA09

TUNTEX™

Piazza Navona

LA09 Piazza Navona draws inspiration from Rome's iconic Piazza Navona, capturing the timeless beauty of its weathered limestone facades. The design recreates the mottled textures and sun-warmed tones of aged stone, juxtaposing organic irregularities with precise geometric patterns. This interplay of rough, natural aesthetics and structured lines evokes the piazza's dynamic energy, translating centuries of architectural heritage into a contemporary floorscape.

Paired with the newly launched LuxCushion™ Air backing, it provides just the right amount of support to deliver a comfortable underfoot experience.









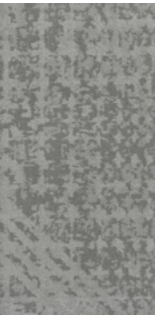




LA0905 Herringbone



LA0901
Terracotta



LA0902
Baroque



LA0903
Statue



LA0904
Obelisk



LA0905
Trevi Fountain

Style	LA09 "Piazza Navona"
Construction	Multi Hi / Lo Loop
Pile Fibre	nexlon™ Premium Solution Dyed Nylon featured with aircell
Dye Method	Solution Dyed
Gauge	1 / 10G
Pile Height	6.5 - 3.5mm
Total Thickness	10.5mm(±0.5mm)
Tile size	500mm x 1000mm
Total Weight	Approx. 3250g/m²
Secondary Back	LUXCUSHION™
Stain Resistance	Stainshield Treatment: STAIN SHIELD™
Soil Resistance	Soil Guard Treatment: SOIL GUARD™
Odor Reducer	Ecofresh Treatment: ECO FRESH™
Anti-microbial	Microshield Treatment: MICRO SHIELD™

Wear Warranty	Product is warranted not to lose more than 10% pile fibre by weight in normal commercial use within 15 years.
Colour Fastness	15 Year Warranty AATCC 16. Grade 4 - Little or no change.
Static Electricity	Permanent Lifetime Protection - less than 2.0 KV.
Dimensional Stability	Warranted not to change in size by more than 0.5 mm in normal use. Will not dome or dish in normal use.
Installation	Tackifier or Releasable adhesive Recommended.
Sustainability	All yarns used are Solution dyed to minimise use of water and exclude any effluent production. ISO 14001 and ISO 9001.

Health Product Declaration (HPD).
U.S. CRI Green Label Plus Certificate.
Singapore Green Building Council Product Certificate - 4 Ticks "Leader".
Passes ASTM Flammability Test. Flammability: Passes (ASTM E648) Smoke Density: Passes (ASTM E662)
Passes AATCC Static Propensity Test. Static Propensity: ≤ 2.0 KV (AATCC 134)
Passes the Quality Test of China National Carpet Quality Test Center.
Passes the Flammability Test and Environmental Protection Test of the China National Fire and Construction Quality Surveillance Center.
ISO 9001 Quality Management System.
ISO 14001 Environmental Management System.
ISO 45001 Healthy & Safety Management System.



