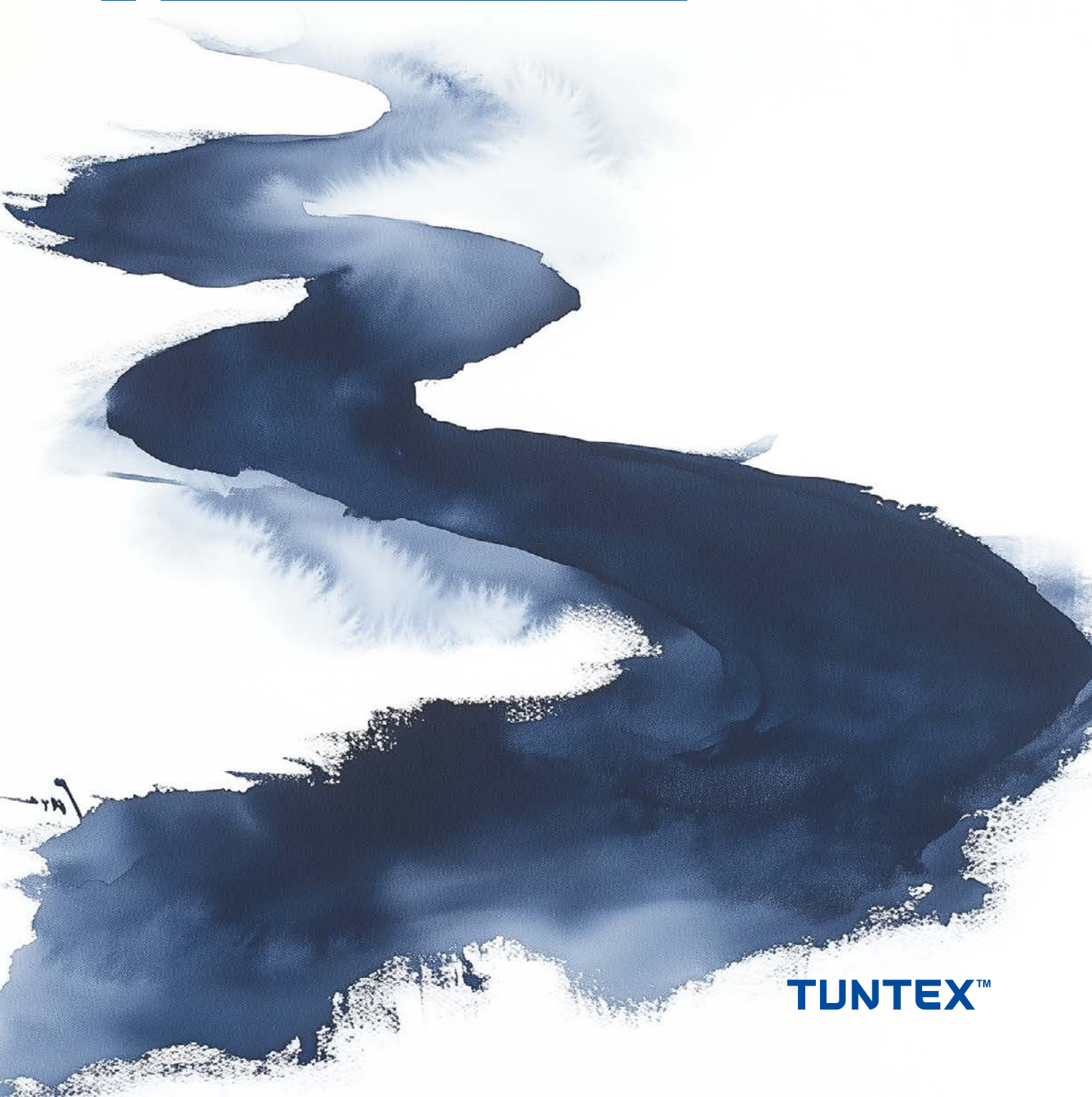


**Ink Whisper LA10**  
**Ink Bloom T730**



**TUNTEX™**




# Moyin Collection

## LA10 & T730

The color inspiration for this series comes from traditional Chinese Art, selecting warm and soft Eastern tones such as indigo, turquoise, and greige. These colors can reduce visual pressure and promote mental relaxation.

Meanwhile, paired with the newly launched LuxCushion™ Air backing, it provides just the right amount of support to deliver a comfortable underfoot experience.





# LA10

## Ink Whisper

The straightness of bamboo intertwines with the softness of flowers, forming a unique and irregular pattern.

The color inspiration for this series comes from traditional Chinese Art, selecting warm and soft tones such as indigo, turquoise, and greige. These colors are often associated with stress reduction and promote mental relaxation.







LA1001 Ashlar



LA1002 Ashlar





LA1001 Ashlar



LA1005 Ashlar









LA1003 Herringbone



LA1001 Ashlar













LA1004 Ashlar



LA1004 Basketweave





LA1005 Ashlar



LA1002 Ashlar



# T730 Ink Bloom

Ink Bloom draws inspiration from the grandeur of Chinese floral watercolors, where lush peonies bloom in bold, expressive strokes. Rich indigos and soft turquoise hues evoke the depth of ink-wash paintings, translating traditional artistry into contemporary elegance.

Designed to create serene yet striking spaces, this pattern balances vibrant botanical motifs with soothing tones—offering both visual impact and a calming ambiance.







T73006 Brick







The elegant form and vitality of nature are integrated into the design, embellished on the carpet surface, like a flowing natural painting.







T73003 Quarter-Turn











T73004 Ashlar



T73004 Brick

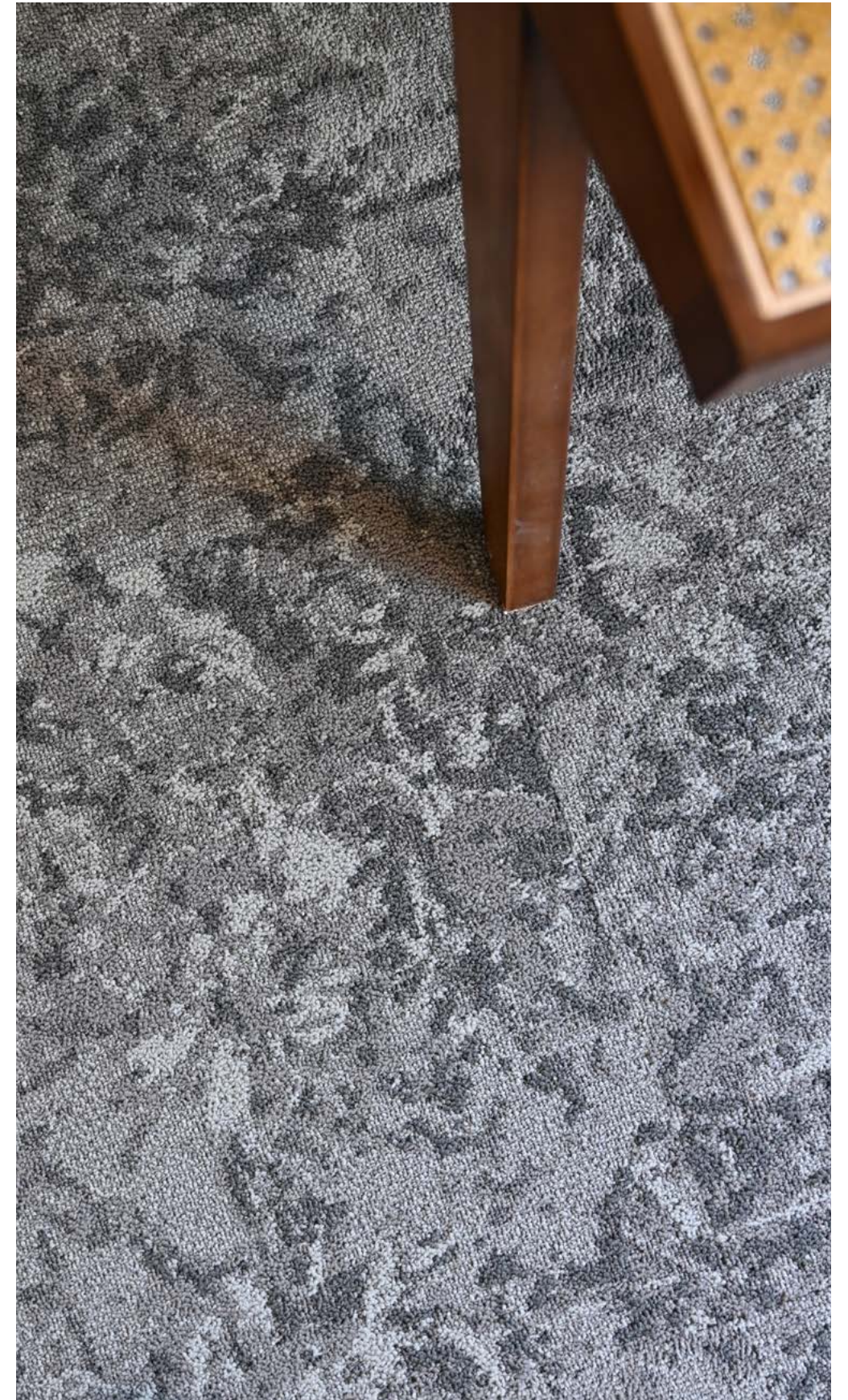








T73002 Ashlar



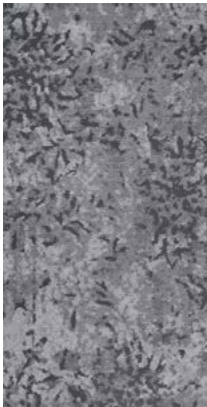








LA1001  
Rouge



LA1002  
Obsidian



LA1003  
Azure



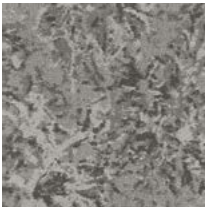
LA1004  
Indigo



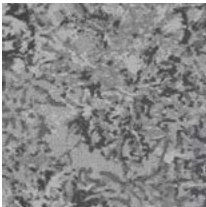
LA1005  
Pine Green



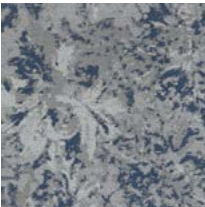
LA1006  
Verdigris



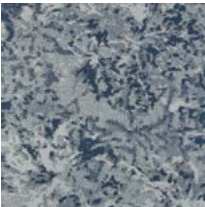
T73001  
Rouge



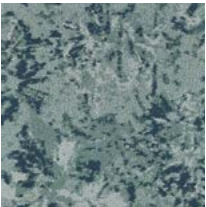
T73002  
Obsidian



T73003  
Azure



T73004  
Indigo



T73006  
Verdigris

Style	LA10 "Ink Whisper"
Construction	Multi Hi / Lo Loop
Pile Fibre	nexlon™ Premium Solution Dyed Nylon featured with aircell
Dye Method	Solution Dyed
Gauge	1/10 G
Pile Height	5.5 - 3.5 mm
Total Thickness	11.5mm(±0.5mm)
Tile size	500mm x 1000mm
Total Weight	Approx. 3350 g/m <sup>2</sup>
Secondary Back	LUXCUSHION™

Style	T730 "Ink Bloom"
Construction	Multi Hi / Lo Loop
Pile Fibre	nexlon™ Premium Solution Dyed Nylon featured with aircell
Dye Method	Solution Dyed
Gauge	1/10 G
Pile Height	4.5 - 3.0 mm
Total Thickness	8.0mm(±0.5mm)
Tile size	500mm x 500mm
Total Weight	Approx. 6150 g/m <sup>2</sup>
Secondary Back	TUNTEX Duraback

Stain Resistance	Stainshield Treatment: <b>STAIN</b> SHIELD™
Soil Resistance	Soil Guard Treatment: <b>SOIL</b> GUARD™
Odor Reducer	Ecofresh Treatment: <b>ECO</b> FRESH™
Anti-microbial	Microshield Treatment: <b>MICRO</b> SHIELD™
Wear Warranty	Product is warranted not to lose more than 10% pile fibre by weight in normal commercial use within 15 years.
Colour Fastness	15 Year Warranty AATCC 16. Grade 4 - Little or no change.
Static Electricity	Permanent Lifetime Protection - less than 2.0 KV.
Dimensional Stability	Warranted not to change in size by more than 0.5 mm in normal use. Will not dome or dish in normal use.
Installation	Tackifier or Releasable adhesive Recommended.
Sustainability	All yarns used are Solution dyed to minimise use of water and exclude any effluent production. ISO 14001 and ISO 9001.

Health Product Declaration (HPD).
U.S. CRI Green Label Plus Certificate.
Singapore Green Building Council Product Certificate - 4 Ticks "Leader".
Passes ASTM Flammability Test. Flammability: Passes (ASTM E648) Smoke Density: Passes (ASTM E662)
Passes AATCC Static Propensity Test. Static Propensity: ≤ 2.0 KV (AATCC 134)
Passes the Quality Test of China National Carpet Quality Test Center.
Passes the Flammability Test and Environmental Protection Test of the China National Fire and Construction Quality Surveillance Center.
ISO 9001 Quality Management System.
ISO 14001 Environmental Management System.
ISO 45001 Healthy & Safety Management System.





