



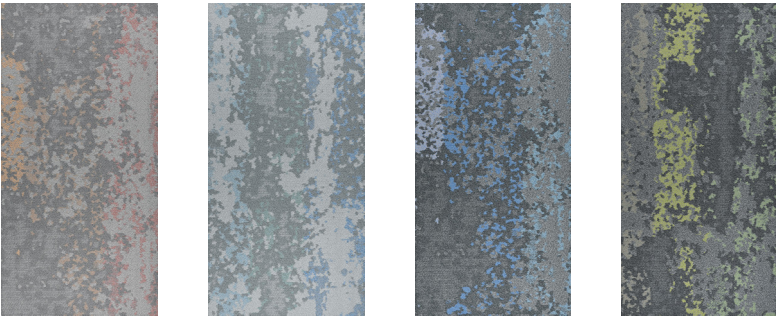
LA1107 / LA1108 Ashlar

TUNTEX™

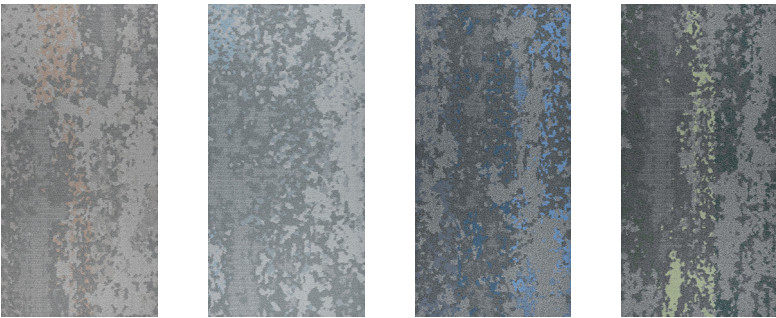


Stratum
LA11





LA1101 Paleosol
LA1103 Apatite
LA1105 Lazuli
LA1107 Epidote



LA1102 Pyrite
LA1104 Celestite
LA1106 Lolite
LA1108 Greenstone

Style	LA11 "Stratum"
Construction	Multi Hi / Lo Loop
Pile Fibre	nexlon™ Premium Solution Dyed Nylon featured with aircell
Dye Method	Solution Dyed
Gauge	1/10 G
Pile Height	6.0 - 3.0 mm
Tile size	500mm x 1000mm
Secondary Back	LUXCUSHION™
Stain Resistance	Stainshield Treatment: STAIN SHIELD™
Soil Resistance	Soil Guard Treatment: SOIL GUARD™
Odor Reducer	Ecofresh Treatment: ECO FRESH™
Anti-microbial	Microshield Treatment: MICRO SHIELD™

Wear Warranty	Product is warranted not to lose more than 10% pile fibre by weight in normal commercial use within 15 years.
Colour Fastness	15 Year Warranty AATCC 16. Grade 4 - Little or no change.
Static Electricity	Permanent Lifetime Protection - less than 2.0 KV.
Dimensional Stability	Warranted not to change in size by more than 0.5 mm in normal use. Will not dome or dish in normal use.
Installation	Tackifier or Releasable adhesive Recommended.
Sustainability	All yarns used are Solution dyed to minimise use of water and exclude any effluent production. ISO 14001 and ISO 9001.



LA1105 / LA1106 Herringbone

Stratum

LA11
product insight

Over millions of years, the forces of nature—wind erosion, flowing water—have carved overlapping textures into layers of rock, leaving behind the Earth's unique signature. LA11 Stratum translates this dynamic, natural stratification into a visual language for carpet, offering a flooring solution where functionality meets artistry.

Paired with the newly launched LuxCushion™ Air backing, it delivers just the right amount of support while offering a soothing, cushioned experience underfoot.



LA1103 / LA1104 Ashlar



LA1101 Herringbone