

Ice Shards

T871



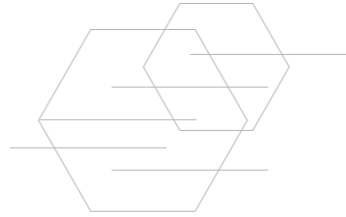
TUNTEX™

Geometry in Nature

Geometry in Nature collection explores the power and mystery of the earth. T861 Bumblebees, T871 Ice Shards, and T896 Snowflakes interpret the iconic shapes that show up in nature.



T871 Ice Shards is inspired by the natural lines of cracked ice that are aesthetically pleasing. The use of neutral colors makes it practical and versatile for various settings while maintaining its visual appeal.





T87101 / T87104 Ashlar



T87101 / T87103 Monolithic



T87104 / T87105 / T87106 Ashlar



T87104 / T87106 Basketweave



T87102 / T87108 / T87109 Ashlar



T87102 / T87104 Herringbone



T87108 Herringbone



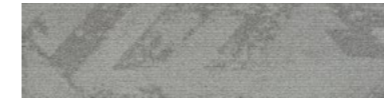
T87101 Tan



T87102 Hazel wood



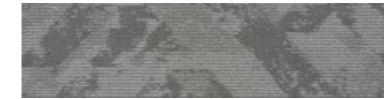
T87103 Sand



T87104 Coin



T87105 Anchor



T87106 Shadow



T87108 Aegean



T87109 Spruce

Style	T871 "Ice Shards"
Construction	Hi / Lo Loop
Pile Fibre	nexlon™ Premium Solution Dyed Nylon featured with aircell
Dye Method	Solution Dyed
Gauge	1 / 12G
Pile Height	5.8 / 3.0mm
Total Thickness	7.2mm(±0.5mm)
Tile size	250mm x 1000mm
Total Weight	Approx. 5000g / m ²
Secondary Back	TUNTEX Duraback
Stain Resistance	Stainshield Treatment: STAIN SHIELD™
Soil Resistance	Soil Guard Treatment: SOIL GUARD™

Wear Warranty	Product is warranted not to lose more than 10% pile fibre by weight in normal commercial use within 15 years.
Colour Fastness	15 Year Warranty AATCC 16. Grade 4 - Little or no change.
Static Electricity	Permanent Lifetime Protection - less than 2.0 KV.
Dimensional Stability	Warranted not to change in size by more than 0.5 mm in normal use. Will not dome or dish in normal use.
Installation	Tackifier or Releasable adhesive Recommended.
Sustainability	All yarns used are Solution dyed to minimise use of water and exclude any effluent production. ISO 14001 and ISO 9001.

Health Product Declaration (HPD) Third Party verified by U.S. GreenCircle Certified.

U.S. CRI Green Label Plus Certificate.

Singapore Green Building Council Product Certificate - 4 Ticks "Leader".

Passes ASTM Flammability Test.
Flammability: Passes (ASTM E648)
Smoke Density: Passes (ASTM E662)

Passes AATCC Static Propensity Test.
Static Propensity: ≤ 2.0 KV (AATCC 134)

Passes the Quality Test of China National Carpet Quality Test Center.

Passes the Flammability Test and Environmental Protection Test of the China National Fire and Construction Quality Surveillance Center.

ISO 9001 Quality Management System.

ISO 14001 Environmental Management System.

ISO 45001 Healthy & Safety Management System.



