

The background of the entire page is a dark, starry night sky. In the lower portion, the dark silhouettes of rolling mountains are visible against the lighter, star-filled sky. In the top left corner, there is a blue graphic element consisting of a 3x2 grid of squares, with the rightmost squares being larger and forming a rectangular shape.

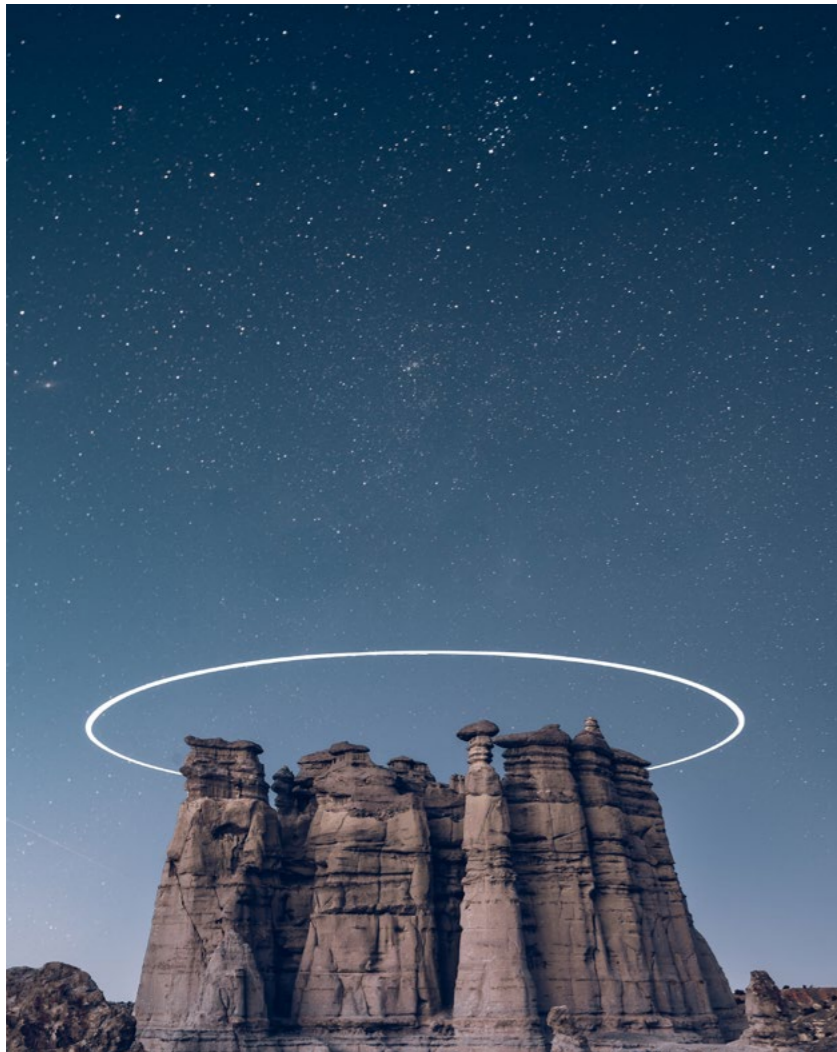
Night Falls

T815

TUNTEX™

Glimmering

When the night falls, the darkness devours the sky while light rises with glimmering. T815 Night Falls uses scattered changes in color and graphics to simulate this natural scene, inspiring a calm and positive indoor mood.

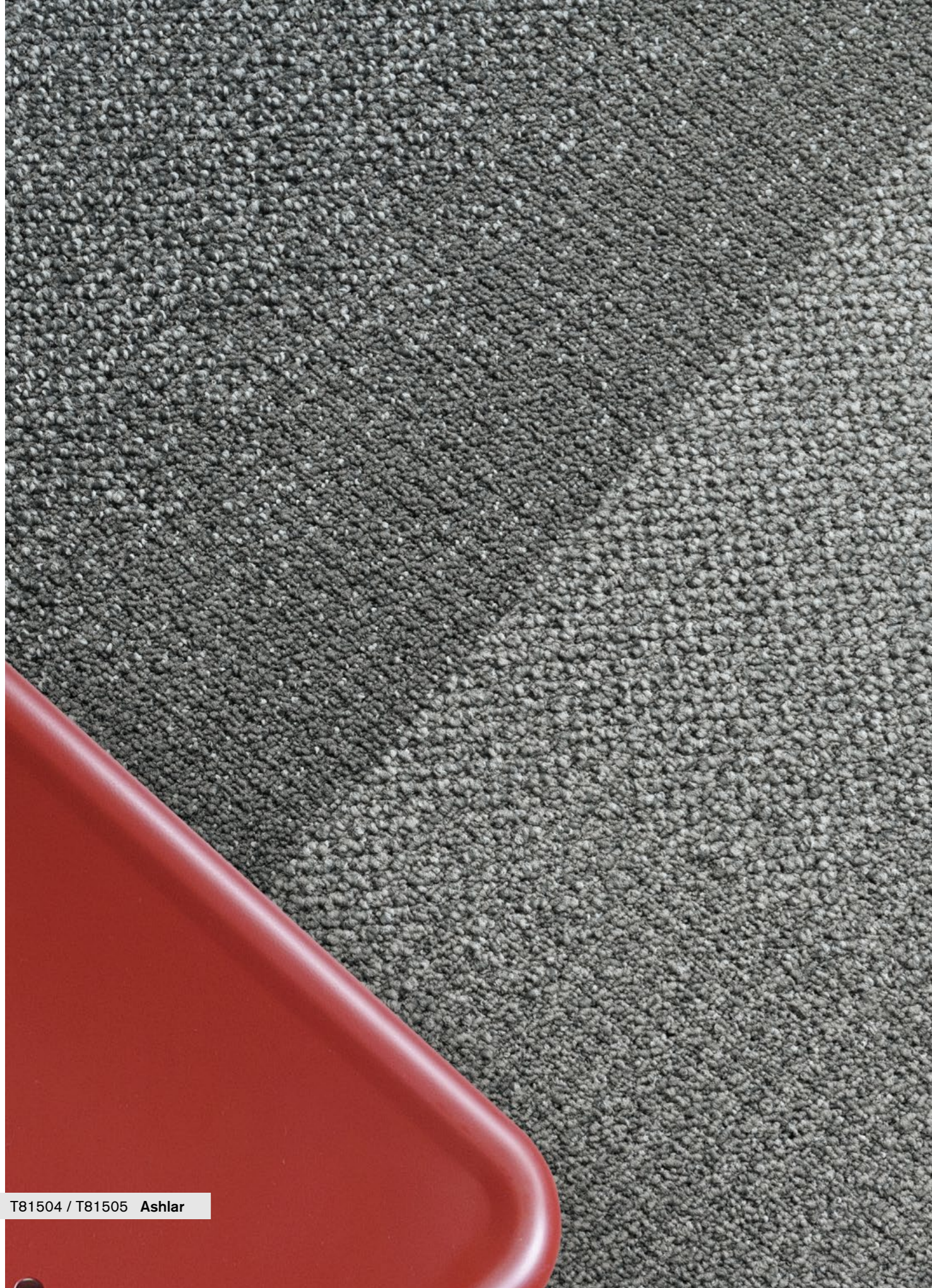




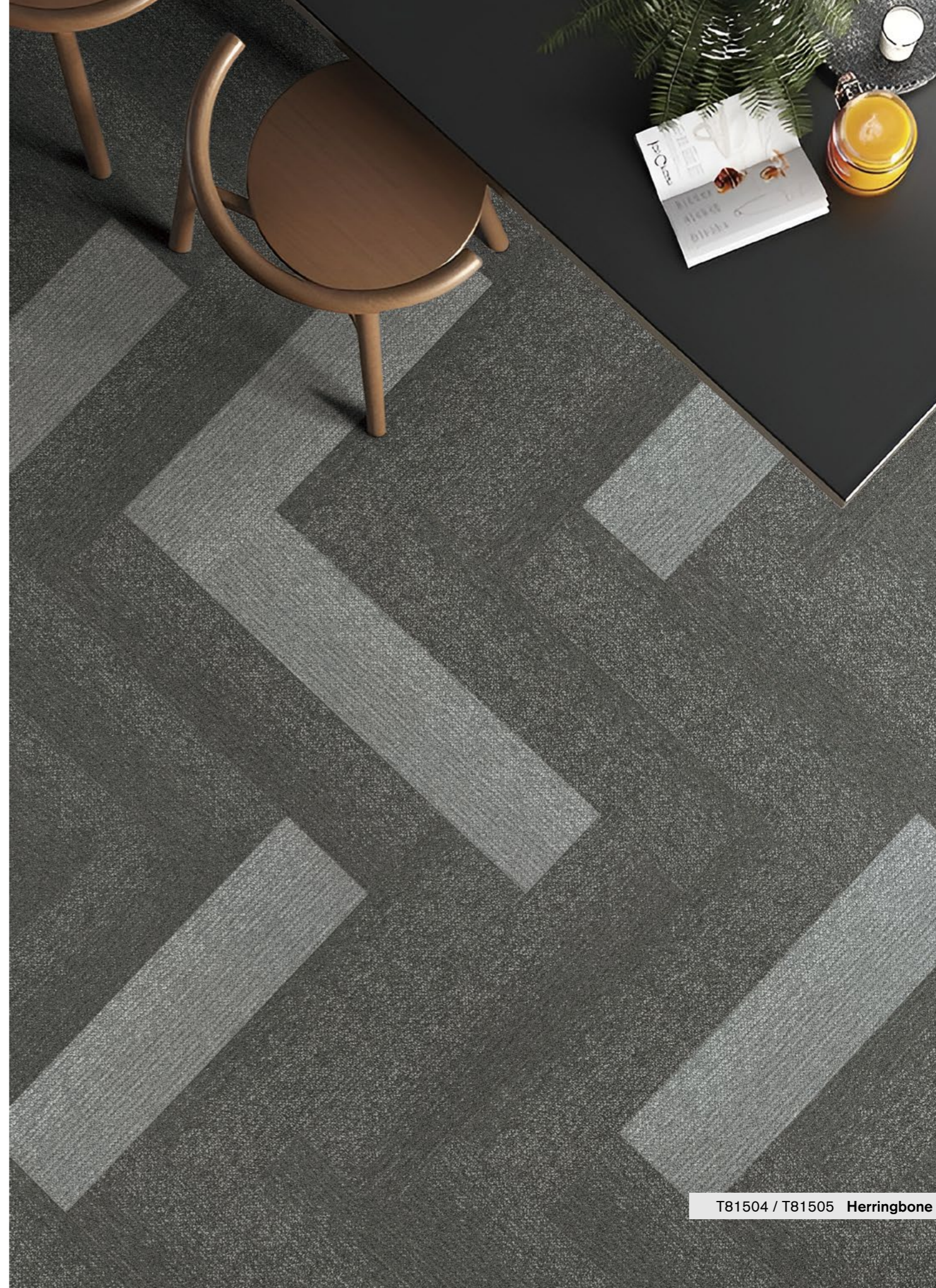
T81501 / T81502 Ashlar



T81502 Brick



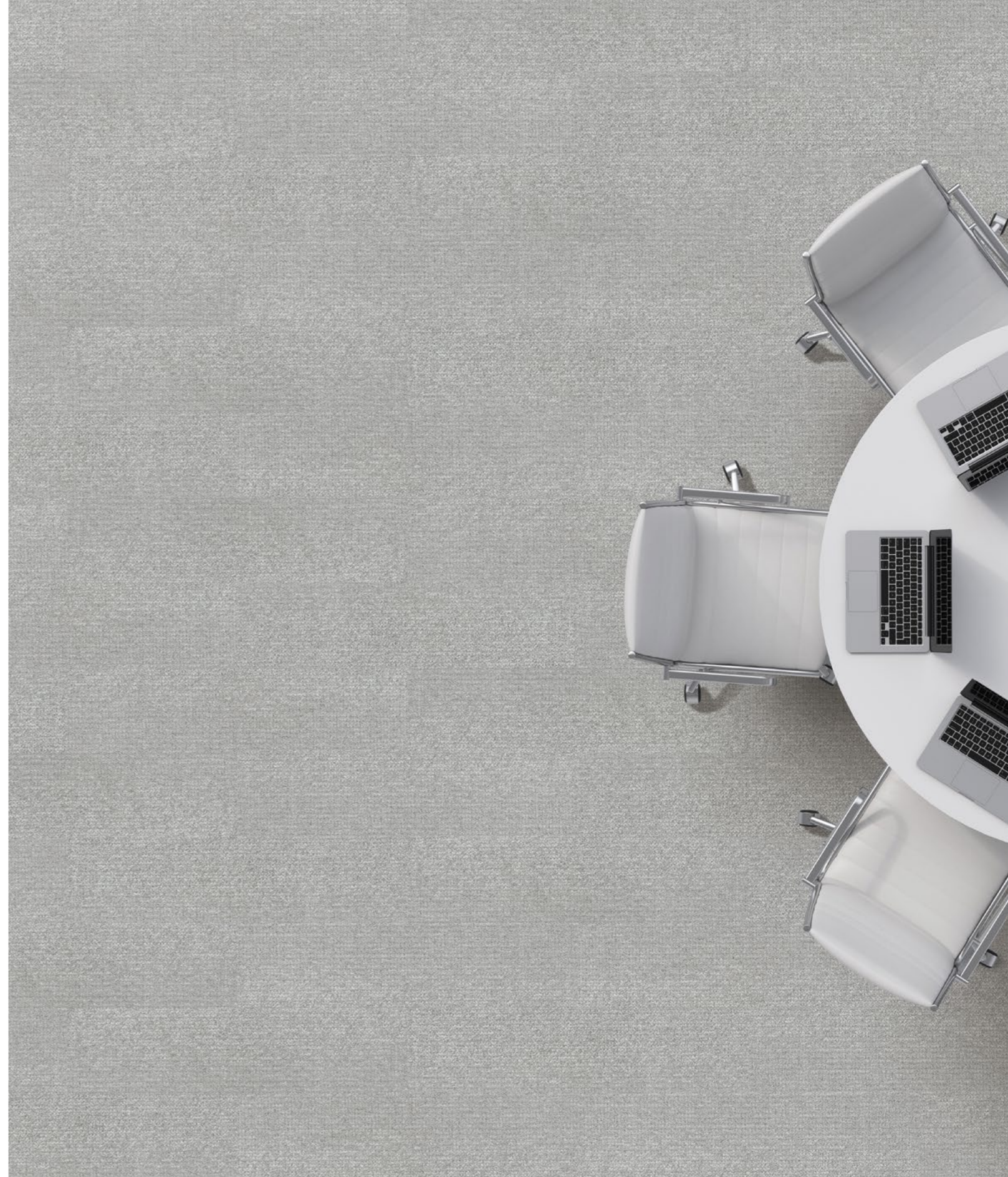
T81504 / T81505 Ashlar



T81504 / T81505 Herringbone



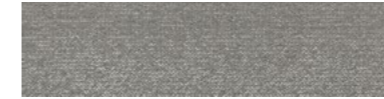
T81502 Half Basketweave



T81503 Ashlar



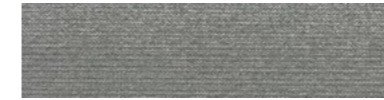
T81501 Cloud



T81502 Slate



T81503 Coin



T81504 Fossil



T81505 Shadow

| | |
|-------------------------|---|
| Style | T815 "Night Falls" |
| Construction | Hi / Mid / Lo Loop |
| Pile Fibre | nexlon™ Premium Solution Dyed Nylon featured with aircell |
| Dye Method | Solution Dyed |
| Gauge | 1 / 10G |
| Pile Height | 7.0 / 4.5 / 3.5mm |
| Total Thickness | 7.7mm(±0.5mm) |
| Tile size | 250mm x 1000mm |
| Total Weight | Approx. 4950g / m ² |
| Secondary Back | TUNTEX Duraback |
| Stain Resistance | Stainshield Treatment: STAIN SHIELD™ |
| Soil Resistance | Soil Guard Treatment: SOIL GUARD™ |

| | |
|------------------------------|--|
| Wear Warranty | Product is warranted not to lose more than 10% pile fibre by weight in normal commercial use within 15 years. |
| Colour Fastness | 15 Year Warranty AATCC 16. Grade 4 - Little or no change. |
| Static Electricity | Permanent Lifetime Protection - less than 2.0 KV. |
| Dimensional Stability | Warranted not to change in size by more than 0.5 mm in normal use. Will not dome or dish in normal use. |
| Installation | Tackifier or Releasable adhesive Recommended. |
| Sustainability | All yarns used are Solution dyed to minimise use of water and exclude any effluent production. ISO 14001 and ISO 9001. |

Health Product Declaration (HPD) Third Party verified by U.S. GreenCircle Certified.

U.S. CRI Green Label Plus Certificate.

Singapore Green Building Council Product Certificate - 4 Ticks "Leader".

Passes ASTM Flammability Test.
Flammability: Passes (ASTM E648)
Smoke Density: Passes (ASTM E662)

Passes AATCC Static Propensity Test.
Static Propensity: ≤ 2.0 KV (AATCC 134)

Passes the Quality Test of China National Carpet Quality Test Center.

Passes the Flammability Test and Environmental Protection Test of the China National Fire and Construction Quality Surveillance Center.

ISO 9001 Quality Management System.

ISO 14001 Environmental Management System.

ISO 45001 Healthy & Safety Management System.



