

A vintage pocket watch with Roman numerals is shown in the foreground on the left. The background is a bokeh of warm, glowing lights. A blue rectangular box is overlaid on the top left, containing the text 'Vintage' and 'T716'. At the bottom, there is a detailed line drawing of a large, multi-story building with a gabled roof and a path leading towards it.

Vintage

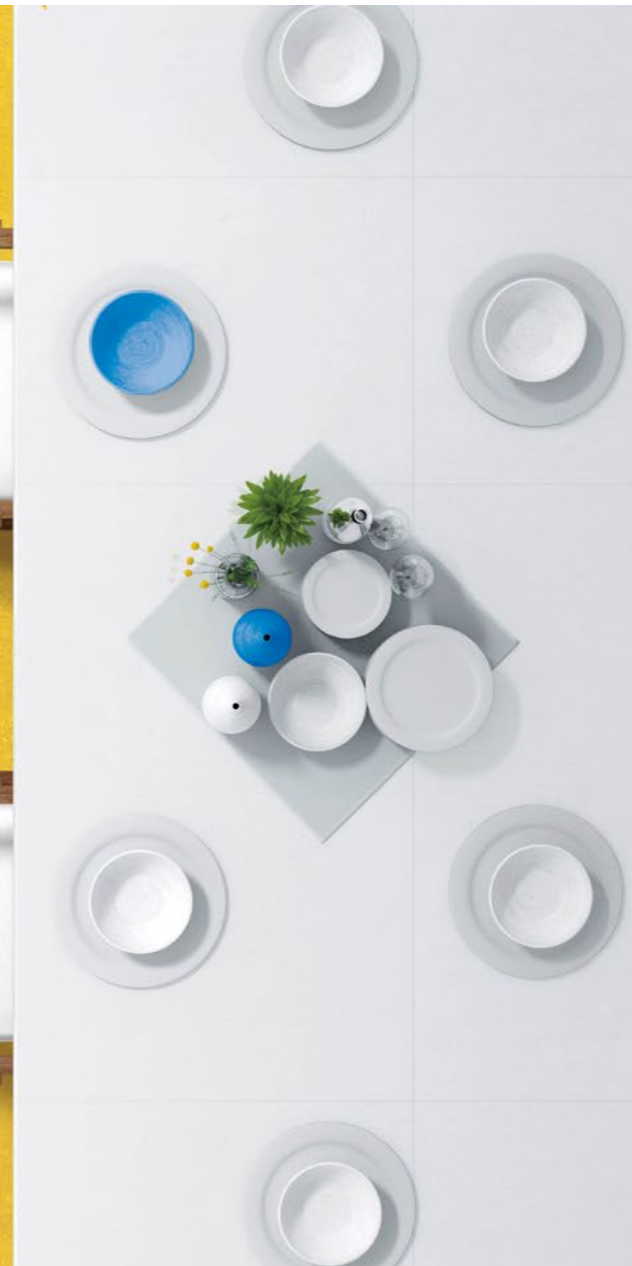
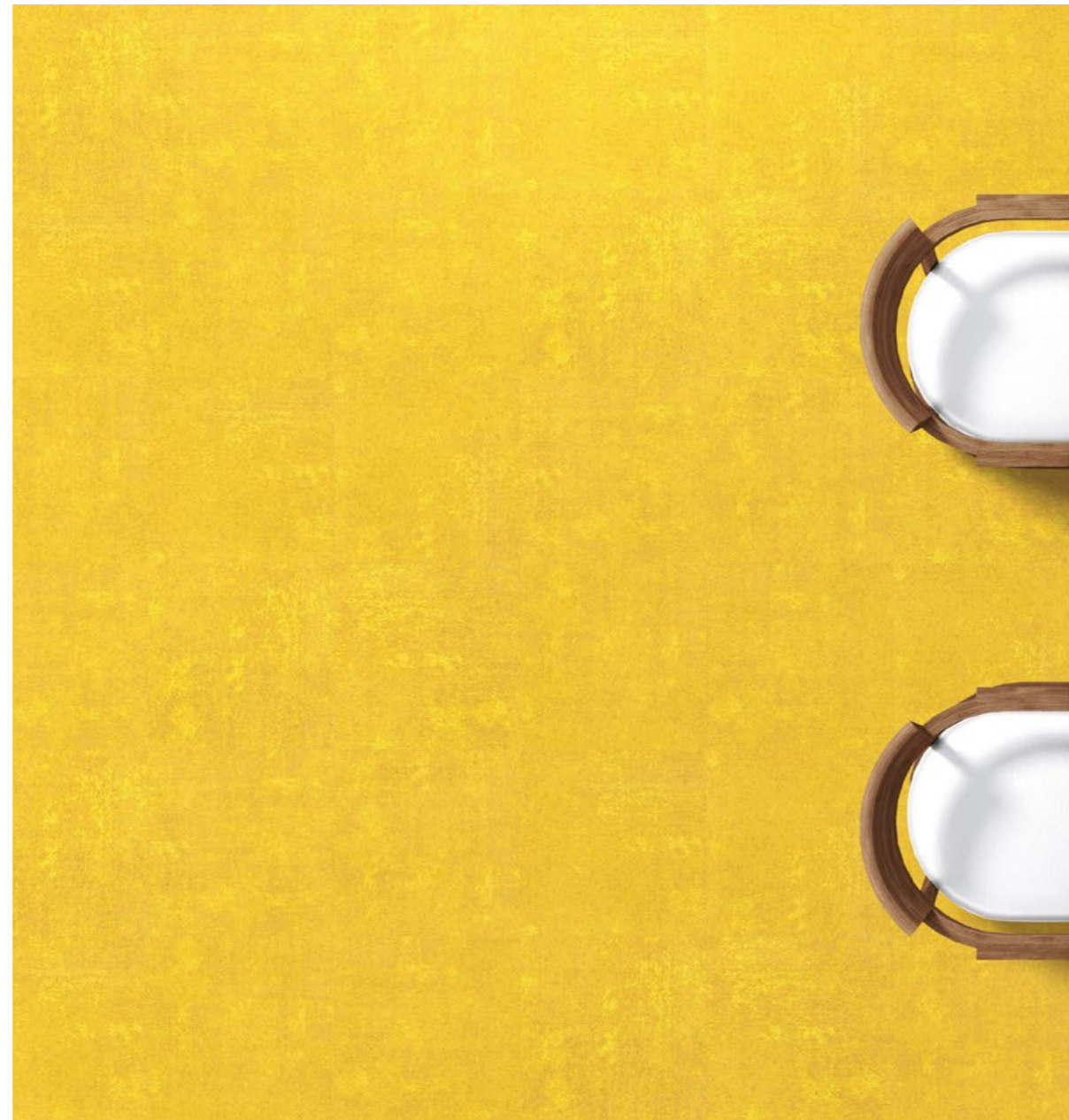
T716

TUNTEX™

# Vintage

T716 Vintage collection features organic patterns with a tie-dye effect that gives a sense of antiqueness and tells a story of history and memory.





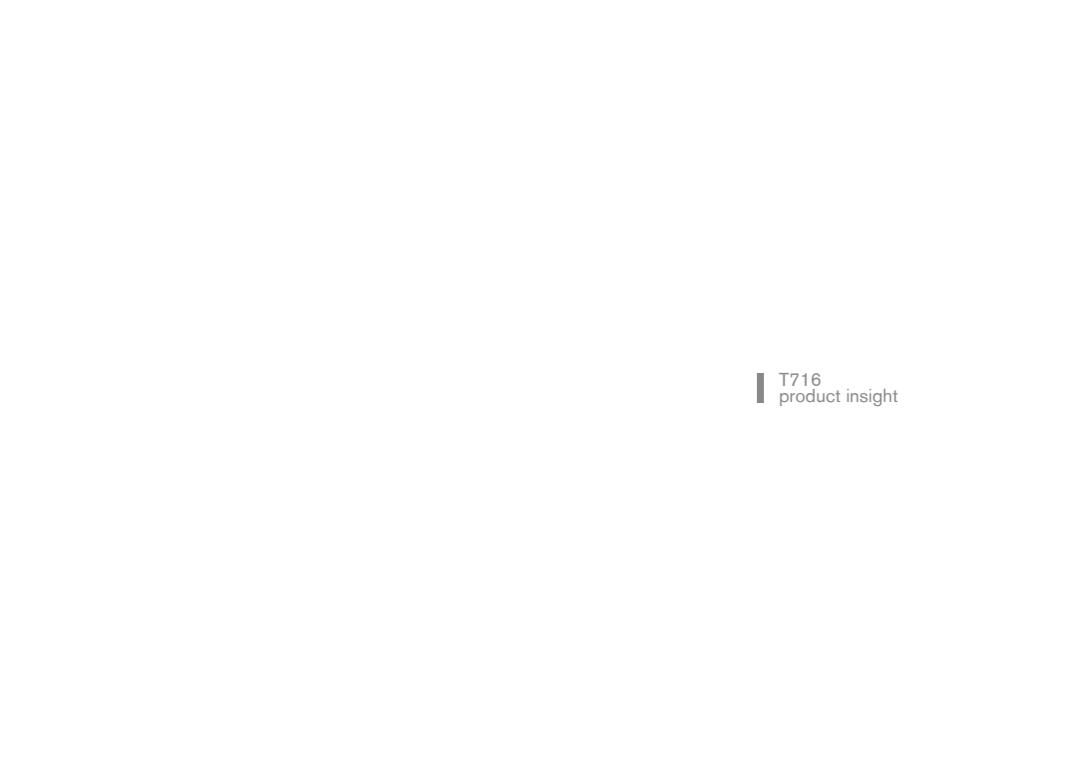
T71610 / T71614 Quarter-Turn

# Unique

The beauty of vintage comes from the uniqueness the era brings, similar to wine. Each vintage wine has a particular flavor fundamentally molded by the grapes harvested that year. "Vintage" describes something hard to replicate or mimic, unrepeatable over time.



T71601 / T71603 / T71608 / T71614 / T71615 Quarter-Turn



T716  
product insight



T71602 / T71603 / T71614 / T71615 Quarter-Turn

# Timeless

There are styles that only get better over time. Timeless elements that, like vintage wine, age gracefully and even become more charming and appreciated over the decades. Tuntex's T716 Vintage collection is designed with organic patterns with a tie-dye effect, creating a sense of antiqueness that tells a story of history and memory, ensuring its long lasting presence.





T71605 / T71606 / T71611 / T71612 **Quarter-Turn**



T71610 / T71611 / T71612 / T71616 **Brick**



T71610 / T71611 / T71617 / T71619 Quarter-Turn

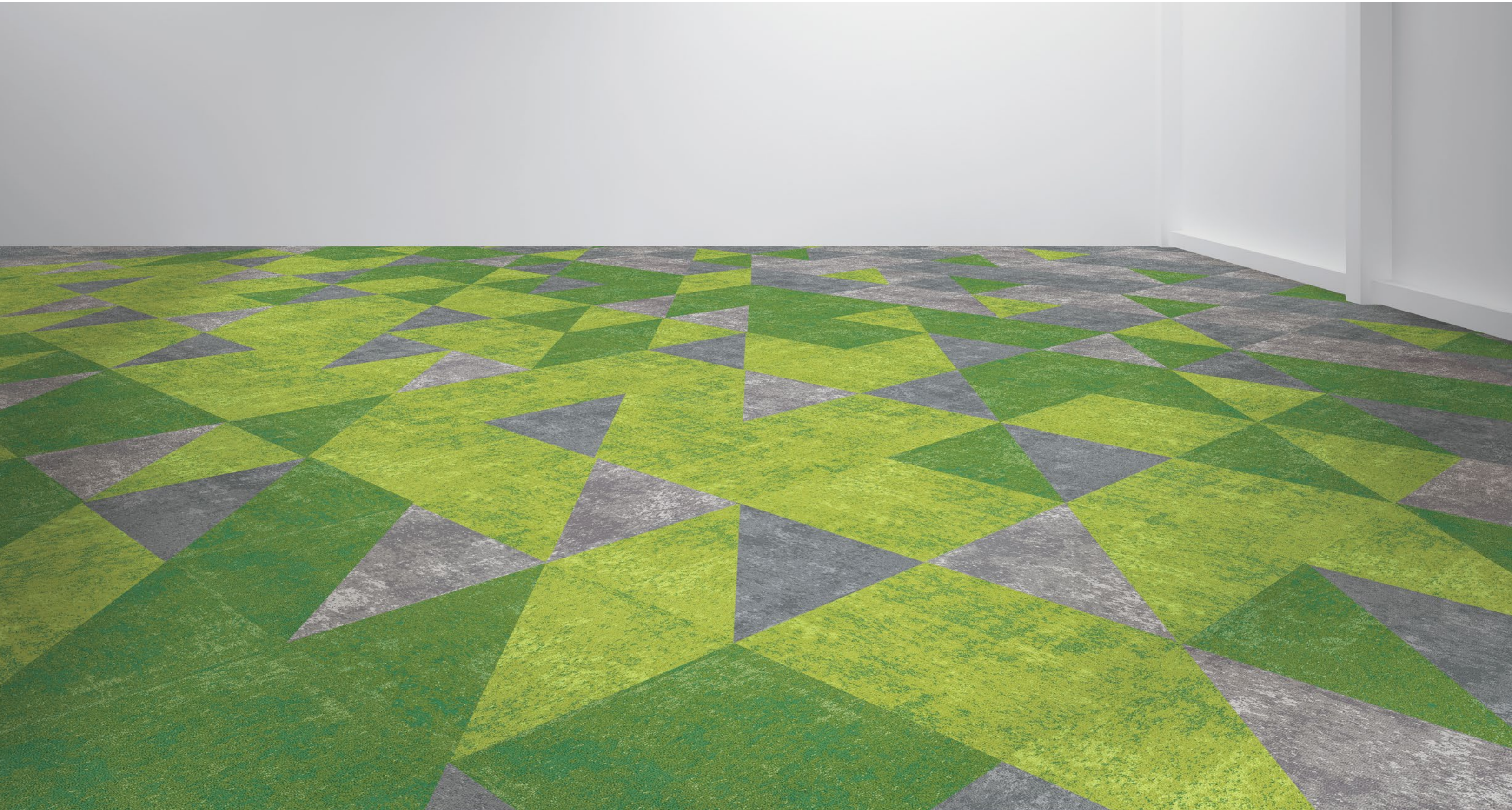




T71602 Quarter-Turn



T71601 / T71602 Quarter-Turn







T71607 / T71608 Brick



T71605 / T71606 Brick





T71601 / T71603 / T71604 / T71610 **Quarter-Turn**

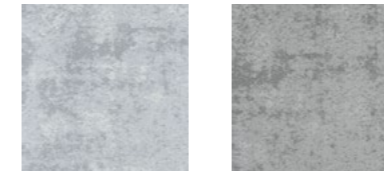


T71602 / T71603 / T71604 / T71607 **Quarter-Turn**



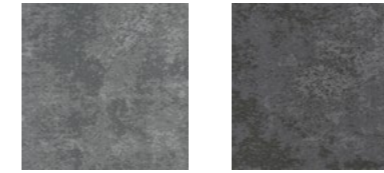


T71602 / T71603 / T71610 / T71611 / T71612 / T71614 Brick



T71601 Moscato

T71602 Riesling



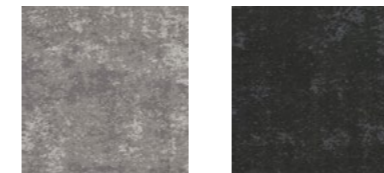
T71603 Hermitage

T71604 Reims



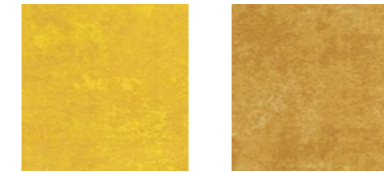
T71605 Chablis

T71606 Toscana



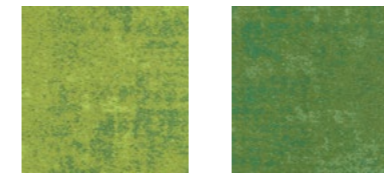
T71607 Lafitte

T71608 Penfolds



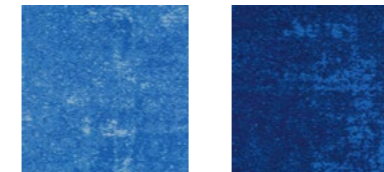
T71610 Champagne

T71611 Chardonnay



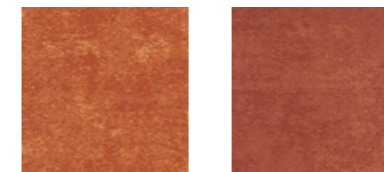
T71612 Napa

T71613 Barossa



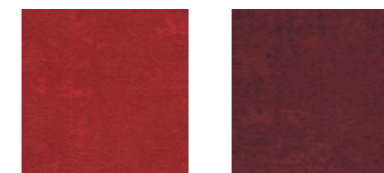
T71614 Marlborough

T71615 Tuscany



T71616 Cabernet

T71617 Shiraz



T71618 Burgundy

T71619 Bordeaux

<b>Style</b>	T716 "Vintage"
<b>Construction</b>	Multi Hi / Lo Loop
<b>Pile Fibre</b>	Universal Fiber Solution Dyed Nylon
<b>Dye Method</b>	Solution Dyed
<b>Gauge</b>	1/10 G
<b>Pile Height</b>	6.0 - 3.5 mm
<b>Total Thickness</b>	8.4 mm(±0.5mm)
<b>Tile size</b>	500mm x 500mm
<b>Total Weight</b>	Approx. 6300 g/m <sup>2</sup>
<b>Secondary Back</b>	TUNTEX Duraback
<b>Stain Resistance</b>	Stainshield Treatment: <b>STAIN</b> SHIELD™
<b>Soil Resistance</b>	Soil Guard Treatment: <b>SOIL</b> GUARD™
<b>Odor Reducer</b>	Ecofresh Treatment: <b>ECO</b> FRESH™
<b>Anti-microbial</b>	Microshield Treatment: <b>MICRO</b> SHIELD™
<hr/>	
<b>Wear Warranty</b>	Product is warranted not to lose more than 10% pile fibre by weight in normal commercial use within 15 years.
<b>Colour Fastness</b>	15 Year Warranty AATCC 16. Grade 4 - Little or no change.
<b>Static Electricity</b>	Permanent Lifetime Protection - less than 2.0 KV.
<b>Dimensional Stability</b>	Warranted not to change in size by more than 0.5 mm in normal use. Will not dome or dish in normal use.
<b>Installation</b>	Tackifier or Releasable adhesive Recommended.
<b>Sustainability</b>	All yarns used are Solution dyed to minimise use of water and exclude any effluent production. ISO 14001 and ISO 9001.

Health Product Declaration (HPD).

U.S. CRI Green Label Plus Certificate.

Singapore Green Building Council Product Certificate - 4 Ticks "Leader".

Passes ASTM Flammability Test.  
Flammability: Passes (ASTM E648)  
Smoke Density: Passes (ASTM E662)

Passes AATCC Static Propensity Test.  
Static Propensity: ≤ 2.0 KV (AATCC 134)

Passes the Quality Test of China National Carpet Quality Test Center.

Passes the Flammability Test and Environmental Protection Test of the China National Fire and Construction Quality Surveillance Center.

ISO 9001 Quality Management System.

ISO 14001 Environmental Management System.

ISO 45001 Healthy & Safety Management System.



