



1933 Shanghai
T723

19 叁 III

1933 SHANGHAI

老場坊

TUNTEX™

1933 Shanghai

T723 1933 Shanghai presents how it interprets the balance between history and modernism, painting your indoor spaces with retrospective patterns without losing the simplicity of modern styles.





T72303 / T10806 Quarter-Turn

Avant-grade

“1933” is more than just a renovated historical building – it shows how an old industrial building is reborn to fit perfectly into the present times. Its original simplistic design makes it ahead of its time, already manifesting a contemporary style back in the early 20th century.

All images are computer generated files and may not exactly represent actual installation appearance and tile seams. Full tiles can be provided if required.



T72301 / T72303 / T72304 / T72305 Quarter-Turn

Retro

The most interesting stories come from places with history that are forgotten. Inspired by "1933," Tuntex presents how it interprets the balance between history and modernism, painting your indoor spaces with retrospective patterns without losing the simplicity of modern styles.





T72303 / T72305 Quarter-Turn



T72305 Brick

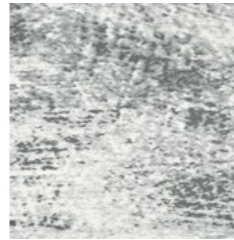




T72305 / T72306 Brick



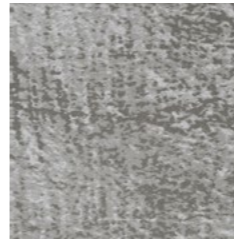
T72302 / T72303 Quarter-Turn



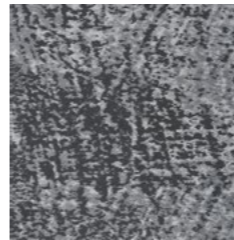
T72301 Reserve



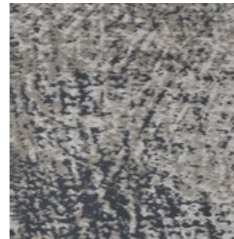
T72302 Rebirth



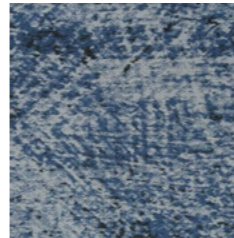
T72303 Remain



T72304 Revive



T72305 Resurge



T72306 Refresh

Style	T723 "1933 ShangHai"
Construction	Multi Hi / Lo Loop
Pile Fibre	Universal Fiber Solution Dyed Nylon
Dye Method	Solution Dyed
Gauge	1/10 G
Pile Height	5.0 - 3.0 mm
Total Thickness	8.5 mm(±0.5mm)
Tile size	500mm x 500mm
Total Weight	Approx. 6200 g/m ²
Secondary Back	TUNTEX Duraback
Stain Resistance	Stainshield Treatment: STAIN SHIELD™
Soil Resistance	Soil Guard Treatment: SOIL GUARD™
Odor Reducer	Ecofresh Treatment: ECO FRESH™
Anti-microbial	Microshield Treatment: MICRO SHIELD™
<hr/>	
Wear Warranty	Product is warranted not to lose more than 10% pile fibre by weight in normal commercial use within 15 years.
Colour Fastness	15 Year Warranty AATCC 16. Grade 4 - Little or no change.
Static Electricity	Permanent Lifetime Protection - less than 2.0 KV.
Dimensional Stability	Warranted not to change in size by more than 0.5 mm in normal use. Will not dome or dish in normal use.
Installation	Tackifier or Releasable adhesive Recommended.
Sustainability	All yarns used are Solution dyed to minimise use of water and exclude any effluent production. ISO 14001 and ISO 9001.

Health Product Declaration (HPD).

U.S. CRI Green Label Plus Certificate.

Singapore Green Building Council Product Certificate - 4 Ticks "Leader".

Passes ASTM Flammability Test.
Flammability: Passes (ASTM E648)
Smoke Density: Passes (ASTM E662)

Passes AATCC Static Propensity Test.
Static Propensity: ≤ 2.0 KV (AATCC 134)

Passes the Quality Test of China National Carpet Quality Test Center.

Passes the Flammability Test and Environmental Protection Test of the China National Fire and Construction Quality Surveillance Center.

ISO 9001 Quality Management System.

ISO 14001 Environmental Management System.

ISO 45001 Healthy & Safety Management System.



