



Crystalline

T721



TUNTEX™

Elegant

The most unique form of crystals is a diamond. Diamonds are one of the hardest substances, often described as "unbreakable," just like T721 crystalline since its carpet colours can last for a long period of time.







T72107 Quarter-Turn





T72102 / T72106 Ashlar





T72103 Quarter-Turn



T72103 / T72106 Brick



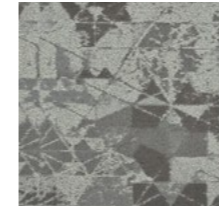
T72101 Quarter-Turn



T72109 Brick



T72101 Ivory



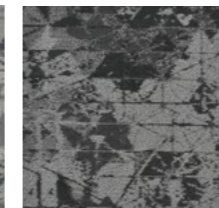
T72102 Grit



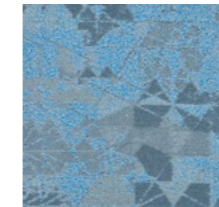
T72103 Element



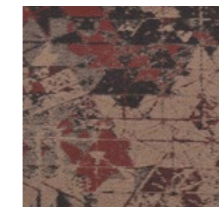
T72104 Lunar



T72106 Ebony



T72107 Sapphire



T72108 Ruby



T72109 Argent

Style	T721 "Crystalline"
Construction	Multi Hi / Lo Loop
Pile Fibre	nexlon™ Premium Solution Dyed Nylon featured with quartz
Dye Method	Solution Dyed
Gauge	1/10 G
Pile Height	5.0 - 3.0 mm
Total Thickness	8.5 mm(±0.5mm)
Tile size	500mm x 500mm
Total Weight	Approx. 6250 g/m ²
Secondary Back	TUNTEX Duraback
Stain Resistance	Stainshield Treatment: STAINSHIELD™
Soil Resistance	Soil Guard Treatment: SOILGUARD™
Odor Reducer	Ecofresh Treatment: ECOFRESH™
Anti-microbial	Microshield Treatment: MICROSHIELD™

Wear Warranty	Product is warranted not to lose more than 10% pile fibre by weight in normal commercial use within 15 years.
Colour Fastness	15 Year Warranty AATCC 16. Grade 4 - Little or no change.
Static Electricity	Permanent Lifetime Protection - less than 2.0 KV.
Dimensional Stability	Warranted not to change in size by more than 0.5 mm in normal use. Will not dome or dish in normal use.
Installation	Tackifier or Releasable adhesive Recommended.
Sustainability	All yarns used are Solution dyed to minimise use of water and exclude any effluent production. ISO 14001 and ISO 9001.

Health Product Declaration (HPD).

U.S. CRI Green Label Plus Certificate.

Singapore Green Building Council Product Certificate - 4 Ticks "Leader".

Passes ASTM Flammability Test.
Flammability: Passes (ASTM E648)
Smoke Density: Passes (ASTM E662)

Passes AATCC Static Propensity Test.
Static Propensity: ≤ 2.0 KV (AATCC 134)

Passes the Quality Test of China National Carpet Quality Test Center.

Passes the Flammability Test and Environmental Protection Test of the China National Fire and Construction Quality Surveillance Center.

ISO 9001 Quality Management System.

ISO 14001 Environmental Management System.

ISO 45001 Healthy & Safety Management System.



