

Color Dew

T708

TUNTEX™

Color Dew

T708 Color Dew refers to the subtle and delicate play of colors that can be observed in natural landscapes, such as forests and mountains. It is a source of inspiration for artists, designers, and anyone who appreciates the simple wonders of life.





T7084 Quarter-Turn



T7081 Ashlar





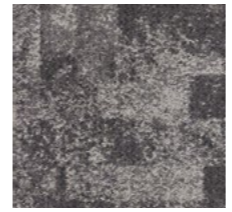
T7083 Brick



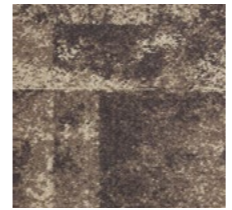
T7086 Brick



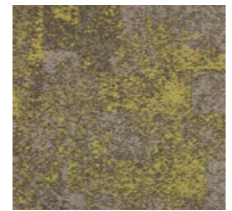
T7081 Chocolate



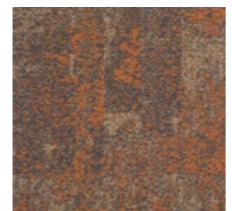
T7082 Crystal



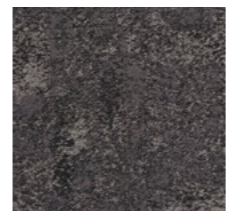
T7083 Espresso



T7084 Green Apple



T7085 Blaze Orange



T7086 Smokey

Style	T708 "Color Dew"
Construction	Multi Hi / Lo Loop
Pile Fibre	nexlon™ Premium Solution Dyed Nylon featured with quartz
Dye Method	Solution Dyed
Gauge	1/10 G
Pile Height	5.0 - 3.0 mm
Total Thickness	9.0 mm(±0.5mm)
Tile size	500mm x 500mm
Total Weight	Approx. 6350 g/m ²
Secondary Back	TUNTEX Duraback
Stain Resistance	Stainshield Treatment: STAINSHIELD™
Soil Resistance	Soil Guard Treatment: SOILGUARD™
Odor Reducer	Ecofresh Treatment: ECOFRESH™
Anti-microbial	Microshield Treatment: MICROSHIELD™

Wear Warranty	Product is warranted not to lose more than 10% pile fibre by weight in normal commercial use within 15 years.
Colour Fastness	15 Year Warranty AATCC 16. Grade 4 - Little or no change.
Static Electricity	Permanent Lifetime Protection - less than 2.0 KV.
Dimensional Stability	Warranted not to change in size by more than 0.5 mm in normal use. Will not dome or dish in normal use.
Installation	Tackifier or Releasable adhesive Recommended.
Sustainability	All yarns used are Solution dyed to minimise use of water and exclude any effluent production. ISO 14001 and ISO 9001.

Health Product Declaration (HPD).

U.S. CRI Green Label Plus Certificate.

Singapore Green Building Council Product Certificate - 4 Ticks "Leader".

Passes ASTM Flammability Test.
Flammability: Passes (ASTM E648)
Smoke Density: Passes (ASTM E662)

Passes AATCC Static Propensity Test.
Static Propensity: ≤ 2.0 KV (AATCC 134)

Passes the Quality Test of China National Carpet Quality Test Center.

Passes the Flammability Test and Environmental Protection Test of the China National Fire and Construction Quality Surveillance Center.

ISO 9001 Quality Management System.

ISO 14001 Environmental Management System.

ISO 45001 Healthy & Safety Management System.



