



DESIGN INSIGHT -

# **PRIORITY PROGRAM**

AT YOUR COMMAND

**TUNTEX™**



# TUNTEX PRIORITY PROGRAM

*Introducing the Tuntex Priority Program,  
in which we've selected from our most outstanding products and  
made into various modular designs.  
This program can simplify your design process and help you  
complete tasks quickly and efficiently in a high-quality and trendy way.*

## **Fast Delivery**

*A total of 20 colors from 8 selected series  
offer fast delivery service to fulfill your creative  
potential.*

## **Modular Design**

*Each serie features different modular designs  
that allow for greater design flexibility and  
scalability, making it easier to modify and adapt  
as needed.*





# QUICKLY EFFICIENTLY

## CONTENTS

**01** *What We Offer* **P-08**

**02** *How We Design* **P-10**  
Coordination  
Turnkey Solution

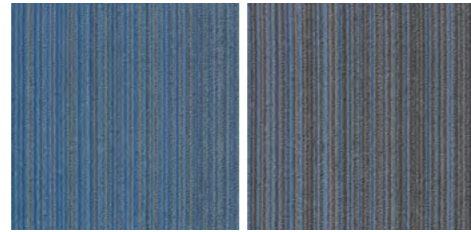
**03** *More to Show* **P-46**  
Design Reference

**04** *Specifications* **P-68**



### Track Connection T690

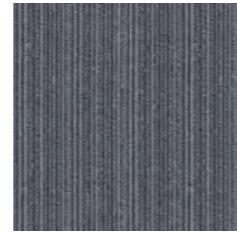
■ Colourways



T69009 SAPPHIRE

### Classic Track T660

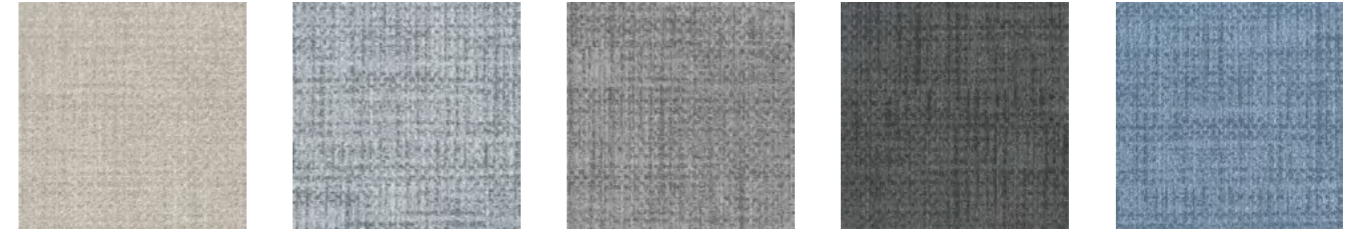
■ Colourways



T66006 CHARCOAL

### Linen T102

■ Colourways



T10201 SUGAR COOKIE

T10206 CLOUD

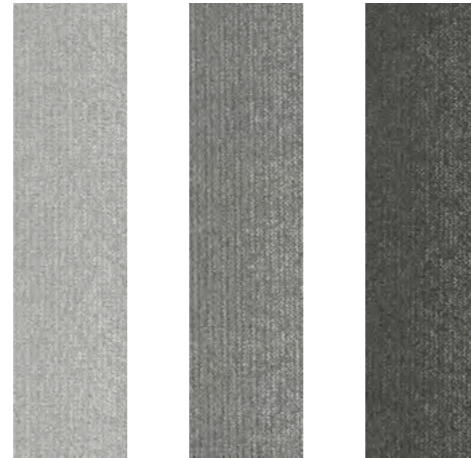
T10208 FOSSIL

T10209 SHADOW

T10212 SLATE

### Night Falls T815

■ Colourways



T81503 COIN

T81504 FOSSIL

T81505 SHADOW

### Glacier T675

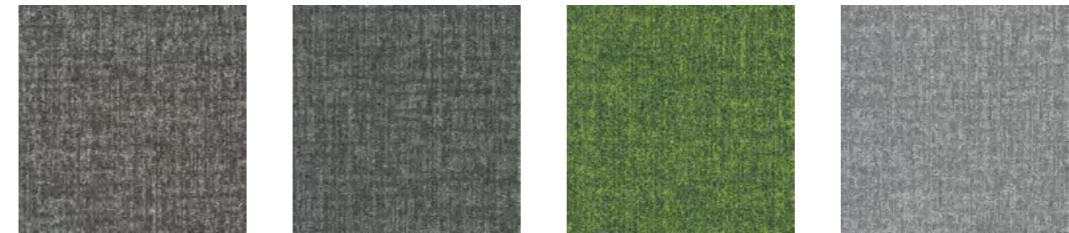
■ Colourways



T67505 GREY

### ReGenerate T108

■ Colourways



T10803 ASH

T10805 SMOKEY

T10821 EMERALD

T10825 SILVER

### Granite T665

■ Colourways



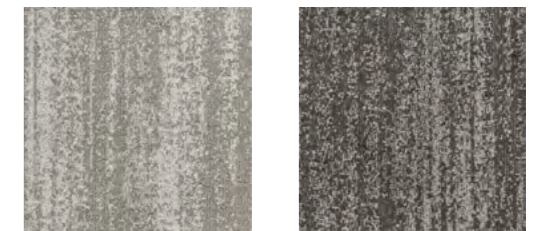
T66504 COIN

T66505 FOSSIL

T66507 CHARCOAL

### Torrent T601

■ Colourways

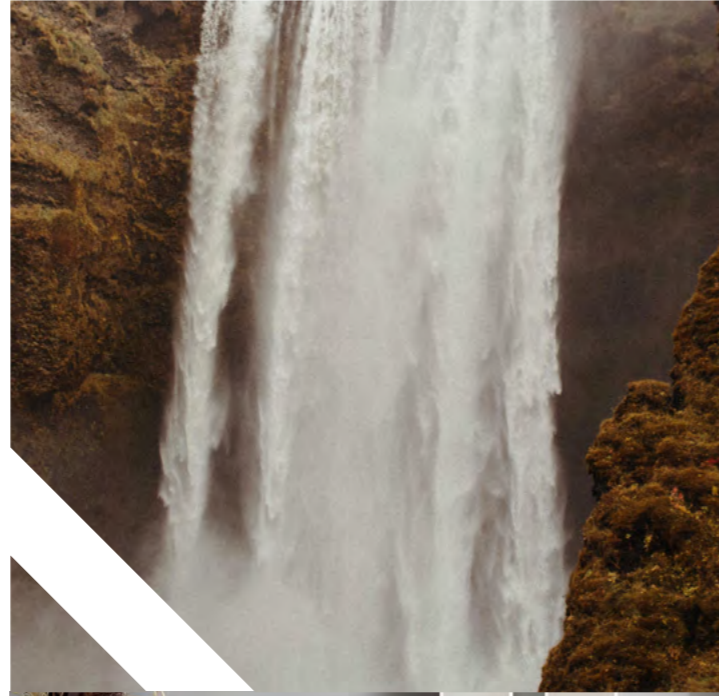


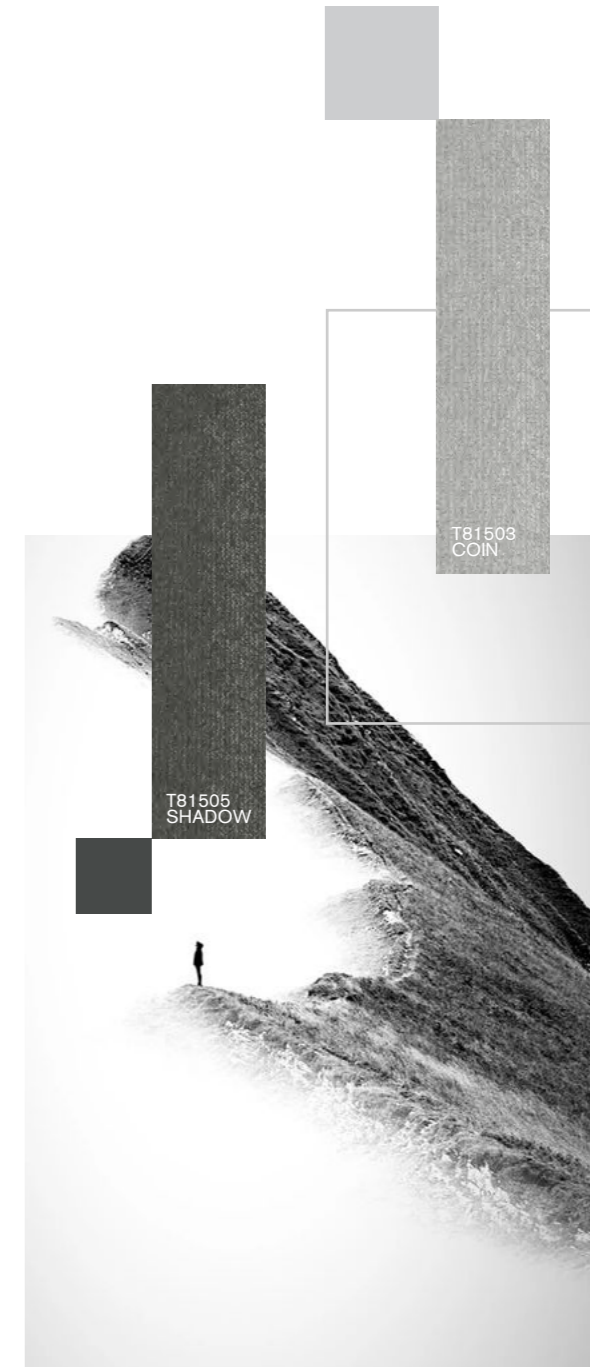
T60105 GREY

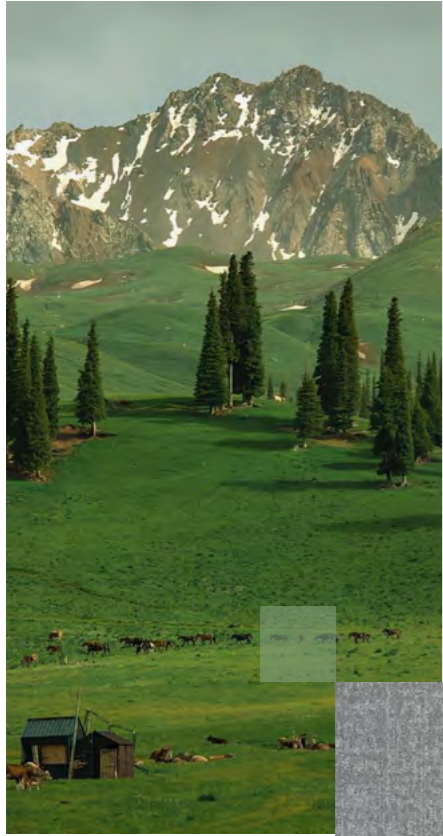
T60106 UMBER

# HOW WE DESIGN

*The design inspiration is derived from the overall style of the space and the unique qualities of various materials, colors, and patterns. We meticulously choose and install suitable carpets for each specific area to achieve a cohesive visual impact and elevate the overall experience.*







T10825 SILVER



T10821 EMERALD



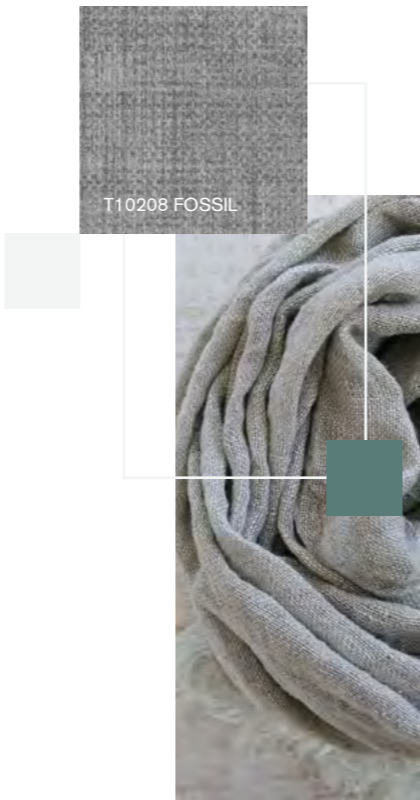
# NATURAL & AMBIANCE

Introducing a pop of a grass green can infuse the space with a fresh and natural ambiance.



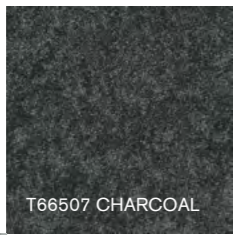


T10208 FOSSIL

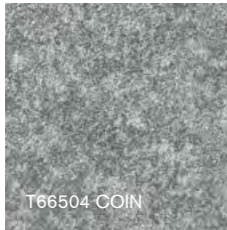


T67505 GREY





T66507 CHARCOAL



T66504 COIN

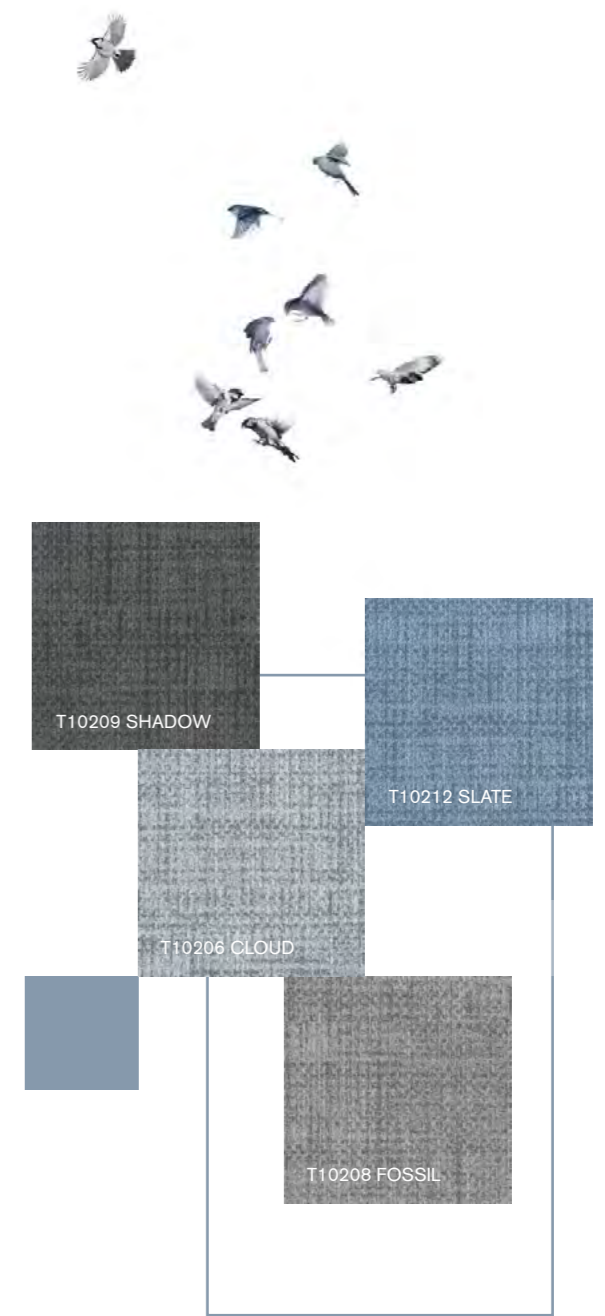


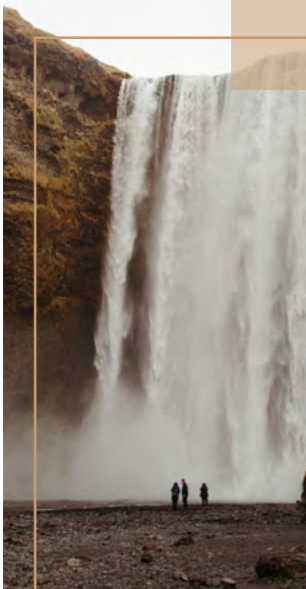
T81504 FOSSIL



T81505 SHADOW







T10201  
SUGAR COOKIE



# ELEGANCE & SOPHISTICATION

Incorporating a deep and rich blue hue can add an element of elegance and sophistication to the overall design.











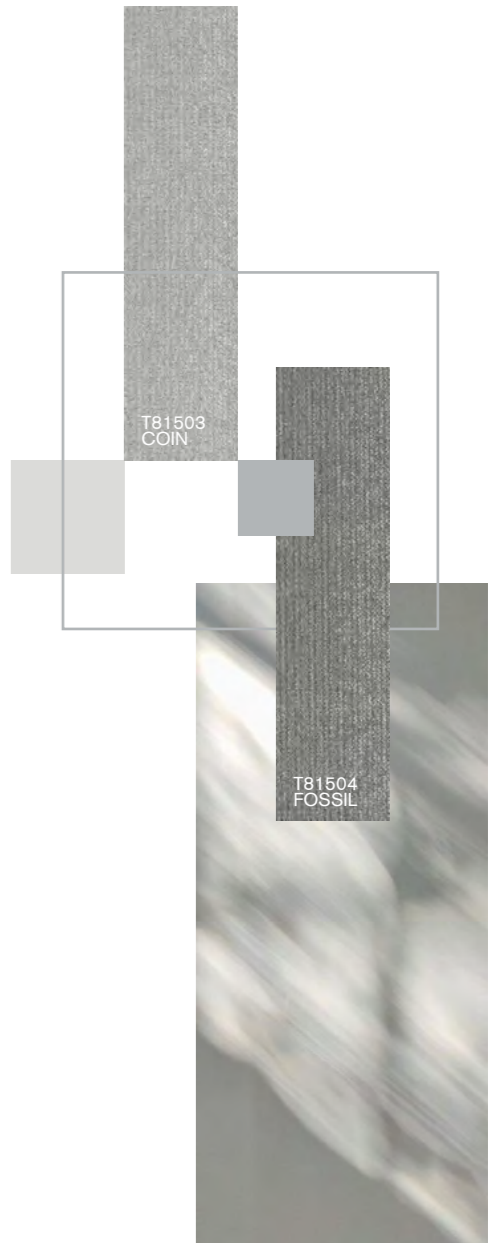
T10201  
SUGAR COOKIE

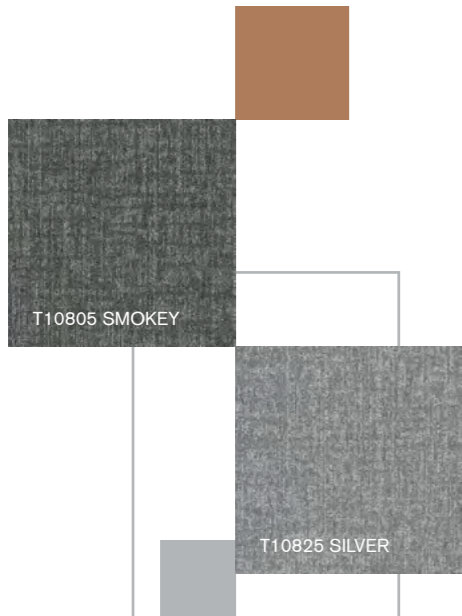
T10208  
FOSSIL

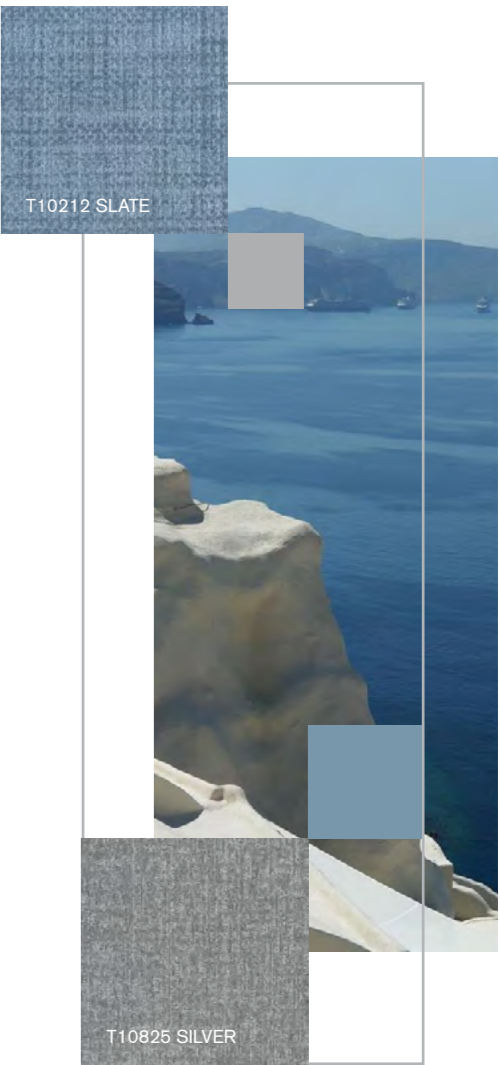


# CALMING & NEUTRAL

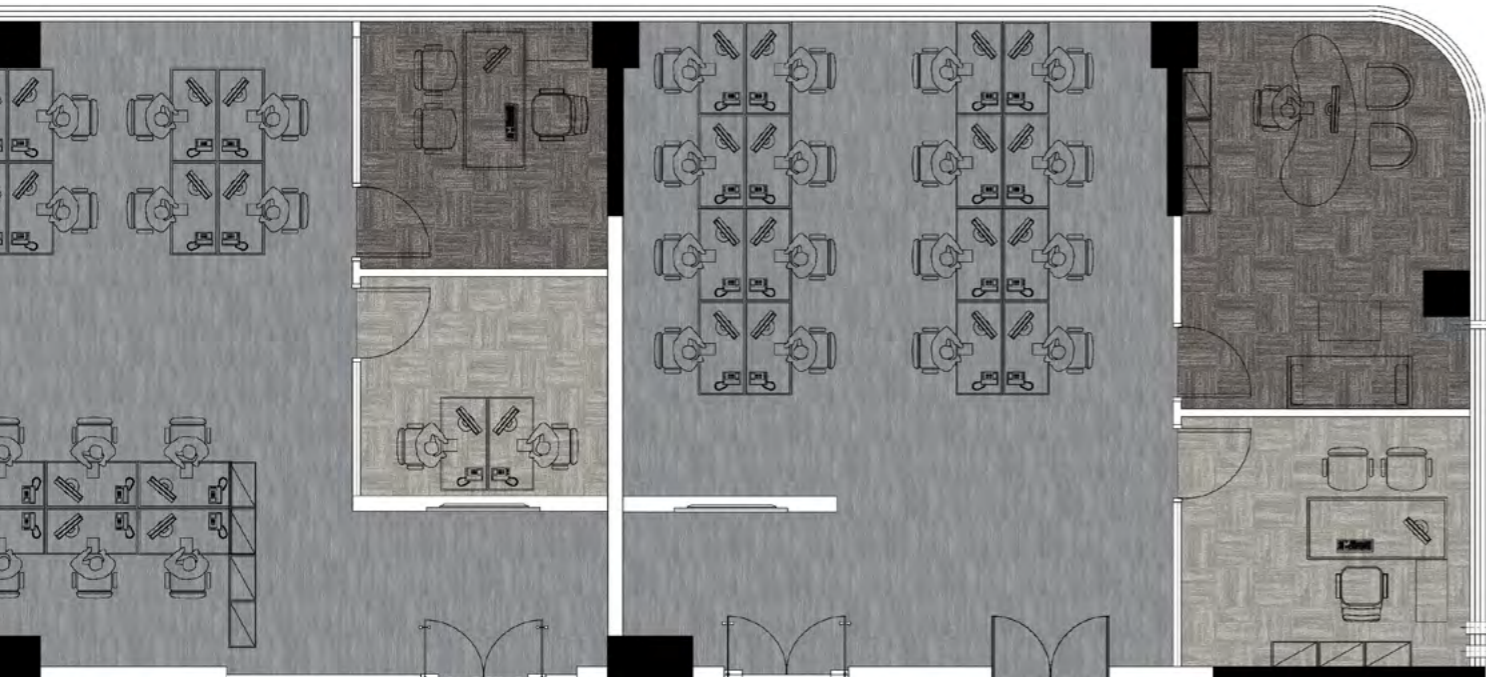
The elegant combination of light beige and soft grey is utilized to establish a calming and neutral environment.

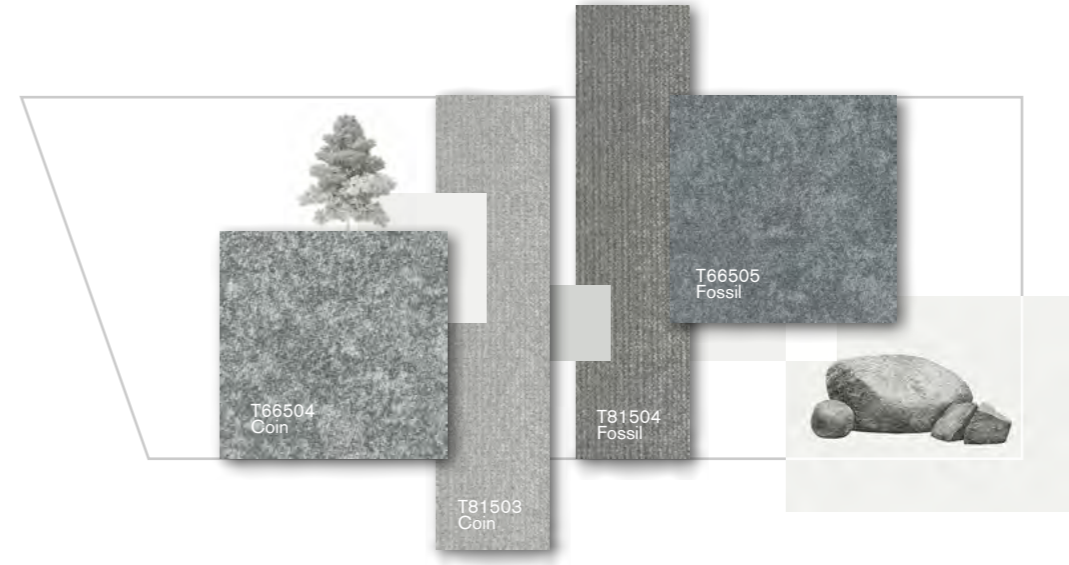




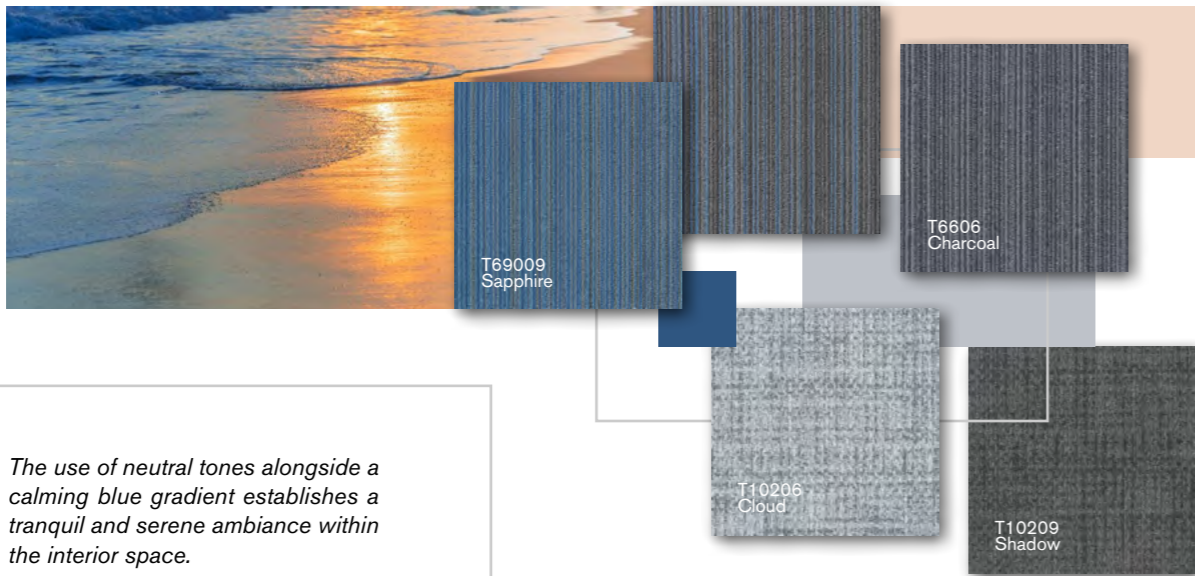


*The harmonious interplay of nuanced grey shades brings a captivating depth to expansive spaces.*

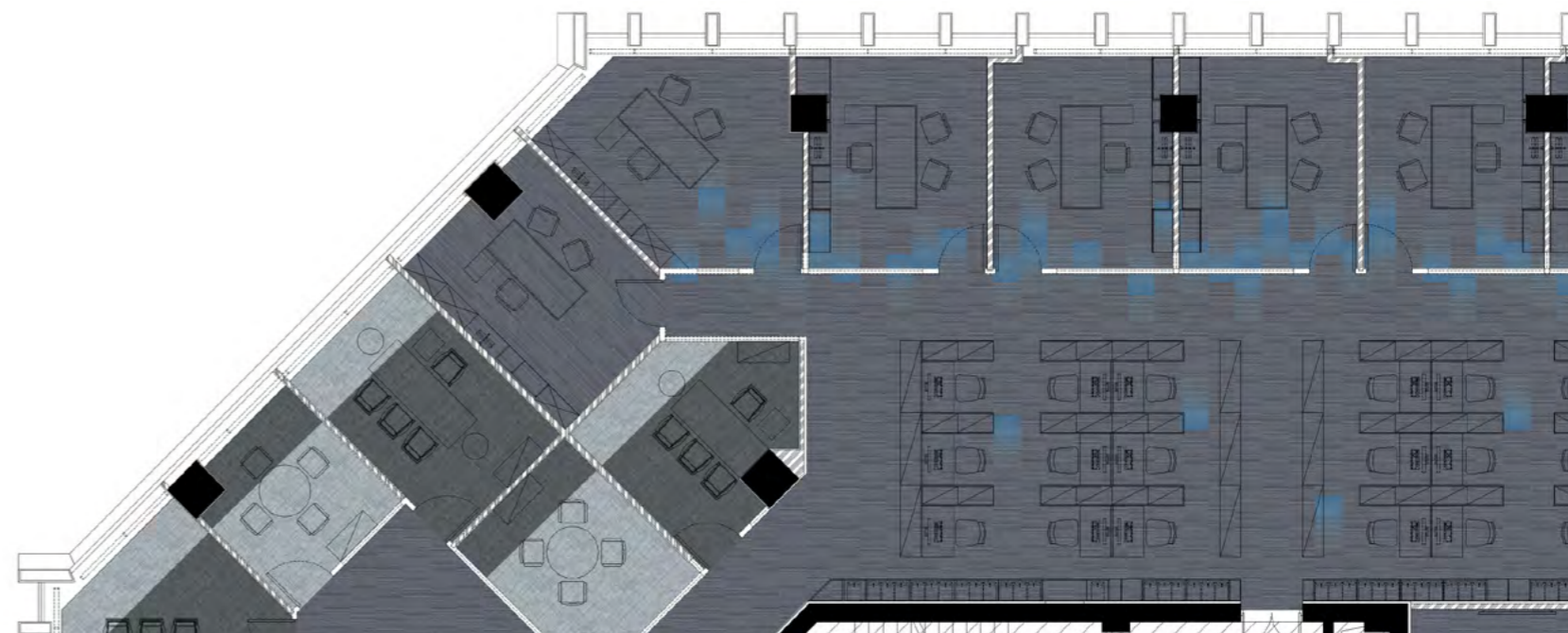




*A newfound fervor for innovation blossoms through the artful combination of structured and organic forms.*



*The use of neutral tones alongside a calming blue gradient establishes a tranquil and serene ambiance within the interior space.*



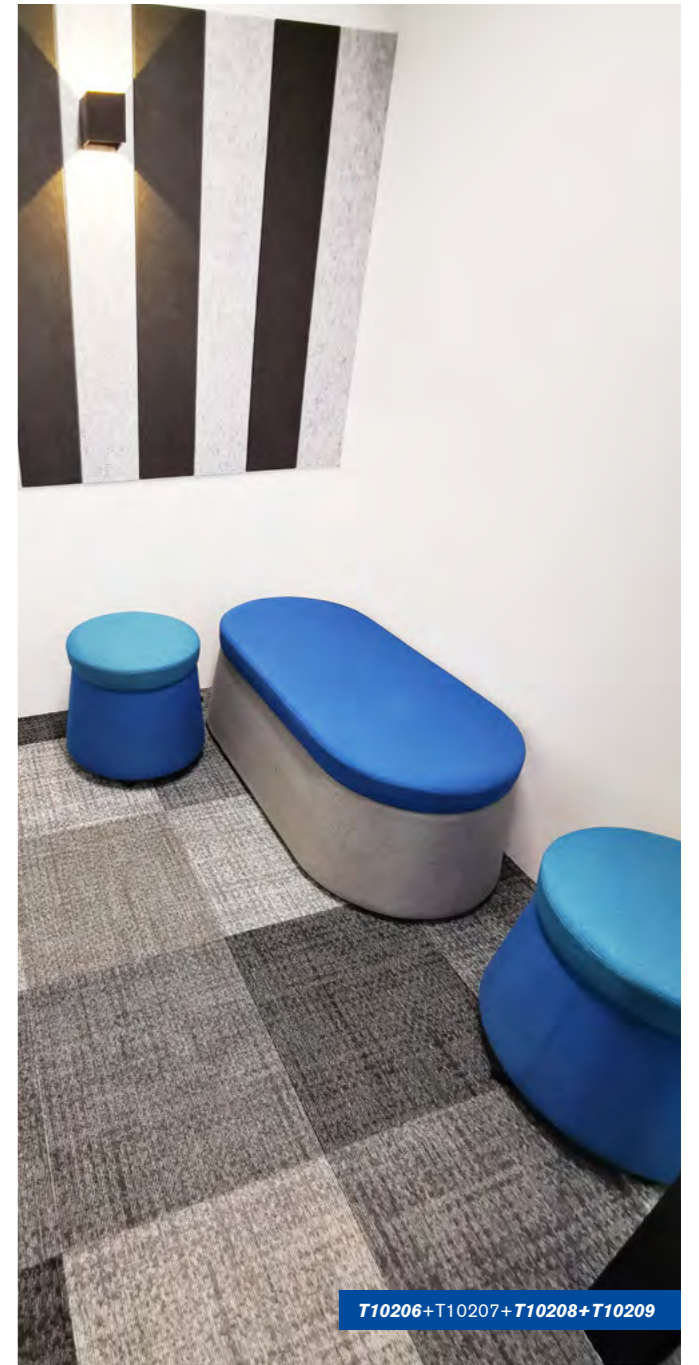
# MORE TO SHOW



T10207+T10208+T10209



T10206+T10208+T10209

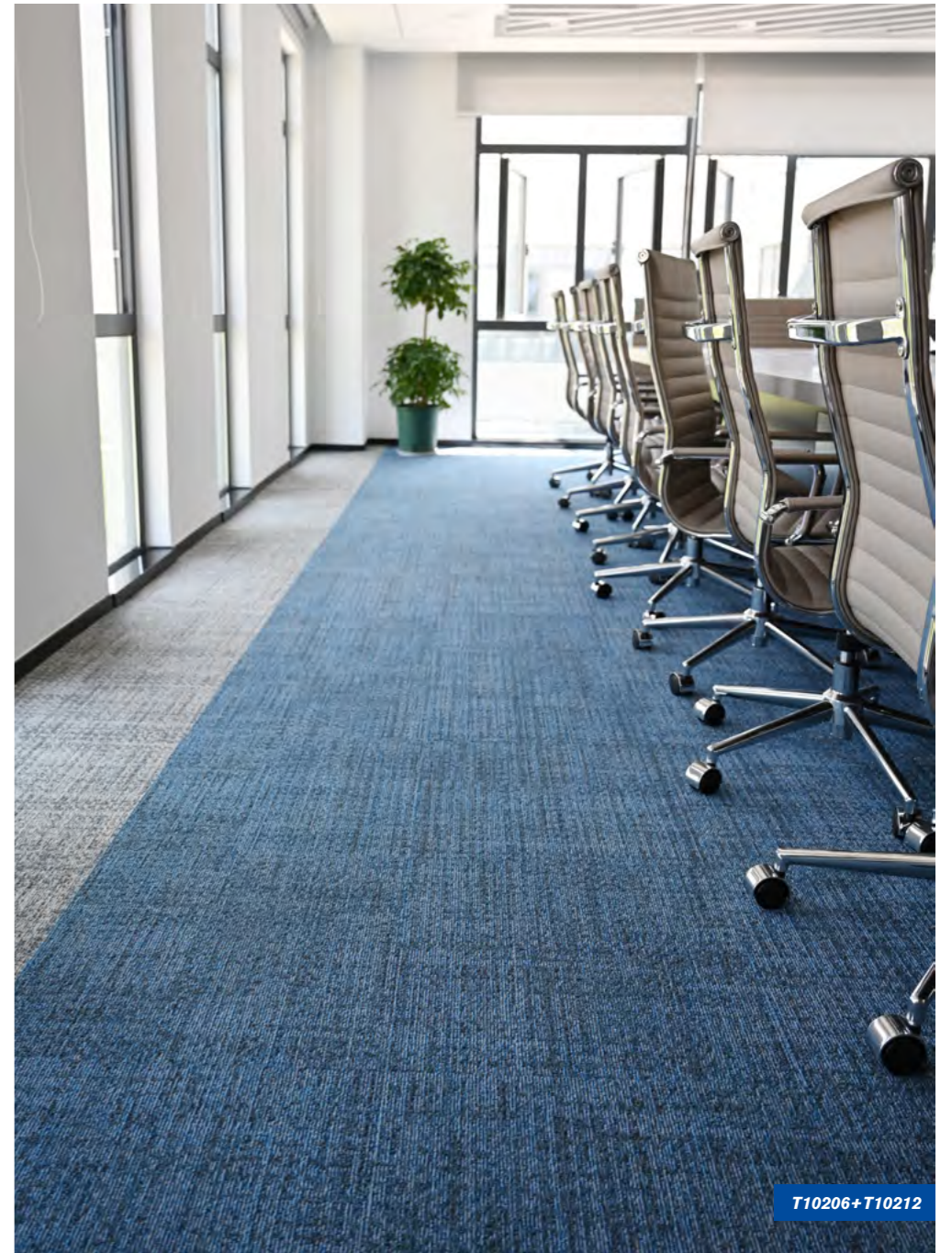


T10206+T10207+T10208+T10209





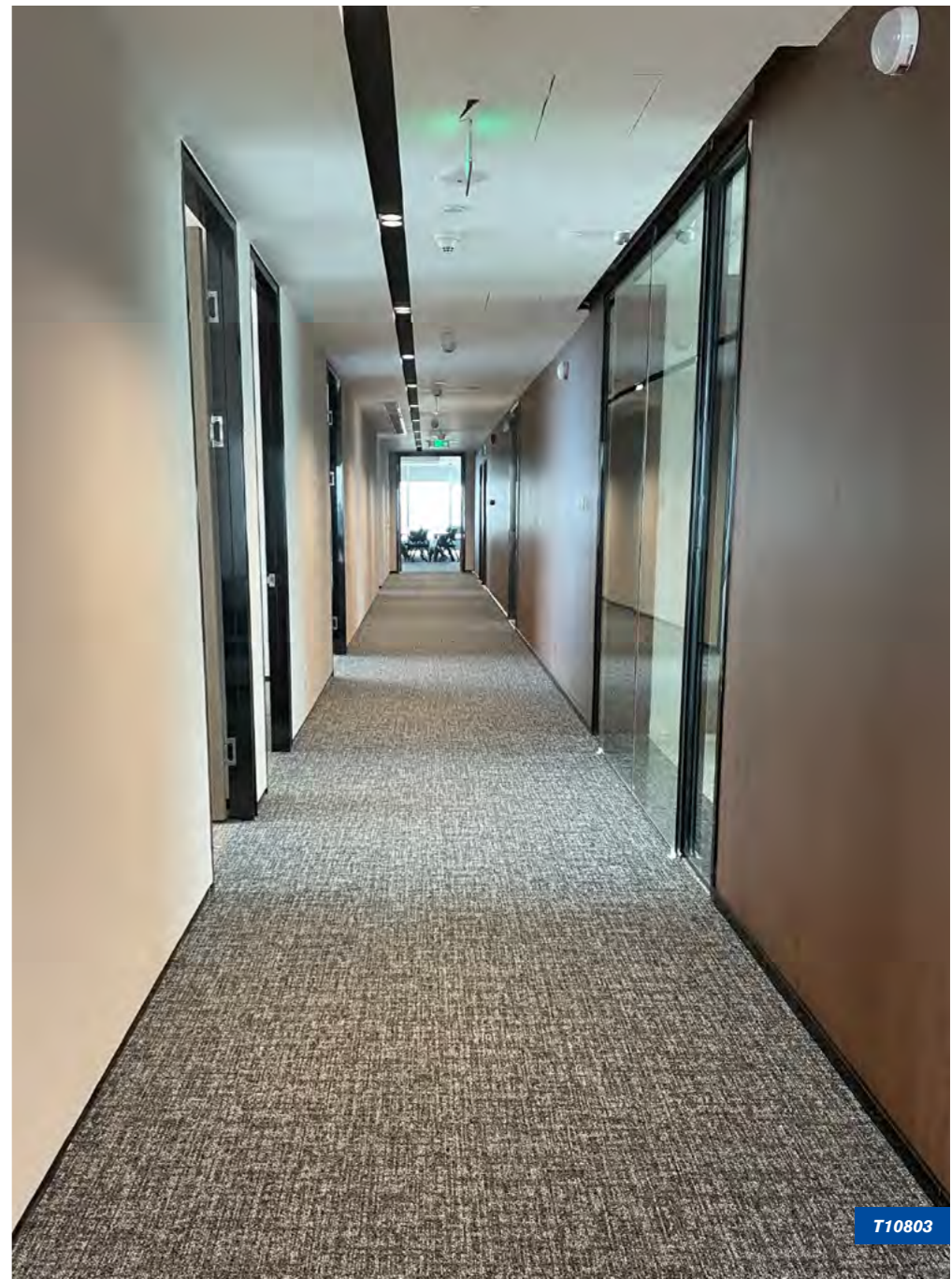
T10208



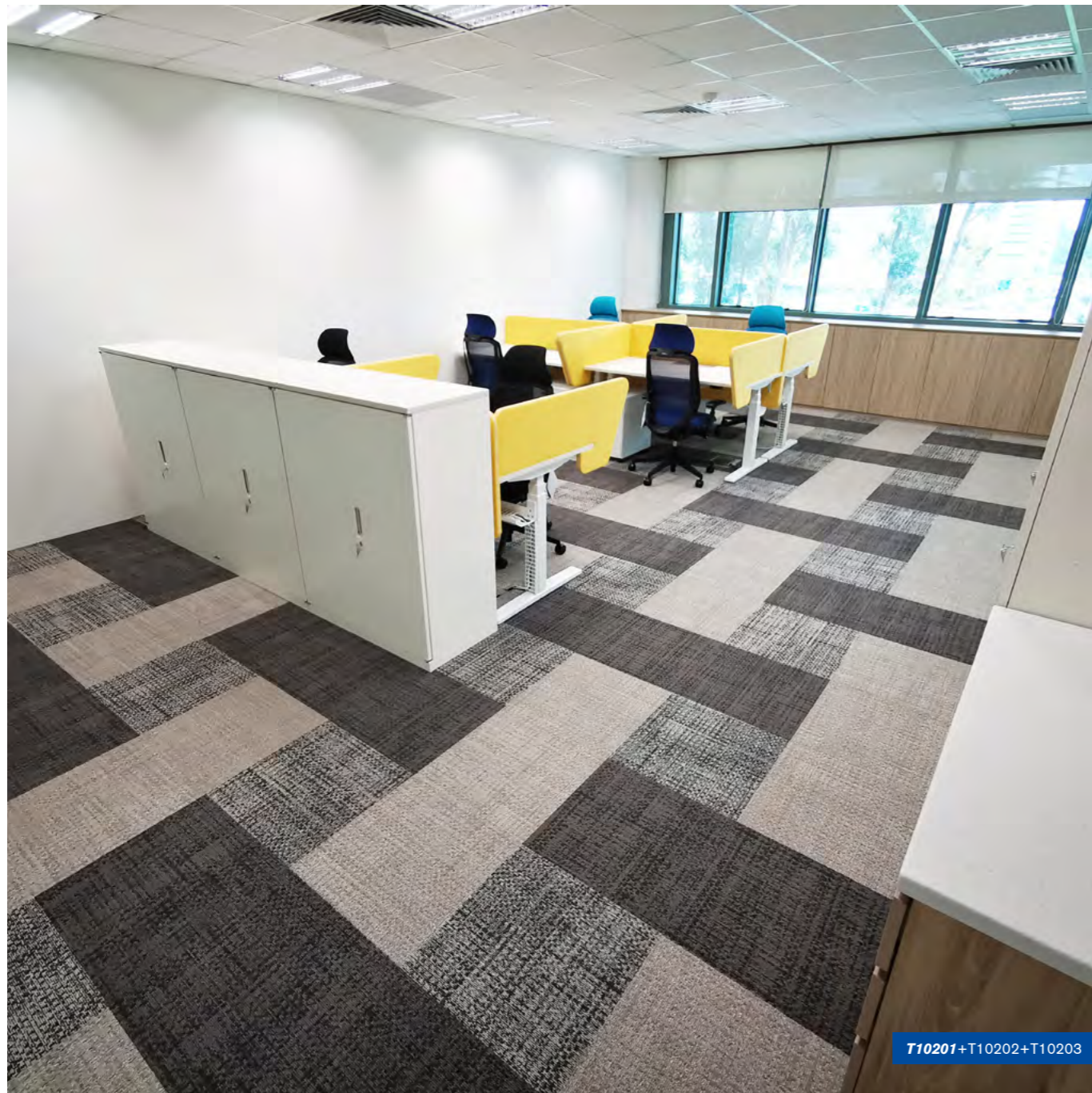




T81505



T10803



T10201+T10202+T10203



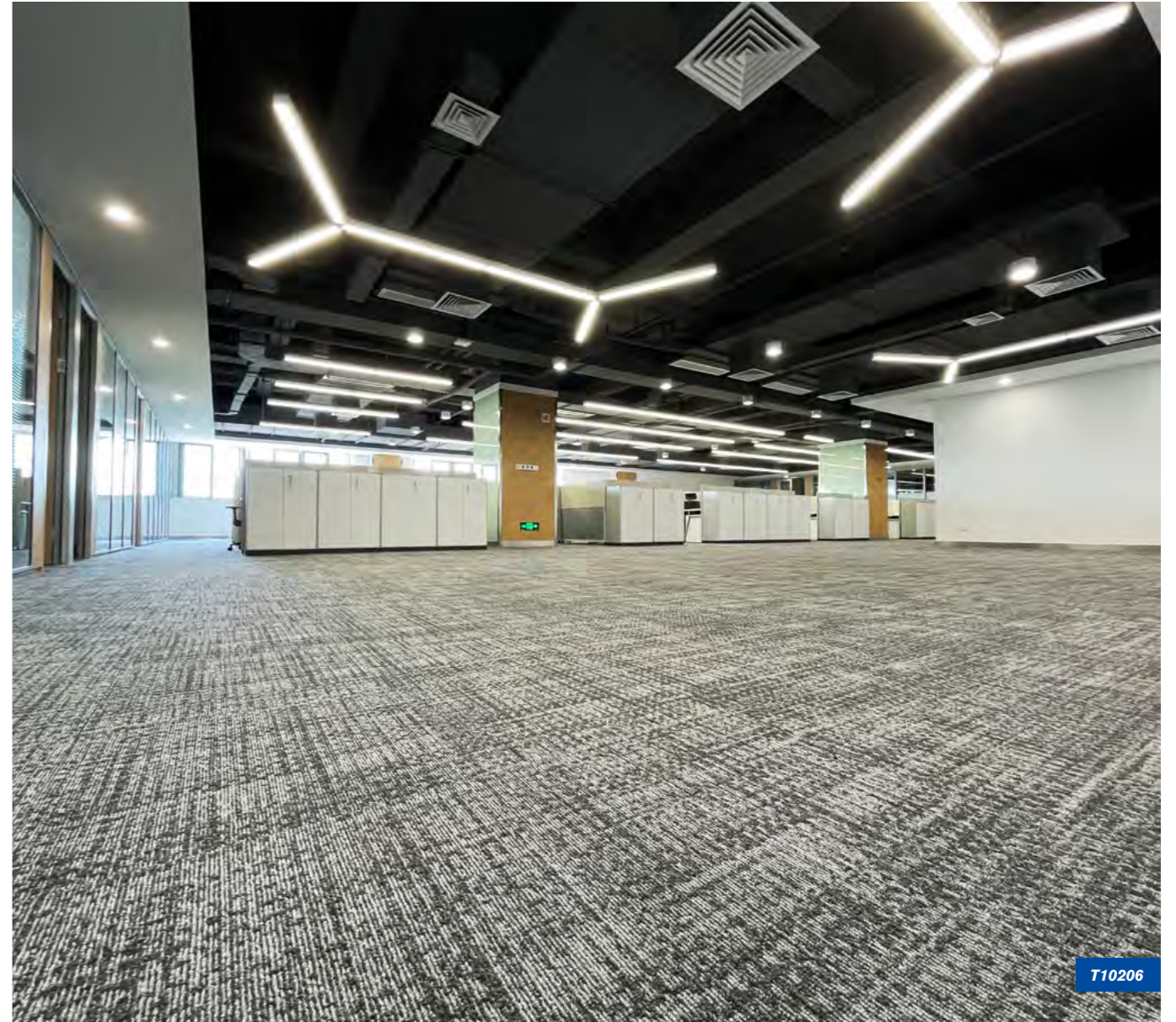
T10206+T10208+T10209



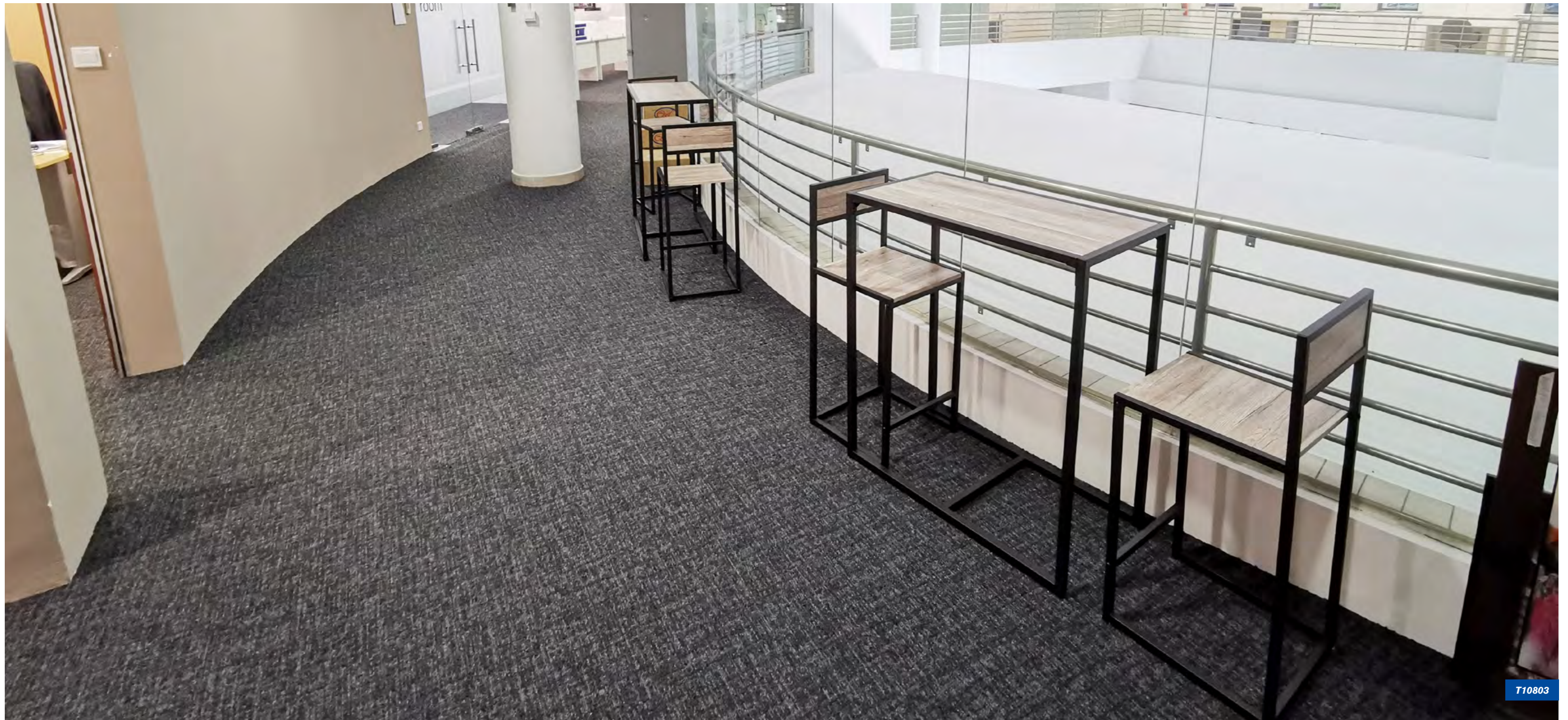
T10206+T10207+T10208+T10209



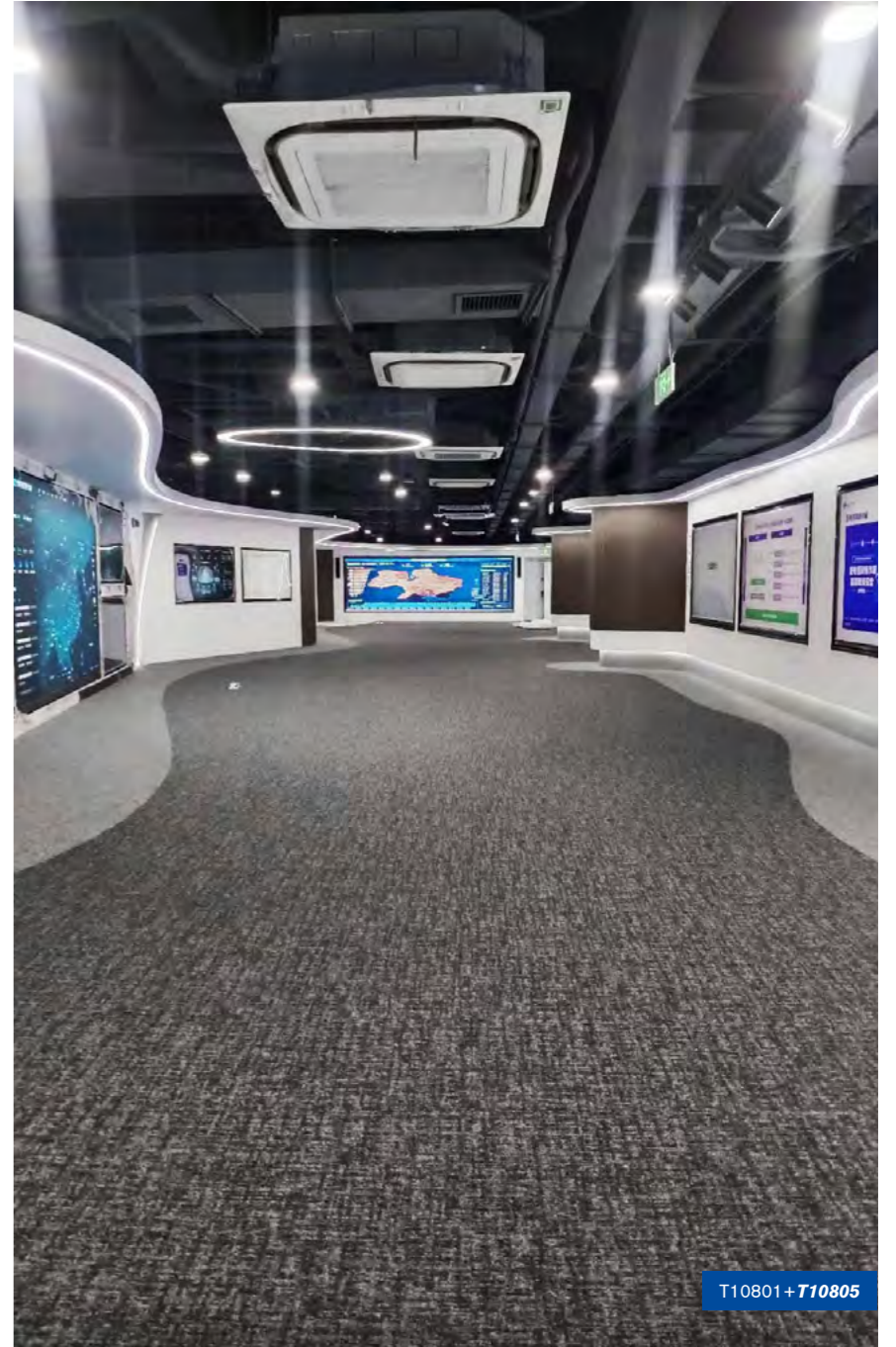
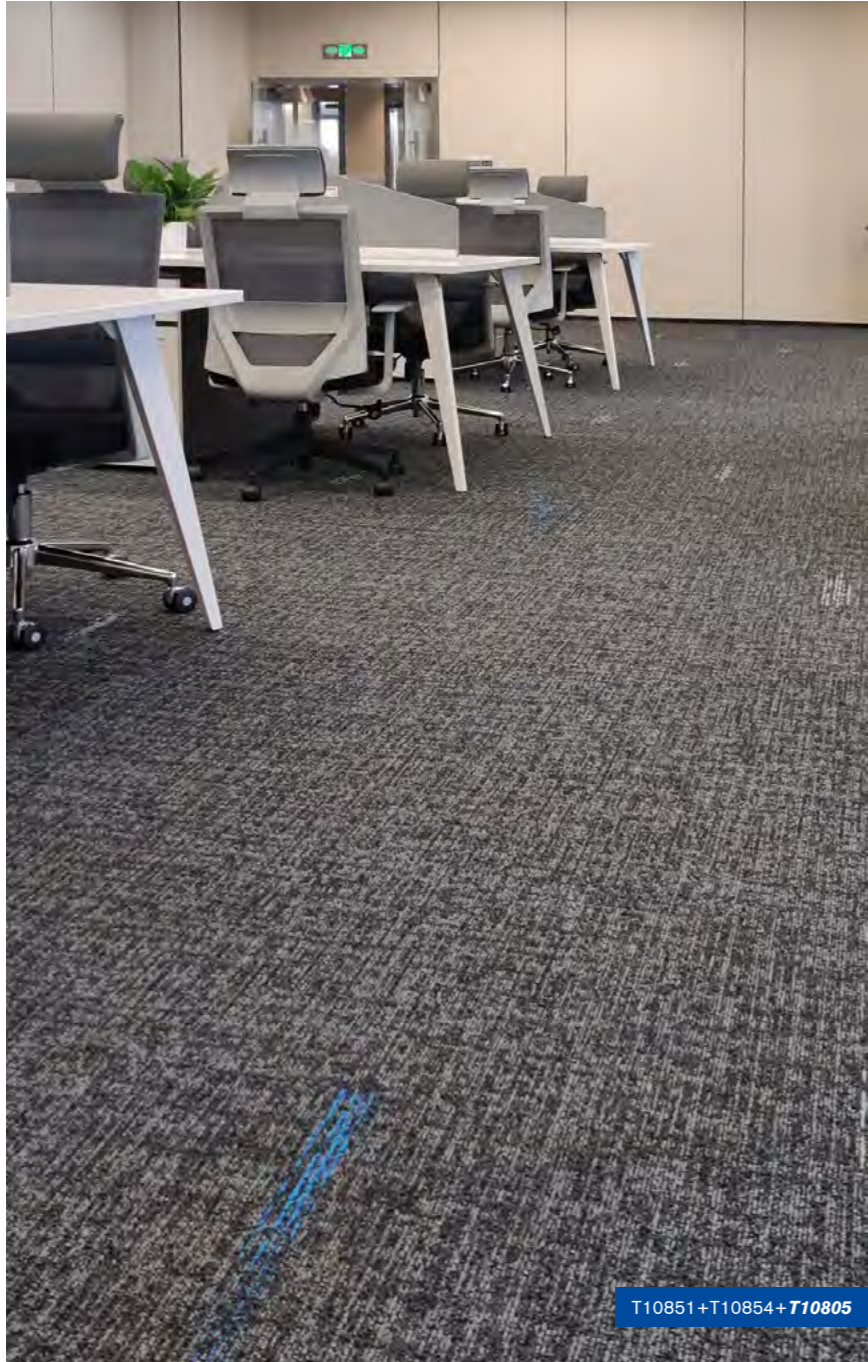
T10206+T10208



T10206

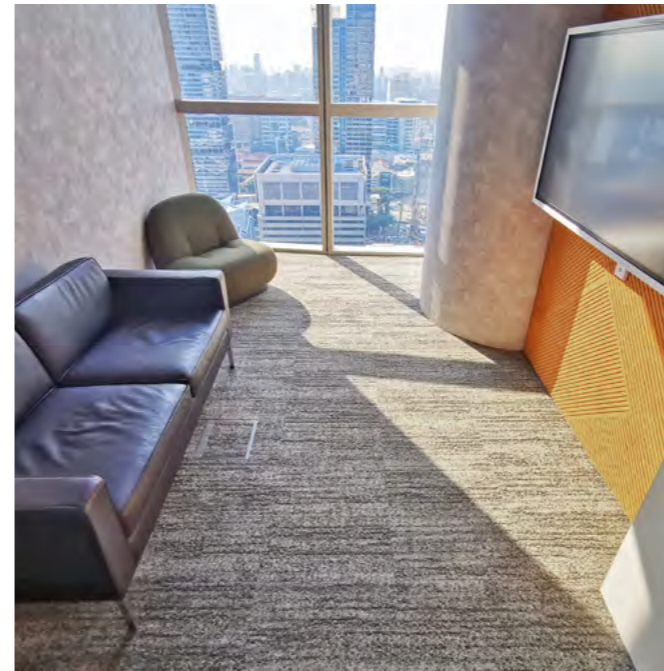


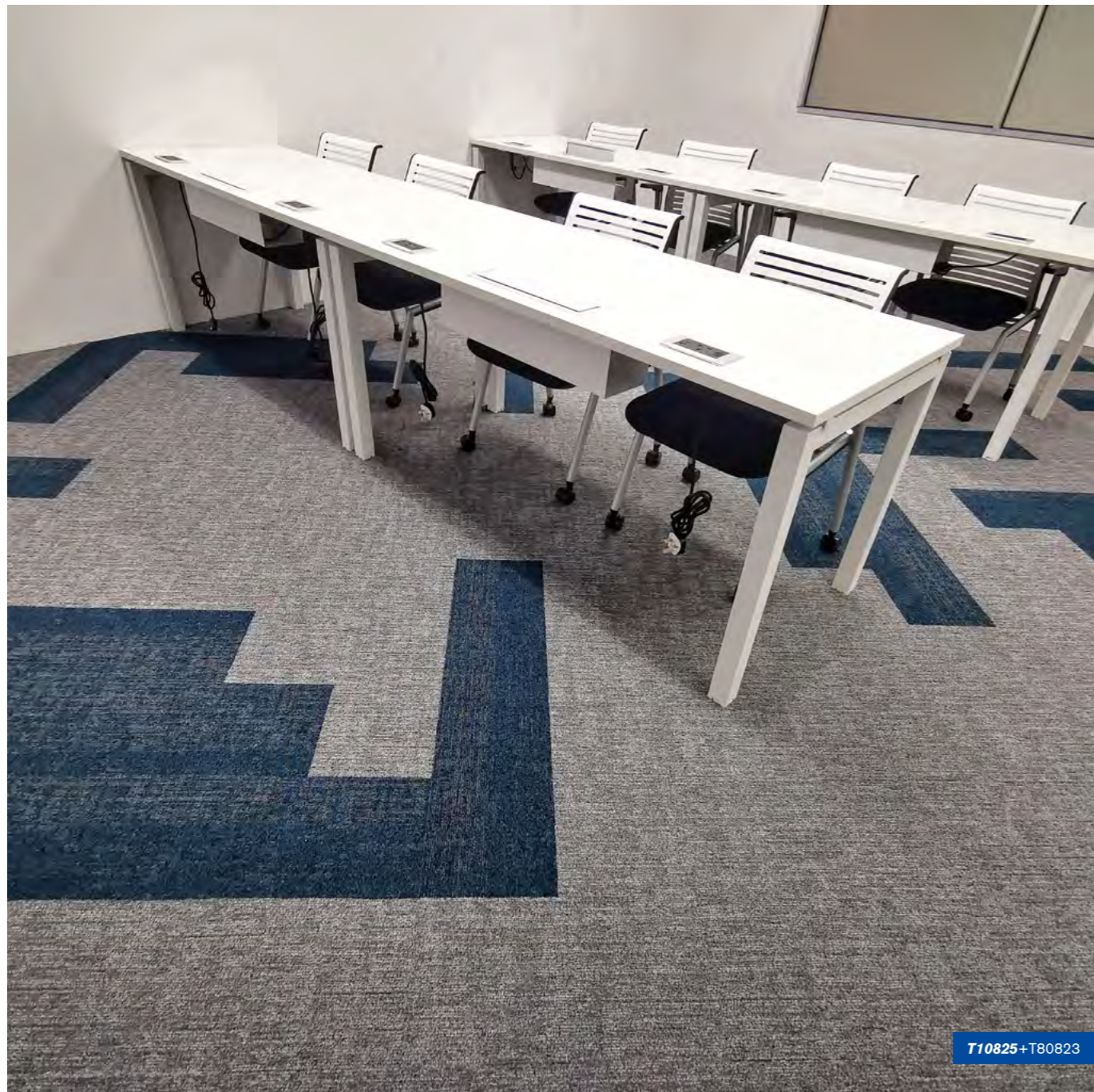
T10803



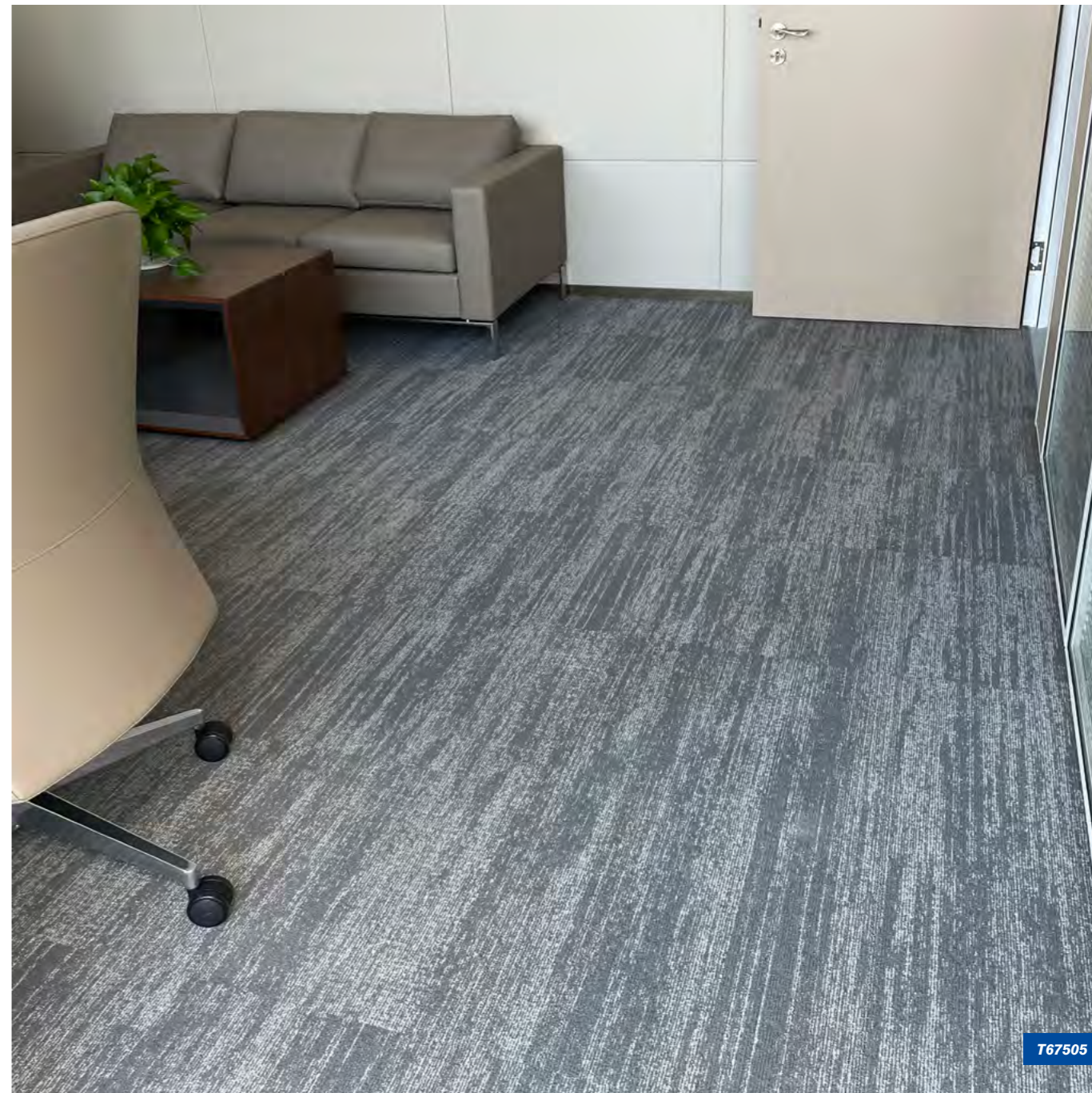




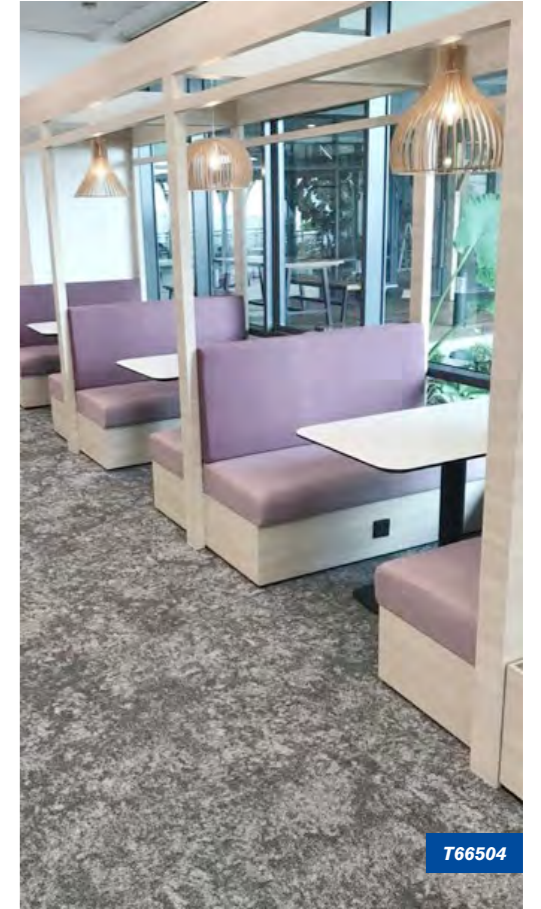




T10825+T80823



T67505



## Linen T102

Face Yarn	nexlon™ Premium Solution Dyed Nylon featured with quartz
Construction	Hi / Mid / Lo Loop
Pile Height	5.5 / 4.5 / 3.0 mm
Tile Size	500 mm x 500 mm
Standard Backing	TUNTEX Duraback
Foot Traffic	Heavy
Treatment	Stainshield Treatment: <a href="#">STAINSHIELD™</a> Soil Guard Treatment: <a href="#">SOILGUARD™</a>

## Glacier T675

Face Yarn	nexlon™ Premium Solution Dyed Nylon featured with quartz
Construction	Hi / Mid / Lo Loop
Pile Height	6.0 / 5.0 / 3.5 mm
Tile Size	500 mm x 500 mm
Standard Backing	TUNTEX Duraback
Foot Traffic	Heavy
Treatment	Stainshield Treatment: <a href="#">STAINSHIELD™</a> Soil Guard Treatment: <a href="#">SOILGUARD™</a>

## ReGenerate T108

Face Yarn	nexlon™ Premium Solution Dyed Nylon
Construction	Hi / Mid / Lo Loop
Pile Height	5.0 / 4.5 / 3.0 mm
Tile Size	500 mm x 500 mm
Standard Backing	TUNTEX Duraback
Foot Traffic	Heavy
Treatment	Stainshield Treatment: <a href="#">STAINSHIELD™</a> Soil Guard Treatment: <a href="#">SOILGUARD™</a>

## Night Falls T815

Face Yarn	nexlon™ Premium Solution Dyed Nylon featured with aircell
Construction	Hi / Mid / Lo Loop
Pile Height	7.0 / 4.5 / 3.5 mm
Tile Size	250 mm x 1000 mm
Standard Backing	TUNTEX Duraback
Foot Traffic	Heavy
Treatment	Stainshield Treatment: <a href="#">STAINSHIELD™</a> Soil Guard Treatment: <a href="#">SOILGUARD™</a>

## Granite T665

Face Yarn	nexlon™ Premium Solution Dyed Nylon
Construction	Multi Hi / Lo Loop
Pile Height	5.0 - 3.0 mm
Tile Size	500 mm x 500 mm
Standard Backing	TUNTEX Duraback
Foot Traffic	Heavy
Treatment	Stainshield Treatment: <a href="#">STAINSHIELD™</a> Soil Guard Treatment: <a href="#">SOILGUARD™</a>

## Classic Track T660

Face Yarn	nexlon™ Premium Solution Dyed Nylon
Construction	Hi / Lo Loop
Pile Height	4.0 / 3.5 mm
Tile Size	500 mm x 500 mm
Standard Backing	TUNTEX Duraback
Foot Traffic	Heavy
Treatment	Stainshield Treatment: <a href="#">STAINSHIELD™</a> Soil Guard Treatment: <a href="#">SOILGUARD™</a>

## Torrent T601

Face Yarn	nexlon™ Premium Solution Dyed Nylon
Construction	High Cut Low Loop
Pile Height	8.0 / 5.0 mm
Tile Size	500 mm x 500 mm
Standard Backing	TUNTEX Duraback
Foot Traffic	Moderate
Treatment	Stainshield Treatment: <a href="#">STAINSHIELD™</a> Soil Guard Treatment: <a href="#">SOILGUARD™</a>

## Track Connection T690

Face Yarn	nexlon™ Premium Solution Dyed Nylon
Construction	Hi / Lo Loop
Pile Height	4.0 / 3.5 mm
Tile Size	500 mm x 500 mm
Standard Backing	TUNTEX Duraback
Foot Traffic	Heavy
Treatment	Stainshield Treatment: <a href="#">STAINSHIELD™</a> Soil Guard Treatment: <a href="#">SOILGUARD™</a>

**ShangHai Office**

666 ShenHong Rd., ZhengRong Center,  
Bldg 1, 3F, ShangHai, 201106, China  
TEL: +86 21 6233 3488  
EMAIL: ShangHai@tuntexcarpet.com

**Taiwan Office**

No.1, ChengGong Rd., West Central Dist,  
Tainan City, 70050, Taiwan  
TEL: +852 9181 9610  
EMAIL: Taiwan@tuntexcarpet.com

**HongKong Office**

Room 2306, Billion Trade Centre, 31 HungTo Rd.,  
Kowloon, 852, HongKong  
TEL: +852 28580353  
EMAIL: HongKong@tuntexcarpet.com

**Japan Office**

3-16-10, Yushima, Bunkyo-ku, Tokyo, 113-0034, Japan  
TEL: +81 3 38345148  
EMAIL: Japan@tuntex-carpet.com

**Singapore Office<South East Asia>**

No.60 Paya Lebar Rd., #10-43 Paya Lebar Square,  
Singapore, 409051  
EMAIL: SouthEastAsia@tuntexcarpet.com

**UK Office<Europe, Middle East, Africa and India>**

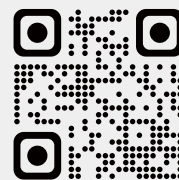
Yoxall Lodge, Scotch Hill Rd., Newchurch, Burton on Trent,  
DE13 8RL, UK  
TEL: +44 7836 506105  
EMAIL: UK@tuntexcarpet.com

**Australia Office<Australia and New Zealand>**

5 Coolaroo Avenue, Hurstbridge, Victoria, 3099, Australia  
TEL: +86 182 0622 3276  
EMAIL: Australia@tuntexcarpet.com

**Mexico Office<Latin America>**

General Salvador Alvarado 56. Col. Escandon I secc. Del.  
Miguel Hidalgo. CP 11800. Mexico  
TEL: +52 1 55 1654 0939  
EMAIL: LatinAmerica@tuntexcarpet.com



Official Website



Official Wechat