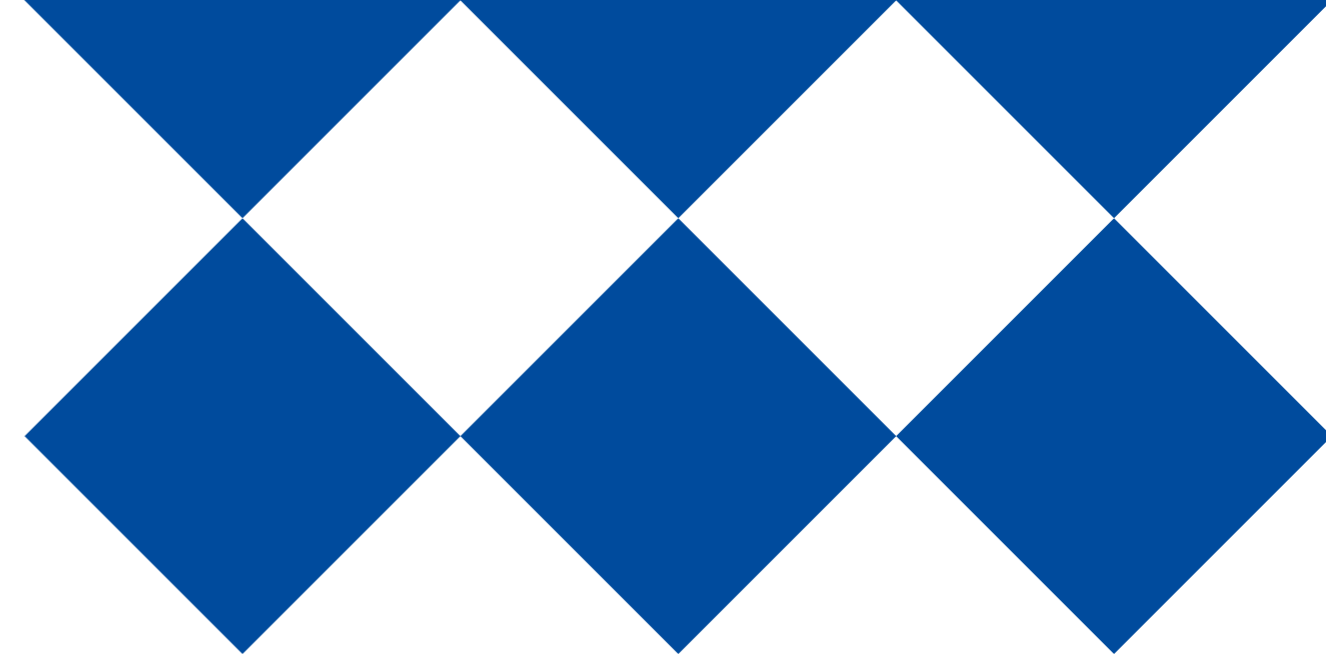


**ISSUE 8.0.1  
FOR  
TUNTEX™**



**08**

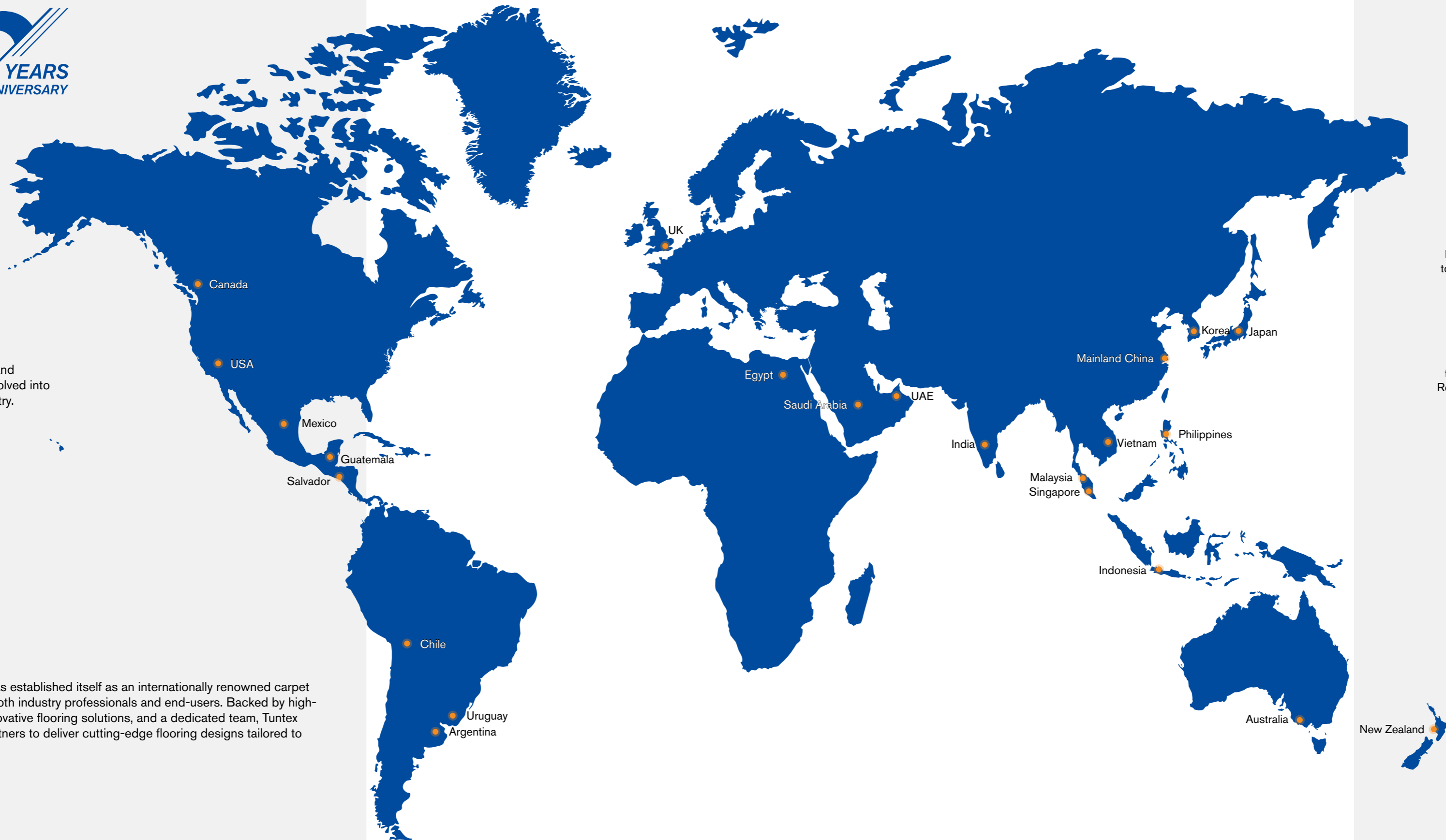


**A leading carpet manufacturer  
dedicated to green technology and  
environmentally friendly  
production methods.**

# 56 YEARS ANNIVERSARY

With 56 years of expertise and development, Tuntex has evolved into a leading brand in the industry.

Founded in 1968, Tuntex has established itself as an internationally renowned carpet brand, highly regarded by both industry professionals and end-users. Backed by high-quality carpet products, innovative flooring solutions, and a dedicated team, Tuntex collaborates with global partners to deliver cutting-edge flooring designs tailored to commercial spaces.



## 1968

Tuntex established as a carpet brand.

## 1994

Launched a large-scale production facility in Jiangsu Province, China.

## 1995

Implemented advanced wastewater treatment systems.

## 2008

Became one of the first Chinese carpet brands to earn the prestigious Green Label certification from the Carpet and Rug Institute (CRI), U.S.

## 2012

Pioneered a comprehensive sustainability framework, driven by the 3R principle (Reduce, Reuse, Recycle), integrating products, materials, and production processes.

## 2017

Prioritized the effects of product on health and environmental sustainability, achieving full transparency in material disclosures.

## 2021

Unveiled aircell™, an innovative yarn featuring a unique triangular hollow structure, dramatically enhancing carpet performance.

## 2023

Launched LuxCushion™, a next-generation carpet backing system designed to elevate both comfort and the overall spatial experience.

## 2024

Inaugurated a new state-of-the-art factory to further advance sustainability and innovation in manufacturing.

# Innovative

Tuntex is always on the look out for technological opportunities that can bring more value to our partners and customers. For Tuntex, it is the mindset of constantly challenging ourselves, and reshaping what we think we know.

**TECHNOLOGY**

**DESIGN**

**SUSTAINABLE**

# 01

nexlon™

nexlon™ is a premium quality nylon fiber developed and manufactured exclusively by Tuntex. By applying Solution Dyed Technology, it mixes and melts colors together. nexlon™'s consistent and solid color fastness ensures long-time visual enjoyment.



# 02

LUXCUSHION™

LuxCushion™ is a unique backing system released by Tuntex. By converting high resilience nylon fiber into unique backings, LuxCushion™ redefines the softness of carpets, taking performance and comfort experience to the next level. Underfoot comfort and true environmental benefits are finally here.



# 01 nexlon™

Tuntex is one of a very few carpet manufacturers that are completely vertical, with our ability to manufacture in-house Solution Dyed Nylon - nexlon™.



**Innovative**

Tuntex's strong capabilities enable more types of yarns to be developed to meet the changing trends.



**200+ Colors**

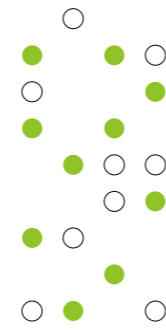
There are over 200 colors that can be provided by nexlon™ based on market demands.



**Sustainable Solution**

nexlon™ is available for recycling to produce new yarn, backing, and carpets.

## Premium Solution Dyed



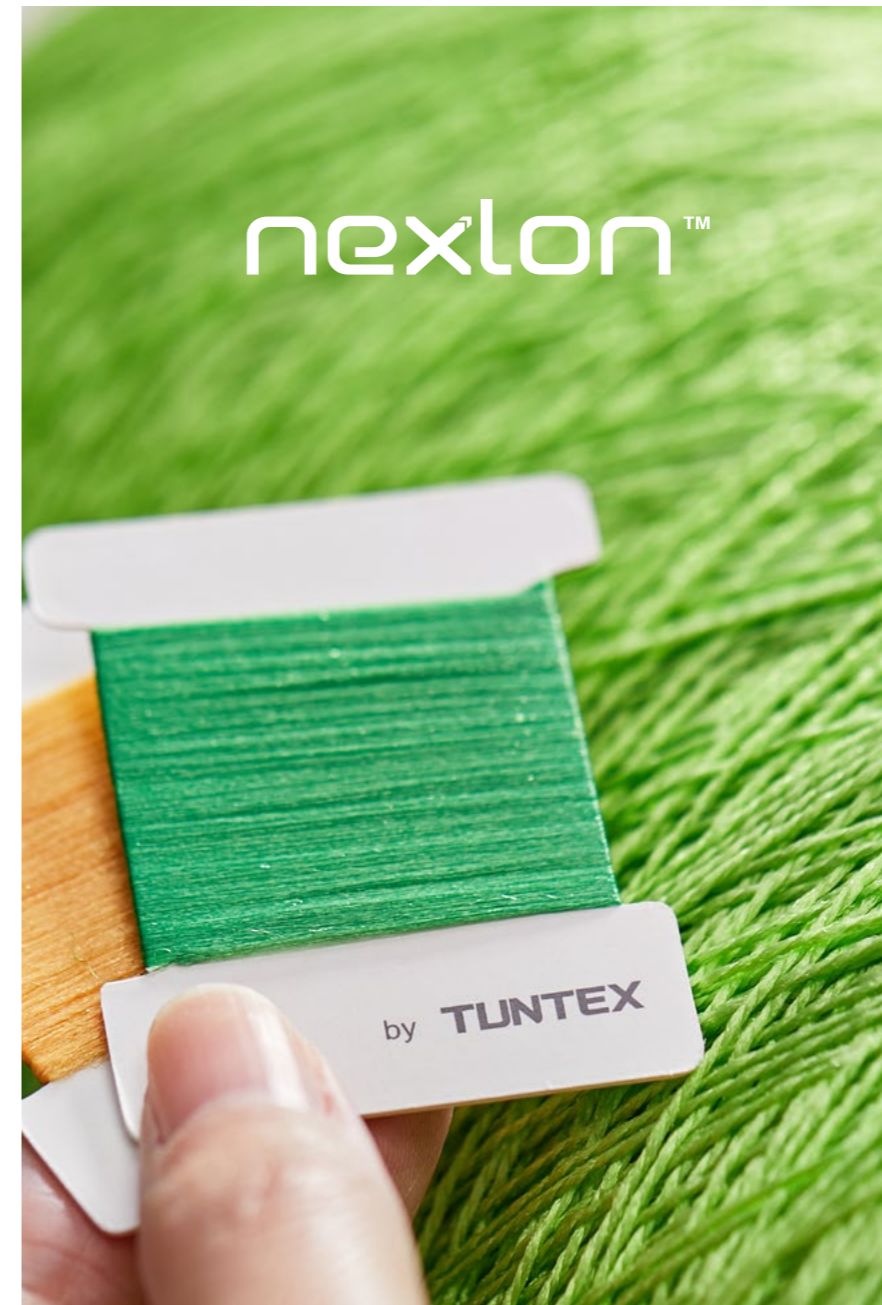
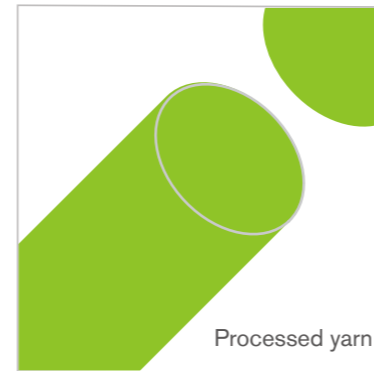
nexlon™ is manufactured using Solution Dyed Technology. This method mixes and melts colors together to achieve a consistent and solid color fastness. As a result, the yarn has excellent resistance to fading even using harsh cleaning methods.

Nylon Chips

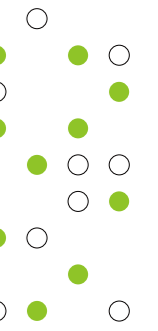


+

Masterbatch



## Outstanding Color Fastness



Soak one end of the carpet sample into the diluted bleach water for 30 minutes:

**Solution Dyed**



Before



After

**White Yarn**



Before



After

Our study found that even using a bleach solution, Tuntex carpet always has excellent color fastness. It ensures that the product can be used for a long time and remain beautiful, bringing lasting fresh visual enjoyment.



# R&D

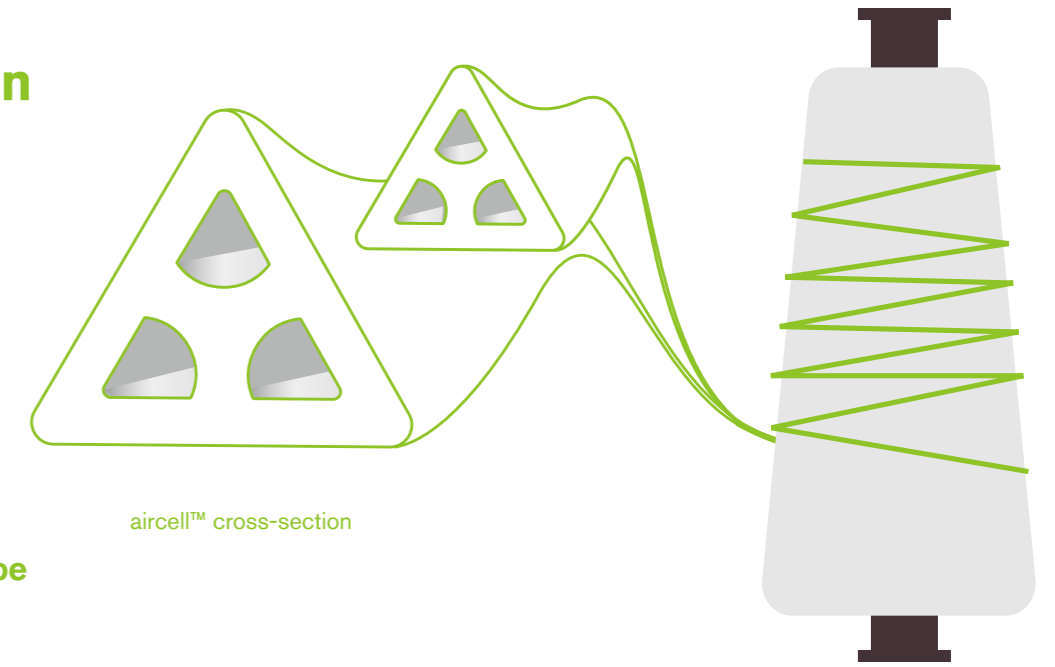
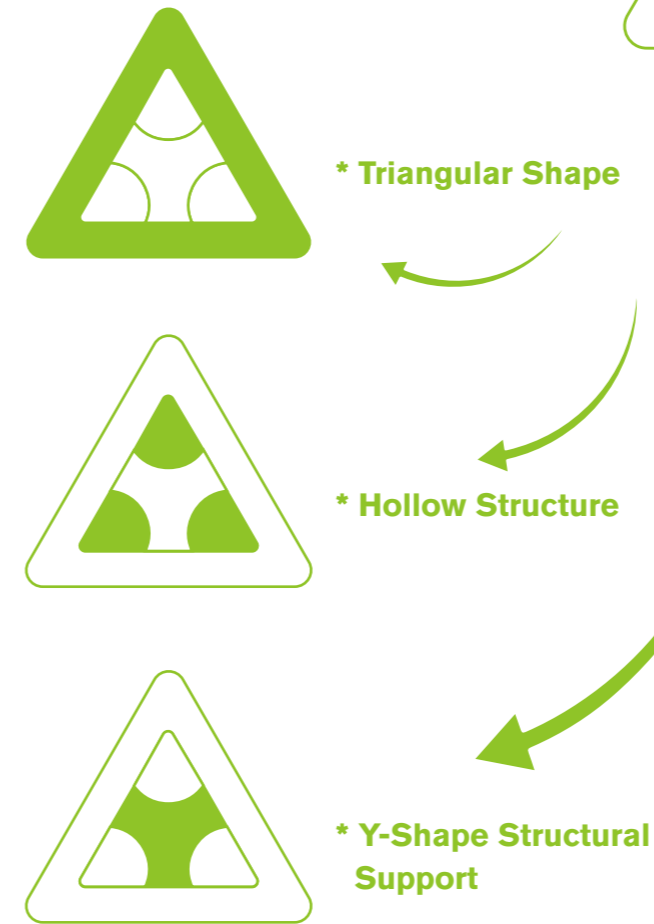
aircell™ is an innovative hollow filament fiber that is developed and manufactured exclusively by Tuntex. The combination of the Triangular cross-section, Hollow structure and Y-Shaped configuration provides enhanced performance, easier maintenance and long lasting durability to our carpets.



aircell™

More Bulk  
More Bounce  
More Benefit

## Unique Yarn Configuration

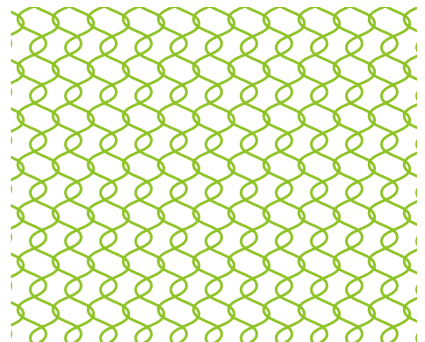


aircell™ cross-section

## Enhanced Polymer



\* Polymer Structure For Typical Yarn

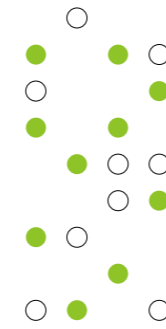


\* Enhanced Polymer To Achieve More Bounce Effect

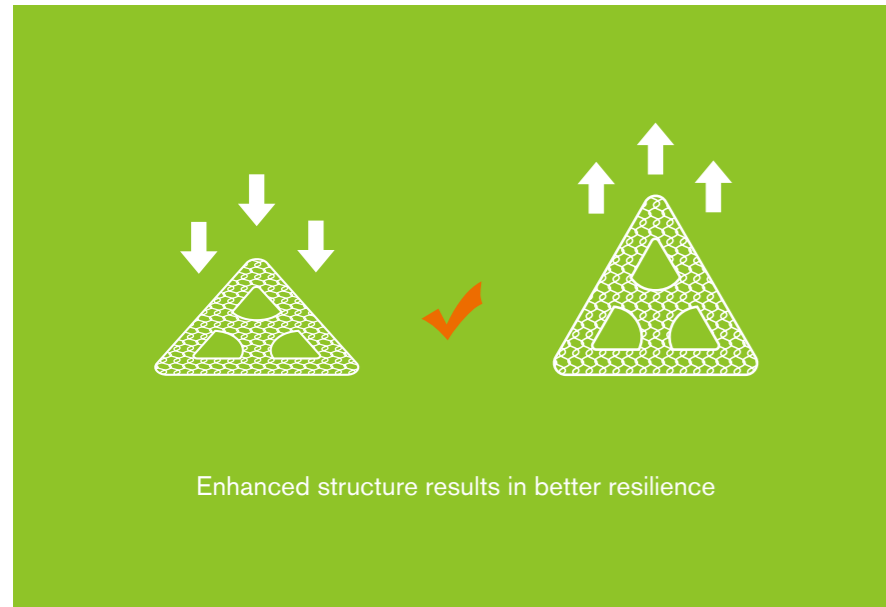
The cross-section of aircell™ filament is designed as a triangular structure with smooth surface. The hollow structure comes in a three-hole shape, allowing air to be trapped in the voids, increasing the overall volume of the filament.

aircell™ utilizes a premium solution dyed nylon, the same as all nexlon™ products, but the molecular structure of its polymer has been modified to enhance its spring effect, and hence achieve better resilience and durability for the carpets.

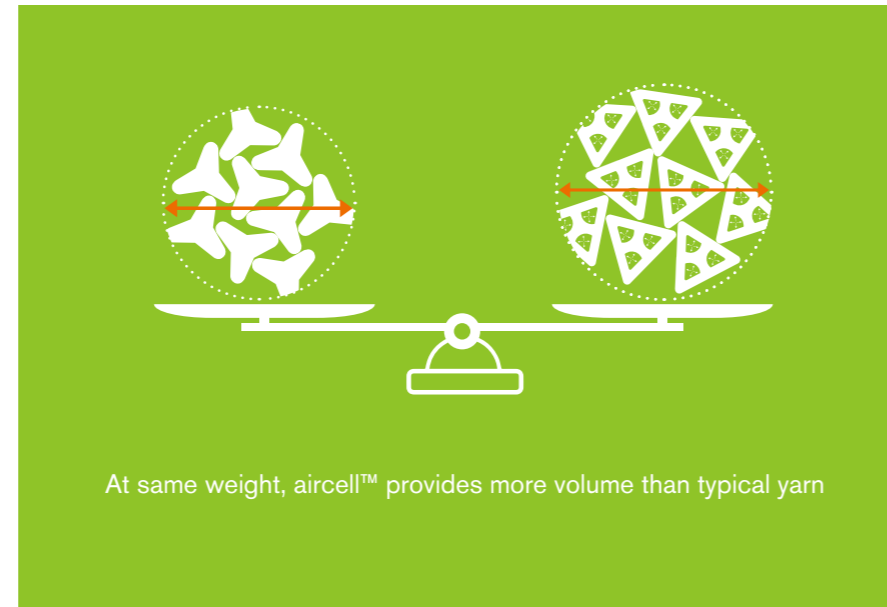
# Technical Strength



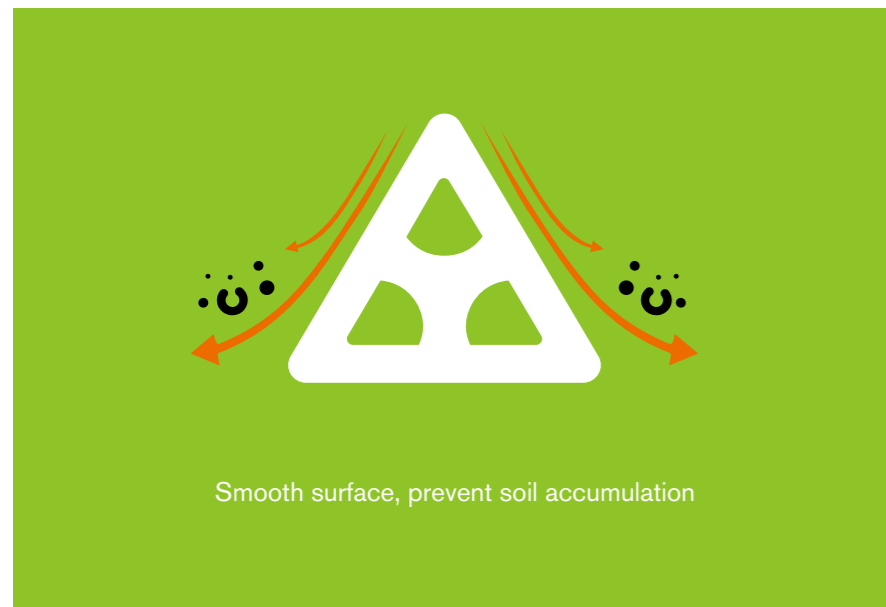
## Improved Resilience



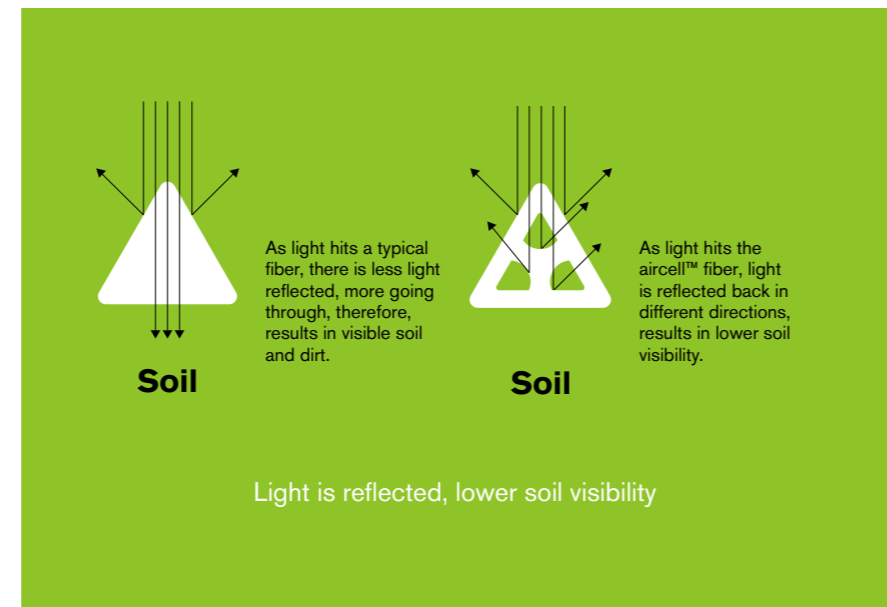
## Increased Bulkiness



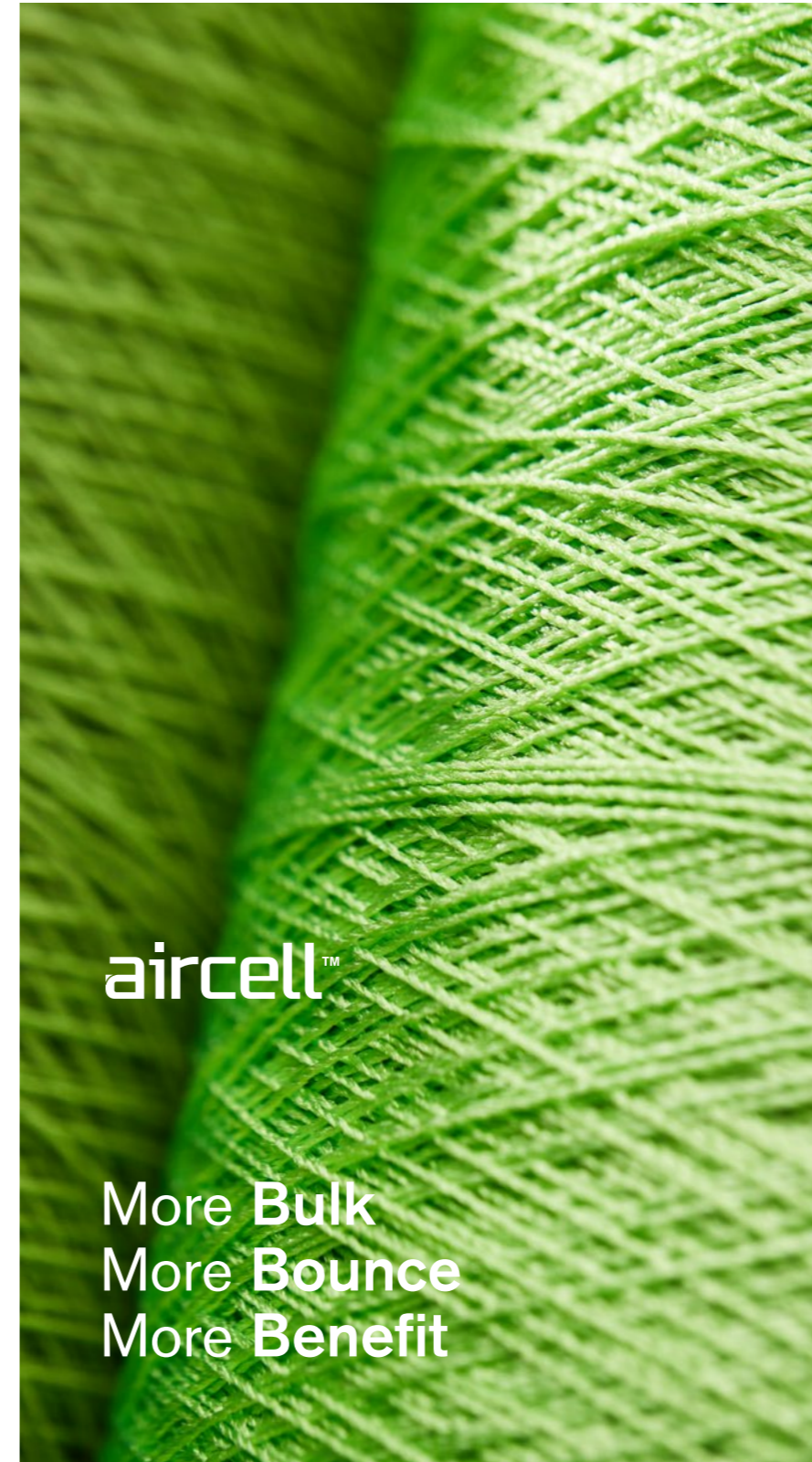
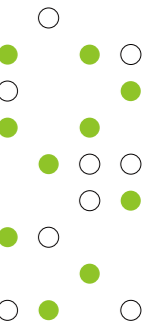
## Soil Releasing



## Soil Hiding



# Key Benefits



## Better Performance

Tuntex is always committed to a high-quality standard and premium performance. With aircell™, Tuntex is able to further improve its carpet performance by increasing the bulkiness and resilience significantly, providing customers with better products than ever before.

## Easier Maintenance

As aircell™ can minimize soil accumulation, this reduces the chance of soil penetration into or beneath the fibers. Soil then stays on the surface, which makes cleaning and maintenance much easier for carpet users.

## Increased Durability

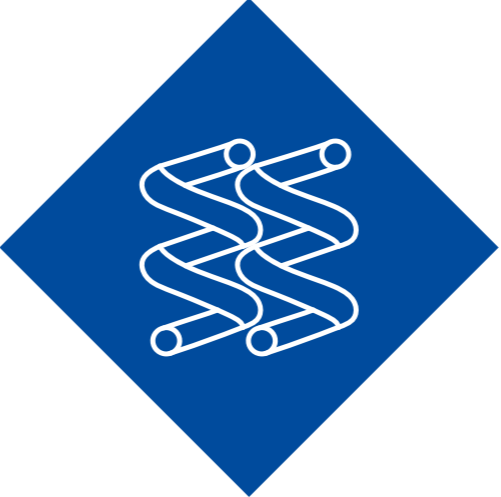
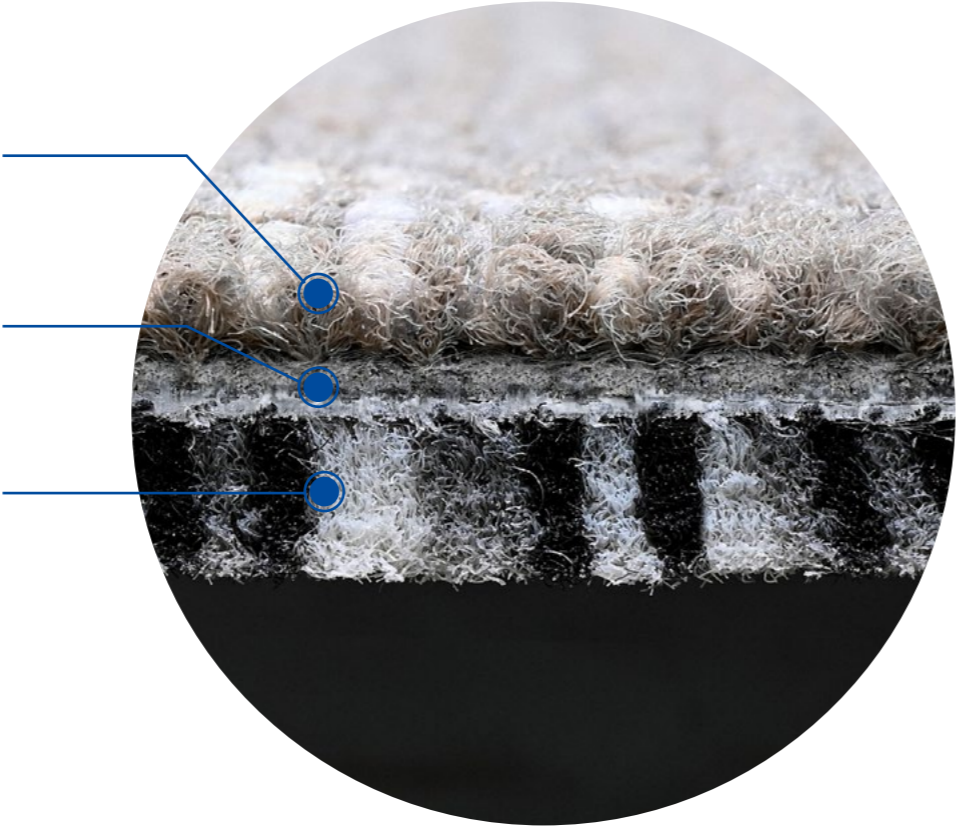
aircell™ features a unique hollow structure that improves resilience and reduces the appearance of soil, which helps carpet remain new longer, retain its bulkiness longer, and extend its usable life.



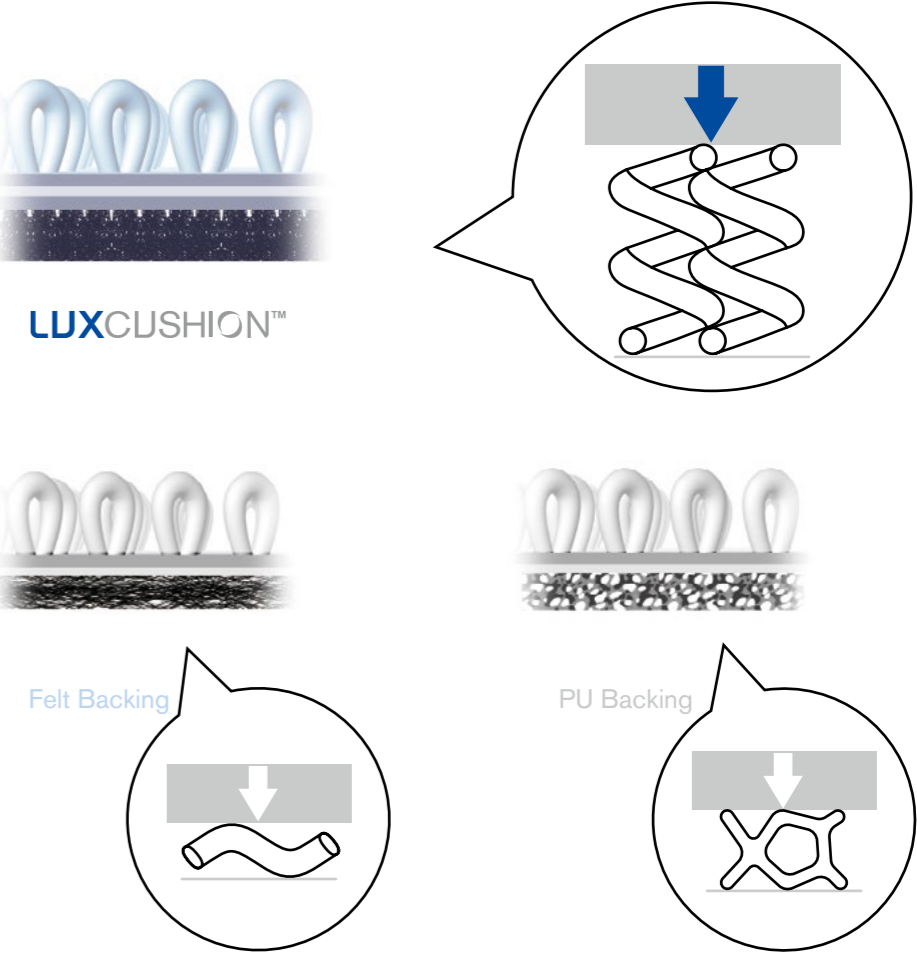
# Revolutionary New Backing System

# Creative Backing Structure

- 1** nexlon™ – premium solution dyed nylon
- 2** Reinforced fiber glass
- 3** Repurposed high resilience nylon



Different from typical backing systems, LuxCushion™ repurposes high resilience nylon that is a byproduct PU yarn wasted during carpet manufacturing process. Compared to typical felt or foam backing, LuxCushion™ shows a superior resilience performance thanks to its unique 3D structure. Tufted like "springs", LuxCushion™ provides better underfoot comfort for indoor environment.



LUXCUSHION  
02

# Patented Technology Unique Sandwich Design

the Patent Number  
Chinese Patent No.: ZL 202020360039.5  
United States Patent No.: US 11,668,046B2

# Design For Comfort



## Underfoot Comfort

The usage of high resilience nylon allows LuxCushion™ to offer adequate space to squeeze and bounce back with firm foot supports. It improves comfort level by about **30.2%** and reduces foot fatigue by about **19.8%**.



## Acoustic Comfort

With the thick layers of nylon fibers, LuxCushion™ disperses the unwanted noise in the environment. It has been tested and found to be very effective in reducing transmitted impact sound by **37dB**, which is **5** times better than LVT and **50%** better than typical backing. In addition, LuxCushion™ has a sound absorption coefficient of **0.40**, indicating impressive sound absorption capabilities.



## Long-lasting Comfort

LuxCushion™ possesses an excellent recovery rate of **91.7%** after an extremely heavy traffic test. The comfort level has been developed to support our wellness goals in the long run.



## Indoor Comfort

The unique structure of LuxCushion™ requires fewer materials during production, is plasticizer-free, and has very low TVOC. Special treatments are added to further enhance this product. LuxCushion™ helps to mitigate these health hazards and create a safer and healthier indoor environment.

# Design For Future

Tuntex has always been seeking green manufacturing through continuous innovations. The concept of sustainable development also runs through the research and development of LuxCushion™.

TUNTEX™



CALL FOR 3R

Reuse

Reduce

Recycle

Tuntex collects directly and converts these wasted yarns into available materials for the production of LuxCushion™ which maximizes the resource efficiency.

Both the face yarn and the backing are 100% recyclable to create the green cycle of carpet production.

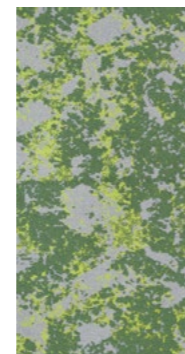
LuxCushion™ repurposes high resilience nylon that is a byproduct from yarn wasted during the carpet manufacturing process and directly reproduces into the backing in the original factory. Energy, resources and carbon emissions that were required in the past have been decreased to protect the environment.

# 01

## Prestige Line

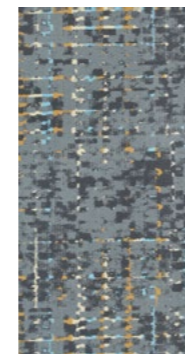
Prestige is the culmination of Tuntex art, design and craftsmanship. We carefully considered the concepts, aesthetics, styles and colors, bringing together to create excellence carpets. Indeed, Prestige is viewed as the very best of the brand.

CONTENTS



Green Field  
LC05

P 29



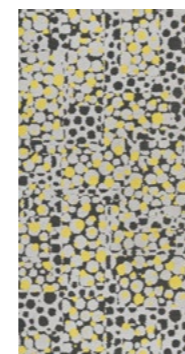
Field of Dreams  
LC06

P 30



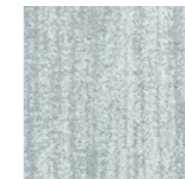
Autumn Peak  
LC07

P 31



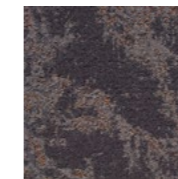
Bouquet  
LC08

P 33



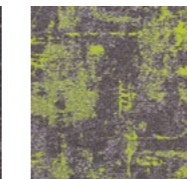
Torrent  
T601

P 35



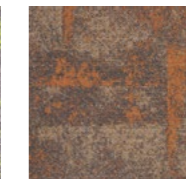
Bird's-eye on Metro  
T700

P 36



Space Cloud  
T707

P 37



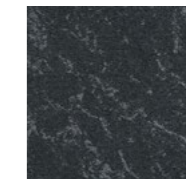
Color Dew  
T708

P 38



Flagstone  
T709

P 39



Base  
T710

P 41



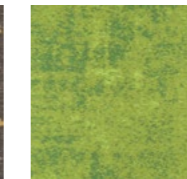
Bamboo  
T711

P 41



Blossom  
T712

P 41



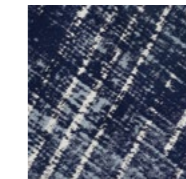
Vintage  
T716

P 43



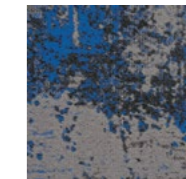
Sq Cloud  
T717

P 44



Weave Plus  
T718

P 45



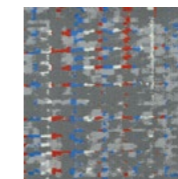
Free Form  
T719

P 46



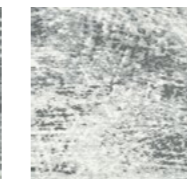
Crystalline  
T721

P 47



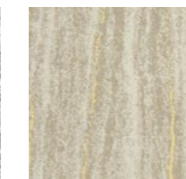
Times Square  
T722

P 48



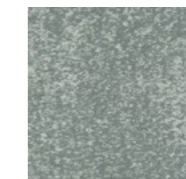
1933 Shanghai  
T723

P 49



Forest View  
T726

P 51



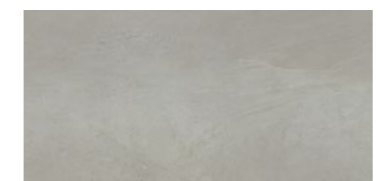
Petrichor  
T728

P 52



Moonwalk  
T725

P 50



Marble V261

P 53



Porcelain V263

P 54



Formations - V271

P 55



Formations - V272

P 55

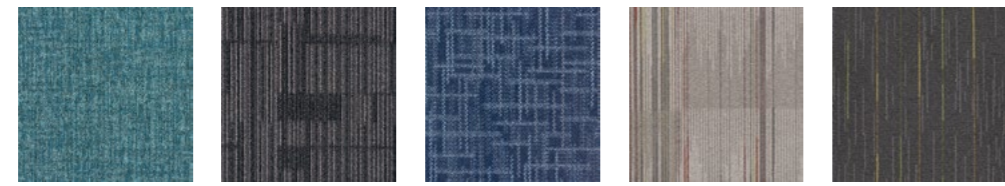


Formations - V273

P 55



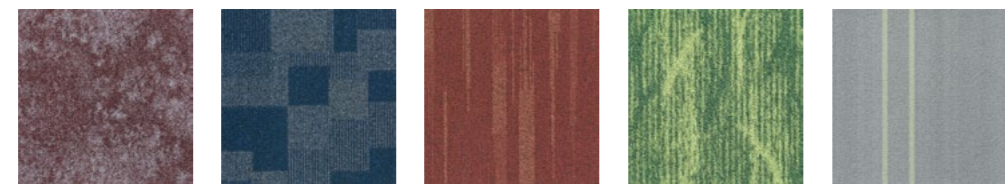
Mineral T101 P 63  
 Linen T102 P 64  
 Milano T103 P 65  
 Pulse T105 P 66  
 Light Chaser T106 P 67



ReGenerate T108 P 68  
 Circuit T613 P 69  
 Criss-cross T617 P 70  
 Spectrum T629 P 71  
 Sonic T637 P 72



Pick Up Sticks T657 P 73  
 Classic Track T660 P 75  
 Track Line T661 P 75  
 Bayou T662 P 797  
 Skate T663 P 78



Granite T665 P 79  
 Shadow T670 P 83  
 In-motion T671 P 81  
 Banyan T672 P 82  
 Time T673 P 83



Glacier T675 P 84  
 Natural Charm T676 P 85  
 Lake Hues T677 P 86  
 Track Connection T690 P 75  
 Woodland T692 P 87

# 02

## Premium Line

Premium is a sincere work created for indoor spaces and professional clients. It is a collection of high-end and high-quality products that combine aesthetic value, practicality, and sustainability, favored by a large number of customers.



Boardwalk T800 P 89  
 Color Zip T801 P 90  
 City Map T803 P 91  
 Mist T805 P 92  
 Track 25 T806 P 93  
 Sunshower T807 P 94  
 Tassels T808 P 95  
 Color Stroke T809 P 96  
 Abstract T810 P 97  
 Cube T811 P 98  
 Expression T812 P 99  
 Nouvel T813 P 100  
 Night Falls T815 P 101  
 Immerse T816 P 102  
 Sandscape T819 P 103  
 Paper Mache T850 P 104  
 Tatrix T851 P 105  
 Ripple T852 P 106  
 Reflection T855 P 107  
 Tree Walk T857 P 108  
 Bumblebees T861 P 109  
 Magnetite T863 P 110  
 Ice Shards T871 P 111  
 Tide T873 P 112  
 Denim T895 P 113  
 Snowflakes T896 P 114

# 01

# PRESTIGE LINE

High-end quality carpets with exclusive designs for luxurious spaces



Green Field	LC05	29
Field of Dreams	LC06	30
Autumn Peak	LC07	31
Bouquet	LC08	33
Torrent	T601	35
Bird's-eye on Metro	T700	36
Space Cloud	T707	37
Color Dew	T708	38
Flagstone	T709	39
Base	T710	41
Bamboo	T711	41
Blossom	T712	41
Vintage	T716	43
Sq Cloud	T717	44
Weave Plus	T718	45
Free Form	T719	46
Crystalline	T721	47
Times Square	T722	48
1933 Shanghai	T723	49
Moonwalk	T725	50
Forest View	T726	51
Petrichor	T728	52
Marble	V261	53
Porcelain	V263	54
Pastoral	V271	55
Industrial	V272	55
Formations	V273	55

---

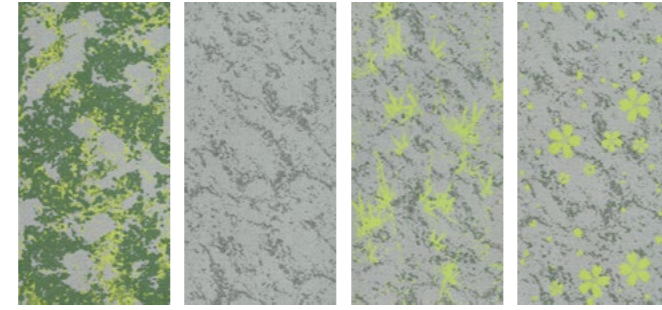
# TUNTEX PRESTIGE FOR LUXURY SPACES

Flooring reflects the space ambiance like a mirror, and the carpet with elegant beauty can bring more aesthetic and cultural presence. Tuntex Prestige is the culmination of our art, design, and expertise, using high-end craftsmanship to create a more pleasing, safe, and healthy indoor environment.



LC0510 / LC0511 Herringbone

## LC05 GREEN FIELD



LC0503  
Moss

LC0510  
Base

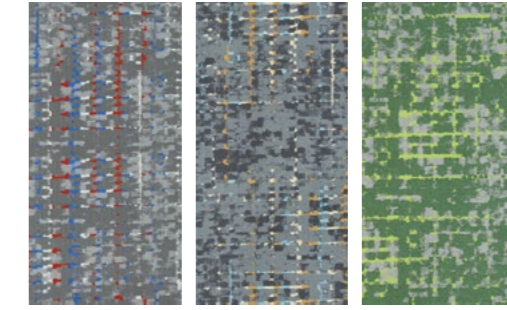
LC0511  
Bamboo

LC0512  
Blossom



LC0604 Ashlar

## LC06 FIELD OF DREAMS



LC0604  
Fantasy

LC0605  
Reverie

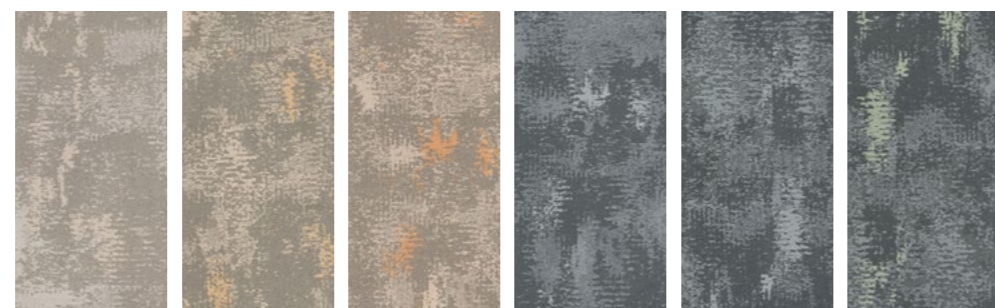
LC0609  
Fairyland



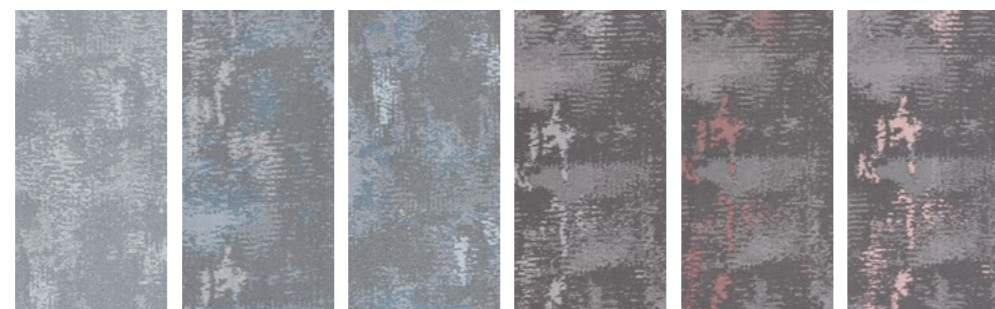
**Face Yarn:** nexlon™ Premium Solution Dyed Nylon featured with aircell  
**Construction:** Multi Hi / Lo Loop  
**Pile Height:** 7.0 - 5.0 mm  
**Tile Size:** 500 mm x 1000 mm  
**Standard Backing:** LUXCUSHION™  
**Foot Traffic:** Heavy  
**Treatment:** STAINSHIELD™ SOILGUARD™  
 ECOFRESH™ MICROSHIELD™

**Face Yarn:** nexlon™ Premium Solution Dyed Nylon  
**Construction:** Multi Hi / Lo Loop  
**Pile Height:** 9.0 - 4.5 mm  
**Tile Size:** 500 mm x 1000 mm  
**Standard Backing:** LUXCUSHION™  
**Foot Traffic:** Heavy  
**Treatment:** STAINSHIELD™ SOILGUARD™  
 ECOFRESH™ MICROSHIELD™

# LC07 AUTUMN PEAK



LC0701 Maple Basic    LC0702 Maple    LC0703 Maple Peak    LC0704 Pine Basic    LC0705 Pine    LC0706 Pine Peak



LC0707 Salvia Basic    LC0708 Salvia    LC0709 Salvia Peak    LC0710 Acer Basic    LC0711 Acer    LC0712 Acer Peak



**Face Yarn:** nexlon™ Premium Solution Dyed Nylon  
**Construction:** Multi Hi / Lo Loop  
**Pile Height:** 7.5 - 3.0 mm  
**Tile Size:** 500 mm x 1000 mm  
**Standard Backing:** LUXCUSHION™  
**Foot Traffic:** Heavy  
**Treatment:** STAINSHIELD™ ECOFRESH™

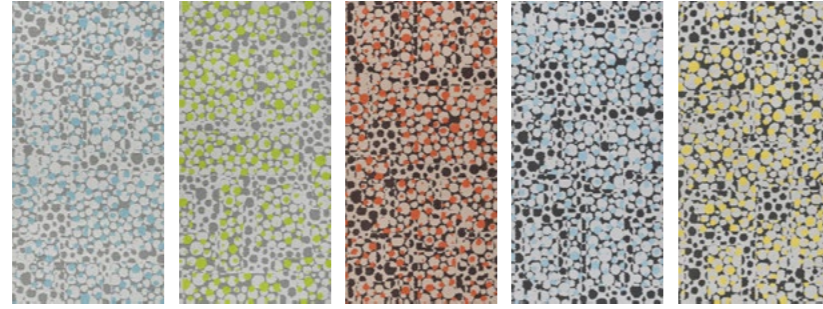
SOILGUARD™ MICROSHIELD™



LC0710 / LC0711 / LC0712 Ashlar



**LC08  
BOUQUET**



LC0801 Bluebell    LC0802 Olive Leaf    LC0803 Marigold    LC0804 Blue Orchid    LC0805 Daisy



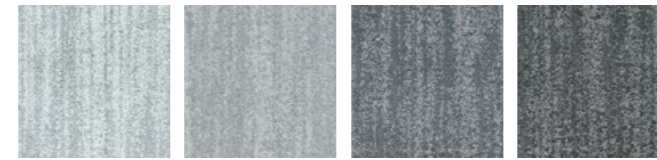
**Face Yarn:** nexlon™ Premium Solution Dyed Nylon  
**Construction:** Multi Hi / Lo Loop  
**Pile Height:** 7.5 - 3.5 mm  
**Tile Size:** 500 mm x 1000 mm  
**Standard Backing:** LUXCUSHION™  
**Foot Traffic:** Heavy  
**Treatment:** STAINSHIELD™ ECOFRESH™    SOILGUARD™ MICROSHIELD™



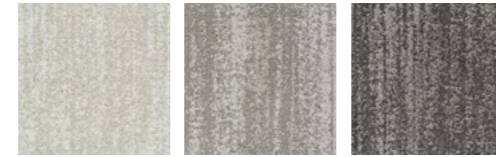
LC0803 Ashlar



## T601 TORRENT



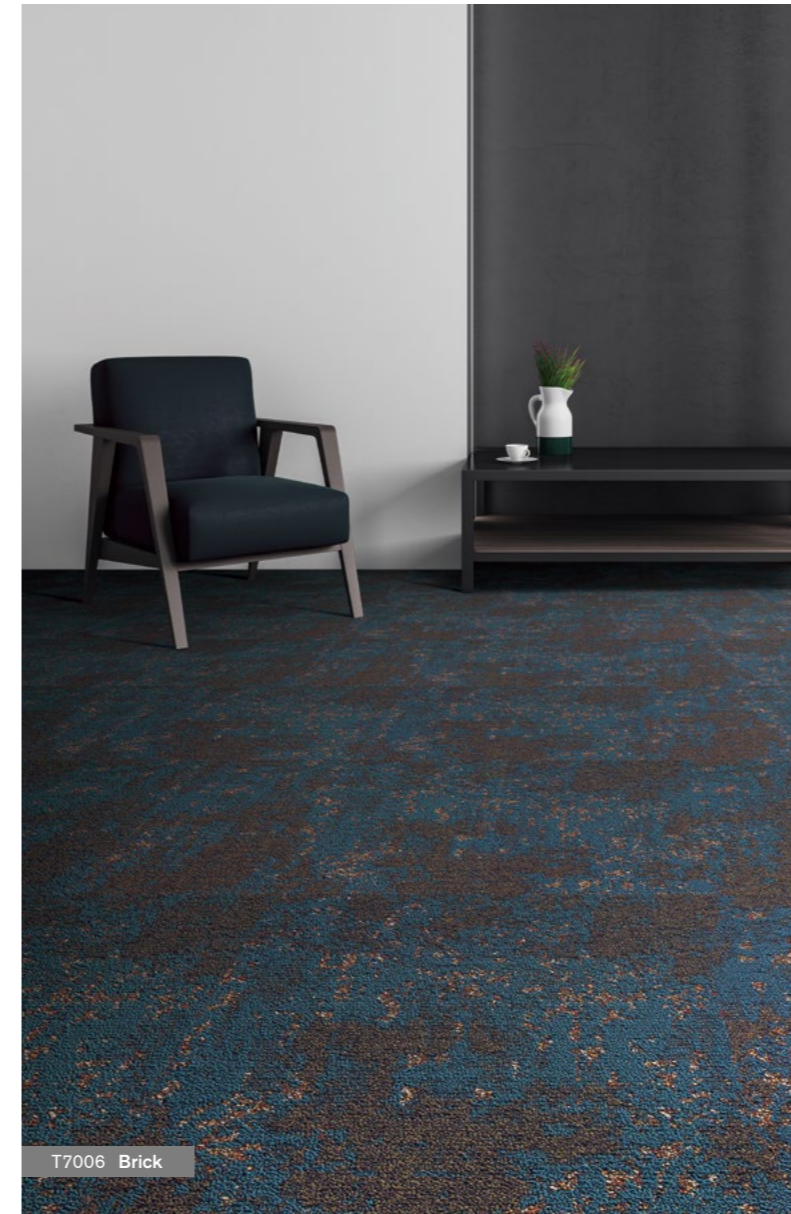
T60101 Cloud    T60107 Shadow    T60102 Slate    T60103 Pebble



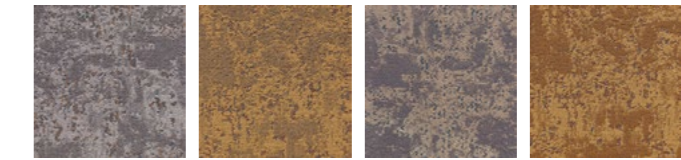
T60104 Sand Dollar    T60105 Grey    T60106 Umber

T60105 Brick

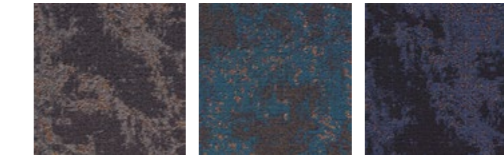
**Face Yarn:** nexlon™ Premium Solution Dyed Nylon  
**Construction:** High Cut Low Loop  
**Pile Height:** 8.0 / 5.0 mm  
**Tile Size:** 500 mm x 500 mm  
**Standard Backing:** TUNTEX Duraback  
**Foot Traffic:** Moderate  
**Treatment:** STAINSHIELD™  
 SOILGUARD™



## T700 BIRD'S-EYE ON METRO



T7001 Mist    T7002 Landmark    T7003 Urban Jungle    T7004 Corner



T7005 Night Shadow    T7006 Watertown    T7008 Forbidden City

T7006 Brick

**Face Yarn:** nexlon™ Premium Solution Dyed Nylon  
**Construction:** Multi Hi / Lo Loop  
**Pile Height:** 5.5 - 3.5 mm  
**Tile Size:** 500 mm x 500 mm  
**Standard Backing:** TUNTEX Duraback  
**Foot Traffic:** Heavy  
**Treatment:** STAINSHIELD™    SOILGUARD™  
 ECOFRESH™    MICROSHIELD™



T7071 Quarter-Turn

## T707 SPACE CLOUD



T7071 Saturn  
T7072 Tornado  
T7073 Jupiter

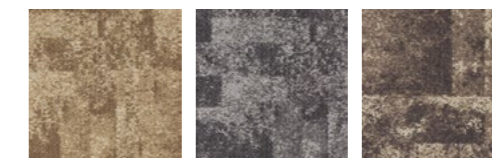


T7074 Lime Halo  
T7075 Mars  
T7077 Aurora

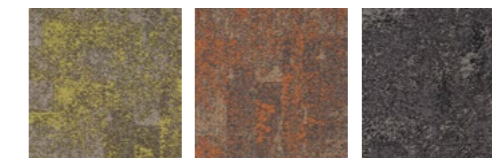


T7081 Ashlar

## T708 COLOR DEW



T7081 Chocolate  
T7082 Crystal  
T7083 Espresso



T7084 Green Apple  
T7085 Blaze Orange  
T7086 Smokey

**Face Yarn:** nexlon™ Premium Solution Dyed Nylon  
**Construction:** Multi Hi / Lo Loop  
**Pile Height:** 5.0 - 3.0 mm  
**Tile Size:** 500 mm x 500 mm  
**Standard Backing:** TUNTEX Duraback  
**Foot Traffic:** Heavy

**Treatment:** STAINSHIELD™ SOILGUARD™  
 ECOFRESH™ MICROSHIELD™

**Face Yarn:** nexlon™ Premium Solution Dyed Nylon featured with quartz  
**Construction:** Multi Hi / Lo Loop  
**Pile Height:** 5.0 - 3.0 mm  
**Tile Size:** 500 mm x 500 mm  
**Standard Backing:** TUNTEX Duraback  
**Foot Traffic:** Heavy

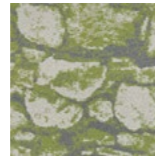
**Treatment:** STAINSHIELD™ SOILGUARD™  
 ECOFRESH™ MICROSHIELD™

# T709 FLAGSTONE

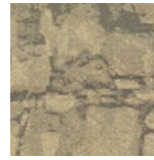
L



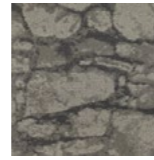
T709L01  
Limestone



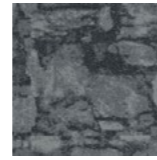
T709L02  
Moss



T709L03  
Plateau



T709L04  
Phlogopite

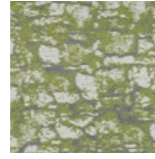


T709L05  
Gabbro

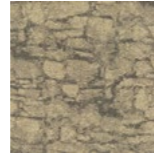
S



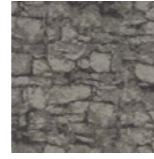
T709S01  
Limestone



T709S02  
Moss



T709S03  
Plateau



T709S04  
Phlogopite



T709S05  
Gabbro



**Face Yarn:** nexlon™ Premium Solution Dyed Nylon  
**Construction:** Multi Hi / Lo Loop  
**Pile Height:** 6.5 - 3.0 mm  
**Tile Size:** 500 mm x 500 mm  
**Standard Backing:** TUNTEX Duraback  
**Foot Traffic:** Heavy  
**Treatment:**

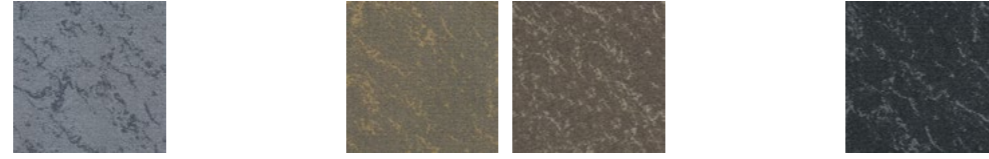
**STAINSHIELD™**  
**ECOFRESH™**

**SOILGUARD™**  
**MICROSHIELD™**



T709L04 / T709S04 Ashlar

## T710 BASE



T7101  
Luscious

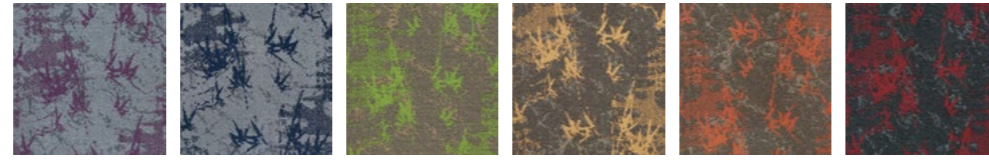
T7102  
Fragrance

T7103  
Cognac

T7104  
Flourish

## T711 BAMBOO

full pattern



T711X14  
Luscious

T711X16  
Petal

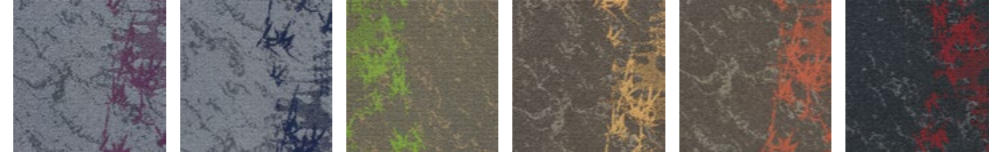
T711X21  
Green Fragrance

T711X32  
Cream Cognac

T711X33  
Orange Cognac

T711X45  
Flourish

half pattern



T711Y14  
Luscious

T711Y16  
Petal

T711Y21  
Green Fragrance

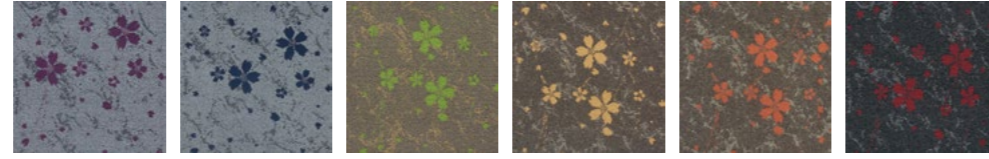
T711Y32  
Cream Cognac

T711Y33  
Orange Cognac

T711Y45  
Flourish

## T712 BLOSSOM

full pattern



T712X14  
Luscious

T712X16  
Petal

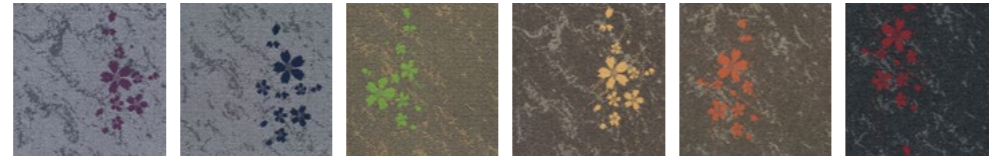
T712X21  
Green Fragrance

T712X32  
Cream Cognac

T712X33  
Orange Cognac

T712X45  
Flourish

half pattern



T712Y14  
Luscious

T712Y16  
Petal

T712Y21  
Green Fragrance

T712Y32  
Cream Cognac

T712Y33  
Orange Cognac

T712Y45  
Flourish

**Face Yarn:** nexlon™ Premium Solution Dyed Nylon  
**Construction:** Multi Hi / Lo Loop  
**Pile Height:** 6.0 - 4.0 mm  
**Tile Size:** 500 mm x 500 mm  
**Standard Backing:** TUNTEX Duraback  
**Foot Traffic:** Heavy  
**Treatment:**

**STAINSHIELD™**  
**ECOFRESH™**

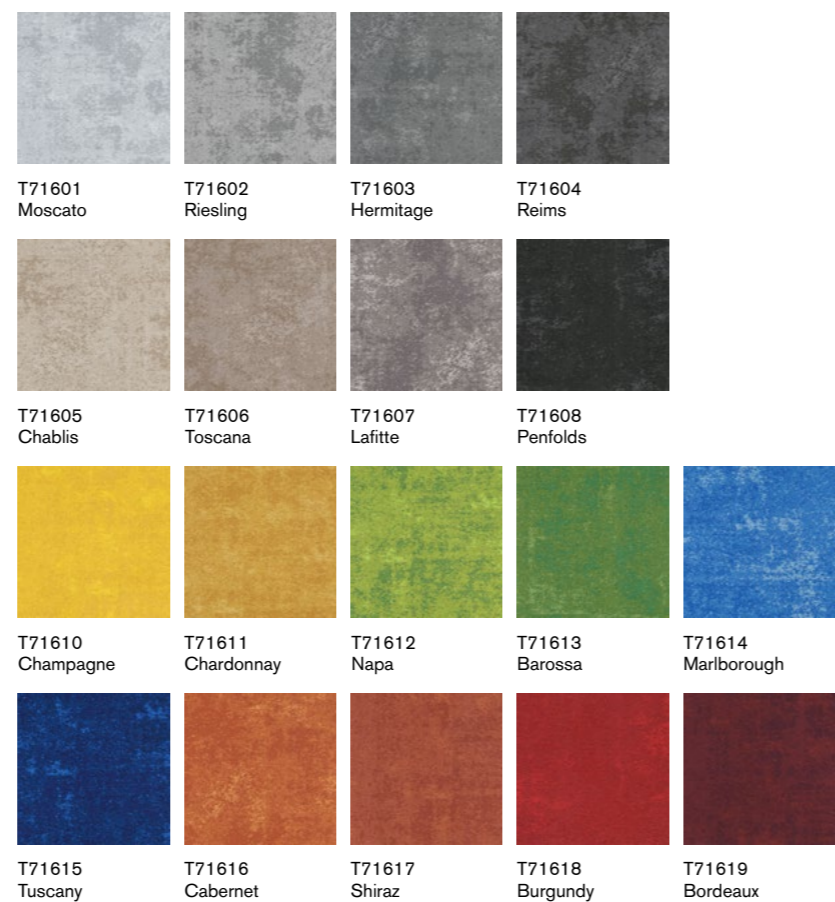
**SOILGUARD™**  
**MICROSHIELD™**



T7104 / T711X45 / T711Y45 Brick



## T716 VINTAGE



T71605 / T71606 / T71611 / T71612 Quarter-Turn

**Face Yarn:** Universal Fiber Solution Dyed Nylon  
**Construction:** Multi Hi / Lo Loop  
**Pile Height:** 6.0 - 3.5 mm  
**Tile Size:** 500 mm x 500 mm  
**Standard Backing:** TUNTEX Duraback  
**Foot Traffic:** Heavy  
**Treatment:** STAINSHIELD™ ECOFRESH™

SOILGUARD™  
MICROSHIELD™



## T717 SQ CLOUD



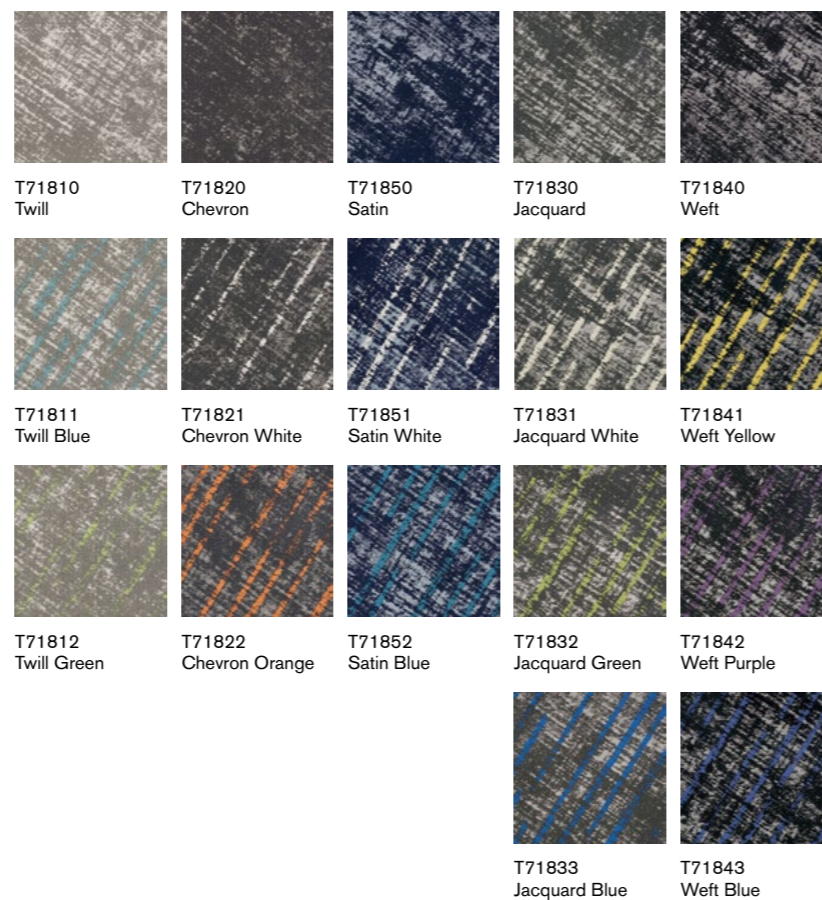
T71705 / T71706 Ashlar

**Face Yarn:** nexlon™ Premium Solution Dyed Nylon featured with quartz  
**Construction:** Multi Hi / Lo Loop  
**Pile Height:** 4.0 - 2.5 mm  
**Tile Size:** 500 mm x 500 mm  
**Standard Backing:** TUNTEX Duraback  
**Foot Traffic:** Heavy  
**Treatment:** STAINSHIELD™ ECOFRESH™

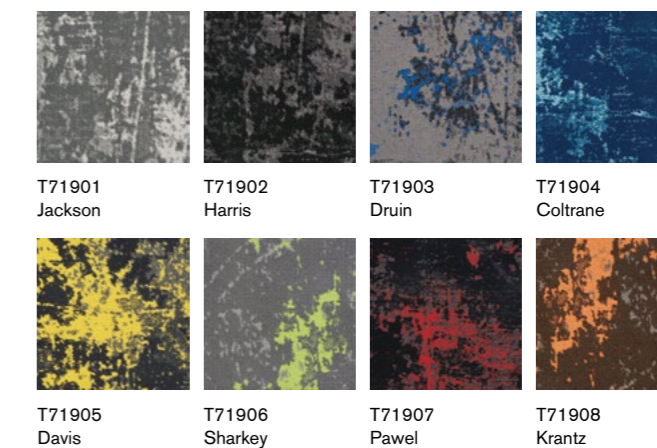
SOILGUARD™  
MICROSHIELD™



## T718 WEAVE PLUS



## T719 FREE FORM



**Face Yarn:** nexlon™ Premium Solution Dyed Nylon  
**Construction:** Multi Hi / Lo Loop  
**Pile Height:** 5.5 - 3.0 mm  
**Tile Size:** 500 mm x 500 mm  
**Standard Backing:** TUNTEX Duraback  
**Foot Traffic:** Heavy  
**Treatment:** STAINSHIELD™ ECOFRESH™

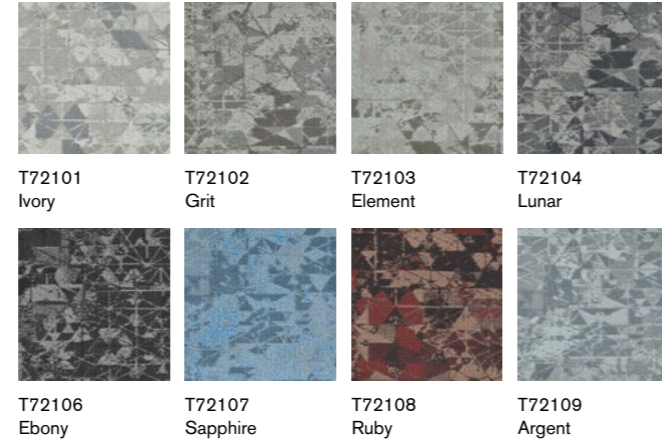
**SOILGUARD™**  
**MICROSHIELD™**

**Face Yarn:** nexlon™ Premium Solution Dyed Nylon  
**Construction:** Multi Hi / Lo Loop  
**Pile Height:** 5.5 - 3.5 mm  
**Tile Size:** 500 mm x 500 mm  
**Standard Backing:** TUNTEX Duraback  
**Foot Traffic:** Heavy  
**Treatment:** STAINSHIELD™ ECOFRESH™

**SOILGUARD™**  
**MICROSHIELD™**



## T721 CRYSTALLINE



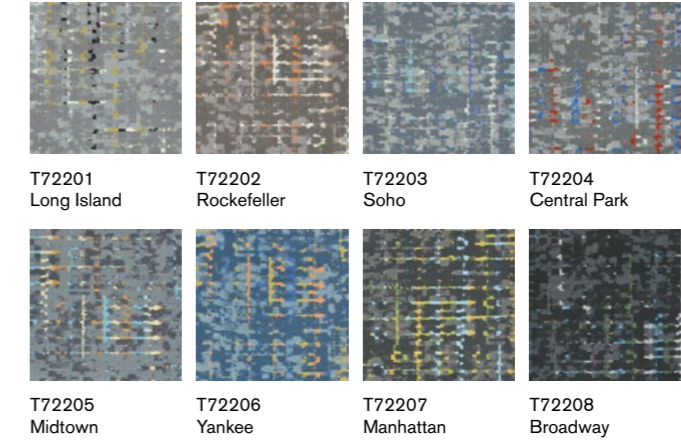
T72101 Ivory  
T72102 Grit  
T72103 Element  
T72104 Lunar  
T72106 Ebony  
T72107 Sapphire  
T72108 Ruby  
T72109 Argent

T72101 / T72102 Brick

**Face Yarn:** nexlon™ Premium Solution Dyed Nylon featured with quartz  
**Construction:** Multi Hi / Lo Loop  
**Pile Height:** 5.0 - 3.0 mm  
**Tile Size:** 500 mm x 500 mm  
**Standard Backing:** TUNTEX Duraback  
**Foot Traffic:** Heavy  
**Treatment:** STAINSHIELD™ SOILGUARD™  
 ECOFRESH™ MICROSHIELD™



## T722 TIMES SQUARE



T72201 Long Island  
T72202 Rockefeller  
T72203 Soho  
T72204 Central Park  
T72205 Midtown  
T72206 Yankee  
T72207 Manhattan  
T72208 Broadway

T72208 Quarter-Turn

**Face Yarn:** nexlon™ Premium Solution Dyed Nylon  
**Construction:** Multi Hi / Lo Loop  
**Pile Height:** 9.0 - 4.5 mm  
**Tile Size:** 500 mm x 500 mm  
**Standard Backing:** TUNTEX Duraback  
**Foot Traffic:** Heavy  
**Treatment:** STAINSHIELD™ SOILGUARD™  
 ECOFRESH™ MICROSHIELD™





T72301 / T72303 Quarter-Turn

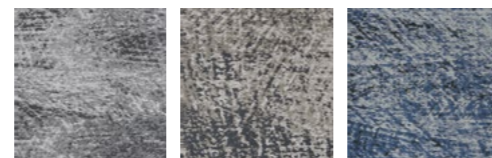
## T723 1933 SHANGHAI



T72301  
Reserve

T72302  
Rebirth

T72303  
Remain



T72304  
Revive

T72305  
Resurge

T72306  
Refresh



T72504 Ashlar

## T725 MOONWALK



T72501 Crescent Moon

T72504 Lunar Rover



T72502 Full Moon

T72505 Armstrong



T72503 Super Moon

T72506 Lunar Eclipse



T72507 Apollo



T72508 Blue Moon

**Face Yarn:** Universal Fiber Solution Dyed Nylon (including Bio-based Content)  
**Construction:** Multi Hi / Lo Loop  
**Pile Height:** 5.0 - 3.0 mm  
**Tile Size:** 500 mm x 500 mm  
**Standard Backing:** TUNTEX Duraback  
**Foot Traffic:** Heavy  
**Treatment:** STAINSHIELD™ ECOFRESH™ SOILGUARD™ MICROSHIELD™

**Face Yarn:** nexlon™ Premium Solution Dyed Nylon  
**Construction:** Multi Hi / Lo Loop with Tip-Shear Finish  
**Pile Height:** 8.0 - 5.0 mm  
**Tile Size:** 250 mm x 1000 mm  
**Standard Backing:** TUNTEX Duraback  
**Foot Traffic:** Moderate  
**Treatment:** STAINSHIELD™ ECOFRESH™ SOILGUARD™ MICROSHIELD™



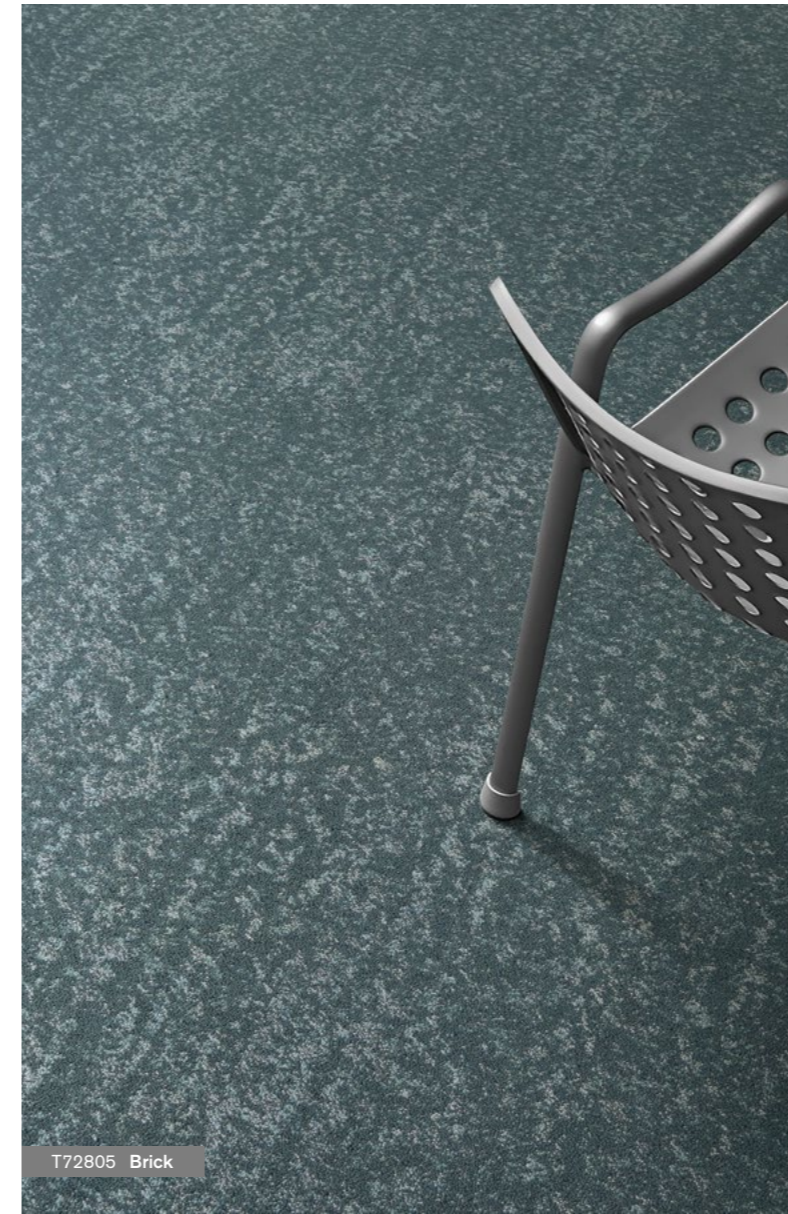
## T726 FOREST VIEW



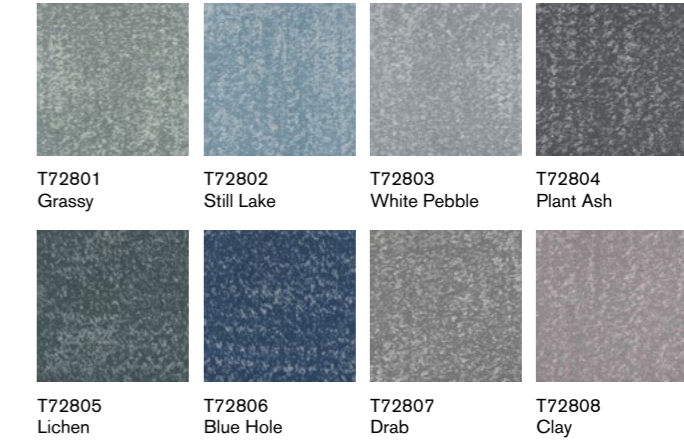
T72604 Brick



**Face Yarn:** nexlon™ Premium Solution Dyed Nylon featured with aircell  
**Construction:** Multi Hi / Lo Loop  
**Pile Height:** 9.0 - 5.0 mm  
**Tile Size:** 500 mm x 500 mm  
**Standard Backing:** TUNTEX Duraback  
**Foot Traffic:** Heavy  
**Treatment:** **STAINSHIELD™** **SOILGUARD™**  
**ECO FRESH™** **MICROSHIELD™**



## T728 PETRICHOR



T72805 Brick



**Face Yarn:** nexlon™ Premium Solution Dyed Nylon featured with aircell  
**Construction:** Multi Hi / Lo Loop  
**Pile Height:** 6.5 - 3.0 mm  
**Tile Size:** 500 mm x 500 mm  
**Standard Backing:** TUNTEX Duraback  
**Foot Traffic:** Heavy  
**Treatment:** **STAINSHIELD™** **SOILGUARD™**  
**ECO FRESH™** **MICROSHIELD™**



V261-1 / T72606 Ashlar

## V261 MARBLE



V261-1  
Travertine

V261-3  
Mica

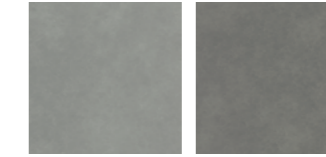
V261-4  
Flint

<b>Product Construction:</b>	Solid PVC Luxury Vinyl Tile
<b>Overall Thickness:</b>	5 mm
<b>Size Available:</b>	500 mm W x 1000 mm L
<b>Wear Layer Thickness/Type:</b>	0.55 mm Solid PVC - Exceeds ASTM F 1700
<b>Anti-Slip Layer:</b>	Allows Installation Without Glue (Moderate Traffic)
<b>Edge Design:</b>	Microbever
<b>Water Resistance:</b>	Waterproof
<b>UV-Cured Polyurethane CoatingUV:</b>	X-SHIELD™ Polyurethane Coating
<b>Increased Dimensional Stability:</b>	Fiberglass
<b>Installation Method:</b>	Loose Lay/Perimeter Adhesion
<b>Recommended Adhesive:</b>	TX-500



V263-1 Monolithic / T71602 Brick

## V263 PORCELAIN



V263 -1  
Magnasite

V263 -2  
Limestone

<b>Product Construction:</b>	Solid PVC Luxury Vinyl Tile
<b>Overall Thickness:</b>	5 mm
<b>Size Available:</b>	500 mm W x 500 mm L
<b>Wear Layer Thickness/Type:</b>	0.55 mm Solid PVC - Exceeds ASTM F 1700
<b>Anti-Slip Layer:</b>	Allows Installation Without Glue (Moderate Traffic)
<b>Edge Design:</b>	Microbever
<b>Water Resistance:</b>	Waterproof
<b>UV-Cured Polyurethane CoatingUV:</b>	X-SHIELD™ Polyurethane Coating
<b>Increased Dimensional Stability:</b>	Fiberglass
<b>Installation Method:</b>	Loose Lay/Perimeter Adhesion
<b>Recommended Adhesive:</b>	TX-500

## V270 FORMATIONS



V271-1  
Birch

V272-2  
Ash

V273-2  
Blackwood

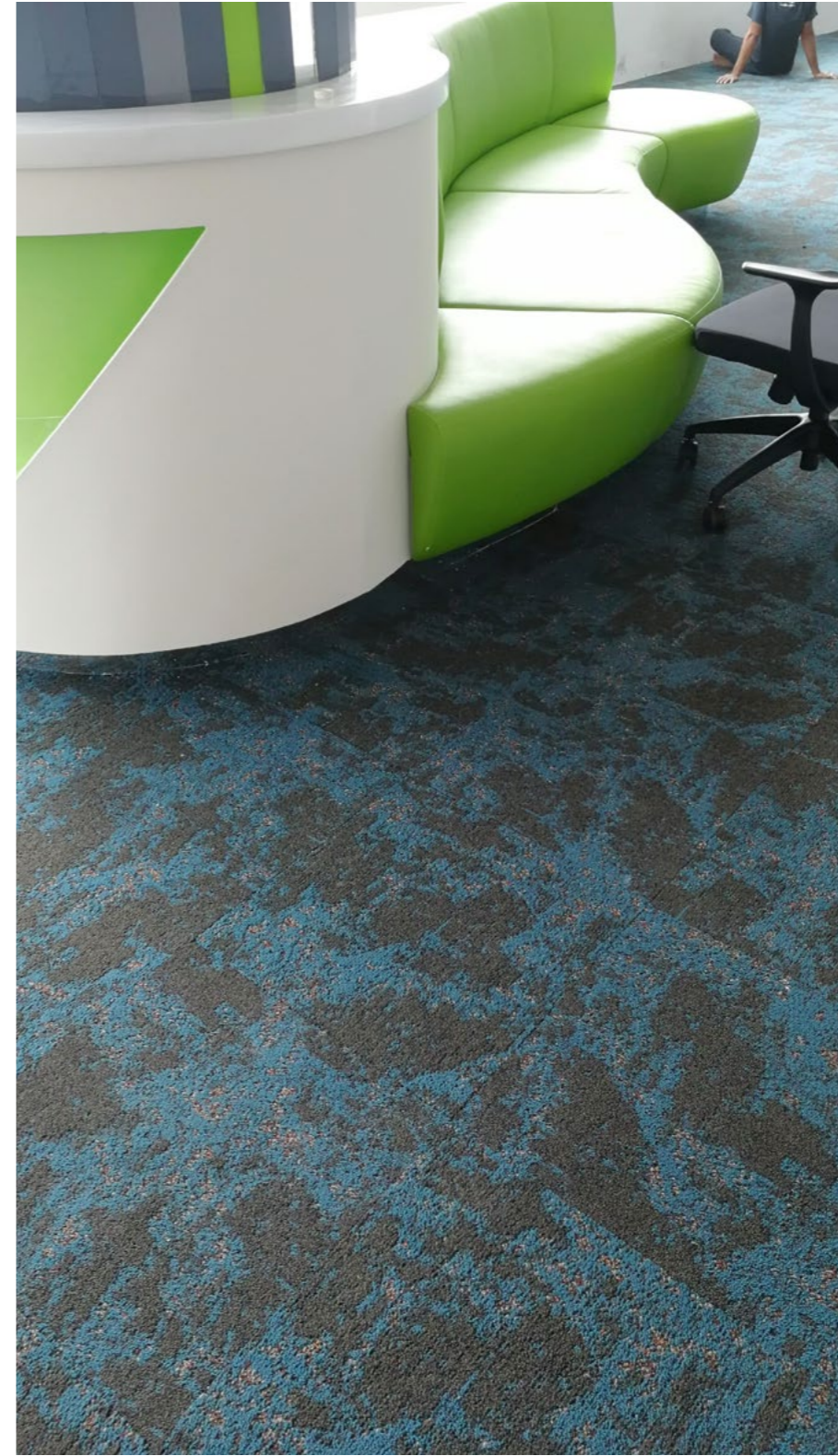


<b>Product Construction:</b>	Solid PVC Luxury Vinyl Tile
<b>Overall Thickness:</b>	5 mm
<b>Size Available:</b>	250 mm W x 1000 mm L
<b>Wear Layer Thickness/Type:</b>	0.55 mm Solid PVC - Exceeds ASTM F 1700
<b>Anti-Slip Layer:</b>	Allows Installation Without Glue (Moderate Traffic)
<b>Edge Design:</b>	Microbever
<b>Water Resistance:</b>	Waterproof
<b>UV-Cured Polyurethane CoatingUV:</b>	X-SHIELD™ Polyurethane Coating
<b>Increased Dimensional Stability:</b>	Fiberglass
<b>Installation Method:</b>	Loose Lay/Perimeter Adhesion
<b>Recommended Adhesive:</b>	TX-500



V273-2 / T60102 Ashlar

# SHOWCASES



# 02

# PREMIUM LINE

Variety of innovative styles and combinations, the best response to contemporary space



Mineral	T101	63	Boardwalk	T800	89
Linen	T102	64	Color Zip	T801	90
Milano	T103	65	City Map	T803	91
Pulse	T105	66	Mist	T805	92
Light Chaser	T106	67	Track 25	T806	93
ReGenerate	T108	68	Sunshower	T807	94
Circuit	T613	69	Tassels	T808	95
Criss-cross	T617	70	Color Stroke	T809	96
Spectrum	T629	71	Abstract	T810	97
Sonic	T637	72	Cube	T811	98
Pick Up Sticks	T657	73	Expression	T812	99
Classic Track	T660	75	Nouvel	T813	100
Track Line	T661	75	Night Falls	T815	101
Bayou	T662	77	Immerse	T816	102
Skate	T663	78	Sandscape	T819	103
Granite	T665	79	Paper Mache	T850	104
Shadow	T670	80	Tetrix	T851	105
In-motion	T671	81	Ripple	T852	106
Banyan	T672	82	Reflection	T855	107
Time	T673	83	Tree Walk	T857	108
Glacier	T675	84	Bumblebees	T861	109
Natural Charm	T676	85	Magnetite	T863	110
Lake Hues	T677	86	Ice Shards	T871	111
Track Connection	T690	75	Tide	T873	112
Woodland	T692	87	Denim	T895	113
			Snowflakes	T896	114

# MODERN AND DIVERSE CHOICES FOR FLOORING DESIGNS

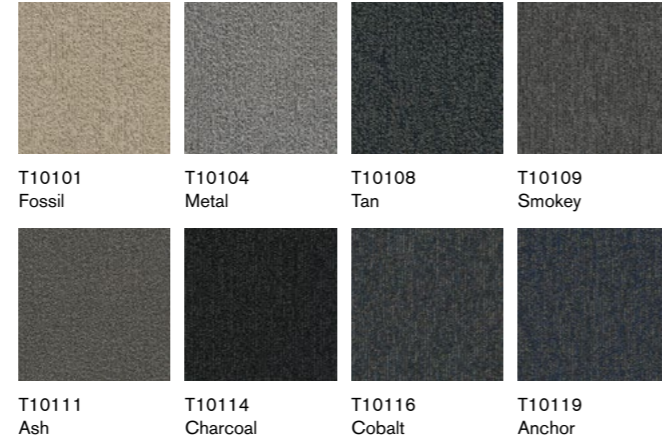
Grace, simplicity, and diversity are our comprehension of modern space. Tuntex Premium is a collection of high-taste and high-quality modular carpets and plank carpets. Mix of different textures, colors, and patterns creates a space with both creativity and style.





## T101 MINERAL

Images below are enlarged and represent a section of a full tile only



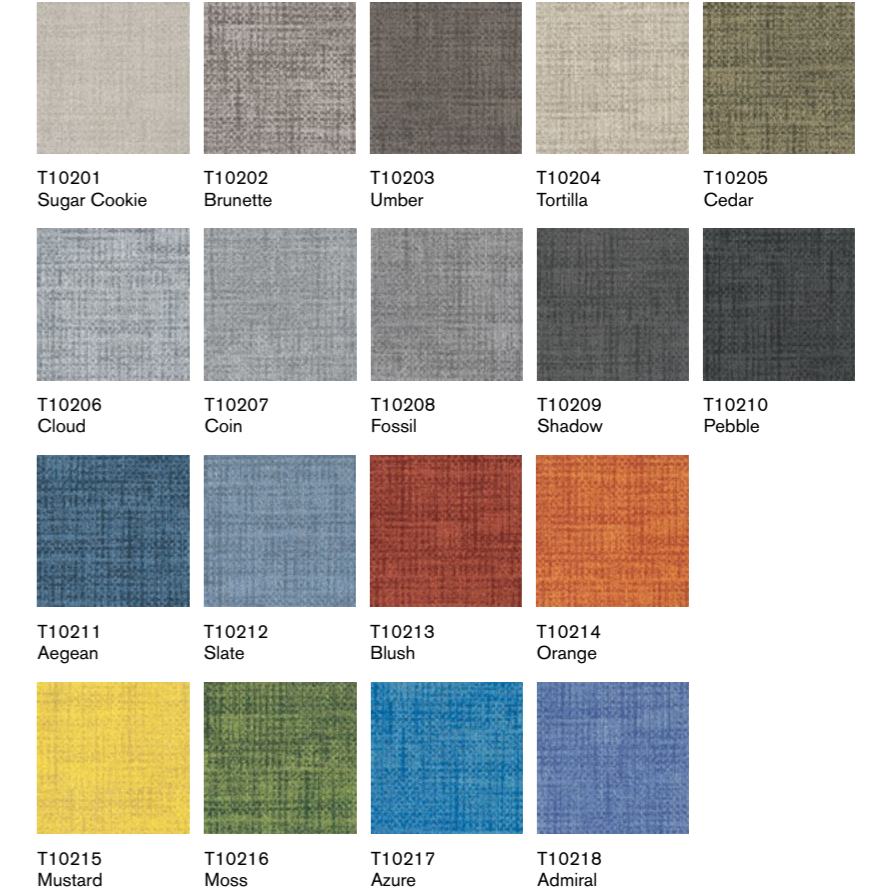
T10109 Quarter-Turn

**Face Yarn:** nexlon™ Premium Solution Dyed Nylon featured with quartz  
**Construction:** Loop  
**Pile Height:** 4.0 mm  
**Tile Size:** 500 mm x 500 mm  
**Standard Backing:** TUNTEX Duraback  
**Foot Traffic:** Heavy  
**Treatment:** STAINSHIELD™ SOILGUARD™



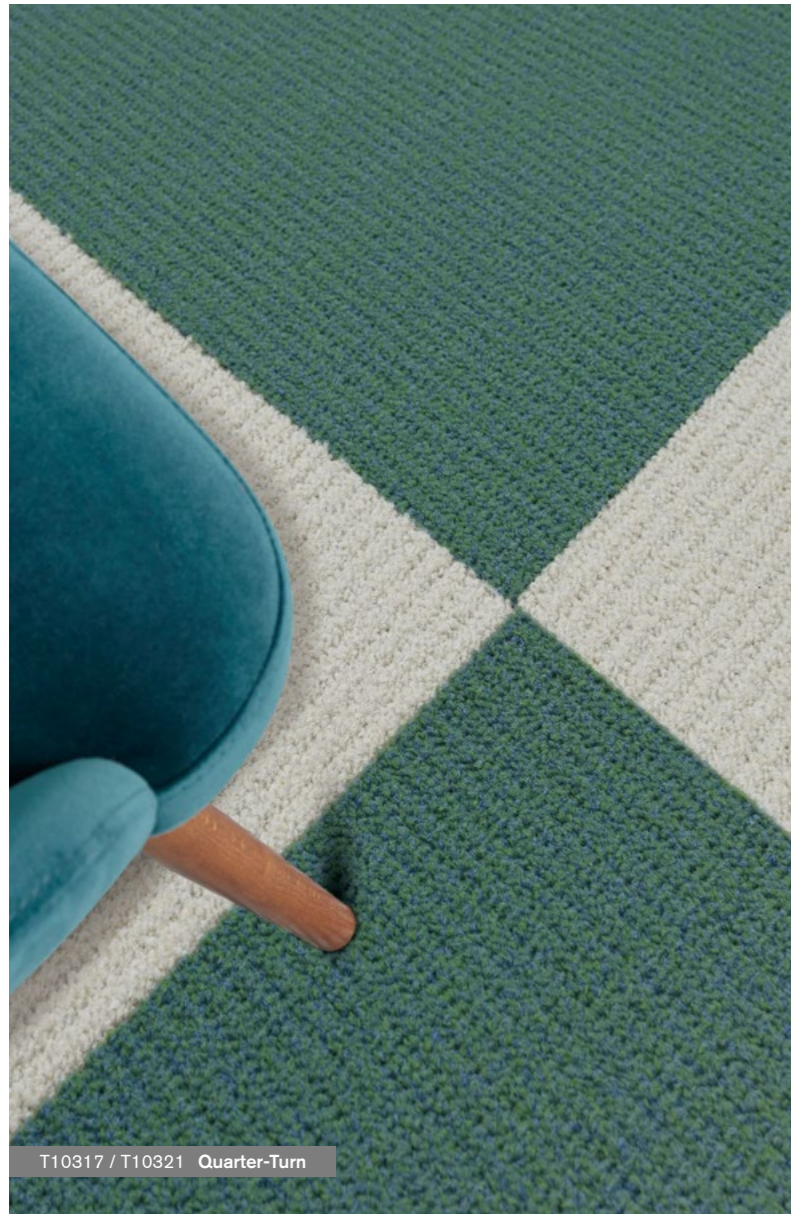
T10201 / T10202 / T10203 / T10207 / T10208 Brick

## T102 LINEN



**Face Yarn:** nexlon™ Premium Solution Dyed Nylon featured with quartz  
**Construction:** Hi / Mid / Lo Loop  
**Pile Height:** 5.5 / 4.5 / 3.0 mm  
**Tile Size:** 500 mm x 500 mm  
**Standard Backing:** TUNTEX Duraback  
**Foot Traffic:** Heavy  
**Treatment:** STAINSHIELD™ SOILGUARD™





T10317 / T10321 Quarter-Turn

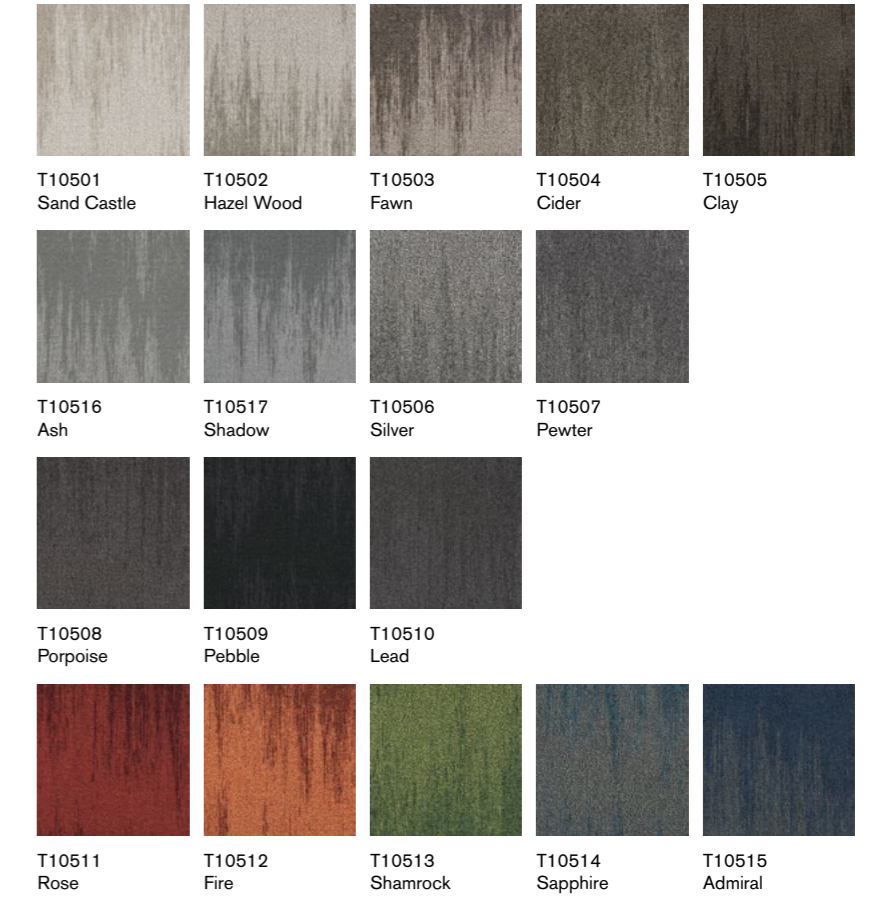
## T103 MILANO

Images below are enlarged and represent a section of a full tile only



T10516 Quarter-Turn

## T105 PULSE



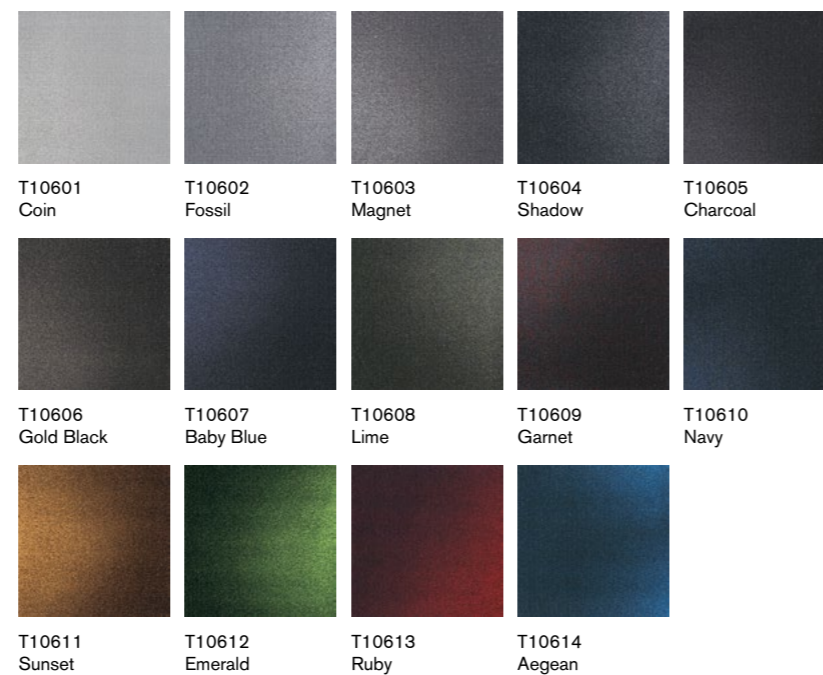
**Face Yarn:** nexlon™ Premium Solution Dyed Nylon featured with aircell  
**Construction:** Multi Hi / Lo Loop  
**Pile Height:** 6.0 - 3.5 mm  
**Tile Size:** 500 mm x 500 mm  
**Standard Backing:** TUNTEX Duraback  
**Foot Traffic:** Heavy  
**Treatment:** STAINSHIELD™ SOILGUARD™

**Face Yarn:** nexlon™ Premium Solution Dyed Nylon  
**Construction:** Multi Hi / Lo Loop  
**Pile Height:** 4.5 - 3.5 mm  
**Tile Size:** 500 mm x 500 mm  
**Standard Backing:** TUNTEX Duraback  
**Foot Traffic:** Heavy  
**Treatment:** STAINSHIELD™ SOILGUARD™



T10602 / T10604 Ashlar

## T106 LIGHT CHASER



T10807 / T10823 / T10825 / T10837 Brick

## T108 REGENERATE

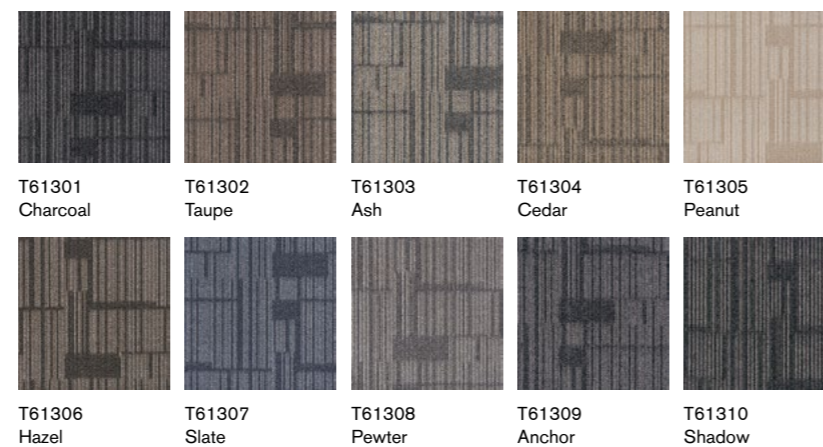


**Face Yarn:** nexlon™ Premium Solution Dyed Nylon featured with quartz  
**Construction:** Multi Hi / Lo Loop  
**Pile Height:** 5.5 - 3.0 mm  
**Tile Size:** 500 mm x 500 mm  
**Standard Backing:** TUNTEX Duraback  
**Foot Traffic:** Heavy  
**Treatment:** STAINSHIELD™ SOILGUARD™

**Face Yarn:** nexlon™ Premium Solution Dyed Nylon  
**Construction:** Hi / Mid / Lo Loop  
**Pile Height:** 5.0 / 4.5 / 3.0 mm  
**Tile Size:** 500 mm x 500 mm  
**Standard Backing:** TUNTEX Duraback  
**Foot Traffic:** Heavy  
**Treatment:** STAINSHIELD™ SOILGUARD™



## T613 CIRCUIT



## T617 CRISS-CROSS



**Face Yarn:** nexlon™ Premium Solution Dyed Nylon  
**Construction:** Hi / Mid / Lo Loop  
**Pile Height:** 5.0 / 4.5 / 3.5 mm  
**Tile Size:** 500 mm x 500 mm  
**Standard Backing:** TUNTEX Duraback  
**Foot Traffic:** Heavy  
**Treatment:** STAINSHIELD™  
 SOILGUARD™

**Face Yarn:** nexlon™ Premium Solution Dyed Nylon  
**Construction:** Hi / Mid / Lo Loop  
**Pile Height:** 6.0 / 4.5 / 3.0 mm  
**Tile Size:** 500 mm x 500 mm  
**Standard Backing:** TUNTEX Duraback  
**Foot Traffic:** Heavy  
**Treatment:** STAINSHIELD™  
 SOILGUARD™



T62905 / T62906 Brick

## T629 SPECTRUM



T63704 / T63714 Ashlar

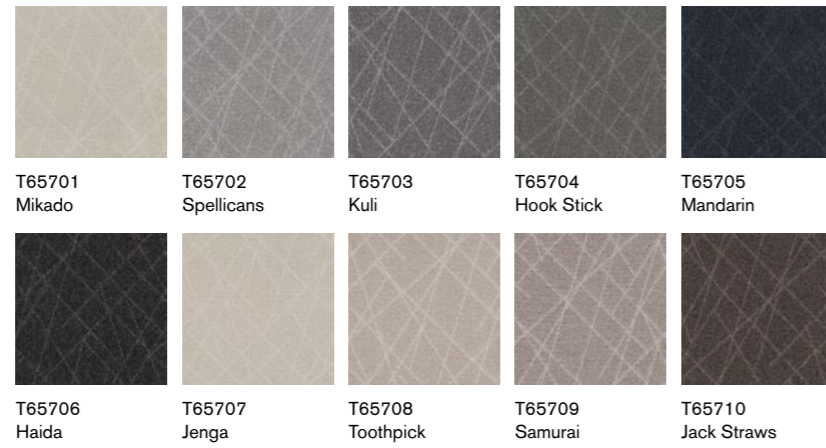
## T637 SONIC



**Face Yarn:** nexlon™ Premium Solution Dyed Nylon  
**Construction:** Hi / Mid / Lo Loop  
**Pile Height:** 5.0 / 4.0 / 3.0 mm  
**Tile Size:** 500 mm x 500 mm  
**Standard Backing:** TUNTEX Duraback  
**Foot Traffic:** Heavy  
**Treatment:** STAINSHIELD™  
 SOILGUARD™

**Face Yarn:** nexlon™ Premium Solution Dyed Nylon  
**Construction:** Multi Hi / Lo Loop  
**Pile Height:** 4.5 - 3.0 mm  
**Tile Size:** 500 mm x 500 mm  
**Standard Backing:** TUNTEX Duraback  
**Foot Traffic:** Heavy  
**Treatment:** STAINSHIELD™  
 SOILGUARD™

## T657 PICK UP STICKS

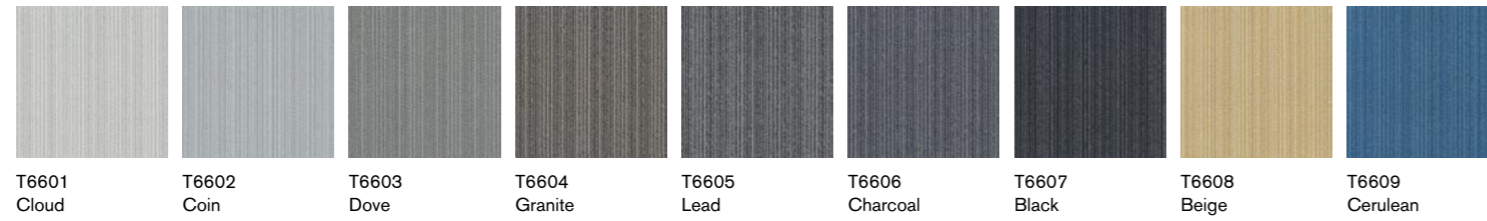


<b>Face Yarn:</b>	nexlon™ Premium Solution Dyed Nylon featured with quartz
<b>Construction:</b>	Hi / Mid / Lo Loop
<b>Pile Height:</b>	5.0 / 4.5 / 3.0 mm
<b>Tile Size:</b>	500 mm x 500 mm
<b>Standard Backing:</b>	TUNTEX Duraback
<b>Foot Traffic:</b>	Heavy
<b>Treatment:</b>	<b>STAINSHIELD™</b> <b>SOILGUARD™</b>

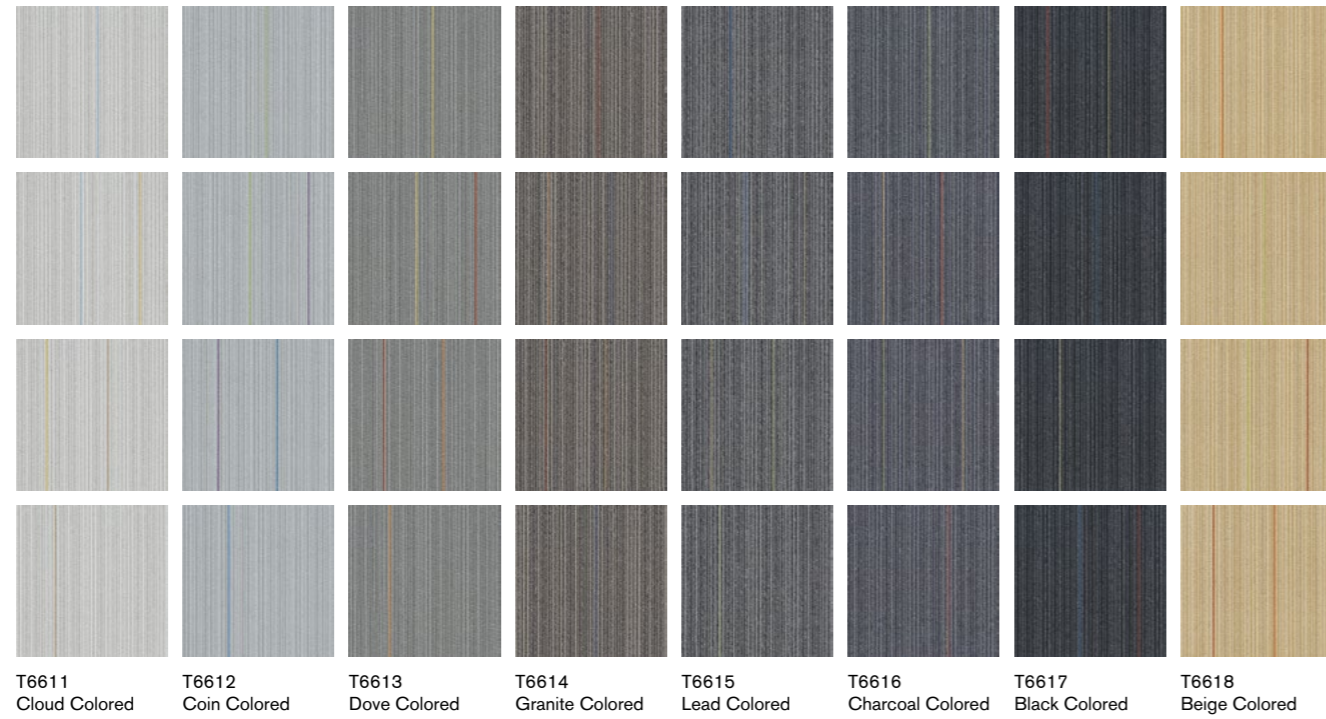


T65702 / T65706 Quarter-Turn

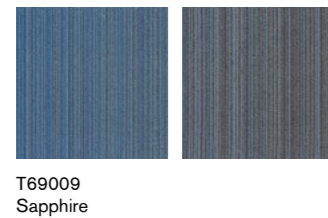
## T660 CLASSIC TRACK



## T661 TRACK LINE



## T690 TRACK CONNE- CTION



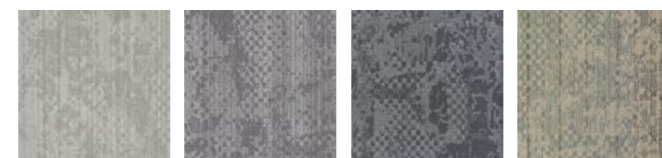
**Face Yarn:** nexlon™ Premium Solution Dyed Nylon  
**Construction:** Hi / Lo Loop  
**Pile Height:** 4.0 / 3.5 mm  
**Tile Size:** 500 mm x 500 mm  
**Standard Backing:** TUNTEX Duraback  
**Foot Traffic:** Heavy  
**Treatment:** STAINSHIELD™  
 SOILGUARD™



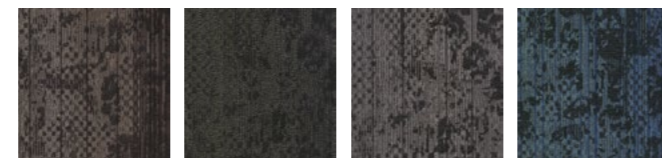
T6607 / T6617 Brick



## T662 BAYOU



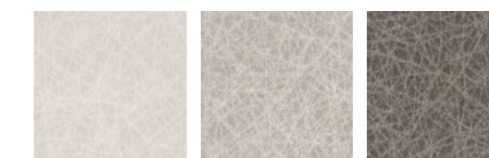
T66201 Louisiana  
T66202 Mississippi  
T66203 Texas  
T66204 Cajun



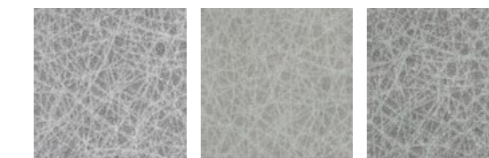
T66205 Creole  
T66206 Everglade  
T66207 Wetlands  
T66208 Crawfish



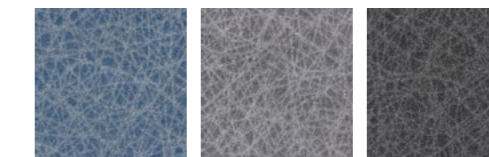
## T663 SKATE



T66301 Sand Dollar  
T66302 Tan  
T66303 Coffee



T66304 Cloud  
T66305 Beige  
T66306 Oat



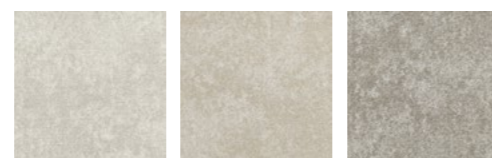
T66307 Aegean  
T66308 Grey  
T66309 Pebble

**Face Yarn:** nexlon™ Premium Solution Dyed Nylon featured with quartz  
**Construction:** Hi / Mid / Lo Loop  
**Pile Height:** 5.5 / 4.5 / 3.0 mm  
**Tile Size:** 500 mm x 500 mm  
**Standard Backing:** TUNTEX Duraback  
**Foot Traffic:** Heavy  
**Treatment:** STAINSHIELD™ SOILGUARD™

**Face Yarn:** nexlon™ Premium Solution Dyed Nylon  
**Construction:** Hi / Mid / Lo Loop  
**Pile Height:** 4.5 / 4.0 / 3.0 mm  
**Tile Size:** 500 mm x 500 mm  
**Standard Backing:** TUNTEX Duraback  
**Foot Traffic:** Heavy  
**Treatment:** STAINSHIELD™ SOILGUARD™



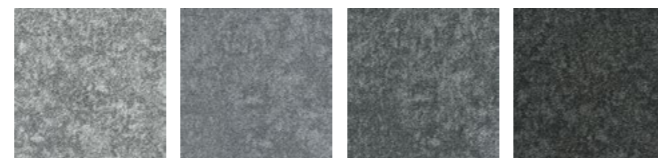
## T665 GRANITE



T66501  
Greige

T66502  
Sand

T66503  
Taupe



T66504  
Coin

T66505  
Fossil

T66506  
Shadow

T66507  
Charcoal



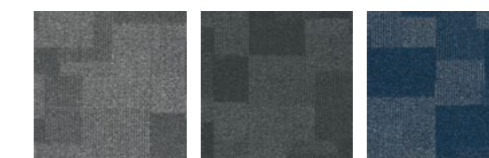
T66508  
Walnut

T66509  
Denim

T66510  
Wine



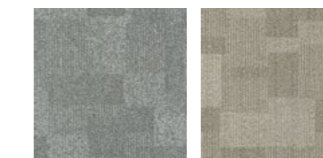
## T670 SHADOW



T67002  
Coin

T67003  
Fossil

T67010  
Sapphire



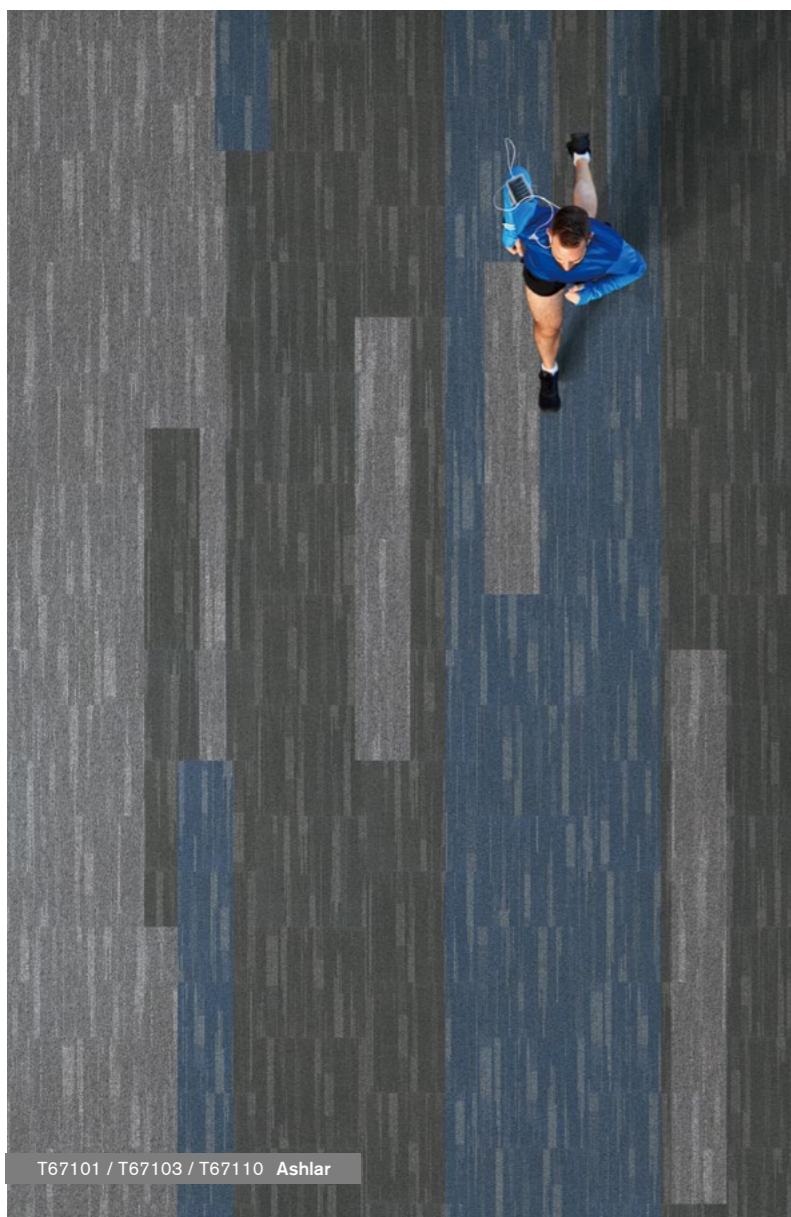
T67011  
Silver

T67012  
Oat

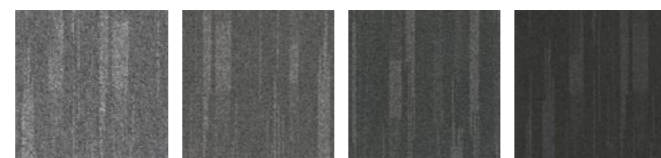
**Face Yarn:** nexlon™ Premium Solution Dyed Nylon  
**Construction:** Multi Hi / Lo Loop  
**Pile Height:** 5.5 - 3.0 mm  
**Tile Size:** 500 mm x 500 mm  
**Standard Backing:** TUNTEX Duraback  
**Foot Traffic:** Heavy  
**Treatment:** STAINSHIELD™  
 SOILGUARD™

**Face Yarn:** nexlon™ Premium Solution Dyed Nylon  
**Construction:** Hi / Mid / Lo Loop  
**Pile Height:** 5.5 / 4.5 / 3.5 mm  
**Tile Size:** 500 mm x 500 mm  
**Standard Backing:** TUNTEX Duraback  
**Foot Traffic:** Heavy  
**Treatment:** STAINSHIELD™  
 SOILGUARD™

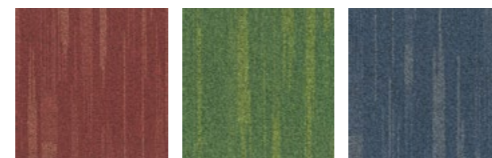




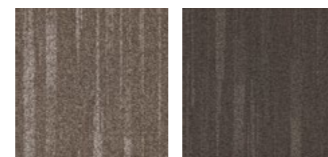
## T671 IN-MOTION



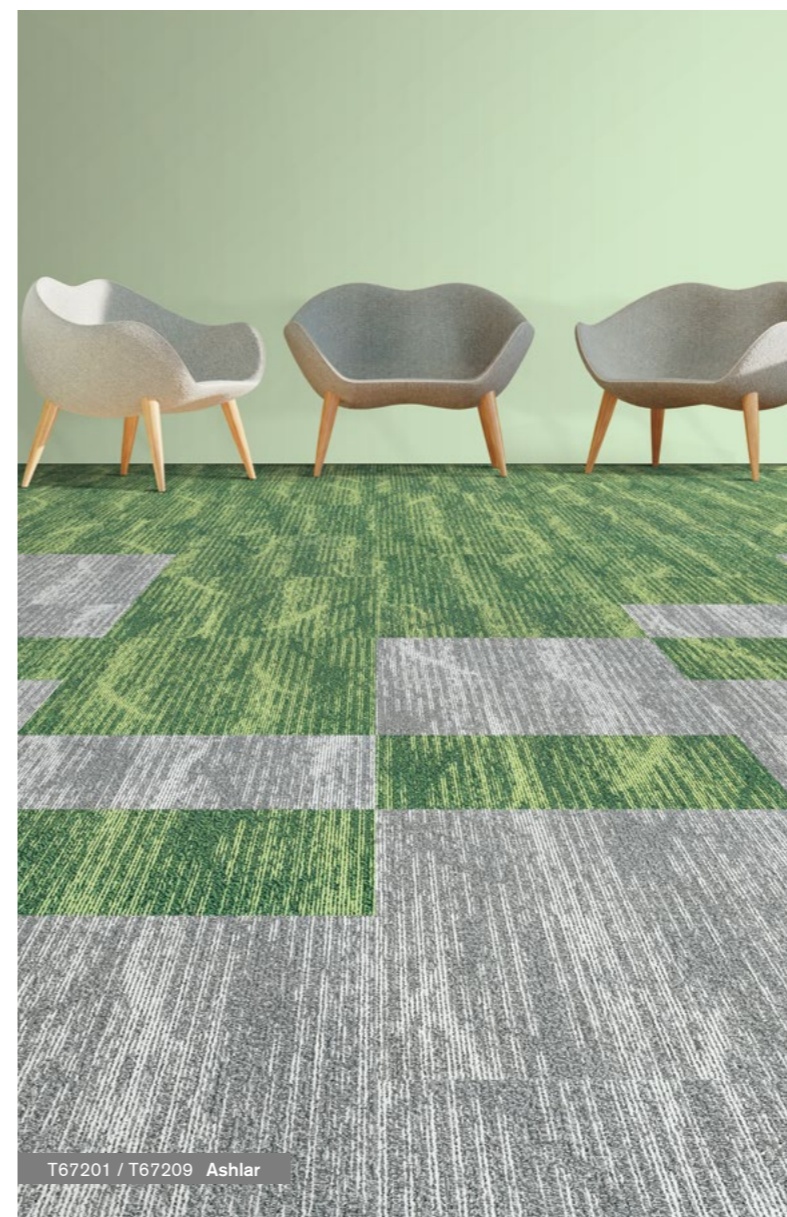
T67101 Cloud  
T67102 Coin  
T67103 Fossil  
T67104 Charcoal



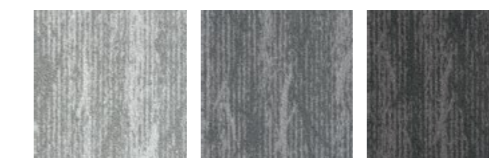
T67108 Fire  
T67109 Shamrock  
T67110 Sapphire



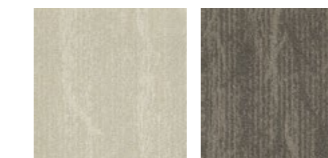
T67111 Tortilla  
T67112 Wood



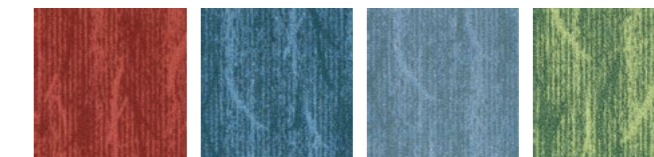
## T672 BANYAN



T67201 Cloud  
T67202 Fossil  
T67203 Pebble



T67204 Beige  
T67205 Carob



T67206 Rose  
T67207 Aegean  
T67208 Stone  
T67209 Olive

**Face Yarn:** nexlon™ Premium Solution Dyed Nylon  
**Construction:** Hi / Mid / Lo Loop  
**Pile Height:** 5.5 / 4.5 / 3.5 mm  
**Tile Size:** 500 mm x 500 mm  
**Standard Backing:** TUNTEX Duraback  
**Foot Traffic:** Heavy  
**Treatment:** STAINSHIELD™  
 SOILGUARD™

**Face Yarn:** nexlon™ Premium Solution Dyed Nylon featured with quartz  
**Construction:** Hi / Mid / Lo Loop  
**Pile Height:** 5.0 / 4.0 / 3.0 mm  
**Tile Size:** 500 mm x 500 mm  
**Standard Backing:** TUNTEX Duraback  
**Foot Traffic:** Heavy  
**Treatment:** STAINSHIELD™  
 SOILGUARD™

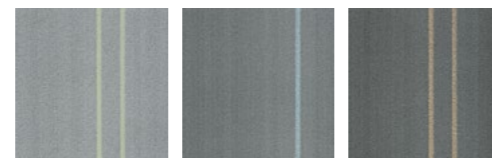


T67311 / T67320 Quarter-Turn

## T673 TIME



T67310 Cloud  
T67320 Fossil  
T67330 Iron



T67311 Cloud Green  
T67321 Fossil Blue  
T67331 Iron Yellow



T67513 / T67514 Brick

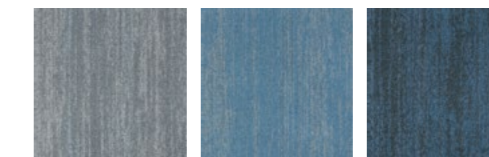
## T675 GLACIER



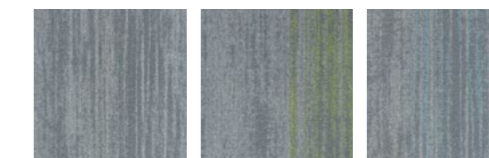
T67501 Oat  
T67502 Hazel Wood  
T67503 Hazelnut  
T67504 Ash



T67505 Grey  
T67506 Fossil  
T67507 Lead  
T67508 Shadow



T67509 Slate  
T67510 Stone  
T67511 Denim



T67512 Cloud  
T67513 Pear  
T67514 Sky



**Face Yarn:** nexlon™ Premium Solution Dyed Nylon featured with aircell  
**Construction:** Multi Hi / Lo Loop  
**Pile Height:** 6.0 - 4.0 mm  
**Tile Size:** 500 mm x 500 mm  
**Standard Backing:** TUNTEX Duraback  
**Foot Traffic:** Heavy  
**Treatment:** STAINSHIELD™ SOILGUARD™



**Face Yarn:** nexlon™ Premium Solution Dyed Nylon featured with aircell and quartz  
**Construction:** Hi / Mid / Lo Loop  
**Pile Height:** 6.0 / 5.0 / 3.5 mm  
**Tile Size:** 500 mm x 500 mm  
**Standard Backing:** TUNTEX Duraback  
**Foot Traffic:** Heavy  
**Treatment:** STAINSHIELD™ SOILGUARD™



T67601 / T67606 / T67612 Brick

## T676 NATURAL CHARM

T67601 Cloud	T67604 Stone	T67607 Sage	T67610 Flaxen	T67613 Dove
T67602 Fossil	T67605 Aegean	T67608 Olive	T67611 Apricot	T67614 Blush
T67603 Pebble	T67606 Spruce	T67609 Moss	T67612 Brick	T67615 Denim



T67701 / T67704 Brick

## T677 LAKE HUES

T67701 Pistachio	T67702 Sage	T67703 Olive	T67704 Fossil	T67705 Iron
T67706 Hazel Wood	T67707 Sand Dollar	T67708 Crepe	T67709 Dove	T67710 Cider

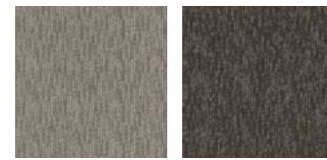


<b>Face Yarn:</b>	nexlon™ Premium Solution Dyed Nylon featured with aircell
<b>Construction:</b>	Hi / Mid / Lo Loop
<b>Pile Height:</b>	6.0 / 5.0 / 4.0 mm
<b>Tile Size:</b>	500 mm x 500 mm
<b>Standard Backing:</b>	TUNTEX Duraback
<b>Foot Traffic:</b>	Heavy
<b>Treatment:</b>	<b>STAIN</b> SHIELD™ <b>SOIL</b> GUARD™



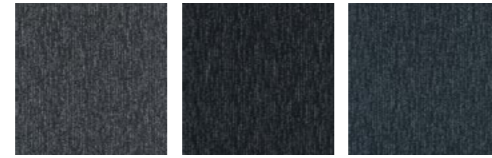
<b>Face Yarn:</b>	nexlon™ Premium Solution Dyed Nylon featured with aircell
<b>Construction:</b>	Multi Hi / Lo Loop
<b>Pile Height:</b>	5.2 - 3.0 mm
<b>Tile Size:</b>	500 mm x 500 mm
<b>Standard Backing:</b>	TUNTEX Duraback
<b>Foot Traffic:</b>	Heavy
<b>Treatment:</b>	<b>STAIN</b> SHIELD™ <b>SOIL</b> GUARD™

# T692 WOODLAND



T69201  
Hazel Wood

T69202  
Wood



T69203  
Anchor

T69204  
Shadow

T69205  
Spruce



**Face Yarn:** nexlon™ Premium Solution Dyed Nylon  
**Construction:** Hi / Mid / Lo Loop  
**Pile Height:** 5.0 / 4.5 / 3.0 mm  
**Tile Size:** 500 mm x 500 mm  
**Standard Backing:** TUNTEX Duraback  
**Foot Traffic:** Heavy  
**Treatment:** STAINSHIELD™  
 SOILGUARD™



T69201 / T69202 Brick



## T800 BOARDWALK



## T801 COLOR ZIP

Images below are enlarged and represent a section of a full tile only

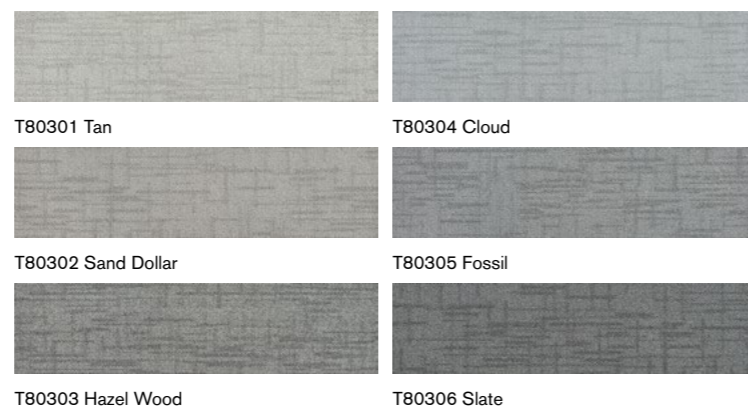


**Face Yarn:** nexlon™ Premium Solution Dyed Nylon  
**Construction:** Hi / Mid / Lo Loop  
**Pile Height:** 6.0 / 4.0 / 3.0 mm  
**Tile Size:** 250 mm x 1000 mm  
**Standard Backing:** TUNTEX Duraback  
**Foot Traffic:** Heavy  
**Treatment:** STAINSHIELD™  
 SOILGUARD™

**Face Yarn:** nexlon™ Premium Solution Dyed Nylon  
**Construction:** Multi Hi / Lo Loop  
**Pile Height:** 6.0 - 3.0 mm  
**Tile Size:** 250 mm x 1000 mm  
**Standard Backing:** TUNTEX Duraback  
**Foot Traffic:** Heavy  
**Treatment:** STAINSHIELD™  
 SOILGUARD™



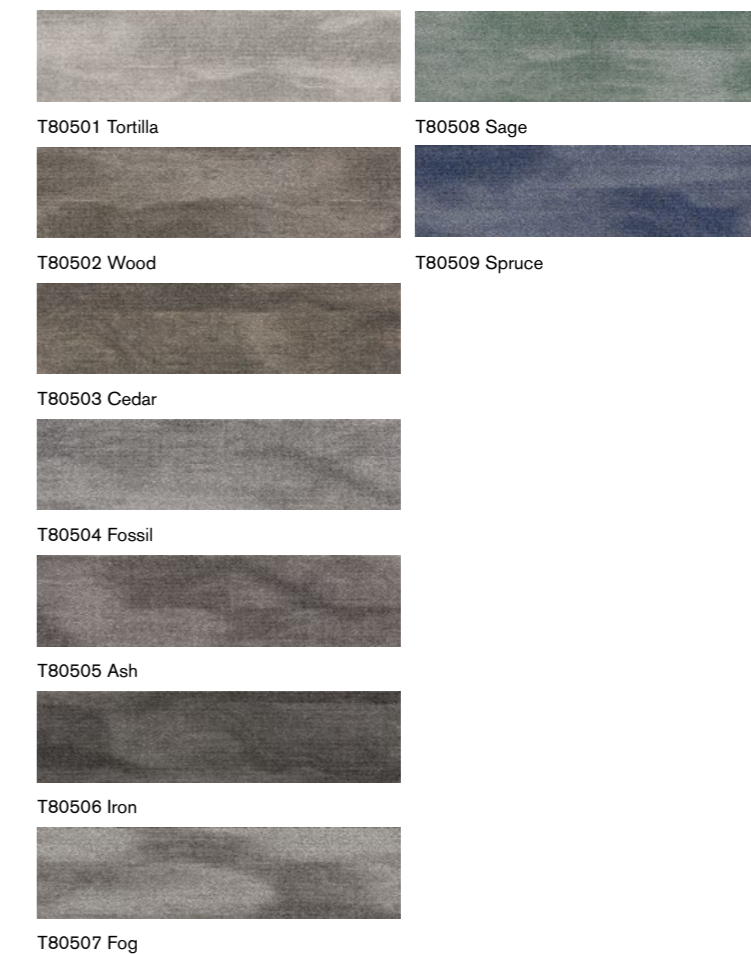
## T803 CITY MAP



T80302 / T80303 Ashlar



## T805 MIST

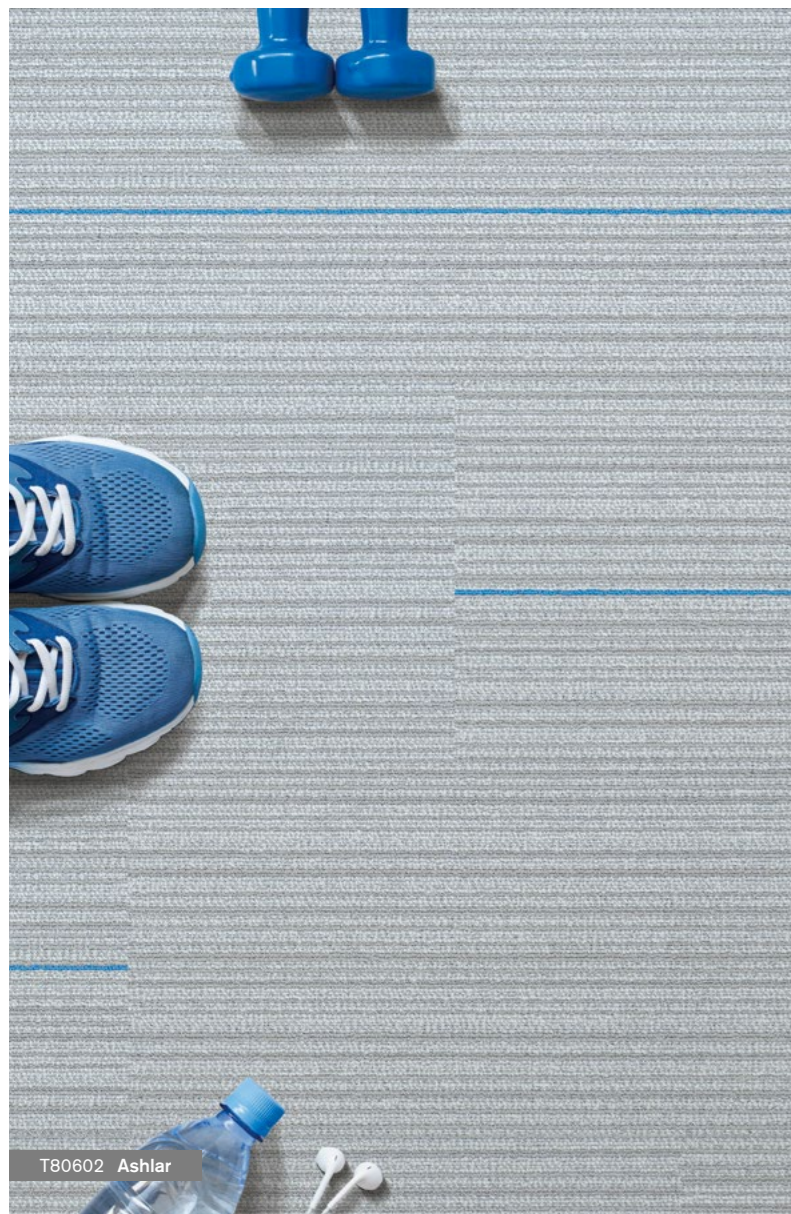


T80504 / T80508 Ashlar

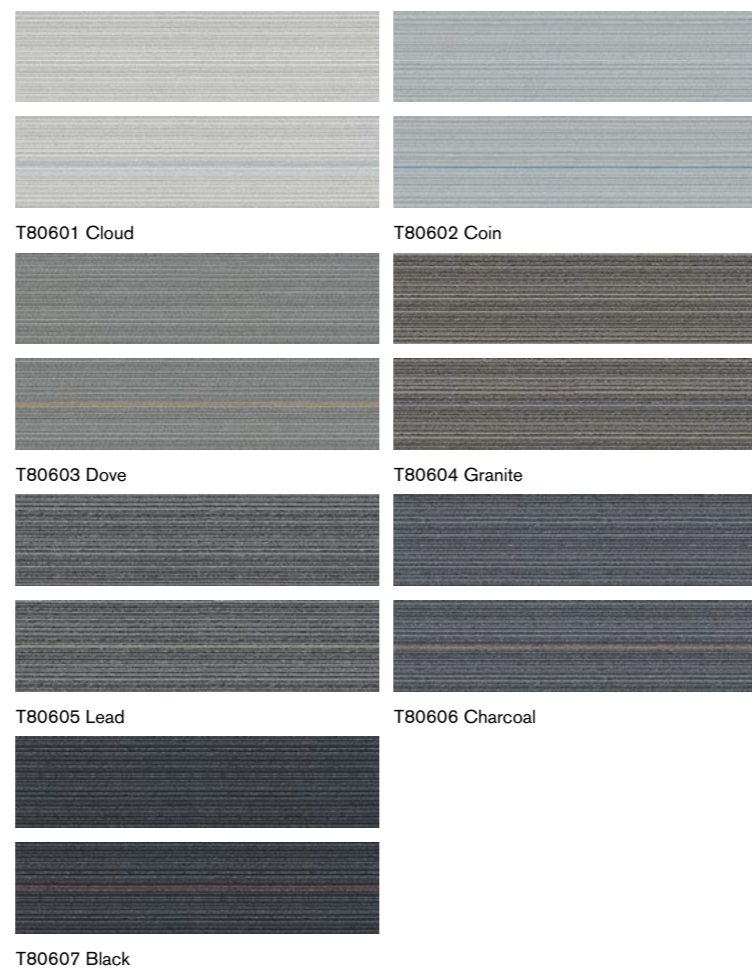


**Face Yarn:** nexlon™ Premium Solution Dyed Nylon featured with aircell  
**Construction:** Hi / Lo Loop  
**Pile Height:** 5.5 / 3.0 mm  
**Tile Size:** 250 mm x 1000 mm  
**Standard Backing:** TUNTEX Duraback  
**Foot Traffic:** Heavy  
**Treatment:** STAINSHIELD™  
 SOILGUARD™

**Face Yarn:** nexlon™ Premium Solution Dyed Nylon  
**Construction:** Multi Hi / Lo Loop  
**Pile Height:** 5.0 - 3.0 mm  
**Tile Size:** 250 mm x 1000 mm  
**Standard Backing:** TUNTEX Duraback  
**Foot Traffic:** Heavy  
**Treatment:** STAINSHIELD™  
 SOILGUARD™



## T806 TRACK 25



## T807 SUNSHOWER



Tuntex T806 "Track 25" contains a random mixture of base color tiles and tiles with accent colors.

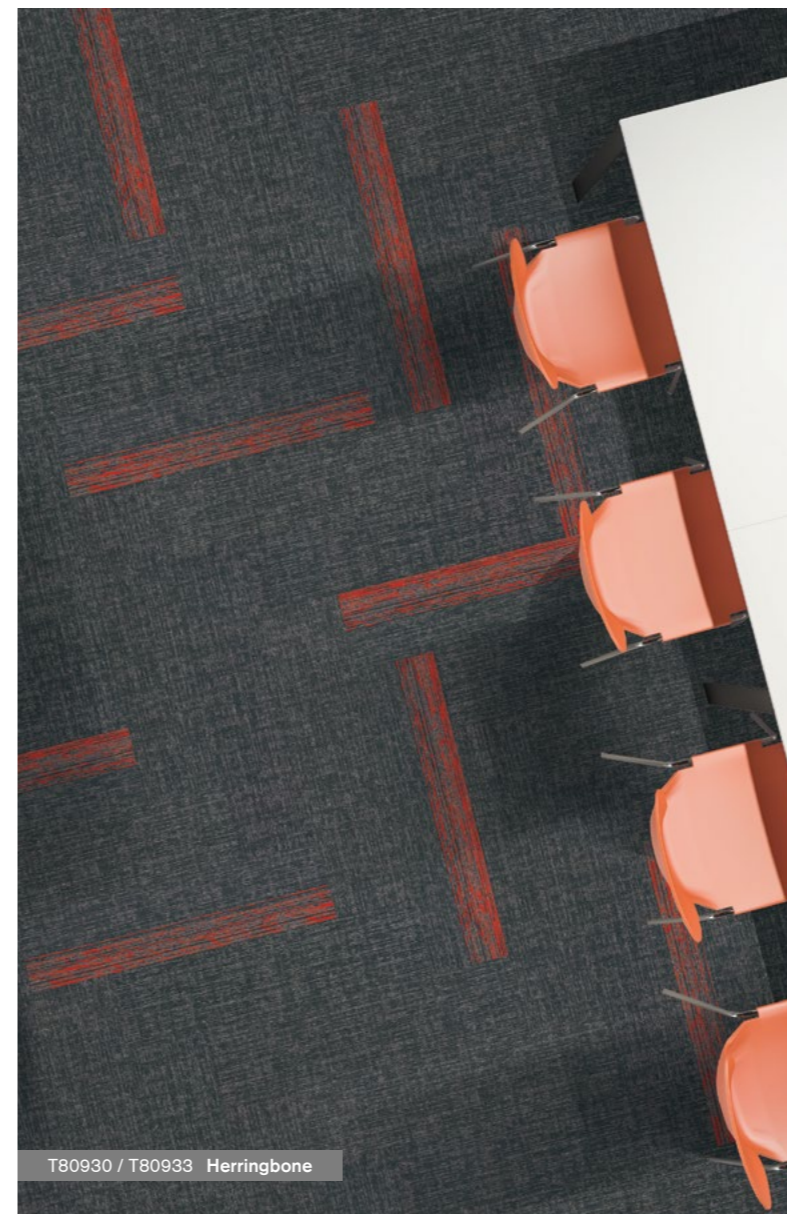
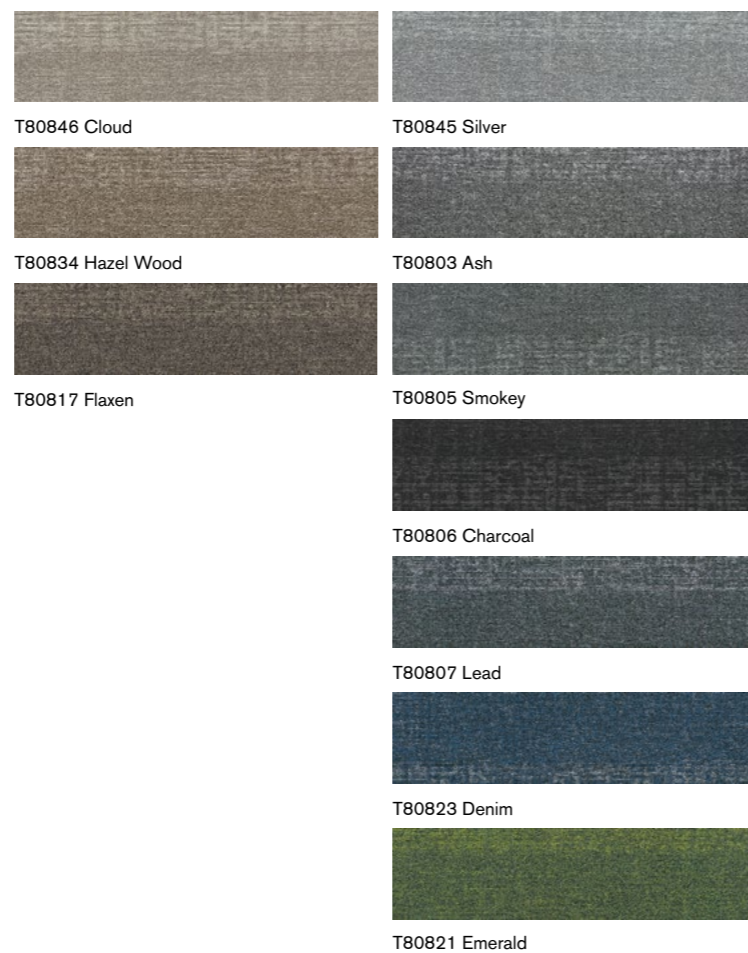
**Face Yarn:** nexlon™ Premium Solution Dyed Nylon  
**Construction:** Hi / Lo Loop  
**Pile Height:** 4.0 / 3.5 mm  
**Tile Size:** 250 mm x 1000 mm  
**Standard Backing:** TUNTEX Duraback  
**Foot Traffic:** Heavy  
**Treatment:** STAINSHIELD™ SOILGUARD™



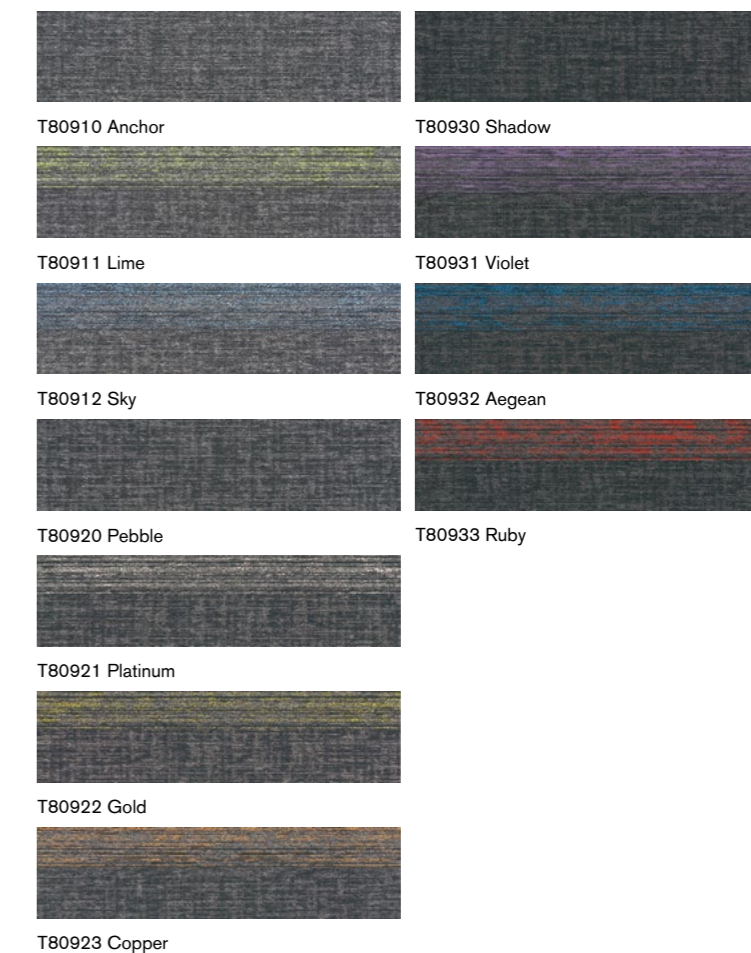
**Face Yarn:** nexlon™ Premium Solution Dyed Nylon featured with aircell  
**Construction:** Hi / Mid / Lo Loop  
**Pile Height:** 5.5 / 4.5 / 3.0 mm  
**Tile Size:** 250 mm x 1000 mm  
**Standard Backing:** TUNTEX Duraback  
**Foot Traffic:** Heavy  
**Treatment:** STAINSHIELD™ SOILGUARD™



## T808 TASSELS



## T809 COLOR STROKE



**Face Yarn:** nexlon™ Premium Solution Dyed Nylon  
**Construction:** Hi / Mid / Lo Loop  
**Pile Height:** 5.0 / 4.5 / 3.0 mm  
**Tile Size:** 250 mm x 1000 mm  
**Standard Backing:** TUNTEX Duraback  
**Foot Traffic:** Heavy  
**Treatment:** STAINSHIELD™  
 SOILGUARD™

**Face Yarn:** nexlon™ Premium Solution Dyed Nylon  
**Construction:** Hi / Mid / Lo Loop  
**Pile Height:** 5.0 / 4.5 / 3.0 mm  
**Tile Size:** 250 mm x 1000 mm  
**Standard Backing:** TUNTEX Duraback  
**Foot Traffic:** Heavy  
**Treatment:** STAINSHIELD™  
 SOILGUARD™

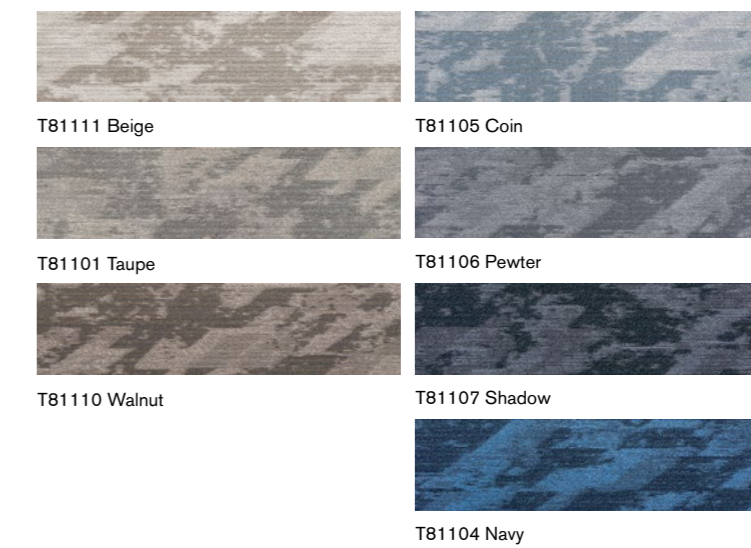




## T810 ABSTRACT



## T811 CUBE



T810 / T811 are complementary to T812 / T813 series

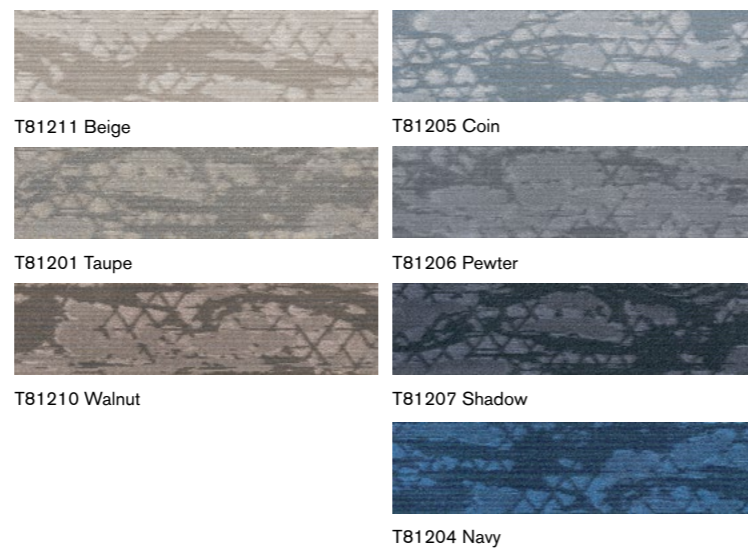
**Face Yarn:** nexlon™ Premium Solution Dyed Nylon  
**Construction:** Hi / Mid / Lo Loop  
**Pile Height:** 5.5 / 5.0 / 3.0 mm  
**Tile Size:** 250 mm x 1000 mm  
**Standard Backing:** TUNTEX Duraback  
**Foot Traffic:** Heavy  
**Treatment:** STAINSHIELD™  
 SOILGUARD™

T810 / T811 are complementary to T812 / T813 series

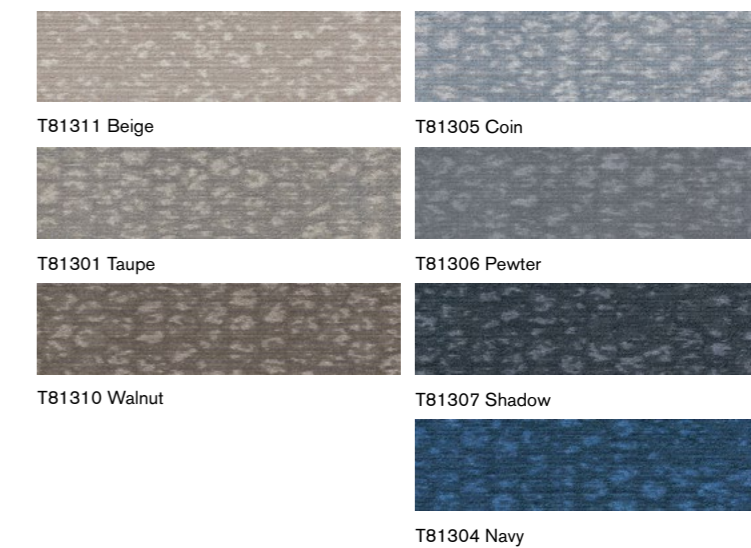
**Face Yarn:** nexlon™ Premium Solution Dyed Nylon  
**Construction:** Hi / Mid / Lo Loop  
**Pile Height:** 5.5 / 5.0 / 3.0 mm  
**Tile Size:** 250 mm x 1000 mm  
**Standard Backing:** TUNTEX Duraback  
**Foot Traffic:** Heavy  
**Treatment:** STAINSHIELD™  
 SOILGUARD™



## T812 EXPRESSION



## T813 NOUVEL



T810 / T811 are complementary to T812 / T813 series

**Face Yarn:** nexlon™ Premium Solution Dyed Nylon  
**Construction:** Hi / Mid / Lo Loop  
**Pile Height:** 5.5 / 5.0 / 3.0 mm  
**Tile Size:** 250 mm x 1000 mm  
**Standard Backing:** TUNTEX Duraback  
**Foot Traffic:** Heavy  
**Treatment:** STAINSHIELD™  
 SOILGUARD™

T810 / T811 are complementary to T812 / T813 series

**Face Yarn:** nexlon™ Premium Solution Dyed Nylon  
**Construction:** Hi / Mid / Lo Loop  
**Pile Height:** 5.5 / 5.0 / 3.0 mm  
**Tile Size:** 250 mm x 1000 mm  
**Standard Backing:** TUNTEX Duraback  
**Foot Traffic:** Heavy  
**Treatment:** STAINSHIELD™  
 SOILGUARD™



T81504 / T81505 Ashlar

## T815 NIGHT FALLS



T81501 Cloud

T81503 Coin

T81502 Slate

T81504 Fossil

T81505 Shadow



T81601 / T81603 Ashlar

## T816 IMMERSE



T81601 Sugar Cookie

T81606 Cloud

T81603 Umber

T81608 Fossil

T81609 Shadow



**Face Yarn:** nexlon™ Premium Solution Dyed Nylon featured with aircell  
**Construction:** Hi / Mid / Lo Loop  
**Pile Height:** 7.0 / 4.5 / 3.5 mm  
**Tile Size:** 250 mm x 1000 mm  
**Standard Backing:** TUNTEX Duraback  
**Foot Traffic:** Heavy  
**Treatment:** STAINSHIELD™ SOILGUARD™

**Face Yarn:** nexlon™ Premium Solution Dyed Nylon featured with quartz  
**Construction:** Hi / Mid / Lo Loop  
**Pile Height:** 5.5 / 4.5 / 3.0 mm  
**Tile Size:** 250 mm x 1000 mm  
**Standard Backing:** TUNTEX Duraback  
**Foot Traffic:** Heavy  
**Treatment:** STAINSHIELD™ SOILGUARD™

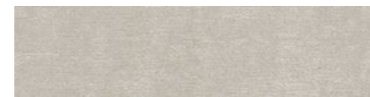


T81903 / T81905 Herringbone

## T819 SANDSCAPE



T81901 Cloud



T81902 Oat



T81903 Sandcastle



T81904 Coffee

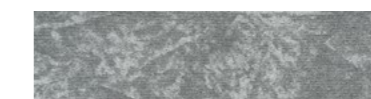


T81905 Carrot



T85001 / T85002 Ashlar

## T850 PAPER MACHE



T85001 Cloud



T85007 Fawn



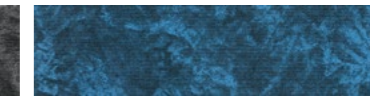
T85002 Shadow



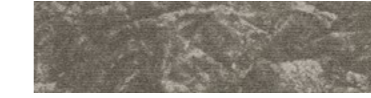
T85008 Olive



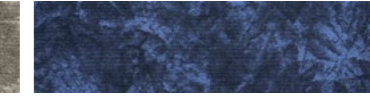
T85003 Charcoal



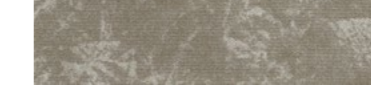
T85009 Cobalt



T85004 Carob



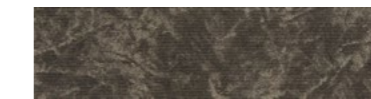
T85010 Navy



T85005 Hazel Wood



T85011 Garnet



T85006 Umber

**Face Yarn:** nexlon™ Premium Solution Dyed Nylon featured with quartz  
**Construction:** Hi / Mid / Lo Loop  
**Pile Height:** 4.5 / 4.2 / 3.5 mm  
**Tile Size:** 250 mm x 1000 mm  
**Standard Backing:** TUNTEX Duraback  
**Foot Traffic:** Heavy  
**Treatment:** STAINSHIELD™ SOILGUARD™



**Face Yarn:** nexlon™ Premium Solution Dyed Nylon featured with aircell  
**Construction:** Hi / Mid / Lo Loop  
**Pile Height:** 5.0 / 4.0 / 3.0 mm  
**Tile Size:** 250 mm x 1000 mm  
**Standard Backing:** TUNTEX Duraback  
**Foot Traffic:** Heavy  
**Treatment:** STAINSHIELD™ SOILGUARD™

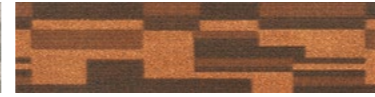


T85102 Ashlar

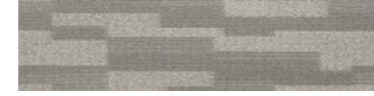
## T851 TETRIX



T85101 Beige



T85104 Syrup



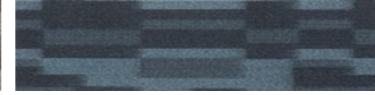
T85102 Hazel Wood



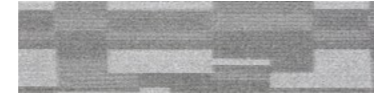
T85109 Slate



T85103 Coffee



T85110 Aegean



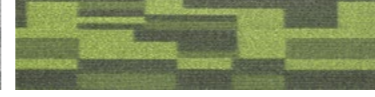
T85105 Dove



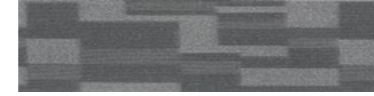
T85111 Navy



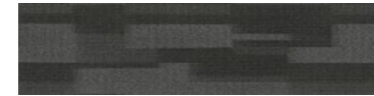
T85106 Fossil



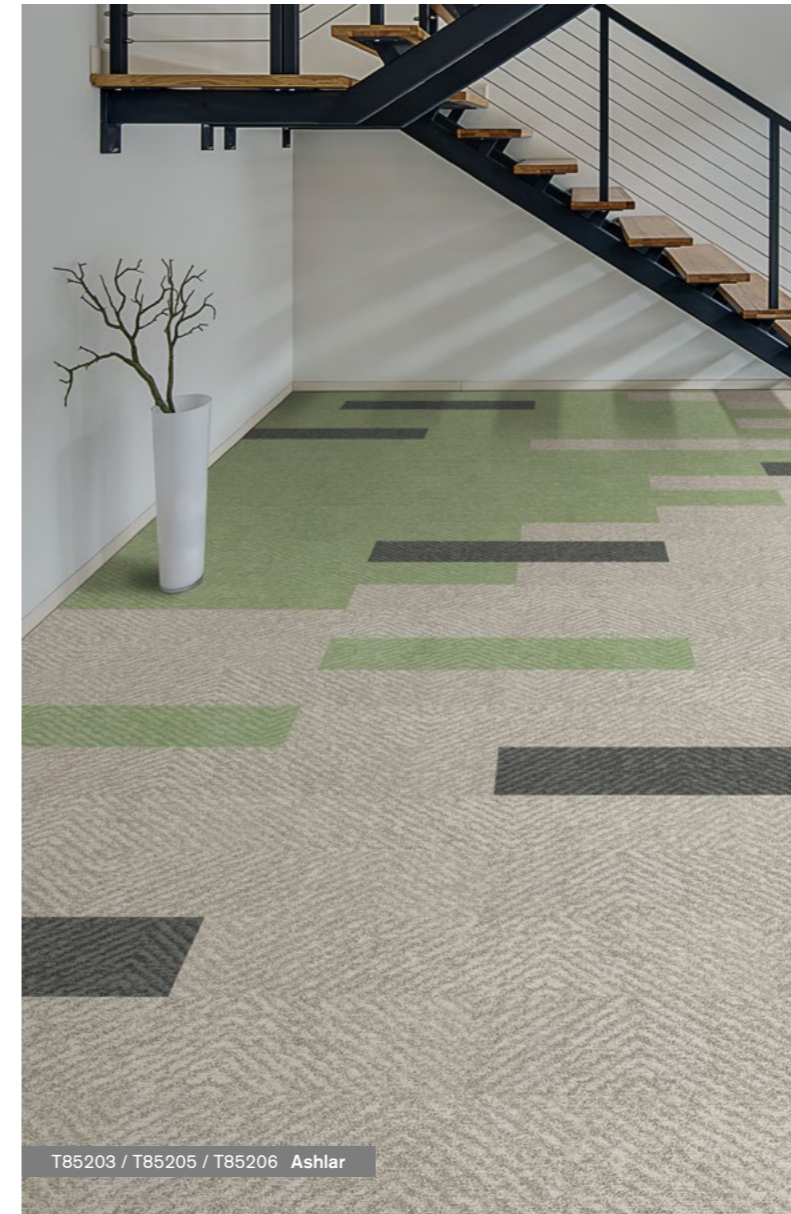
T85112 Juniper



T85107G Iron

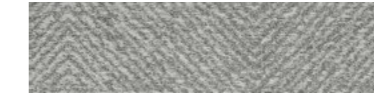


T85108 Shadow



T85203 / T85205 / T85206 Ashlar

## T852 RIPPLE



T85201 Cloud



T85204 Stone



T85202 Fossil



T85205 Olive



T85203 Shadow



T85206 Oyster

**Face Yarn:** nexlon™ Premium Solution Dyed Nylon  
**Construction:** Hi / Mid / Lo Loop  
**Pile Height:** 5.0 / 4.5 / 3.0 mm  
**Tile Size:** 250 mm x 1000 mm  
**Standard Backing:** TUNTEX Duraback  
**Foot Traffic:** Heavy  
**Treatment:** STAINSHIELD™  
 SOILGUARD™

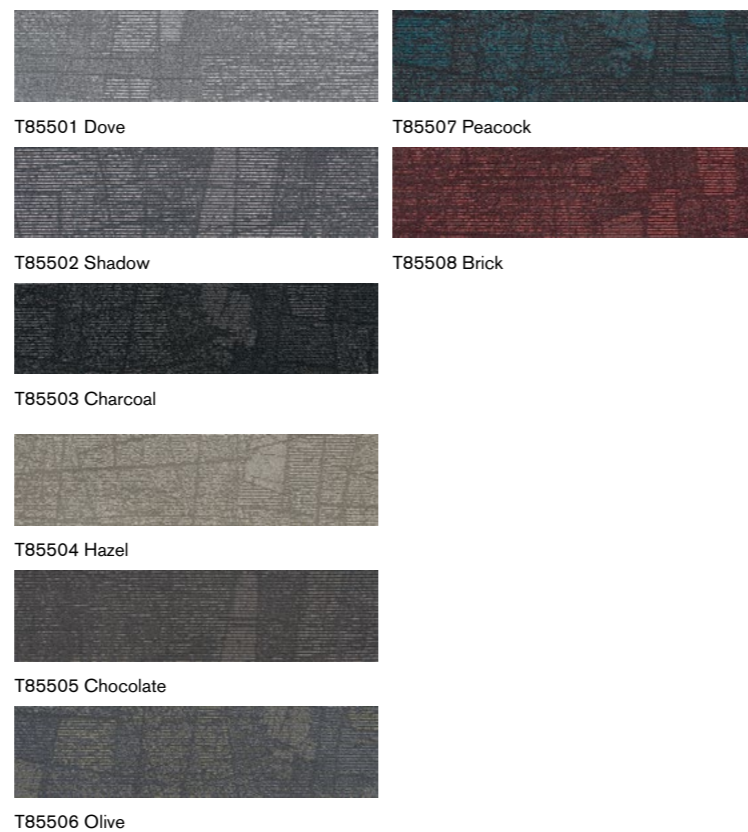


**Face Yarn:** nexlon™ Premium Solution Dyed Nylon featured with aircell  
**Construction:** Hi / Mid / Lo Loop  
**Pile Height:** 6.0 / 5.0 / 3.5 mm  
**Tile Size:** 250 mm x 1000 mm  
**Standard Backing:** TUNTEX Duraback  
**Foot Traffic:** Heavy  
**Treatment:** STAINSHIELD™  
 SOILGUARD™



T85501 / T85502 Ashlar

## T855 REFLECTION



T85710 / T85712 Ashlar

## T857 TREE WALK



**Face Yarn:** nexlon™ Premium Solution Dyed Nylon featured with aircell  
**Construction:** Hi / Mid / Lo Loop  
**Pile Height:** 5.5 / 5.0 / 3.5 mm  
**Tile Size:** 250 mm x 1000 mm  
**Standard Backing:** TUNTEX Duraback  
**Foot Traffic:** Heavy  
**Treatment:** STAINSHIELD™  
 SOILGUARD™

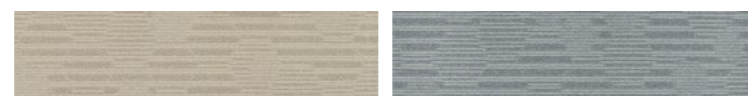


**Face Yarn:** nexlon™ Premium Solution Dyed Nylon featured with aircell  
**Construction:** Multi Hi / Lo Loop  
**Pile Height:** 6.0 - 4.0 mm  
**Tile Size:** 250 mm x 1000 mm  
**Standard Backing:** TUNTEX Duraback  
**Foot Traffic:** Heavy  
**Treatment:** STAINSHIELD™  
 SOILGUARD™



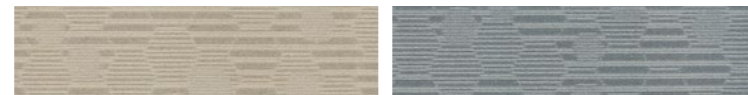
T86103 Ashlar

## T861 BUMBLEBEES



T86101 Tan

T86108 Aegean



T86102 Hazel Wood

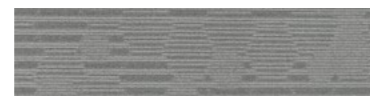
T86109 Spruce



T86103 Sand



T86104 Coin



T86105 Anchor



T86106 Shadow



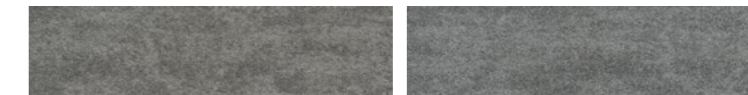
T86301 / T86302 Ashlar

## T863 MAGNETITE



T86301 Ash

T86303 Cloud



T86302 Fossil

T86304 Coin



T86305 Anchor



**Face Yarn:** nexlon™ Premium Solution Dyed Nylon featured with aircell  
**Construction:** Hi / Mid / Lo Loop  
**Pile Height:** 6.0 / 5.5 / 3.0 mm  
**Tile Size:** 250 mm x 1000 mm  
**Standard Backing:** TUNTEX Duraback  
**Foot Traffic:** Heavy  
**Treatment:** STAINSHIELD™  
 SOILGUARD™

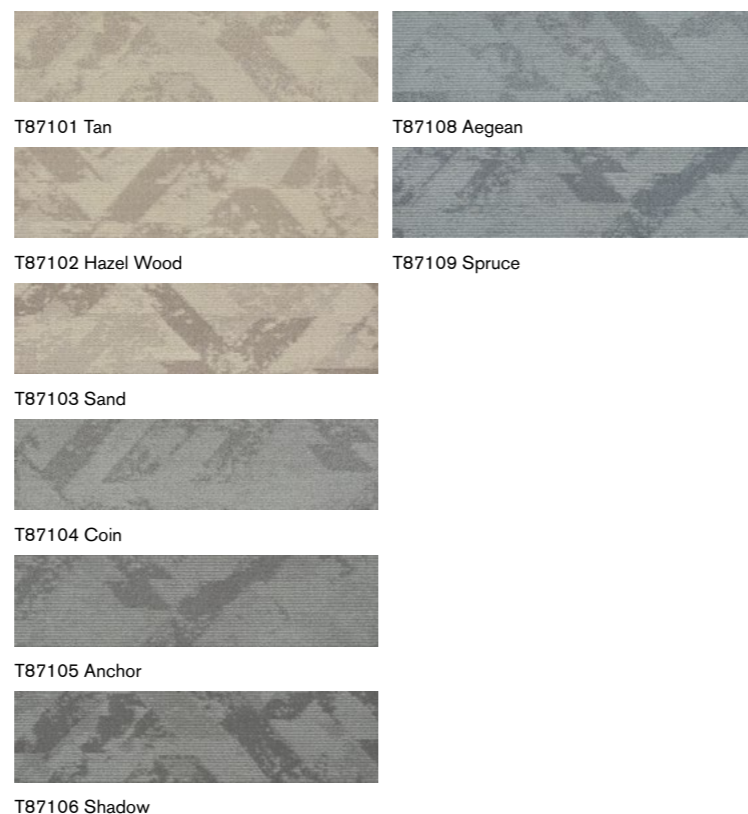


**Face Yarn:** nexlon™ Premium Solution Dyed Nylon featured with aircell  
**Construction:** Hi / Lo Loop  
**Pile Height:** 5.5 / 3.0 mm  
**Tile Size:** 250 mm x 1000 mm  
**Standard Backing:** TUNTEX Duraback  
**Foot Traffic:** Heavy  
**Treatment:** STAINSHIELD™  
 SOILGUARD™



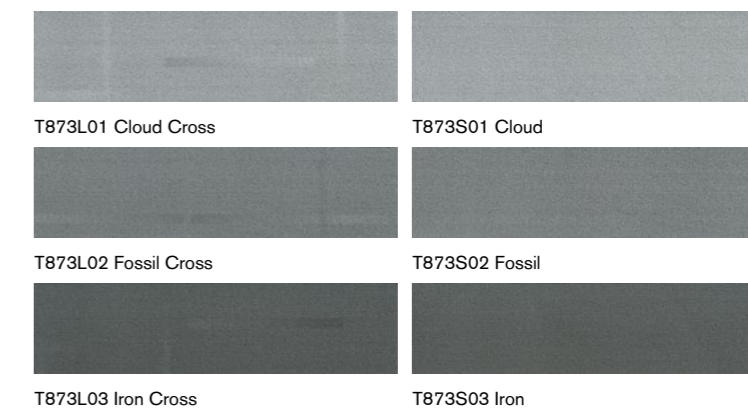
T87102 / T87108 / T87109 Herringbone

## T871 ICE SHARDS



T873L01 / T873L02 / T873L03 Ashlar / Herringbone

## T873 TIDE



**Face Yarn:** nexlon™ Premium Solution Dyed Nylon featured with aircell  
**Construction:** Hi / Lo Loop  
**Pile Height:** 5.8 / 3.0 mm  
**Tile Size:** 250 mm x 1000 mm  
**Standard Backing:** TUNTEX Duraback  
**Foot Traffic:** Heavy  
**Treatment:** STAINSHIELD™  
 SOILGUARD™








**Face Yarn:** nexlon™ Premium Solution Dyed Nylon featured with aircell  
**Construction:** Multi Hi / Lo Loop  
**Pile Height:** 6.0 - 4.0 mm  
**Tile Size:** 250 mm x 1000 mm  
**Standard Backing:** TUNTEX Duraback  
**Foot Traffic:** Heavy  
**Treatment:** STAINSHIELD™  
 SOILGUARD™





T89501 / T89502 / T89503 Herringbone

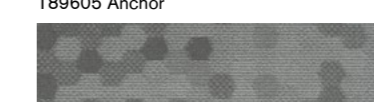
## T895 DENIM

	
T89501 Hazel Wood	T89507 Stone
	
T89502 Hazelnut	T89508 Slate
	
T89503 Blush	T89509 Sage
	
T89504 Pebble	
	
T89505 Shadow	
	
T89506 Fossil	



T89604 / T89605 Ashlar

## T896 SNOWFLAKES

	
T89601 Tan	T89608 Aegean
	
T89602 Hazel Wood	T89609 Spruce
	
T89603 Sand	
	
T89604 Coin	
	
T89605 Anchor	
	
T89606 Shadow	



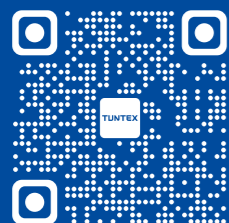
**Face Yarn:** nexlon™ Premium Solution Dyed Nylon featured with aircell  
**Construction:** Hi / Lo Loop  
**Pile Height:** 6.0 / 3.0 mm  
**Tile Size:** 250 mm x 1000 mm  
**Standard Backing:** TUNTEX Duraback  
**Foot Traffic:** Heavy  
**Treatment:** **STAIN**SHIELD™  
**SOIL**GUARD™



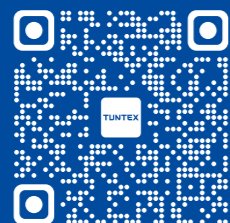
**Face Yarn:** nexlon™ Premium Solution Dyed Nylon featured with aircell  
**Construction:** Hi / Lo Loop  
**Pile Height:** 6.5 / 3.0 mm  
**Tile Size:** 250 mm x 1000 mm  
**Standard Backing:** TUNTEX Duraback  
**Foot Traffic:** Heavy  
**Treatment:** **STAIN**SHIELD™  
**SOIL**GUARD™

# SHOWCASES





Official Website



Official Wechat

**ShangHai Office**

666 ShenHong Rd., ZhengRong Center,  
Bldg 1, 3F, ShangHai, 201106, China  
TEL: +86 21 62333488  
EMAIL: ShangHai@tuntexcarpet.com

**Taiwan Office**

No.1, ChengGong Rd., West Central Dist,  
Tainan City, 70050, Taiwan  
EMAIL: Taiwan@tuntexcarpet.com

**HongKong Office**

Room 2306, Billion Trade Centre, 31 HungTo Rd.,  
Kowloon, 852, HongKong  
TEL: +852 28580353  
EMAIL: HongKong@tuntexcarpet.com

**Japan Office**

3-16-10, Yushima, Bunkyo-ku, Tokyo, 113-0034, Japan  
TEL: +81 3 38345148  
EMAIL: Japan@tuntex-carpet.com

**Singapore Office**<South East Asia>

No.60 Paya Lebar Rd., #10-43 Paya Lebar Square,  
Singapore, 409051  
EMAIL: SouthEastAsia@tuntexcarpet.com

**UK Office**<Europe, Middle East, Africa and India>

Yoxall Lodge, Scotch Hill Rd., Newchurch, Burton on Trent,  
DE13 8RL, UK  
TEL: +44 7836 506105  
EMAIL: UK@tuntexcarpet.com

**Australia Office**<Australia and New Zealand>

5 Coolaroo Avenue, Hurstbridge, Victoria, 3099, Australia  
EMAIL: Australia@tuntexcarpet.com

**Mexico Office**<Latin America>

General Salvador Alvarado 56, Col. Escandon I secc. Del.  
Miguel Hidalgo, CP 11800, Mexico  
TEL: +52 1 55 1654 0939  
EMAIL: LatinAmerica@tuntexcarpet.com