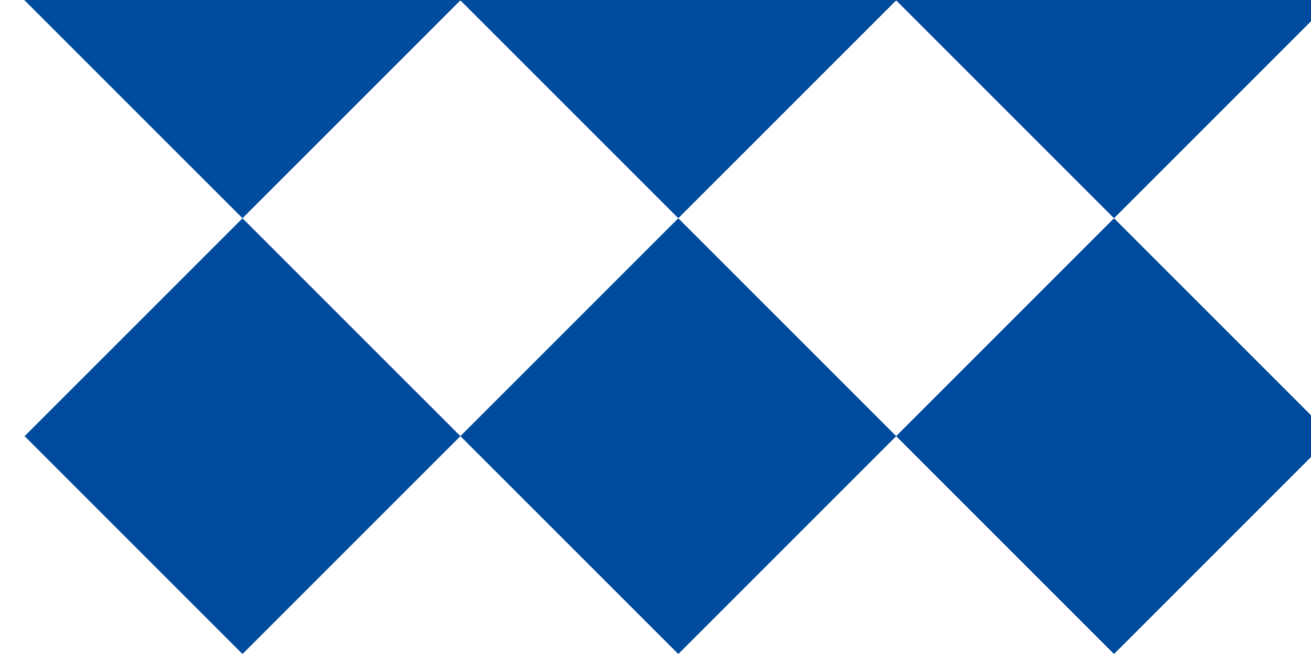


ISSUE 8.0.1  
FOR  
TUNTEX™

< 东帝士产品合集 >



08



**A leading carpet manufacturer  
dedicated to green technology and  
environmentally friendly  
production methods.**

**环保地毯制造专家**

# 56 YEARS ANNIVERSARY

56 年的积累与发展，Tuntex 东帝士逐步成长为行业领军品牌。

With 56 years of expertise and development, Tuntex has evolved into a leading brand in the industry.

成立于 1968 年，东帝士（Tuntex）已经成长为受到行业和专业用户青睐的国际化地毯品牌。依托高品质的地毯产品、创意性的地材解决方案以及高效的团队，东帝士携手全球合作伙伴，为商业空间带来创新的地面设计。

Founded in 1968, Tuntex has established itself as an internationally renowned carpet brand, highly regarded by both industry professionals and end-users. Backed by high-quality carpet products, innovative flooring solutions, and a dedicated team, Tuntex collaborates with global partners to deliver cutting-edge flooring designs tailored to commercial spaces.



## 1968

成立东帝士地毯品牌  
Tuntex established as a carpet brand.

## 1994

在中国江苏省设立大规模生产基地  
Launched a large-scale production facility in Jiangsu Province, China.

## 1995

建立污水处理系统  
Implemented advanced wastewater treatment systems.

## 2008

成为首批获得美国地毯和块毯协会（CRI）颁发的绿色标签认证的中国地毯品牌  
Became one of the first Chinese carpet brands to earn the prestigious Green Label certification from the Carpet and Rug Institute (CRI), U.S.

## 2012

以 3R 理念为导向，建立产品、材料和生产三位一体的可持续发展体系  
Pioneered a comprehensive sustainability framework, driven by the 3R principle (Reduce, Reuse, Recycle), integrating products, materials, and production processes.

## 2017

关注产品健康与绿色，实现透明的成分披露  
Prioritized the effects of product on health and environmental sustainability, achieving full transparency in material disclosures.

## 2021

推出 aircell™ 空灵纱，独特三角中空的纱线结构大大提升了地毯性能  
Unveiled aircell™, an innovative yarn featuring a unique triangular hollow structure, dramatically enhancing carpet performance.

## 2023

推出 LuxCushion™ 莱适软底，对底背系统进行升级，带来不止舒适的空间体验  
Launched LuxCushion™, a next-generation carpet backing system designed to elevate both comfort and the overall spatial experience.

## 2024

新工厂落地，进一步推动可持续发展与创意  
Inaugurated a new state-of-the-art factory to further advance sustainability and innovation in manufacturing.



# 创新 Innovative

Tuntex 东帝士一直在创新路上前行，每一次技术的革新与进步都是有价值性的提升，正是这种进取的精神激励着东帝士勇于挑战，敢于改变，不断创新。

Tuntex is always on the look out for technological opportunities that can bring more value to our partners and customers. For Tuntex, it is the mindset of constantly challenging ourselves, and reshaping what we think we know.

技术  
TECHNOLOGY

设计  
DESIGN

可持续  
SUSTAINABLE

## 01 耐可隆尼龙纱线

nexlon™

nexlon™耐可隆纱线是东帝士自主研发推出的产品。运用原着染技术，通过原始材料混合熔融再抽丝的方式，提高纱线的色牢度。历久弥新，保证室内环境舒适美观。

nexlon™ is a premium quality nylon fiber developed and manufactured exclusively by Tuntex. By applying Solution Dyed Technology, it mixes and melts colors together. nexlon™'s consistent and solid color fastness ensures long-time visual enjoyment.



## 02 莱适软底

LUXCUSHION™

LuxCushion™莱适软底是东帝士最新的软底底背系统。创造性地使用高弹性尼龙纱线作为主要材料，大大提高了地毯的支撑力和回弹性。在提升空间幸福感的同时，实现了舒适、健康与可持续发展的有机结合。

LuxCushion™ is a unique backing system released by Tuntex. By converting high resilience nylon fiber into unique backings, LuxCushion™ redefines the softness of carpets, taking performance and comfort experience to the next level. Underfoot comfort and true environmental benefits are finally here.





# 01 耐克隆尼龙纱线

## nexlon™

Tuntex 东帝士是国内极少数具备一体化生产能力的企业，拥有自主研发的高端原着染色尼龙纱线 - nexlon™ 耐克隆。

Tuntex is one of a very few carpet manufacturers that are completely vertical, with our ability to manufacture in-house Solution Dyed Nylon - nexlon™.

### Innovative

Tuntex's strong capabilities enable more types of yarns to be developed to meet the changing trends.

### 200+ Colors

### Sustainable Solution

There are over 200 colors that can be provided by nexlon™ based on market demands.

nexlon™ is available for recycling to produce new yarn, backing, and carpets.

## 原着染色 Premium Solution Dyed

nexlon™ 耐克隆纱线采用原着染色技术制造，将色母粒与尼龙切片一同液化，再抽丝制成纤维，使纱线获得内外一致的纯色。因此，纱线具有优越的抗褪色性和耐洗性。

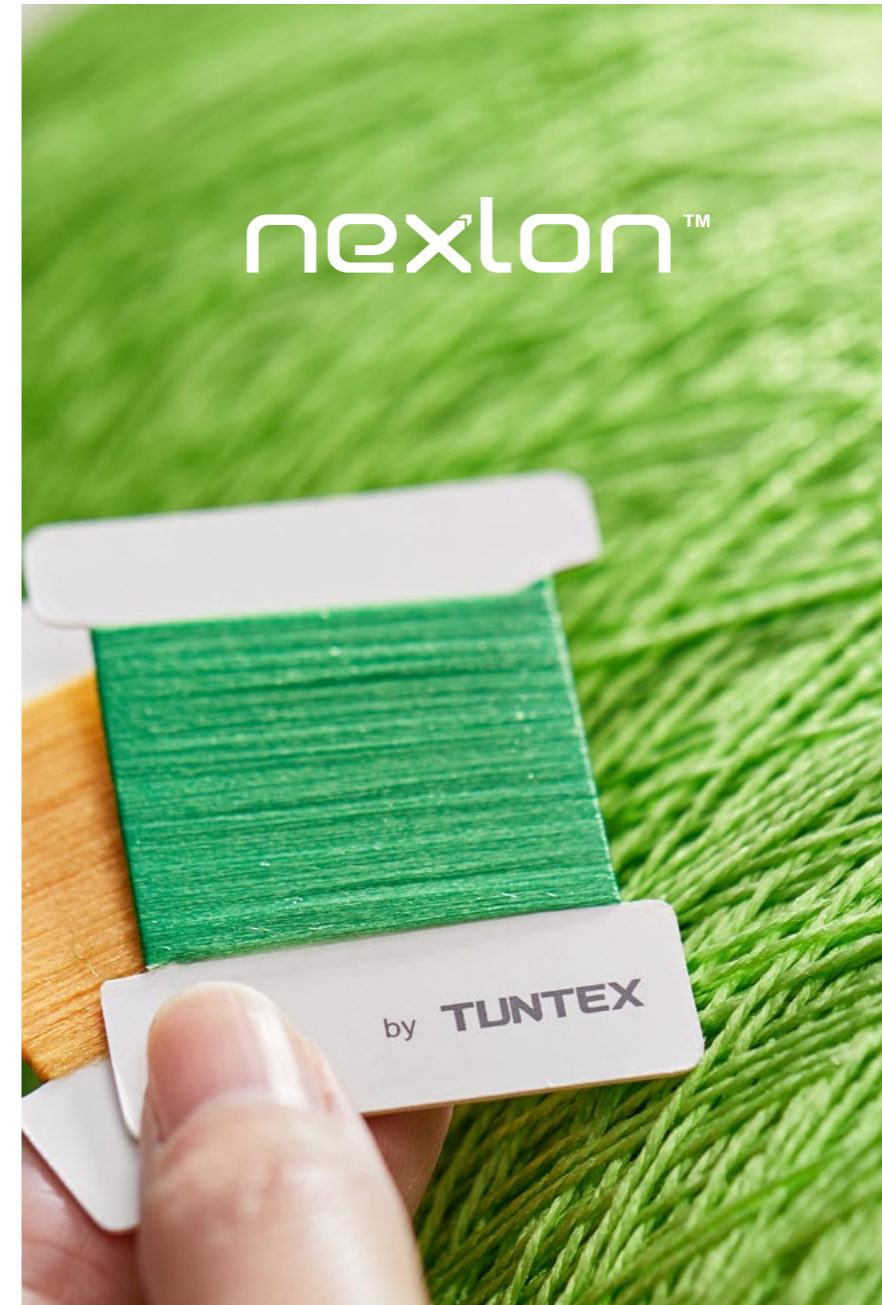
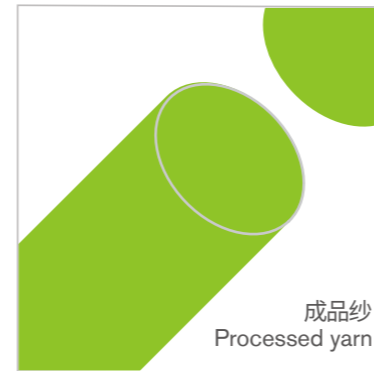
nexlon™ is manufactured using Solution Dyed Technology. This method mixes and melts colors together to achieve a consistent and solid color fastness. As a result, the yarn has excellent resistance to fading even using harsh cleaning methods.

尼龙切片  
Nylon Chips



+

色母粒  
Masterbatch



## 高色牢度 Outstanding Color Fastness

将地毯样品的一端用消毒液浸泡 30 分钟后的测试结果：

Soak one end of the carpet sample into the diluted bleach water for 30 minutes:

原着染色纱  
Solution Dyed

白纱  
White Yarn



浸泡前 Before



浸泡前 Before



浸泡后 After



浸泡后 After

经实验证明，经常用消毒水喷洒，Tuntex 东帝土地毯不会出现颜色变化，历久弥新，确保室内环境舒适美观。

Our study found that even using a bleach solution, Tuntex carpet always has excellent color fastness. It ensures that the product can be used for a long time and remain beautiful, bringing lasting fresh visual enjoyment.





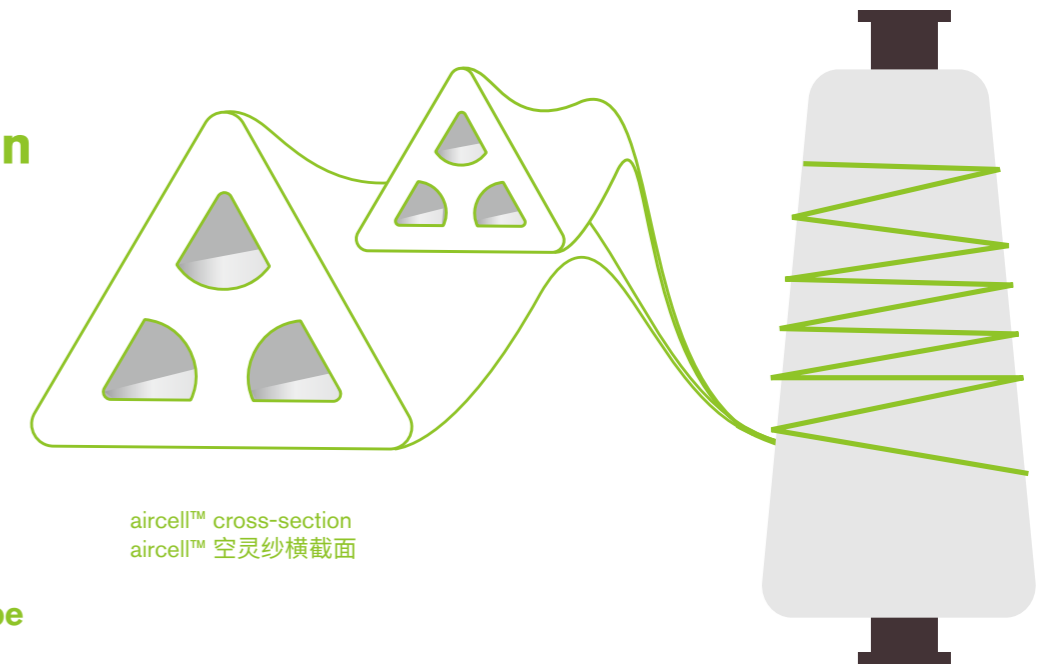
# 创新研发 R&D

aircell™ 空灵纱是由东帝士自主研发和生产的中空长丝纤维。稳定的三角形横截面、蓬松的中空结构和弹力十足的 Y 形支撑进一步优化了地毯的性能，更易维护和持久耐用。

aircell™ is an innovative hollow filament fiber that is developed and manufactured exclusively by Tuntex. The combination of the Triangular cross-section, Hollow structure and Y-Shaped configuration provides enhanced performance, easier maintenance and long lasting durability to our carpets.



## 独特的纱线形状 Unique Yarn Configuration



aircell™ cross-section  
aircell™ 空灵纱横截面



\* 三角结构  
Triangular Shape



\* 中空结构  
Hollow Structure

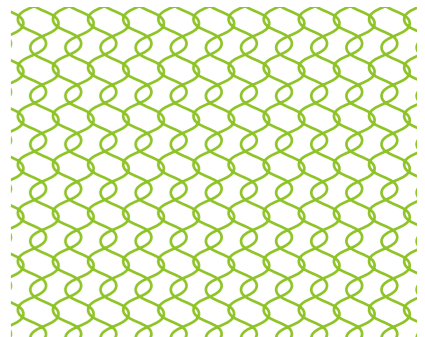


\* Y 形结构  
Y-Shape Structural Support

## 优化聚合物结构 Enhanced Polymer



\* 普通纱线聚合物结构  
Polymer Structure For Typical Yarn



\* 优化聚合物结构，增强纱线回弹性  
Enhanced Polymer To Achieve More Bounce Effect

aircell™ 空灵纱的横截面被特殊设计成三角形结构，兼具光滑表面。中空结构由 3 个均匀的孔洞组成，可以将空气存储其中，增加纱线纤维的容积和空间质感。

The cross-section of aircell™ filament is designed as a triangular structure with smooth surface. The hollow structure comes in a three-hole shape, allowing air to be trapped in the voids, increasing the overall volume of the filament.

与 nexlon™ 耐可隆的所有产品一样，aircell™ 空灵纱采用优质原着染色尼龙纱线耐可隆，但是其聚合物分子结构经过优化调整，显著提升纱线回弹能力，从而为地毯提供更好的回弹性和耐用性。

aircell™ utilizes a premium solution dyed nylon, the same as all nexlon™ products, but the molecular structure of its polymer has been modified to enhance its spring effect, and hence achieve better resilience and durability for the carpets.



aircell™  
空灵纱

More Bulk  
More Bounce  
More Benefit

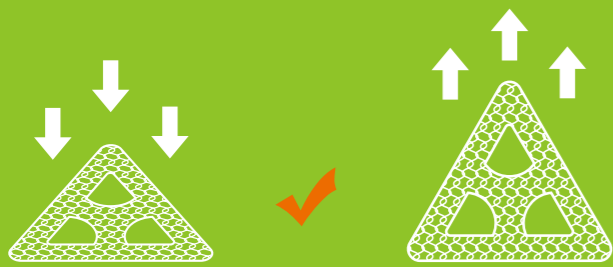


# 技术优势

## Technical Strength

### 提高回弹性

#### Improved Resilience



\* Y型结构，材料升级，回弹力更强  
Enhanced structure results in better resilience

### 增加蓬松度

#### Increased Bulkiness



\* 相同重量，aircell™ 体积更大更蓬松  
At same weight, aircell™ provides more volume than typical yarn

### 减少尘土积聚

#### Soil Releasing



\* 光滑表面，有效减少尘土积聚  
Smooth surface, prevent soil accumulation

### 持久如新

#### Soil Hiding



当光照射在常规纤维上时，大部分光线可穿透纱线，导致落入纱线底部的尘土更易察觉。  
As light hits a typical fiber, there is less light reflected, more going through, therefore, results in visible soil and dirt.

\* 折射光线，降低尘土可见性  
Light is reflected, lower soil visibility

# 主要特点

## Key Benefits

### 更好的性能

#### Better Performance

一直以来，Tuntex 东帝士致力于生产高品质的产品，追求卓越的性能。aircell™ 空灵纱的研发与使用，提升了东帝土地毯的蓬松度和回弹性，为客户提供比以往更优质的产品与体验。

Tuntex is always committed to a high-quality standard and premium performance. With aircell™, Tuntex is able to further improve its carpet performance by increasing the bulkiness and resilience significantly, providing customers with better products than ever before.

### 维护更轻松

#### Easier Maintenance

aircell™ 空灵纱光滑的表面可以很大程度减少脏污的积累，同时基于纤维的中空结构，进一步降低了脏污的可见性。毯面底层积累的脏污容易清洁和维护。

As aircell™ can minimize soil accumulation, this reduces the chance of soil penetration into or beneath the fibers. Soil then stays on the surface, which makes cleaning and maintenance much easier for carpet users.

### 更持久耐用

#### Increased Durability

aircell™ 空灵纱独特的中空结构提升了纱线的回弹性，降低脏污的可见性，有利于保持地毯亮丽如新，保持毯面蓬松质感，延长地毯使用寿命。

aircell™ features a unique hollow structure that improves resilience and reduces the appearance of soil, which helps carpet remain new longer, retain its bulkiness longer, and extend its usable life.



aircell™  
空灵纱

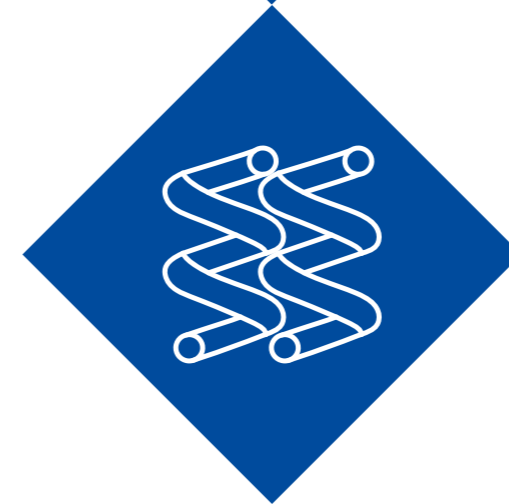
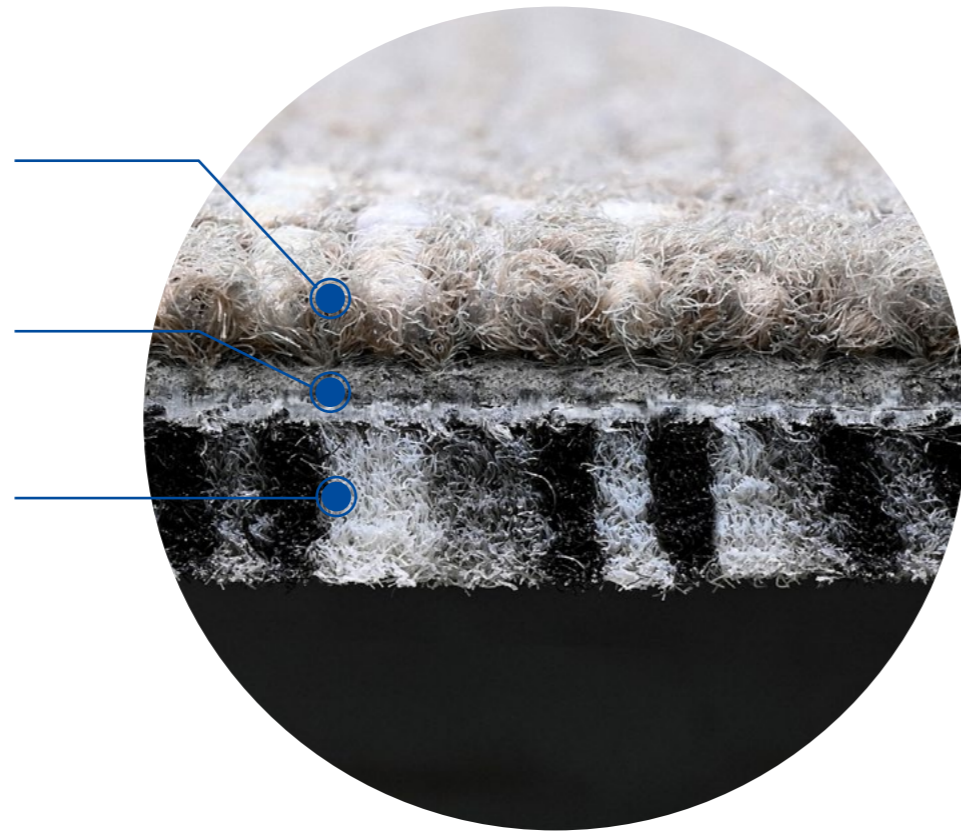
More Bulk  
More Bounce  
More Benefit



# 颠覆性创新底背 Revolutionary New Backing System

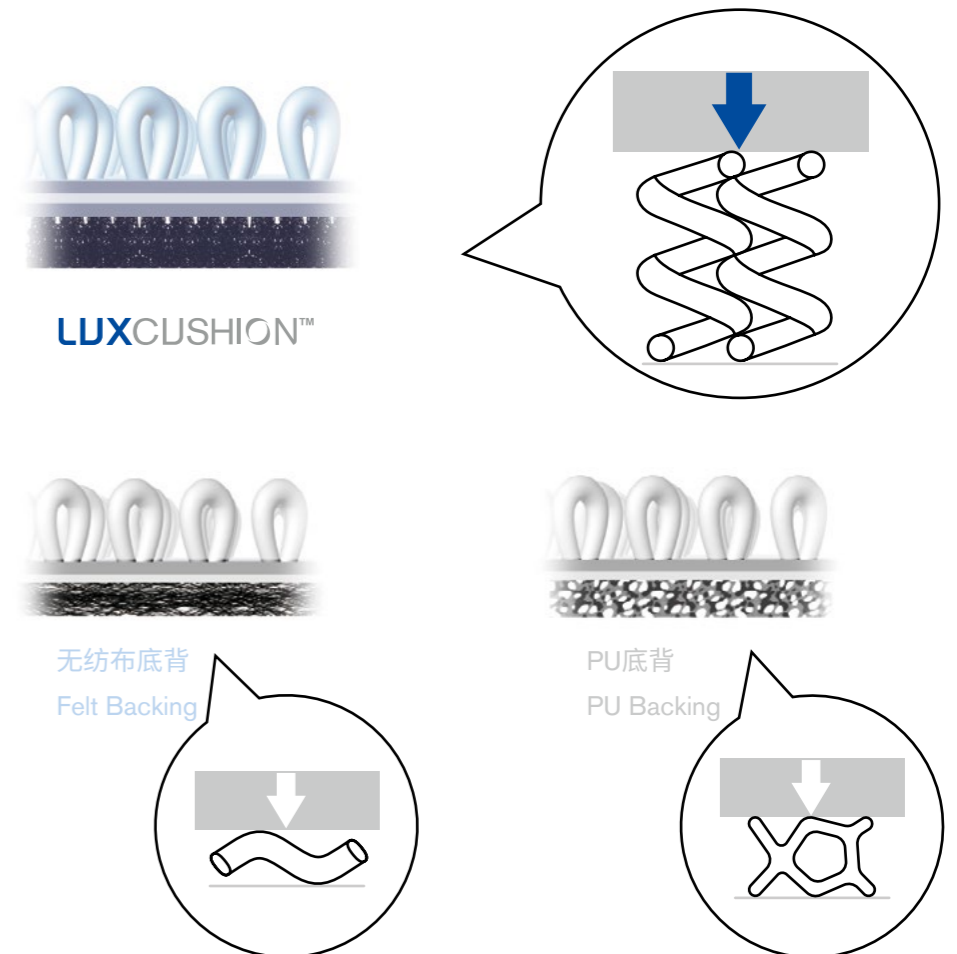
## 全新结构 Creative Backing Structure

- 1 毯面: nexlon™ 耐可隆高端原着染纱线  
nexlon™ – premium solution dyed nylon
- 2 强化玻璃纤维  
Reinforced fiber glass
- 3 底面: 高弹性莱适纱线  
Repurposed high resilience nylon



与传统底背系统不同, LuxCushion™ 莱适软底创新采用高弹性莱适纱线, 利用地毯生产过程中的废纱资源, 采用簇绒工艺, 让具有高蓬松性的纱线以3D立体结构紧密呈现, 相比传统的针刺无纺布底背或是树脂发泡底背, 其支撑性、回弹性更好, 纱线如同一根根“小弹簧”, 为地面材料带来更为舒适的踩踏体验。

Different from typical backing systems, LuxCushion™ repurposes high resilience nylon that is a byproduct PU yarn wasted during carpet manufacturing process. Compared to typical felt or foam backing, LuxCushion™ shows a superior resilience performance thanks to its unique 3D structure. Tufted like "springs", LuxCushion™ provides better underfoot comfort for indoor environment.



## 全新软底科技 双层夹心设计 Patented Technology Unique Sandwich Design

莱适软底  
LUXCUSHION

专利号 the Patent Number  
Chinese Patent No.: ZL 202020360039.5  
United States Patent No.: US 11,668,046B2



# 为舒适而生

## Design For Comfort



### 柔软舒适全面提升

#### Underfoot Comfort

LuxCushion™ 莱适软底使用高弹性尼龙纱线, 提供充分的缓冲空间, 有效减少行走时足底压力。地毯舒适度提升约 **30.2%**, 减少 **19.8%** 左右的肌肉酸疼与疲惫, 带来前所未有的舒适使用感。

The usage of high resilience nylon allows LuxCushion™ to offer adequate space to squeeze and bounce back with firm foot supports. It improves comfort level by about 30.2% and reduces foot fatigue by about 19.8%.



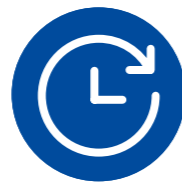
### 有效降噪

#### 耳边清静更舒适

#### Acoustic Comfort

LuxCushion™ 莱适软底采用高弹性尼龙纱线作为底背材料, 其致密厚实的纤维结构能够有效改善空间声音质量, 根据相关测试, 其对撞击声改善量达 **37** 分贝, 比普通底背高出 **50%**, 能达到一般 LVT 的 **5** 倍; 吸音系数则达 **0.40**。

With the thick layers of nylon fibers, LuxCushion™ disperses the unwanted noise in the environment. It has been tested and found to be very effective in reducing transmitted impact sound by 37dB, which is 5 times better than LVT and 50% better than typical backing. In addition, LuxCushion™ has a sound absorption coefficient of 0.40, indicating impressive sound absorption capabilities.



### 出色回弹性

#### 长久舒适有保证

#### Long-lasting Comfort

LuxCushion™ 莱适软底在模拟极端人流测试后的恢复率为 **91.7%**, 回弹出色, 柔韧耐用。

LuxCushion™ possesses an excellent recovery rate of 91.7% after an extremely heavy traffic test. The comfort level has been developed to support our wellness goals in the long run.



### 健康升级

#### Indoor Comfort

LuxCushion™ 莱适软底结构简化, 制造过程中不添加塑化剂, TVOC 也符合绿色环保标准, 并加入特殊工艺处理。可有效减少健康隐患的滋生和存在, 创造更安全、更健康的室内环境。

The unique structure of LuxCushion™ requires fewer materials during production, is plasticizer-free, and has very low TVOC. Special treatments are added to further enhance this product. LuxCushion™ helps to mitigate these health hazards and create a safer and healthier indoor environment.

# 为未来而生

## Design For Future

一直以来, Tuntex 东帝士始终通过不断创新减少污染、永续发展这一理念也贯穿于 LuxCushion™ 莱适软底的研发中。

Tuntex has always been seeking green manufacturing through continuous innovations. The concept of sustainable development also runs through the research and development of LuxCushion™.

TUNTEX™



3R 运动倡导者  
CALL FOR 3R

Reuse  
再利用

Reduce  
再减少

Recycle  
再循环

Tuntex 东帝士在生产过程中直接收集这些纱线废料, 转化成资源并将它们直接用在 LuxCushion™ 莱适软底的底背上, 实现对生产废料最大限度的再利用。

Tuntex collects directly and converts these wasted yarns into available materials for the production of LuxCushion™ which maximizes the resource efficiency.

毯面和底背均 100% 可回收, 形成地毯生产与回收的绿色循环, 实现地毯行业的可持续发展。

Both the face yarn and the backing are 100% recyclable to create the green cycle of carpet production.

LuxCushion™ 莱适软底的底背采用高弹性莱适纱线, 收集生产过程中废纱资源, 在原厂经过简单处理即可直接制成底背, 省略了传统回收过程需要消耗的大量能源和资源, 也减少了碳排放, 实现了节能减排。

LuxCushion™ repurposes high resilience nylon that is a byproduct from yarn wasted during the carpet manufacturing process and directly reproduces into the backing in the original factory. Energy, resources and carbon emissions that were required in the past have been decreased to protect the environment.



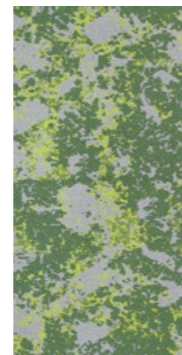
# 01

## Prestige Line

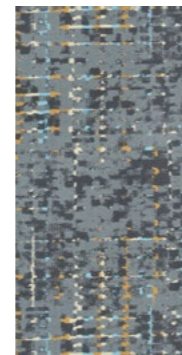
Prestige 是东帝士艺术、设计与工艺的集大成产品。我们从鲜明与极富个性的艺术风格中获取灵感，通过对形式的拆解和色彩的运用，使用高端工艺将其呈现在地毯上。Prestige 代表着东帝士的最高水准，是品牌的匠心之作。

Prestige is the culmination of Tuntex art, design and craftsmanship. We carefully considered the concepts, aesthetics, styles and colors, bringing together to create excellence carpets. Indeed, Prestige is viewed as the very best of the brand.

CONTENTS



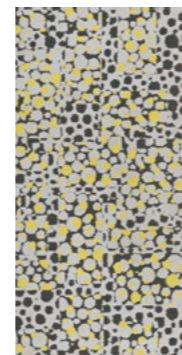
Green Field  
LC05  
P 29



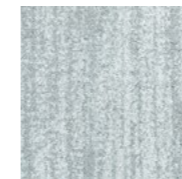
Field of Dreams  
LC06  
P 30



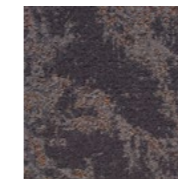
Autumn Peak  
LC07  
P 31



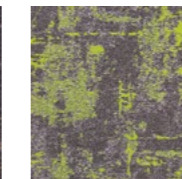
Bouquet  
LC08  
P 33



Torrent  
T601  
P 35



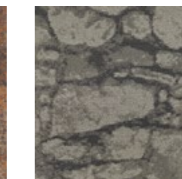
Bird's-eye on Metro  
T700  
P 36



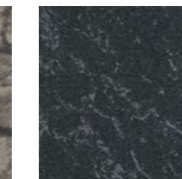
Space Cloud  
T707  
P 37



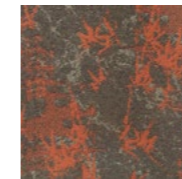
Color Dew  
T708  
P 38



Flagstone  
T709  
P 39



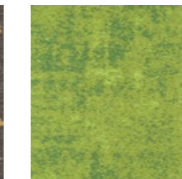
Base  
T710  
P 41



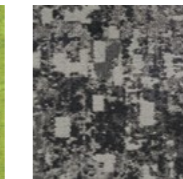
Bamboo  
T711  
P 41



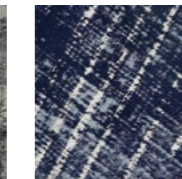
Blossom  
T712  
P 41



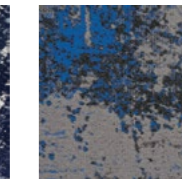
Vintage  
T716  
P 43



Sq Cloud  
T717  
P 44



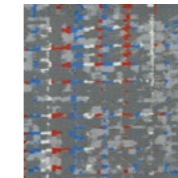
Weave Plus  
T718  
P 45



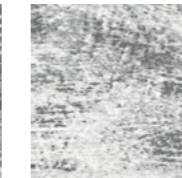
Free Form  
T719  
P 46



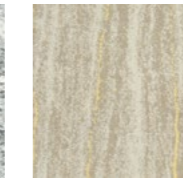
Crystalline  
T721  
P 47



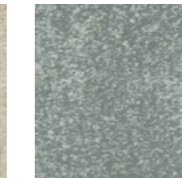
Times Square  
T722  
P 48



1933 Shanghai  
T723  
P 49



Forest View  
T726  
P 51



Petrichor  
T728  
P 52



Moonwalk  
T725  
P 50



Marble V261  
P 53



Porcelain V263  
P 54



Formations - V271  
P 55



Formations - V272  
P 55



Formations - V273  
P 55





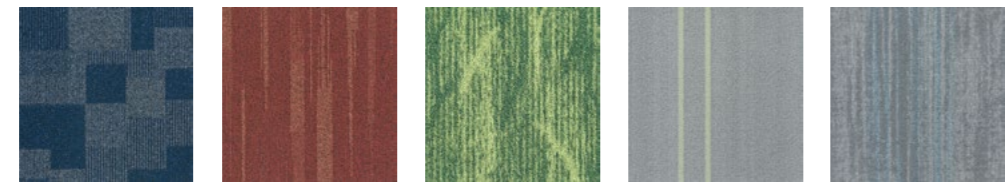
Linen T102 P 63  
 Milano T103 P 65  
 Pulse T105 P 66  
 Light Chaser T106 P 67  
 ReGenerate T108 P 68



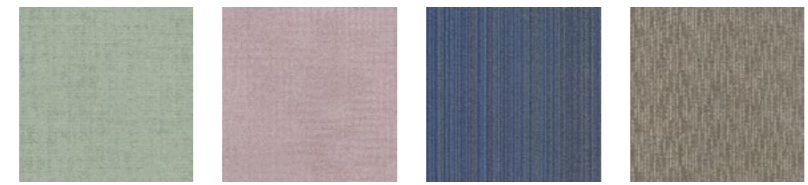
Circuit T613 P 69  
 Criss-cross T617 P 70  
 Spectrum T629 P 71  
 Sonic T637 P 72  
 Pick Up Sticks T657 P 73



Classic Track T660 P 75  
 Track Line T661 P 75  
 Bayou T662 P 77  
 Skate T663 P 78  
 Granite T665 P 79



Shadow T670 P 80  
 In-motion T671 P 81  
 Banyan T672 P 82  
 Time T673 P 83  
 Glacier T675 P 84



Natural Charm T676 P 85  
 Lake Hues T677 P 86  
 Track Connection T690 P 75  
 Woodland T692 P 87

# 02

## Premium Line

Premium 是为室内空间和专业客户打造的诚意之作。它汇聚了集美学价值、实用性和可持续性于一体的高端优质产品，受到广大客户的青睐。

Premium is a sincere work created for indoor spaces and professional clients. It is a collection of high-end and high-quality products that combine aesthetic value, practicality, and sustainability, favored by a large number of customers.





# 01

# PRESTIGE LINE

优雅设计，高端工艺，奏响空间交响曲  
High-end quality carpets with exclusive designs for luxurious spaces



Green Field	LC05	29
Field of Dreams	LC06	30
Autumn Peak	LC07	31
Bouquet	LC08	33
Torrent	T601	35
Bird's-eye on Metro	T700	36
Space Cloud	T707	37
Color Dew	T708	38
Flagstone	T709	39
Base	T710	41
Bamboo	T711	41
Blossom	T712	41
Vintage	T716	43
Sq Cloud	T717	44
Weave Plus	T718	45
Free Form	T719	46
Crystalline	T721	47
Times Square	T722	48
1933 Shanghai	T723	49
Moonwalk	T725	50
Forest View	T726	51
Petrichor	T728	52
Marble	V261	53
Porcelain	V263	54
Pastoral	V271	55
Industrial	V272	55
Formations	V273	55



# TUNTEX PRESTIGE FOR LUXURY SPACES

Tuntex 高端地毯系列奢华空间首选

地面犹如一面镜子能映射出空间的氛围，而地毯的优雅之美能为空间构建更多人文雅趣。  
Tuntex Prestige 是东帝士艺术、设计与工艺的集大成产品，使用高端工艺，创造更美观、安全和健康的室内环境。

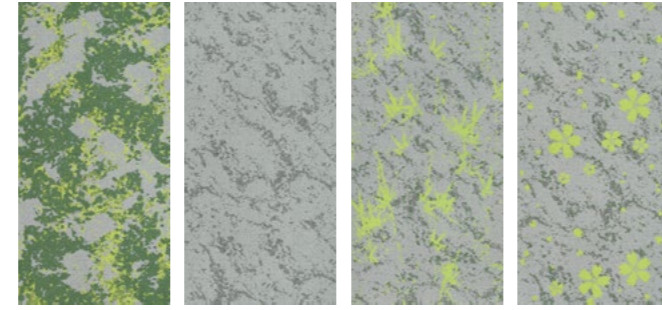
Flooring reflects the space ambiance like a mirror, and the carpet with elegant beauty can bring more aesthetic and cultural presence. Tuntex Prestige is the culmination of our art, design, and expertise, using high-end craftsmanship to create a more pleasing, safe, and healthy indoor environment.





LC0510 / LC0511 Herringbone

## LC05 GREEN FIELD



LC0503  
Moss

LC0510  
Base

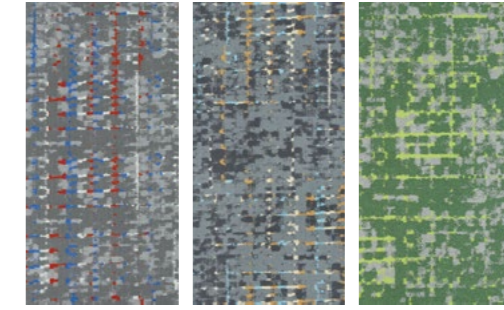
LC0511  
Bamboo

LC0512  
Blossom



LC0604 Ashlar

## LC06 FIELD OF DREAMS



LC0604  
Fantasy

LC0605  
Reverie

LC0609  
Fairyland



**Face Yarn 纤维成分:** nexlon™ Premium Solution Dyed Nylon featured with aircell  
耐可隆原着染尼龙 含 aircell 空灵纱

**Construction 毯面结构:** Multi Hi / Lo Loop 多段高低圈绒

**Pile Height 织毯毛高:** 7.0 - 5.0 mm

**Tile Size 成品规格:** 500 mm x 1000 mm

**Standard Backing 标准化附底:** LUXCUSHION™ 莱适软底

**Foot Traffic 流量级别:** Heavy

**Treatment 附加工艺:** STAINSHIELD™ 特殊防污处理 SOILGUARD™ 特殊防尘处理  
ECOFRESH™ 空气净化功能 MICROSHIELD™ 抗菌功能

**Face Yarn 纤维成分:** nexlon™ Premium Solution Dyed Nylon  
耐可隆原着染尼龙

**Construction 毯面结构:** Multi Hi / Lo Loop 多段高低圈绒

**Pile Height 织毯毛高:** 9.0 - 4.5 mm

**Tile Size 成品规格:** 500 mm x 1000 mm

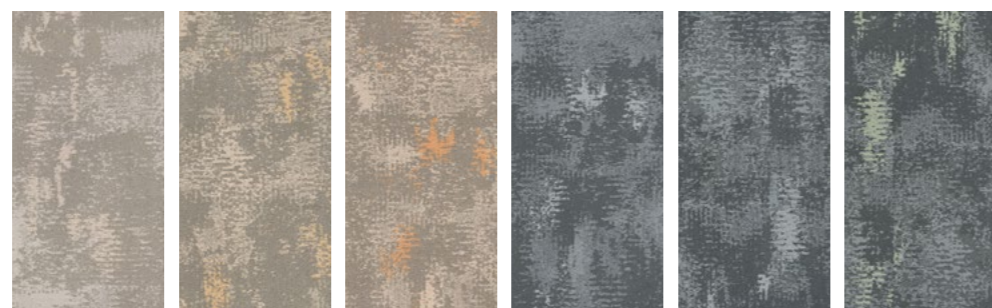
**Standard Backing 标准化附底:** LUXCUSHION™ 莱适软底

**Foot Traffic 流量级别:** Heavy

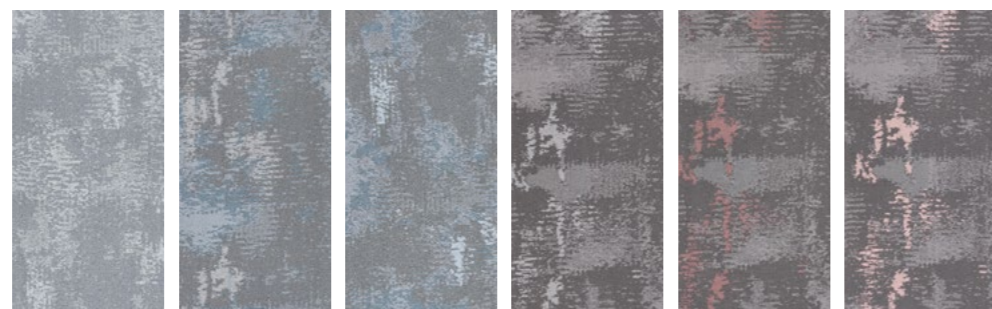
**Treatment 附加工艺:** STAINSHIELD™ 特殊防污处理 SOILGUARD™ 特殊防尘处理  
ECOFRESH™ 空气净化功能 MICROSHIELD™ 抗菌功能



# LC07 AUTUMN PEAK



LC0701 Maple Basic    LC0702 Maple    LC0703 Maple Peak    LC0704 Pine Basic    LC0705 Pine    LC0706 Pine Peak



LC0707 Salvia Basic    LC0708 Salvia    LC0709 Salvia Peak    LC0710 Acer Basic    LC0711 Acer    LC0712 Acer Peak



**Face Yarn 纤维成分:** nexlon™ Premium Solution Dyed Nylon  
耐可隆原着染尼龙

**Construction 毯面结构:** Multi Hi / Lo Loop 多段高低圈绒

**Pile Height 织毯毛高:** 7.5 - 3.0 mm

**Tile Size 成品规格:** 500 mm x 1000 mm

**Standard Backing 标准化附底:** LUXCUSHION™ 莱适软底

**Foot Traffic 流量级别:** Heavy

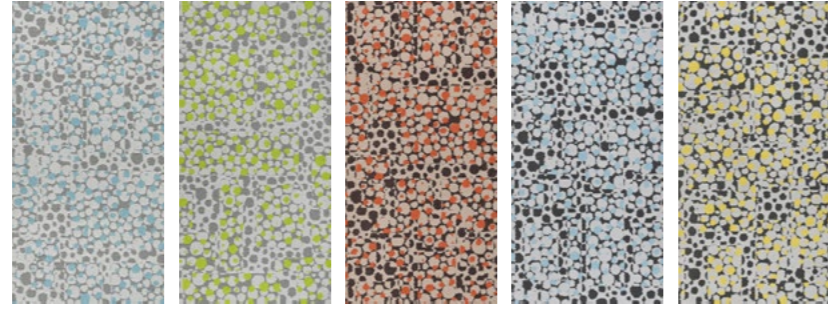
**Treatment 附加工艺:** STAINSHIELD™ 特殊防污处理    SOILGUARD™ 特殊防尘处理  
ECO FRESH™ 空气净化功能    MICROSHIELD™ 抗菌功能



LC0710 / LC0711 / LC0712 Ashlar



# LC08 BOUQUET



LC0801  
Bluebell

LC0802  
Olive Leaf

LC0803  
Marigold

LC0804  
Blue Orchid

LC0805  
Daisy



Face Yarn 纤维成分:

nexlon™ Premium Solution Dyed Nylon

耐可隆原着染尼龙

Construction 毯面结构:

Multi Hi / Lo Loop 多段高低圈绒

Pile Height 织毯毛高:

7.5 - 3.5 mm

Tile Size 成品规格:

500 mm x 1000 mm

Standard Backing 标准化附底:

LUXCUSHION™ 莱适软底

Foot Traffic 流量级别:

Heavy

Treatment 附加工艺:

STAINSHIELD™ 特殊防污处理

SOILGUARD™ 特殊防尘处理

ECOFRESH™ 空气净化功能

MICROSHIELD™ 抗菌功能

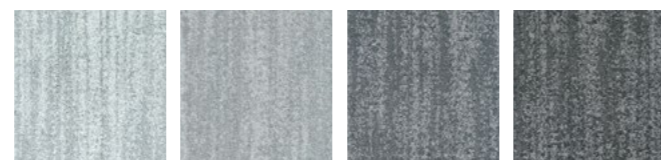


LC0803 Ashlar





## T601 TORRENT



T60101 Cloud    T60107 Shadow    T60102 Slate    T60103 Pebble



T60104 Sand Dollar    T60105 Grey    T60106 Umber

T60105 Brick

**Face Yarn 纤维成分:** nexlon™ Premium Solution Dyed Nylon  
耐可隆原着染尼龙

**Construction 毯面结构:** High Cut Low Loop 高割低圈

**Pile Height 织毯毛高:** 8.0 / 5.0 mm

**Tile Size 成品规格:** 500 mm x 500 mm

**Standard Backing 标准化附底:** TUNTEX Duraback

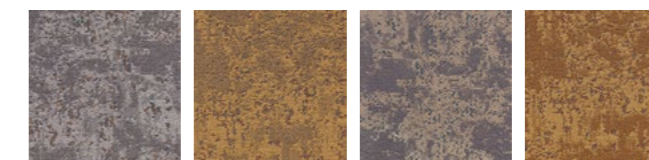
**Foot Traffic 流量级别:** Moderate

**Treatment 附加工艺:** **STAINSHIELD™** 特殊防污处理    **SOILGUARD™** 特殊防尘处理



T7006 Brick

## T700 BIRD'S-EYE ON METRO



T7001 Mist    T7002 Landmark    T7003 Urban Jungle    T7004 Corner



T7005 Night Shadow    T7006 Watertown    T7008 Forbidden City

**Face Yarn 纤维成分:** nexlon™ Premium Solution Dyed Nylon  
耐可隆原着染尼龙

**Construction 毯面结构:** Multi Hi / Lo Loop 多段高低圈绒

**Pile Height 织毯毛高:** 5.5 - 3.5 mm

**Tile Size 成品规格:** 500 mm x 500 mm

**Standard Backing 标准化附底:** TUNTEX Duraback

**Foot Traffic 流量级别:** Heavy

**Treatment 附加工艺:** **STAINSHIELD™** 特殊防污处理    **SOILGUARD™** 特殊防尘处理  
**ECOFRESH™** 空气净化功能    **MICROSHIELD™** 抗菌功能





T7071 Quarter-Turn

## T707 SPACE CLOUD



T7071  
Saturn

T7072  
Tornado

T7073  
Jupiter



T7074  
Lime Halo

T7075  
Mars

T7077  
Aurora



T7081 Ashlar

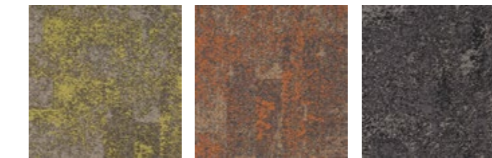
## T708 COLOR DEW



T7081  
Chocolate

T7082  
Crystal

T7083  
Espresso



T7084  
Green Apple

T7085  
Blaze Orange

T7086  
Smokey

**Face Yarn 纤维成分:** nexlon™ Premium Solution Dyed Nylon  
耐可隆原着染尼龙

**Construction 毯面结构:** Multi Hi / Lo Loop 多段高低圈绒

**Pile Height 织毯毛高:** 5.0 - 3.0 mm

**Tile Size 成品规格:** 500 mm x 500 mm

**Standard Backing 标准化附底:** TUNTEX Duraback

**Foot Traffic 流量级别:** Heavy

**Treatment 附加工艺:** **STAINSHIELD™** 特殊防污处理 **SOILGUARD™** 特殊防尘处理  
**ECOFRESH™** 空气净化功能 **MICROSHIELD™** 抗菌功能

**Face Yarn 纤维成分:** nexlon™ Premium Solution Dyed Nylon featured with quartz  
耐可隆原着染尼龙 含 quartz 石英纱

**Construction 毯面结构:** Multi Hi / Lo Loop 多段高低圈绒

**Pile Height 织毯毛高:** 5.0 - 3.0 mm

**Tile Size 成品规格:** 500 mm x 500 mm

**Standard Backing 标准化附底:** TUNTEX Duraback

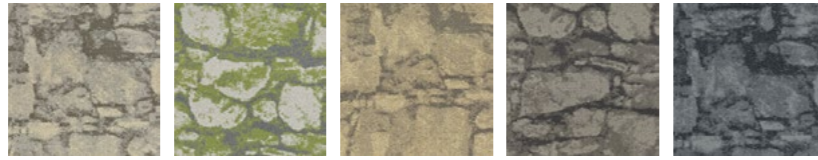
**Foot Traffic 流量级别:** Heavy

**Treatment 附加工艺:** **STAINSHIELD™** 特殊防污处理 **SOILGUARD™** 特殊防尘处理  
**ECOFRESH™** 空气净化功能 **MICROSHIELD™** 抗菌功能



# T709 FLAGSTONE

L



T709L01  
Limestone

T709L02  
Moss

T709L03  
Plateau

T709L04  
Phlogopite

T709L05  
Gabbro

S



T709S01  
Limestone

T709S02  
Moss

T709S03  
Plateau

T709S04  
Phlogopite

T709S05  
Gabbro



Face Yarn 纤维成分:

nexlon™ Premium Solution Dyed Nylon  
耐可隆原着染尼龙

Construction 毯面结构:

Multi Hi / Lo Loop 多段高低圈绒

Pile Height 织毯毛高:

6.5 - 3.0 mm

Tile Size 成品规格:

500 mm x 500 mm

Standard Backing 标准化附底:

TUNTEX Duraback

Foot Traffic 流量级别:

Heavy

Treatment 附加工艺:

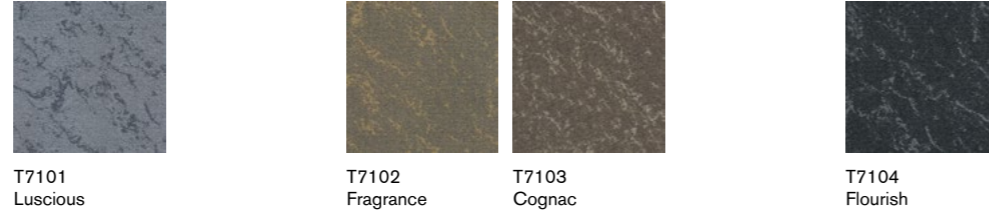
**STAINSHIELD™** 特殊防污处理 **SOILGUARD™** 特殊防尘处理  
**ECOFRESH™** 空气净化功能 **MICROSHIELD™** 抗菌功能



T709L04 / T709S04 Ashlar

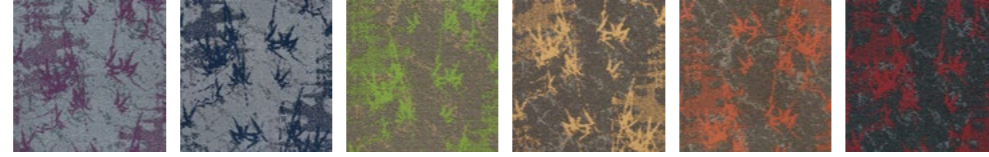


## T710 BASE

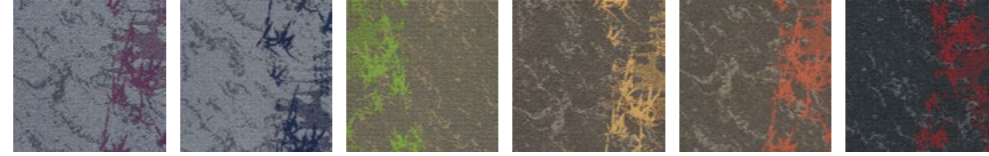


## T711 BAMBOO

全花图案  
full pattern

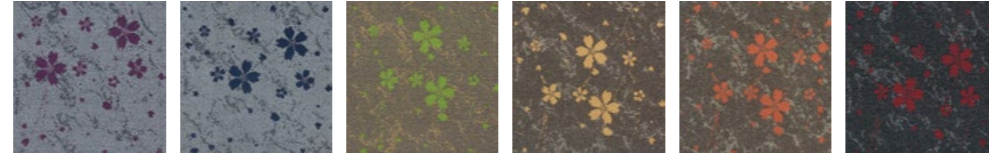


半花图案  
half pattern

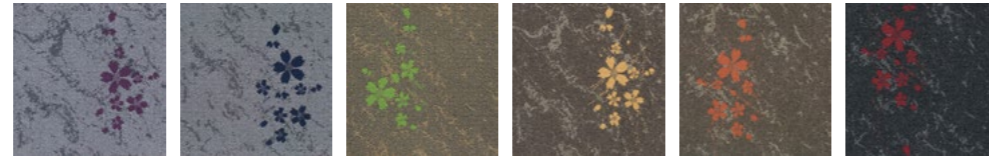


## T712 BLOSSOM

全花图案  
full pattern



半花图案  
half pattern



Face Yarn 纤维成分:

nexlon™ Premium Solution Dyed Nylon

耐可隆原着染尼龙

Construction 毯面结构:

Multi Hi / Lo Loop 多段高低圈绒

Pile Height 织毯毛高:

6.0 - 4.0 mm

Tile Size 成品规格:

500 mm x 500 mm

Standard Backing 标准化附底:

TUNTEX Duraback

Foot Traffic 流量级别:

Heavy

Treatment 附加工艺:

STAINSHIELD™ 特殊防污处理 SOILGUARD™ 特殊防尘处理

ECOFRESH™ 空气净化功能 MICROSHIELD™ 抗菌功能

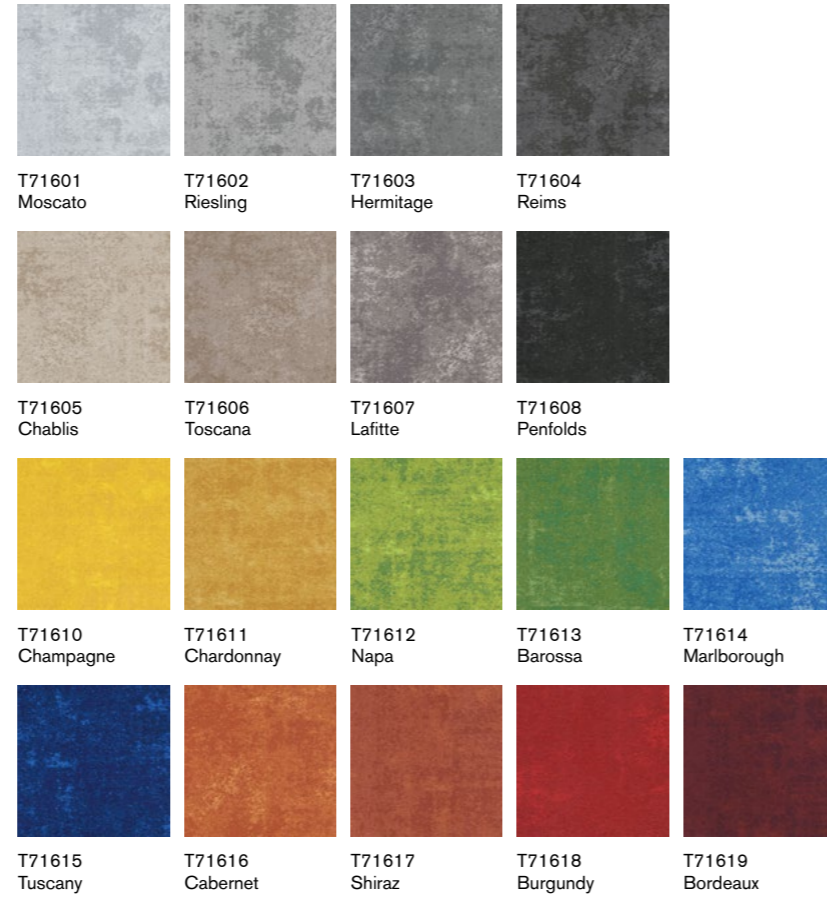


T7104 / T711X45 / T711Y45 Brick





## T716 VINTAGE



T71605 / T71606 / T71611 / T71612 Quarter-Turn

**Face Yarn 纤维成分:** Universal Fiber Solution Dyed Nylon  
环球尼龙纱

**Construction 毯面结构:** Multi Hi / Lo Loop 多段高低圈绒

**Pile Height 织毯毛高:** 6.0 - 3.5 mm

**Tile Size 成品规格:** 500 mm x 500 mm

**Standard Backing 标准化附底:** TUNTEX Duraback

**Foot Traffic 流量级别:** Heavy

**Treatment 附加工艺:** **STAINSHIELD™** 特殊防污处理 **SOILGUARD™** 特殊防尘处理  
**ECOFRESH™** 空气净化功能 **MICROSHIELD™** 抗菌功能



## T717 SQ CLOUD



T71705 / T71706 Ashlar

**Face Yarn 纤维成分:** nexlon™ Premium Solution Dyed Nylon featured with quartz  
耐可隆原着染尼龙 含 quartz 石英纱

**Construction 毯面结构:** Multi Hi / Lo Loop 多段高低圈绒

**Pile Height 织毯毛高:** 4.0 - 2.5 mm

**Tile Size 成品规格:** 500 mm x 500 mm

**Standard Backing 标准化附底:** TUNTEX Duraback

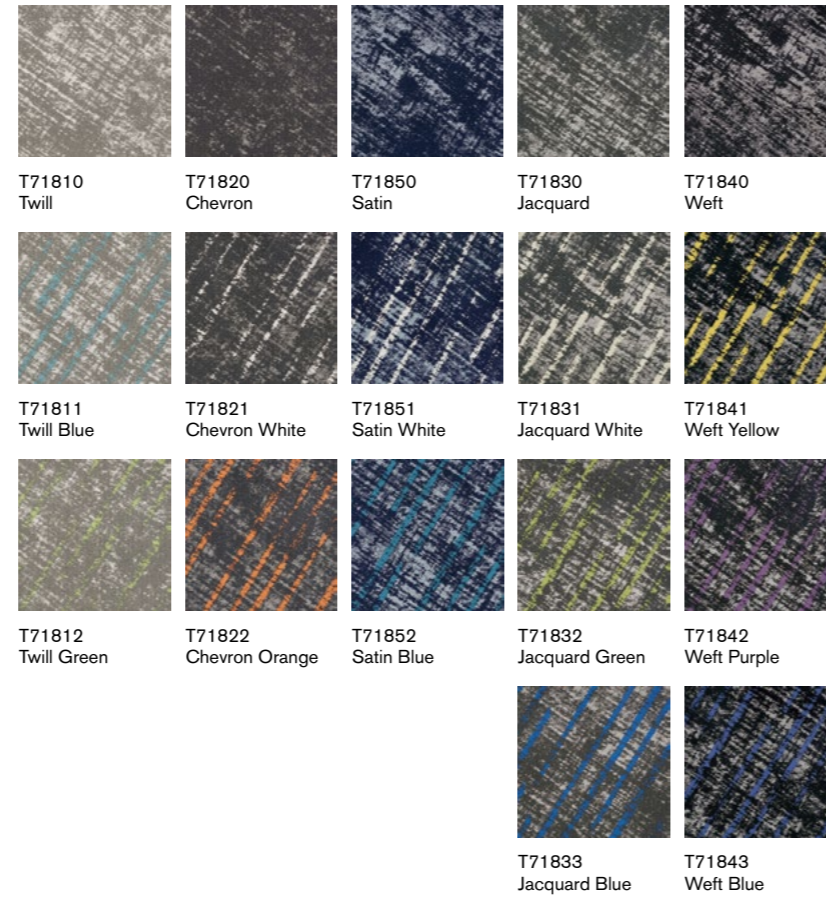
**Foot Traffic 流量级别:** Heavy

**Treatment 附加工艺:** **STAINSHIELD™** 特殊防污处理 **SOILGUARD™** 特殊防尘处理  
**ECOFRESH™** 空气净化功能 **MICROSHIELD™** 抗菌功能

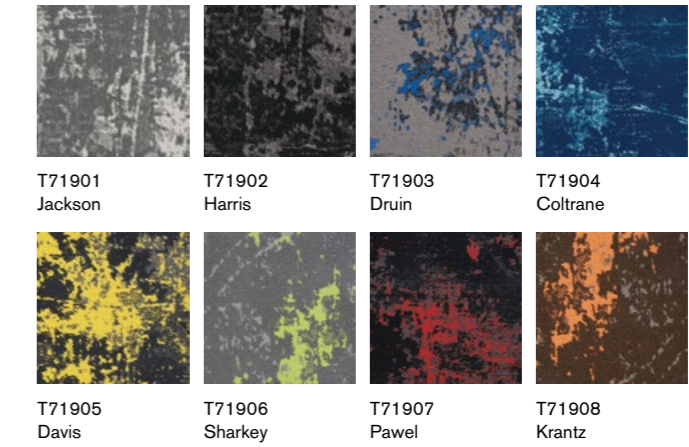




## T718 WEAVE PLUS



## T719 FREE FORM



**Face Yarn 纤维成分:** nexlon™ Premium Solution Dyed Nylon  
耐可隆原着染尼龙

**Construction 毯面结构:** Multi Hi / Lo Loop 多段高低圈绒

**Pile Height 织毯毛高:** 5.5 - 3.0 mm

**Tile Size 成品规格:** 500 mm x 500 mm

**Standard Backing 标准化附底:** TUNTEX Duraback

**Foot Traffic 流量级别:** Heavy

**Treatment 附加工艺:** **STAINSHIELD™** 特殊防污处理 **SOILGUARD™** 特殊防尘处理  
**ECOFRESH™** 空气净化功能 **MICROSHIELD™** 抗菌功能

**Face Yarn 纤维成分:** nexlon™ Premium Solution Dyed Nylon  
耐可隆原着染尼龙

**Construction 毯面结构:** Multi Hi / Lo Loop 多段高低圈绒

**Pile Height 织毯毛高:** 5.5 - 3.5 mm

**Tile Size 成品规格:** 500 mm x 500 mm

**Standard Backing 标准化附底:** TUNTEX Duraback

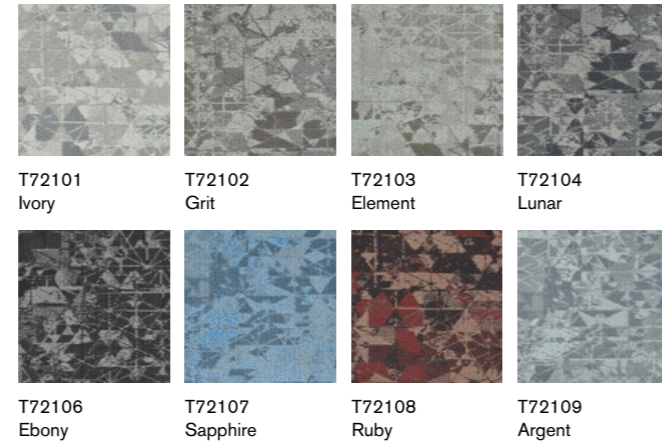
**Foot Traffic 流量级别:** Heavy

**Treatment 附加工艺:** **STAINSHIELD™** 特殊防污处理 **SOILGUARD™** 特殊防尘处理  
**ECOFRESH™** 空气净化功能 **MICROSHIELD™** 抗菌功能





## T721 CRYSTALLINE



T72101 / T72102 Brick

**Face Yarn 纤维成分:** nexlon™ Premium Solution Dyed Nylon featured with quartz  
耐可隆原着染尼龙 含 quartz 石英纱

**Construction 毯面结构:** Multi Hi / Lo Loop 多段高低圈绒

**Pile Height 织毯毛高:** 5.0 - 3.0 mm

**Tile Size 成品规格:** 500 mm x 500 mm

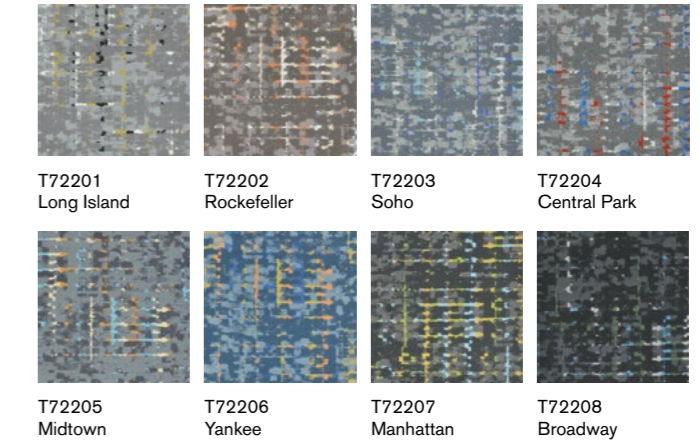
**Standard Backing 标准化附底:** TUNTEX Duraback

**Foot Traffic 流量级别:** Heavy

**Treatment 附加工艺:** **STAINSHIELD™** 特殊防污处理 **SOILGUARD™** 特殊防尘处理  
**ECOFRESH™** 空气净化功能 **MICROSHIELD™** 抗菌功能



## T722 TIMES SQUARE



T72208 Quarter-Turn

**Face Yarn 纤维成分:** nexlon™ Premium Solution Dyed Nylon  
耐可隆原着染尼龙

**Construction 毯面结构:** Multi Hi / Lo Loop 多段高低圈绒

**Pile Height 织毯毛高:** 9.0 - 4.5 mm

**Tile Size 成品规格:** 500 mm x 500 mm

**Standard Backing 标准化附底:** TUNTEX Duraback

**Foot Traffic 流量级别:** Heavy

**Treatment 附加工艺:** **STAINSHIELD™** 特殊防污处理 **SOILGUARD™** 特殊防尘处理  
**ECOFRESH™** 空气净化功能 **MICROSHIELD™** 抗菌功能





## T723 1933 SHANGHAI



**Face Yarn 纤维成分:** Universal Fiber Solution Dyed Nylon (including Bio-based Content)  
 环球尼龙纱 (含生物源纤维)

**Construction 毯面结构:** Multi Hi / Lo Loop 多段高低圈绒

**Pile Height 织毯毛高:** 5.0 - 3.0 mm

**Tile Size 成品规格:** 500 mm x 500 mm

**Standard Backing 标准化附底:** TUNTEX Duraback

**Foot Traffic 流量级别:** Heavy

**Treatment 附加工艺:** **STAINSHIELD™** 特殊防污处理 **SOILGUARD™** 特殊防尘处理  
**ECOFRESH™** 空气净化功能 **MICROSHIELD™** 抗菌功能



## T725 MOONWALK



**Face Yarn 纤维成分:** nexlon™ Premium Solution Dyed Nylon  
 耐可隆原着染尼龙

**Construction 毯面结构:** Multi Hi / Lo Loop with Tip-Shear Finish 多段高低圈绒 - 高圈剪毛

**Pile Height 织毯毛高:** 8.0 - 5.0 mm

**Tile Size 成品规格:** 250 mm x 1000 mm

**Standard Backing 标准化附底:** TUNTEX Duraback

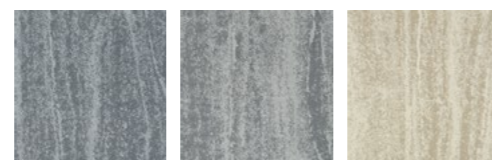
**Foot Traffic 流量级别:** Moderate

**Treatment 附加工艺:** **STAINSHIELD™** 特殊防污处理 **SOILGUARD™** 特殊防尘处理  
**ECOFRESH™** 空气净化功能 **MICROSHIELD™** 抗菌功能

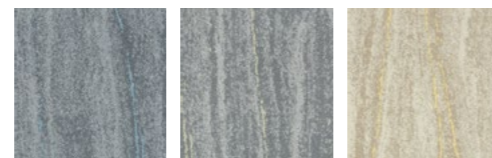




## T726 FOREST VIEW



T72601 Silver Birch  
T72603 White Oak  
T72605 Sprucewood



T72602 Blue Mahoe  
T72604 Yellowheart  
T72606 Osage Orange

T72604 Brick



**Face Yarn 纤维成分:** nexlon™ Premium Solution Dyed Nylon featured with aircell  
耐可隆原着染尼龙 含 aircell 空灵纱

**Construction 毯面结构:** Multi Hi / Lo Loop 多段高低圈绒

**Pile Height 织毯毛高:** 9.0 - 5.0 mm

**Tile Size 成品规格:** 500 mm x 500 mm

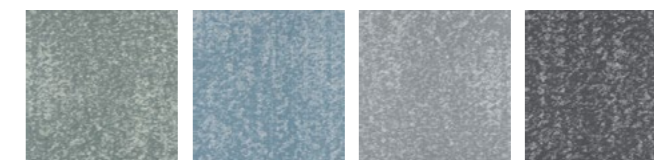
**Standard Backing 标准化附底:** TUNTEX Duraback

**Foot Traffic 流量级别:** Heavy

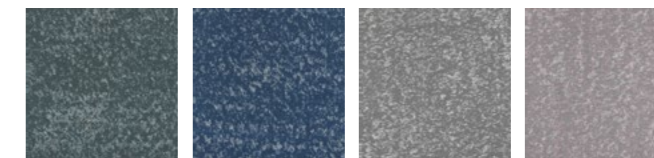
**Treatment 附加工艺:** **STAINSHIELD™** 特殊防污处理 **SOILGUARD™** 特殊防尘处理  
**ECOFRESH™** 空气净化功能 **MICROSHIELD™** 抗菌功能



## T728 PETRICHOR



T72801 Grassy  
T72802 Still Lake  
T72803 White Pebble  
T72804 Plant Ash



T72805 Lichen  
T72806 Blue Hole  
T72807 Drab  
T72808 Clay

T72805 Brick



**Face Yarn 纤维成分:** nexlon™ Premium Solution Dyed Nylon featured with aircell  
耐可隆原着染尼龙 含 aircell 空灵纱

**Construction 毯面结构:** Multi Hi / Lo Loop 多段高低圈绒

**Pile Height 织毯毛高:** 6.5 - 3.0 mm

**Tile Size 成品规格:** 500 mm x 500 mm

**Standard Backing 标准化附底:** TUNTEX Duraback

**Foot Traffic 流量级别:** Heavy

**Treatment 附加工艺:** **STAINSHIELD™** 特殊防污处理 **SOILGUARD™** 特殊防尘处理  
**ECOFRESH™** 空气净化功能 **MICROSHIELD™** 抗菌功能





## V261 MARBLE



V261-1  
Travertine

V261-3  
Mica

V261-4  
Flint



## V263 PORCELAIN



V263 -1  
Magnasite

V263 -2  
Limestone

<b>Product Construction 产品结构:</b>	Solid PVC Luxury Vinyl Tile
<b>Overall Thickness 成品全厚:</b>	5 mm
<b>Size Available 成品规格:</b>	500 mm W x 1000 mm L
<b>Wear Layer Thickness/Type 耐磨层厚度 / 类型:</b>	0.55 mm Solid PVC - Exceeds ASTM F 1700
<b>Anti-Slip Layer 防滑层:</b>	Allows Installation Without Glue 可无胶安装 (Moderate Traffic)
<b>Edge Design 边缘设计:</b>	Microbever
<b>Water Resistance 防水性:</b>	Waterproof 防水
<b>UV-Cured Polyurethane CoatingUV 固化聚氨酯涂层:</b>	X-SHIELD® Polyurethane Coating
<b>Increased Dimensional Stability 尺寸稳定性:</b>	Fiberglass 玻璃纤维
<b>Installation Method 铺装方式:</b>	Loose Lay/Perimeter Adhesion 区域粘胶
<b>Recommended Adhesive 推荐的施工胶:</b>	TX-500

<b>Product Construction 产品结构:</b>	Solid PVC Luxury Vinyl Tile
<b>Overall Thickness 成品全厚:</b>	5 mm
<b>Size Available 成品规格:</b>	500 mm W x 500 mm L
<b>Wear Layer Thickness/Type 耐磨层厚度 / 类型:</b>	0.55 mm Solid PVC - Exceeds ASTM F 1700
<b>Anti-Slip Layer 防滑层:</b>	Allows Installation Without Glue 可无胶安装 (Moderate Traffic)
<b>Edge Design 边缘设计:</b>	Microbever
<b>Water Resistance 防水性:</b>	Waterproof 防水
<b>UV-Cured Polyurethane CoatingUV 固化聚氨酯涂层:</b>	X-SHIELD® Polyurethane Coating
<b>Increased Dimensional Stability 尺寸稳定性:</b>	Fiberglass 玻璃纤维
<b>Installation Method 铺装方式:</b>	Loose Lay/Perimeter Adhesion 区域粘胶
<b>Recommended Adhesive 推荐的施工胶:</b>	TX-500



## V270 FORMATIONS



V271-1  
Birch

V272-2  
Ash

V273-2  
Blackwood



**Product Construction 产品结构:**

**Overall Thickness 成品全厚:**

**Size Available 成品规格:**

**Wear Layer Thickness/Type 耐磨层厚度 / 类型:**

**Anti-Slip Layer 防滑层:**

**Edge Design 边缘设计:**

**Water Resistance 防水性:**

**UV-Cured Polyurethane Coating UV 固化聚氨酯涂层:**

**Increased Dimensional Stability 尺寸稳定性:**

**Installation Method 铺装方式:**

**Recommended Adhesive 推荐的施工胶:**

Solid PVC Luxury Vinyl Tile

5 mm

250 mm W x 1000 mm L

0.55 mm Solid PVC - Exceeds ASTM F 1700

Allows Installation Without Glue 可无胶安装 (Moderate Traffic)

Microbever

Waterproof 防水

X-SHIELD™ Polyurethane Coating

Fiberglass 玻璃纤维

Loose Lay/Perimeter Adhesion 区域粘胶

TX-500

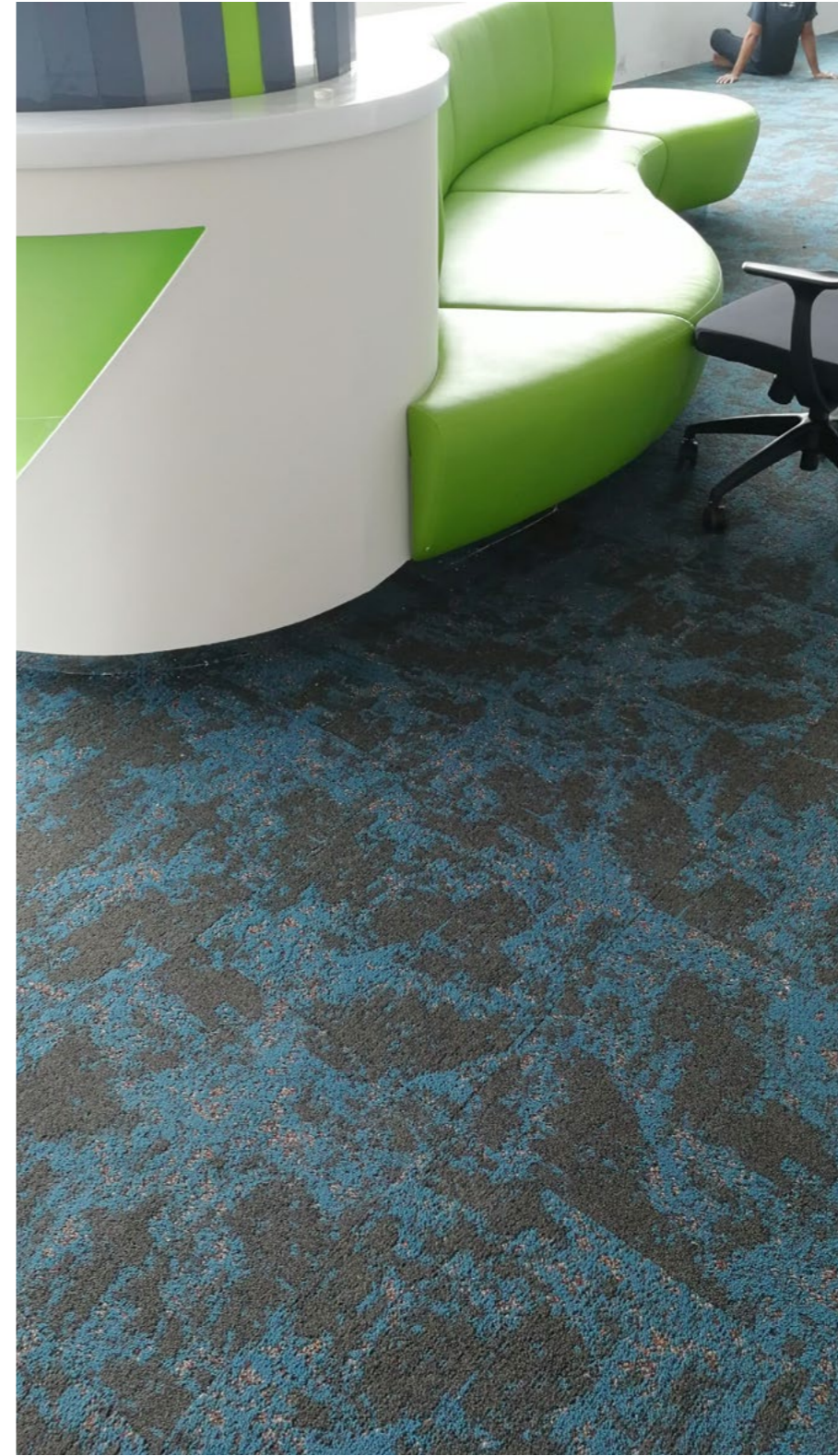


V273-2 / T60102 Ashlar



# SHOWCASES

案例展示





# 02

# PREMIUM LINE

兼具创意、多元与格调，与现代空间相得益彰

Variety of innovative styles and combinations, the best response to contemporary space



Linen	T102	63	Boardwalk	T800	89
Milano	T103	65	Color Zip	T801	90
Pulse	T105	66	City Map	T803	91
Light Chaser	T106	67	Mist	T805	92
ReGenerate	T108	68	Track 25	T806	93
Circuit	T613	69	Sunshower	T807	94
Criss-cross	T617	70	Tassels	T808	95
Spectrum	T629	71	Color Stroke	T809	96
Sonic	T637	72	Abstract	T810	97
Pick Up Sticks	T657	73	Cube	T811	98
Classic Track	T660	75	Expression	T812	99
Track Line	T661	75	Nouvel	T813	100
Bayou	T662	77	Night Falls	T815	101
Skate	T663	78	Immerse	T816	102
Granite	T665	79	Sandscape	T819	103
Shadow	T670	80	Paper Mache	T850	104
In-motion	T671	81	Tetrix	T851	105
Banyan	T672	82	Ripple	T852	106
Time	T673	83	Reflection	T855	107
Glacier	T675	84	Tree Walk	T857	108
Natural Charm	T676	85	Bumblebees	T861	109
Lake Hues	T677	86	Magnetite	T863	110
Track Connection	T690	75	Ice Shards	T871	111
Woodland	T692	87	Tide	T873	112
			Denim	T895	113
			Snowflakes	T896	114



# MODERN AND DIVERSE CHOICES FOR FLOORING DESIGNS

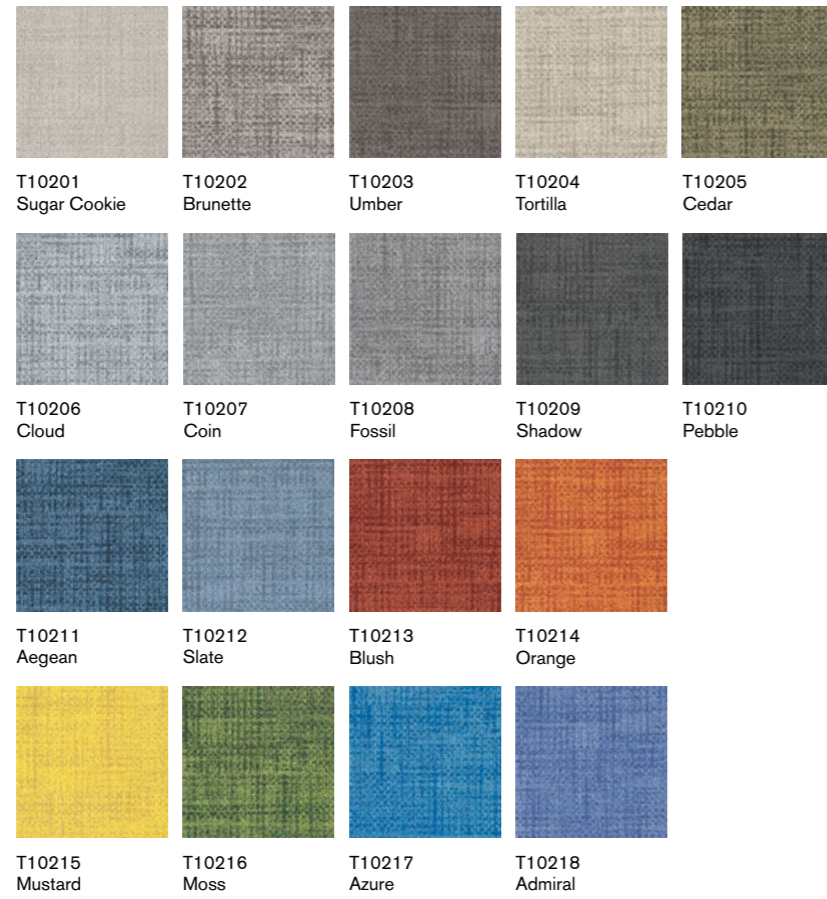
现代而创意多变的设计

优雅，简约与多元化，是东帝士对现代空间的理解。Tuntex Premium 集合了高格调、高品质与高质量的长条毯与方块毯产品，通过不同纹理、颜色与拼花的碰撞，打造兼具创意与格调的空间。

Grace, simplicity, and diversity are our comprehension of modern space. Tuntex Premium is a collection of high-taste and high-quality modular carpets and plank carpets. Mix of different textures, colors, and patterns creates a space with both creativity and style.



# T102 LINEN

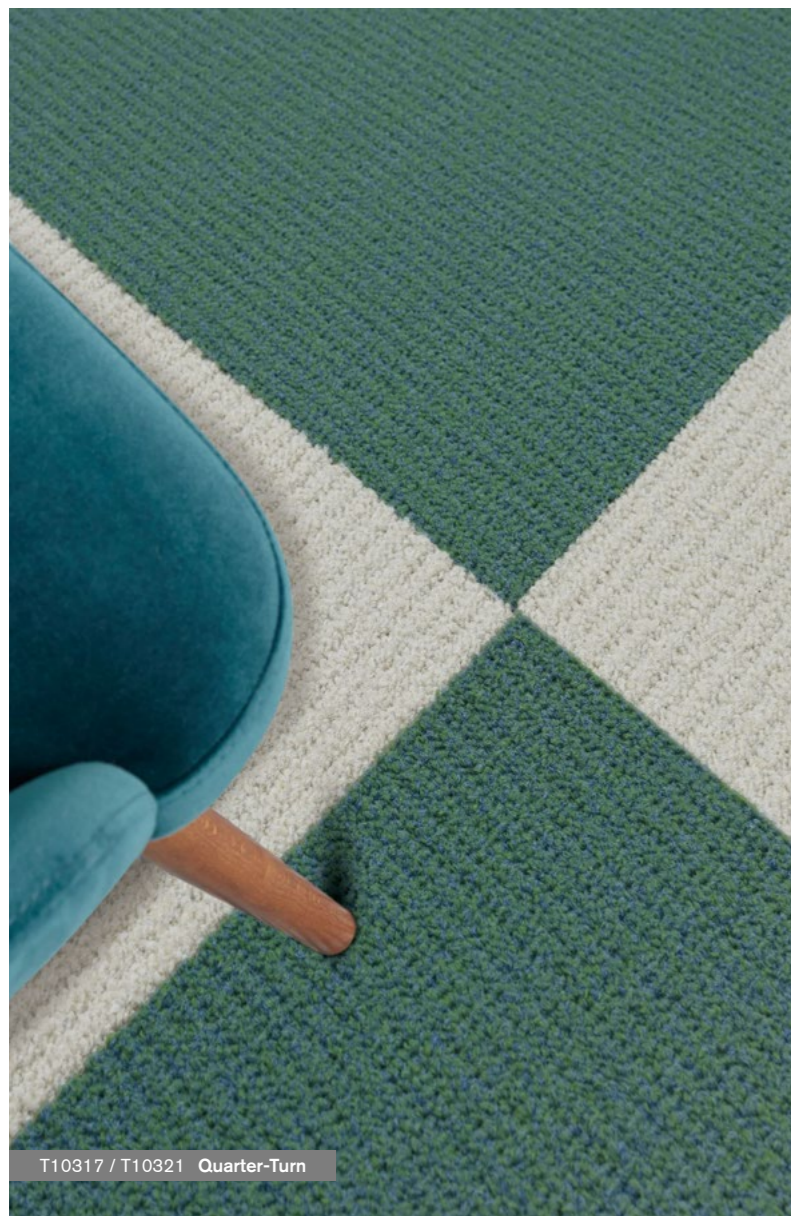


<b>Face Yarn 纤维成分:</b>	nexlon™ Premium Solution Dyed Nylon featured with quartz 耐可隆原着染尼龙 含 quartz 石英纱
<b>Construction 毯面结构:</b>	Hi / Mid / Lo Loop 高中低圈绒
<b>Pile Height 织毯毛高:</b>	5.5 / 4.5 / 3.0 mm
<b>Tile Size 成品规格:</b>	500 mm x 500 mm
<b>Standard Backing 标准化附底:</b>	TUNTEX Duraback
<b>Foot Traffic 流量级别:</b>	Heavy
<b>Treatment 附加工艺:</b>	<b>STAINSHIELD™</b> 特殊防污处理 <b>SOILGUARD™</b> 特殊防尘处理



T10201 / T10202 / T10203 / T10207 / T10208 Brick





## T103 MILANO

Images below are enlarged and represent a section of a full tile only 以下地毯图像为放大显示图像



## T105 PULSE



**Face Yarn 纤维成分:** nexlon™ Premium Solution Dyed Nylon featured with aircell  
耐可隆原着染尼龙 含 aircell 空灵纱

**Construction 毯面结构:** Multi Hi / Lo Loop 高低渐变圈绒

**Pile Height 织毯毛高:** 6.0 - 3.5 mm

**Tile Size 成品规格:** 500 mm x 500 mm

**Standard Backing 标准化附底:** TUNTEX Duraback

**Foot Traffic 流量级别:** Heavy

**Treatment 附加工艺:** STAINSHIELD™ 特殊防污处理 SOILGUARD™ 特殊防尘处理

**Face Yarn 纤维成分:** nexlon™ Premium Solution Dyed Nylon  
耐可隆原着染尼龙

**Construction 毯面结构:** Multi Hi / Lo Loop 高低渐变圈绒

**Pile Height 织毯毛高:** 4.5 - 3.5 mm

**Tile Size 成品规格:** 500 mm x 500 mm

**Standard Backing 标准化附底:** TUNTEX Duraback

**Foot Traffic 流量级别:** Heavy

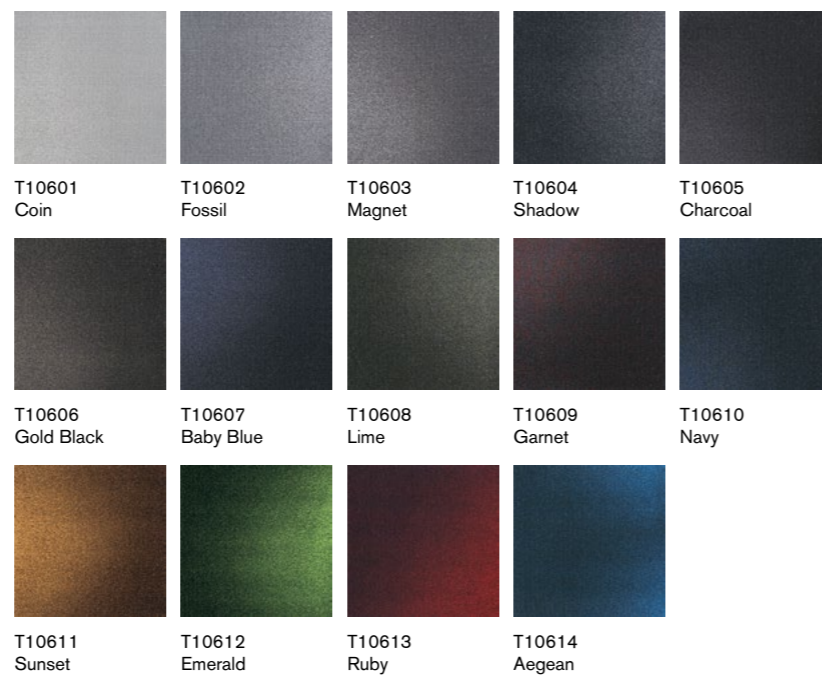
**Treatment 附加工艺:** STAINSHIELD™ 特殊防污处理 SOILGUARD™ 特殊防尘处理





T10602 / T10604 Ashlar

## T106 LIGHT CHASER



T10807 / T10823 / T10825 / T10837 Brick

## T108 REGENERATE



**Face Yarn 纤维成分:** nexlon™ Premium Solution Dyed Nylon featured with quartz  
耐可隆原着染尼龙 含 quartz 石英纱

**Construction 毯面结构:** Multi Hi / Lo Loop 高低渐变圈绒

**Pile Height 织毯毛高:** 5.5 - 3.0 mm

**Tile Size 成品规格:** 500 mm x 500 mm

**Standard Backing 标准化附底:** TUNTEX Duraback

**Foot Traffic 流量级别:** Heavy

**Treatment 附加工艺:** **STAIN SHIELD™** 特殊防污处理 **SOIL GUARD™** 特殊防尘处理

**Face Yarn 纤维成分:** nexlon™ Premium Solution Dyed Nylon  
耐可隆原着染尼龙

**Construction 毯面结构:** Hi / Mid / Lo Loop 高中低圈绒

**Pile Height 织毯毛高:** 5.0 / 4.5 / 3.0 mm

**Tile Size 成品规格:** 500 mm x 500 mm

**Standard Backing 标准化附底:** TUNTEX Duraback

**Foot Traffic 流量级别:** Heavy

**Treatment 附加工艺:** **STAIN SHIELD™** 特殊防污处理 **SOIL GUARD™** 特殊防尘处理



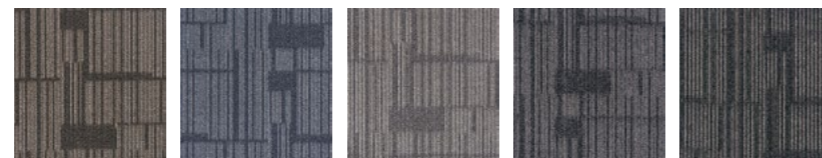


T61303 Brick

## T613 CIRCUIT



T61301 Charcoal    T61302 Taupe    T61303 Ash    T61304 Cedar    T61305 Peanut

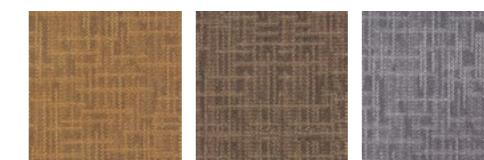


T61306 Hazel    T61307 Slate    T61308 Pewter    T61309 Anchor    T61310 Shadow

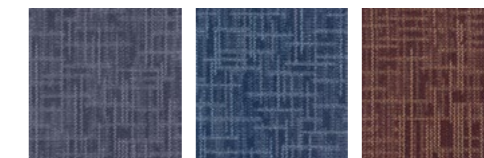


T6173 Ashlar

## T617 CRISS-CROSS



T6171 Peanut    T6172 Cedar    T6173 Fossil



T6174 Anchor    T6175 Spruce    T6176 Syrup

**Face Yarn 纤维成分:** nexlon™ Premium Solution Dyed Nylon  
耐可隆原着染尼龙

**Construction 毯面结构:** Hi / Mid / Lo Loop 高中低圈绒

**Pile Height 织毯毛高:** 5.0 / 4.5 / 3.5 mm

**Tile Size 成品规格:** 500 mm x 500 mm

**Standard Backing 标准化附底:** TUNTEX Duraback

**Foot Traffic 流量级别:** Heavy

**Treatment 附加工艺:** **STAIN SHIELD™** 特殊防污处理 **SOIL GUARD™** 特殊防尘处理

**Face Yarn 纤维成分:** nexlon™ Premium Solution Dyed Nylon  
耐可隆原着染尼龙

**Construction 毯面结构:** Hi / Mid / Lo Loop 高中低圈绒

**Pile Height 织毯毛高:** 6.0 / 4.5 / 3.0 mm

**Tile Size 成品规格:** 500 mm x 500 mm

**Standard Backing 标准化附底:** TUNTEX Duraback

**Foot Traffic 流量级别:** Heavy

**Treatment 附加工艺:** **STAIN SHIELD™** 特殊防污处理 **SOIL GUARD™** 特殊防尘处理





T62905 / T62906 Brick

## T629 SPECTRUM



T63704 / T63714 Ashlar

## T637 SONIC



**Face Yarn 纤维成分:** nexlon™ Premium Solution Dyed Nylon  
耐可隆原着染尼龙

**Construction 毯面结构:** Hi / Mid / Lo Loop 高中低圈绒

**Pile Height 织毯毛高:** 5.0 / 4.0 / 3.0 mm

**Tile Size 成品规格:** 500 mm x 500 mm

**Standard Backing 标准化附底:** TUNTEX Duraback

**Foot Traffic 流量级别:** Heavy

**Treatment 附加工艺:** STAIN SHIELD™ 特殊防污处理 SOIL GUARD™ 特殊防尘处理

**Face Yarn 纤维成分:** nexlon™ Premium Solution Dyed Nylon  
耐可隆原着染尼龙

**Construction 毯面结构:** Multi Hi / Lo Loop 高低渐变圈绒

**Pile Height 织毯毛高:** 4.5 - 3.0 mm

**Tile Size 成品规格:** 500 mm x 500 mm

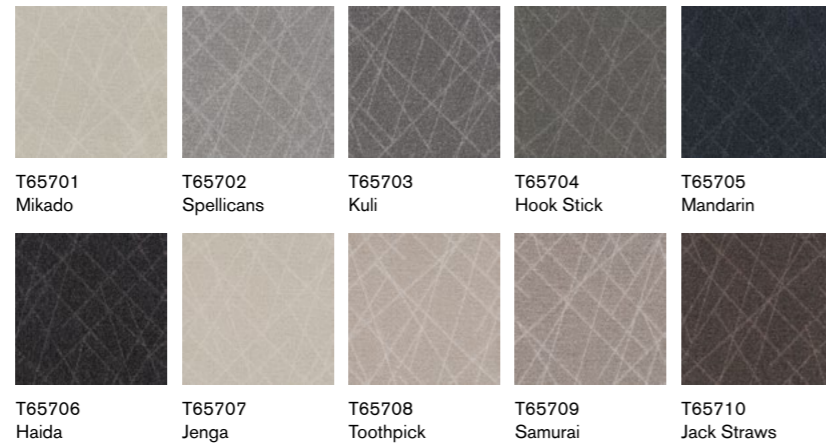
**Standard Backing 标准化附底:** TUNTEX Duraback

**Foot Traffic 流量级别:** Heavy

**Treatment 附加工艺:** STAIN SHIELD™ 特殊防污处理 SOIL GUARD™ 特殊防尘处理



## T657 PICK UP STICKS



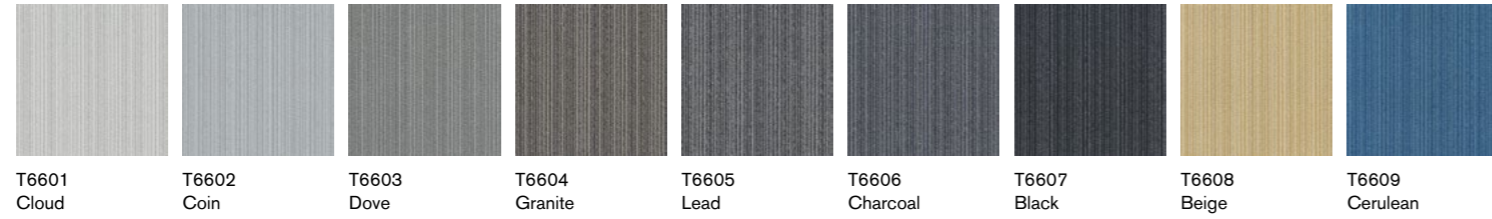
<b>Face Yarn 纤维成分:</b>	nexlon™ Premium Solution Dyed Nylon featured with quartz 耐可隆原着染尼龙 含 quartz 石英纱
<b>Construction 毯面结构:</b>	Hi / Mid / Lo Loop 高中低圈绒
<b>Pile Height 织毯毛高:</b>	5.0 / 4.5 / 3.0 mm
<b>Tile Size 成品规格:</b>	500 mm x 500 mm
<b>Standard Backing 标准化附底:</b>	TUNTEX Duraback
<b>Foot Traffic 流量级别:</b>	Heavy
<b>Treatment 附加工艺:</b>	<b>STAINSHIELD™</b> 特殊防污处理 <b>SOILGUARD™</b> 特殊防尘处理



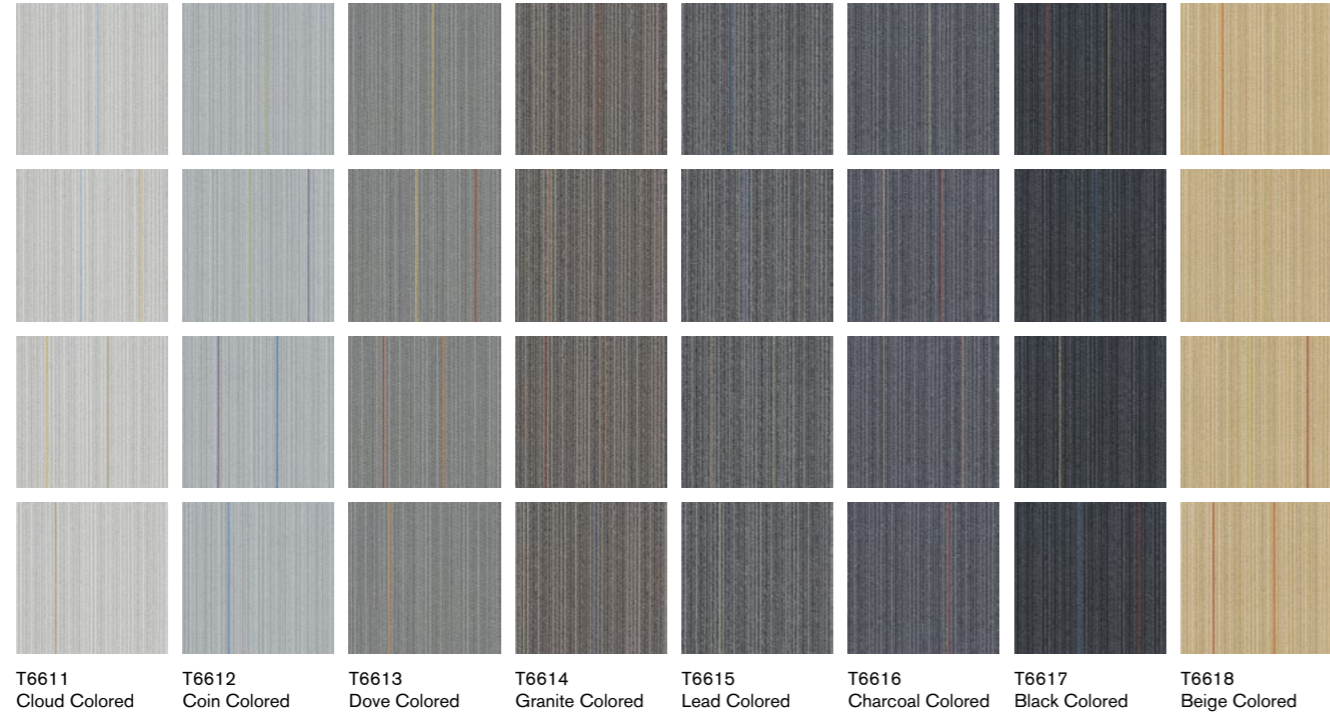
T65702 / T65706 Quarter-Turn



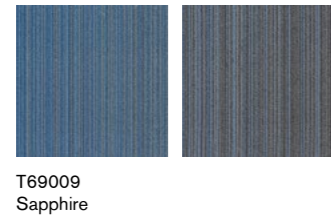
## T660 CLASSIC TRACK



## T661 TRACK LINE



## T690 TRACK CONNE- CTION



<b>Face Yarn 纤维成分:</b>	nexlon™ Premium Solution Dyed Nylon 耐可隆原着染尼龙
<b>Construction 毯面结构:</b>	Hi / Lo Loop 高低圈绒
<b>Pile Height 织毯毛高:</b>	4.0 / 3.5 mm
<b>Tile Size 成品规格:</b>	500 mm x 500 mm
<b>Standard Backing 标准化附底:</b>	TUNTEX Duraback
<b>Foot Traffic 流量级别:</b>	Heavy
<b>Treatment 附加工艺:</b>	<b>STAINSHIELD™</b> 特殊防污处理 <b>SOILGUARD™</b> 特殊防尘处理

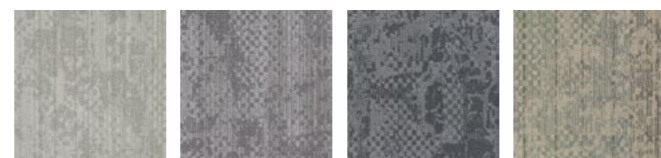


T6607 / T6617 Brick





## T662 BAYOU



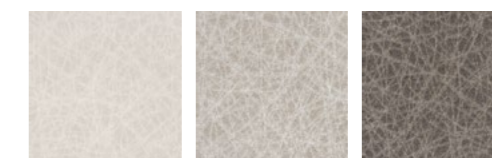
T66201 Louisiana  
T66202 Mississippi  
T66203 Texas  
T66204 Cajun



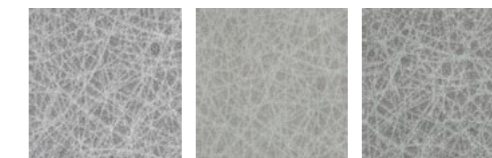
T66205 Creole  
T66206 Everglade  
T66207 Wetlands  
T66208 Crawfish



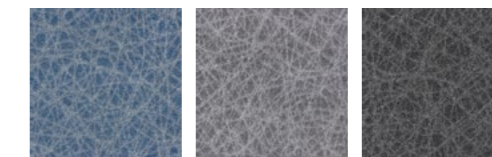
## T663 SKATE



T66301 Sand Dollar  
T66302 Tan  
T66303 Coffee



T66304 Cloud  
T66305 Beige  
T66306 Oat



T66307 Aegean  
T66308 Grey  
T66309 Pebble

**Face Yarn 纤维成分:** nexlon™ Premium Solution Dyed Nylon featured with quartz  
耐可隆原着染尼龙 含 quartz 石英纱

**Construction 毯面结构:** Hi / Mid / Lo Loop 高中低圈绒

**Pile Height 织毯毛高:** 5.5 / 4.5 / 3.0 mm

**Tile Size 成品规格:** 500 mm x 500 mm

**Standard Backing 标准化附底:** TUNTEX Duraback

**Foot Traffic 流量级别:** Heavy

**Treatment 附加工艺:** **STAIN SHIELD™** 特殊防污处理 **SOIL GUARD™** 特殊防尘处理

**Face Yarn 纤维成分:** nexlon™ Premium Solution Dyed Nylon  
耐可隆原着染尼龙

**Construction 毯面结构:** Hi / Mid / Lo Loop 高中低圈绒

**Pile Height 织毯毛高:** 4.5 / 4.0 / 3.0 mm

**Tile Size 成品规格:** 500 mm x 500 mm

**Standard Backing 标准化附底:** TUNTEX Duraback

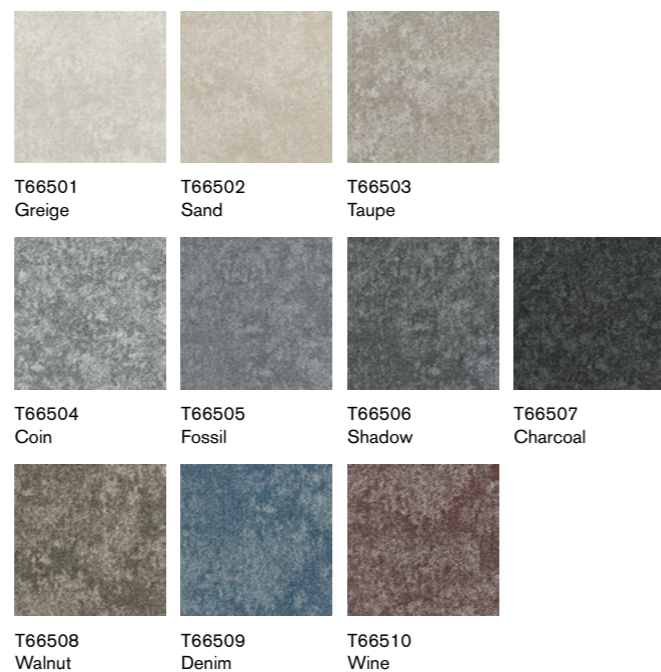
**Foot Traffic 流量级别:** Heavy

**Treatment 附加工艺:** **STAIN SHIELD™** 特殊防污处理 **SOIL GUARD™** 特殊防尘处理





## T665 GRANITE



T66502 / T66503 Brick

**Face Yarn 纤维成分:** nexlon™ Premium Solution Dyed Nylon  
耐可隆原着染尼龙

**Construction 毯面结构:** Multi Hi / Lo Loop 高低渐变圈绒

**Pile Height 织毯毛高:** 5.5 - 3.0 mm

**Tile Size 成品规格:** 500 mm x 500 mm

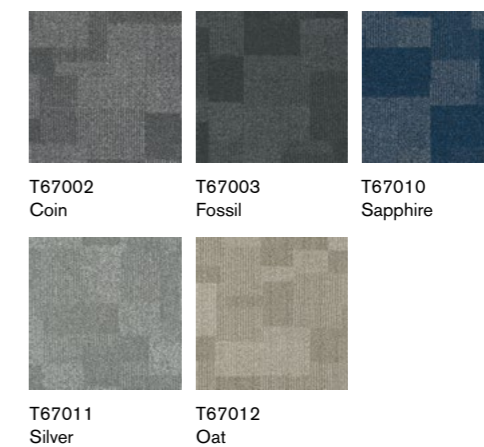
**Standard Backing 标准化附底:** TUNTEX Duraback

**Foot Traffic 流量级别:** Heavy

**Treatment 附加工艺:** **STAINSHIELD™** 特殊防污处理 **SOILGUARD™** 特殊防尘处理



## T670 SHADOW



T67002 Quarter-Turn

**Face Yarn 纤维成分:** nexlon™ Premium Solution Dyed Nylon  
耐可隆原着染尼龙

**Construction 毯面结构:** Hi / Mid / Lo Loop 高中低圈绒

**Pile Height 织毯毛高:** 5.5 / 4.5 / 3.5 mm

**Tile Size 成品规格:** 500 mm x 500 mm

**Standard Backing 标准化附底:** TUNTEX Duraback

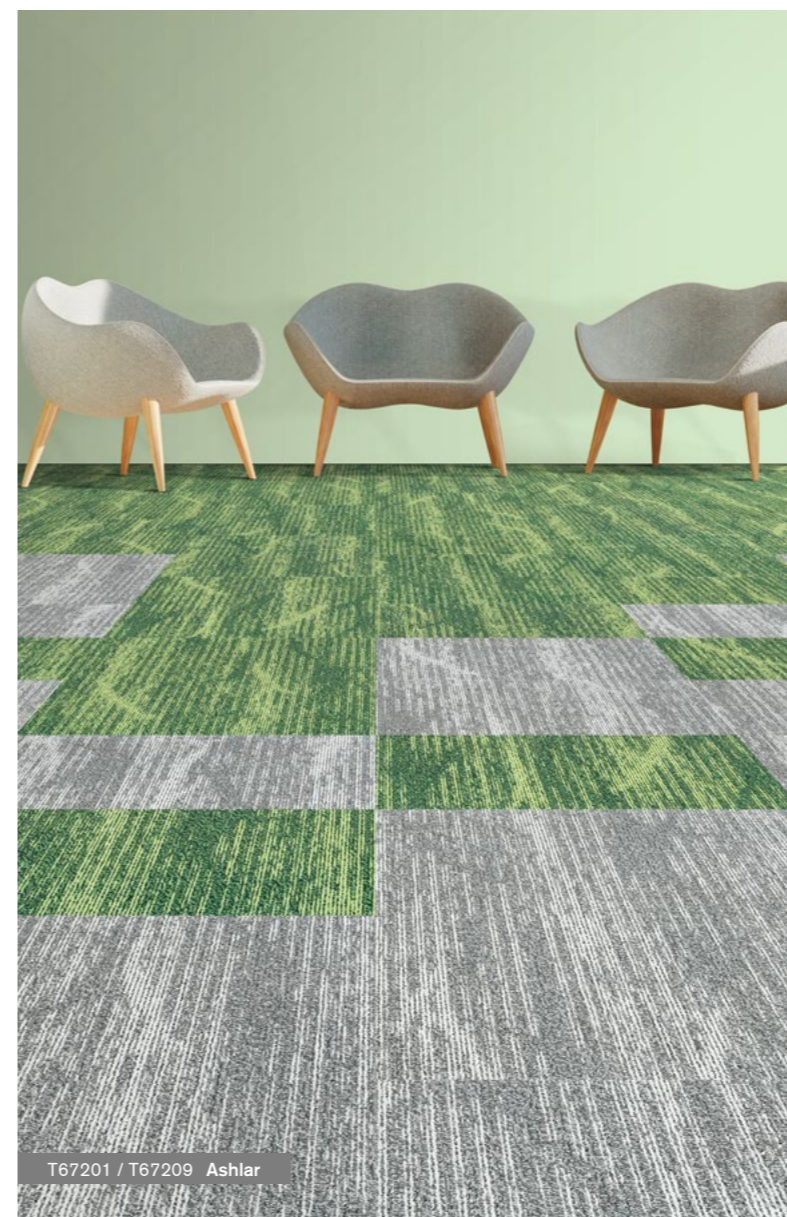
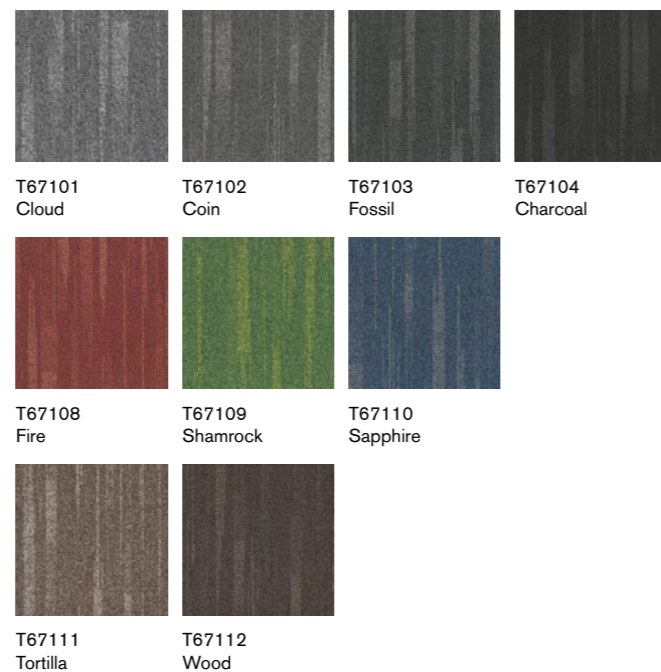
**Foot Traffic 流量级别:** Heavy

**Treatment 附加工艺:** **STAINSHIELD™** 特殊防污处理 **SOILGUARD™** 特殊防尘处理





## T671 IN-MOTION



## T672 BANYAN



**Face Yarn 纤维成分:** nexlon™ Premium Solution Dyed Nylon  
耐可隆原着染尼龙

**Construction 毯面结构:** Hi / Mid / Lo Loop 高中低圈绒

**Pile Height 织毯毛高:** 5.5 / 4.5 / 3.5 mm

**Tile Size 成品规格:** 500 mm x 500 mm

**Standard Backing 标准化附底:** TUNTEX Duraback

**Foot Traffic 流量级别:** Heavy

**Treatment 附加工艺:** **STAINSHIELD™** 特殊防污处理 **SOILGUARD™** 特殊防尘处理

**Face Yarn 纤维成分:** nexlon™ Premium Solution Dyed Nylon featured with quartz  
耐可隆原着染尼龙 含 quartz 石英纱

**Construction 毯面结构:** Hi / Mid / Lo Loop 高中低圈绒

**Pile Height 织毯毛高:** 5.0 / 4.0 / 3.0 mm

**Tile Size 成品规格:** 500 mm x 500 mm

**Standard Backing 标准化附底:** TUNTEX Duraback

**Foot Traffic 流量级别:** Heavy

**Treatment 附加工艺:** **STAINSHIELD™** 特殊防污处理 **SOILGUARD™** 特殊防尘处理





T67311 / T67320 Quarter-Turn

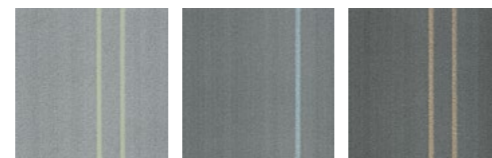
## T673 TIME



T67310  
Cloud

T67320  
Fossil

T67330  
Iron



T67311  
Cloud Green

T67321  
Fossil Blue

T67331  
Iron Yellow



T67513 / T67514 Brick

## T675 GLACIER



T67501  
Oat

T67502  
Hazel Wood

T67503  
Hazelnut

T67504  
Ash



T67505  
Grey

T67506  
Fossil

T67507  
Lead

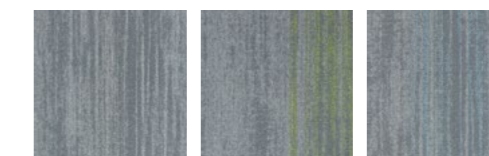
T67508  
Shadow



T67509  
Slate

T67510  
Stone

T67511  
Denim



T67512  
Cloud

T67513  
Pear

T67514  
Sky



**Face Yarn 纤维成分:** nexlon™ Premium Solution Dyed Nylon featured with aircell  
耐可隆原着染尼龙 含 aircell 空灵纱

**Construction 毯面结构:** Multi Hi / Lo Loop 高低渐变圈绒

**Pile Height 织毯毛高:** 6.0 - 4.0 mm

**Tile Size 成品规格:** 500 mm x 500 mm

**Standard Backing 标准化附底:** TUNTEX Duraback

**Foot Traffic 流量级别:** Heavy

**Treatment 附加工艺:** **STAINSHIELD™** 特殊防污处理 **SOILGUARD™** 特殊防尘处理



**Face Yarn 纤维成分:** nexlon™ Premium Solution Dyed Nylon featured with aircell and quartz  
耐可隆原着染尼龙 含 aircell 空灵纱和 quartz 石英纱

**Construction 毯面结构:** Hi / Mid / Lo Loop 高中低圈绒

**Pile Height 织毯毛高:** 6.0 / 5.0 / 3.5 mm

**Tile Size 成品规格:** 500 mm x 500 mm

**Standard Backing 标准化附底:** TUNTEX Duraback

**Foot Traffic 流量级别:** Heavy

**Treatment 附加工艺:** **STAINSHIELD™** 特殊防污处理 **SOILGUARD™** 特殊防尘处理





T67601 / T67606 / T67612 Brick

## T676 NATURAL CHARM

T67601 Cloud	T67604 Stone	T67607 Sage	T67610 Flaxen	T67613 Dove
T67602 Fossil	T67605 Aegean	T67608 Olive	T67611 Apricot	T67614 Blush
T67603 Pebble	T67606 Spruce	T67609 Moss	T67612 Brick	T67615 Denim



T67701 / T67704 Brick

## T677 LAKE HUES

T67701 Pistachio	T67702 Sage	T67703 Olive	T67704 Fossil	T67705 Iron
T67706 Hazel Wood	T67707 Sand Dollar	T67708 Crepe	T67709 Dove	T67710 Cider



<b>Face Yarn 纤维成分:</b>	nexlon™ Premium Solution Dyed Nylon featured with aircell 耐可隆原着染尼龙 含 aircell 空灵纱
<b>Construction 毯面结构:</b>	Hi / Mid / Lo Loop 高中低圈绒
<b>Pile Height 织毯毛高:</b>	6.0 / 5.0 / 4.0 mm
<b>Tile Size 成品规格:</b>	500 mm x 500 mm
<b>Standard Backing 标准化附底:</b>	TUNTEX Duraback
<b>Foot Traffic 流量级别:</b>	Heavy
<b>Treatment 附加工艺:</b>	<b>STAIN SHIELD™</b> 特殊防污处理 <b>SOIL GUARD™</b> 特殊防尘处理



<b>Face Yarn 纤维成分:</b>	nexlon™ Premium Solution Dyed Nylon featured with aircell 耐可隆原着染尼龙 含 aircell 空灵纱
<b>Construction 毯面结构:</b>	Multi Hi / Lo Loop 高低渐变圈绒
<b>Pile Height 织毯毛高:</b>	5.2 - 3.0 mm
<b>Tile Size 成品规格:</b>	500 mm x 500 mm
<b>Standard Backing 标准化附底:</b>	TUNTEX Duraback
<b>Foot Traffic 流量级别:</b>	Heavy
<b>Treatment 附加工艺:</b>	<b>STAIN SHIELD™</b> 特殊防污处理 <b>SOIL GUARD™</b> 特殊防尘处理

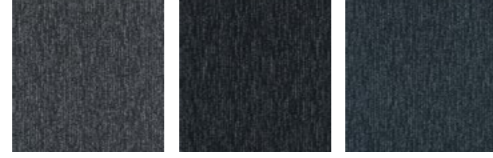


# T692 WOODLAND



T69201  
Hazel Wood

T69202  
Wood



T69203  
Anchor

T69204  
Shadow

T69205  
Spruce



**Face Yarn 纤维成分:**

nexlon™ Premium Solution Dyed Nylon  
耐可隆原着染尼龙

**Construction 毯面结构:**

Hi / Mid / Lo Loop 高中低圈绒

**Pile Height 织毯毛高:**

5.0 / 4.5 / 3.0 mm

**Tile Size 成品规格:**

500 mm x 500 mm

**Standard Backing 标准化附底:**

TUNTEX Duraback

**Foot Traffic 流量级别:**

Heavy

**Treatment 附加工艺:**

**STAINSHIELD™** 特殊防污处理 **SOILGUARD™** 特殊防尘处理



T69201 / T69202 Brick





T8008 Ashlar

## T800 BOARDWALK



T80107 Herringbone

## T801 COLOR ZIP

Images below are enlarged and represent a section of a full tile only 以下地毯图像为放大显示图像



**Face Yarn 纤维成分:** nexlon™ Premium Solution Dyed Nylon  
耐可隆原着染尼龙

**Construction 毯面结构:** Hi / Mid / Lo Loop 高中低圈绒

**Pile Height 织毯毛高:** 6.0 / 4.0 / 3.0 mm

**Tile Size 成品规格:** 250 mm x 1000 mm

**Standard Backing 标准化附底:** TUNTEX Duraback

**Foot Traffic 流量级别:** Heavy

**Treatment 附加工艺:** **STAIN SHIELD™** 特殊防污处理 **SOIL GUARD™** 特殊防尘处理

**Face Yarn 纤维成分:** nexlon™ Premium Solution Dyed Nylon  
耐可隆原着染尼龙

**Construction 毯面结构:** Multi Hi / Lo Loop 高低渐变圈绒

**Pile Height 织毯毛高:** 6.0 - 3.0 mm

**Tile Size 成品规格:** 250 mm x 1000 mm

**Standard Backing 标准化附底:** TUNTEX Duraback

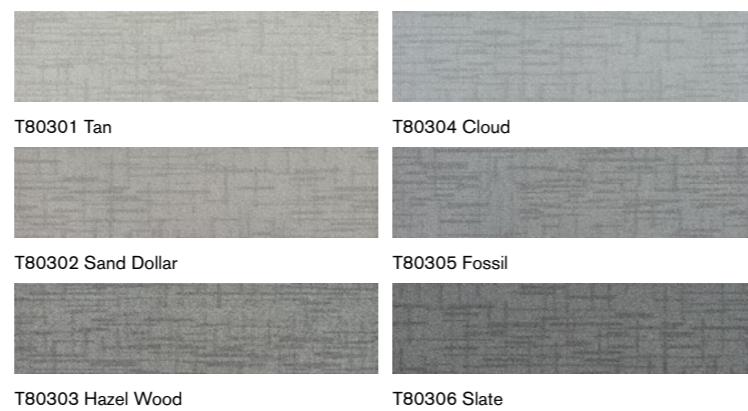
**Foot Traffic 流量级别:** Heavy

**Treatment 附加工艺:** **STAIN SHIELD™** 特殊防污处理 **SOIL GUARD™** 特殊防尘处理





## T803 CITY MAP



T80302 / T80303 Ashlar



## T805 MIST



T80504 / T80508 Ashlar



**Face Yarn 纤维成分:** nexlon™ Premium Solution Dyed Nylon featured with aircell  
 耐可隆原着染尼龙 含 aircell 空灵纱

**Construction 毯面结构:** Hi / Lo Loop 高低圈绒

**Pile Height 织毯毛高:** 5.5 / 3.0 mm

**Tile Size 成品规格:** 250 mm x 1000 mm

**Standard Backing 标准化附底:** TUNTEX Duraback

**Foot Traffic 流量级别:** Heavy

**Treatment 附加工艺:** **STAIN SHIELD™** 特殊防污处理 **SOIL GUARD™** 特殊防尘处理

**Face Yarn 纤维成分:** nexlon™ Premium Solution Dyed Nylon  
 耐可隆原着染尼龙

**Construction 毯面结构:** Multi Hi / Lo Loop 高低渐变圈绒

**Pile Height 织毯毛高:** 5.0 - 3.0 mm

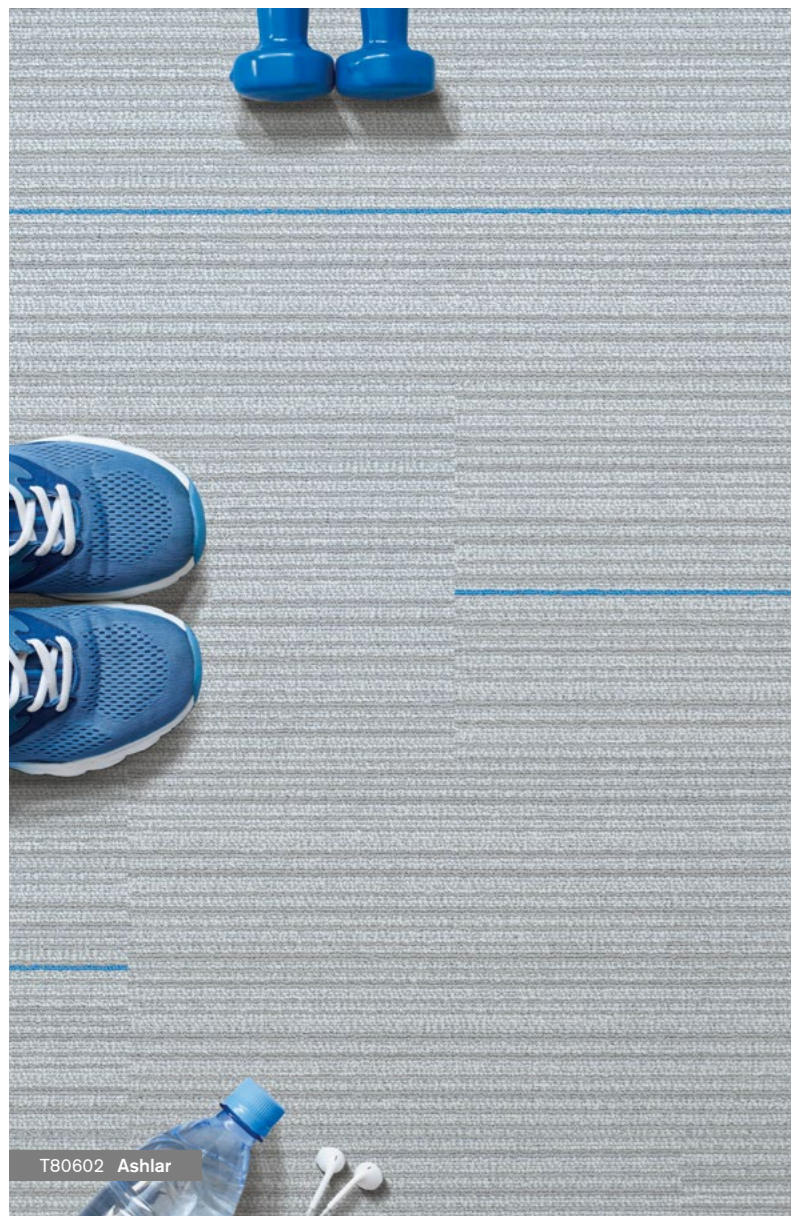
**Tile Size 成品规格:** 250 mm x 1000 mm

**Standard Backing 标准化附底:** TUNTEX Duraback

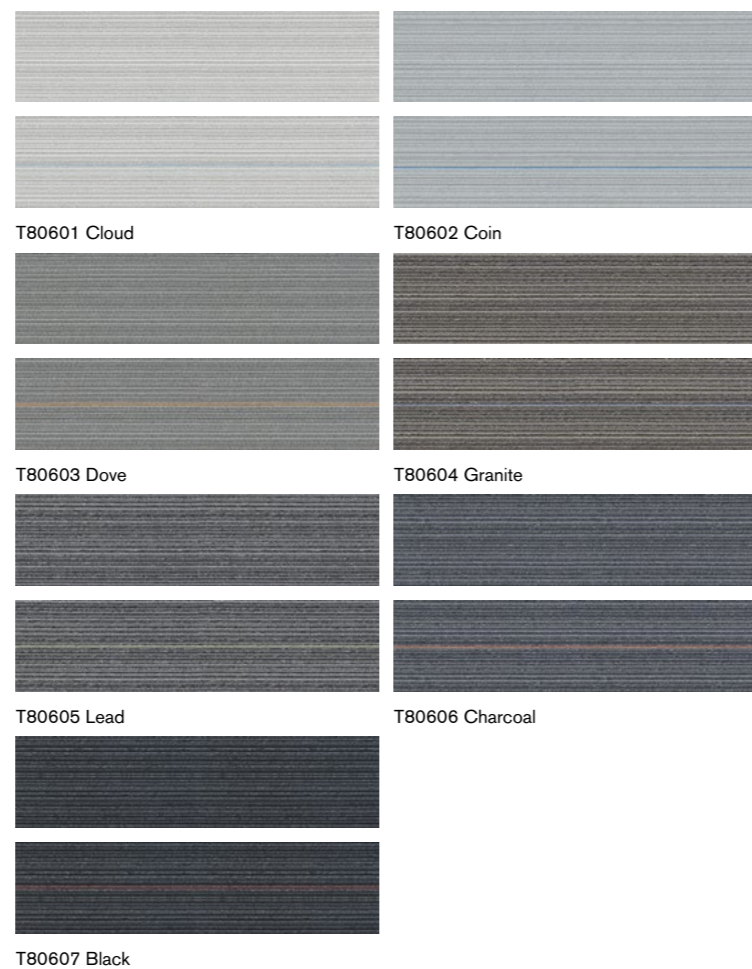
**Foot Traffic 流量级别:** Heavy

**Treatment 附加工艺:** **STAIN SHIELD™** 特殊防污处理 **SOIL GUARD™** 特殊防尘处理





## T806 TRACK 25



T806 系列长条形地毯包含数量随机的带彩条及不带彩条两个版本的地毯。  
Tuntex T806 "Track 25" contains a random mixture of base color tiles and tiles with accent colors.

**Face Yarn 纤维成分:** nexlon™ Premium Solution Dyed Nylon  
耐可隆原着染尼龙

**Construction 毯面结构:** Hi / Lo Loop 高低圈绒

**Pile Height 织毯毛高:** 4.0 / 3.5 mm

**Tile Size 成品规格:** 250 mm x 1000 mm

**Standard Backing 标准化附底:** TUNTEX Duraback

**Foot Traffic 流量级别:** Heavy

**Treatment 附加工艺:** **STAIN SHIELD™** 特殊防污处理 **SOIL GUARD™** 特殊防尘处理



## T807 SUNSHOWER



## aircell™

**Face Yarn 纤维成分:** nexlon™ Premium Solution Dyed Nylon featured with aircell  
耐可隆原着染尼龙 含 aircell 空灵纱

**Construction 毯面结构:** Hi / Mid / Lo Loop 高中低圈绒

**Pile Height 织毯毛高:** 5.5 / 4.5 / 3.0 mm

**Tile Size 成品规格:** 250 mm x 1000 mm

**Standard Backing 标准化附底:** TUNTEX Duraback

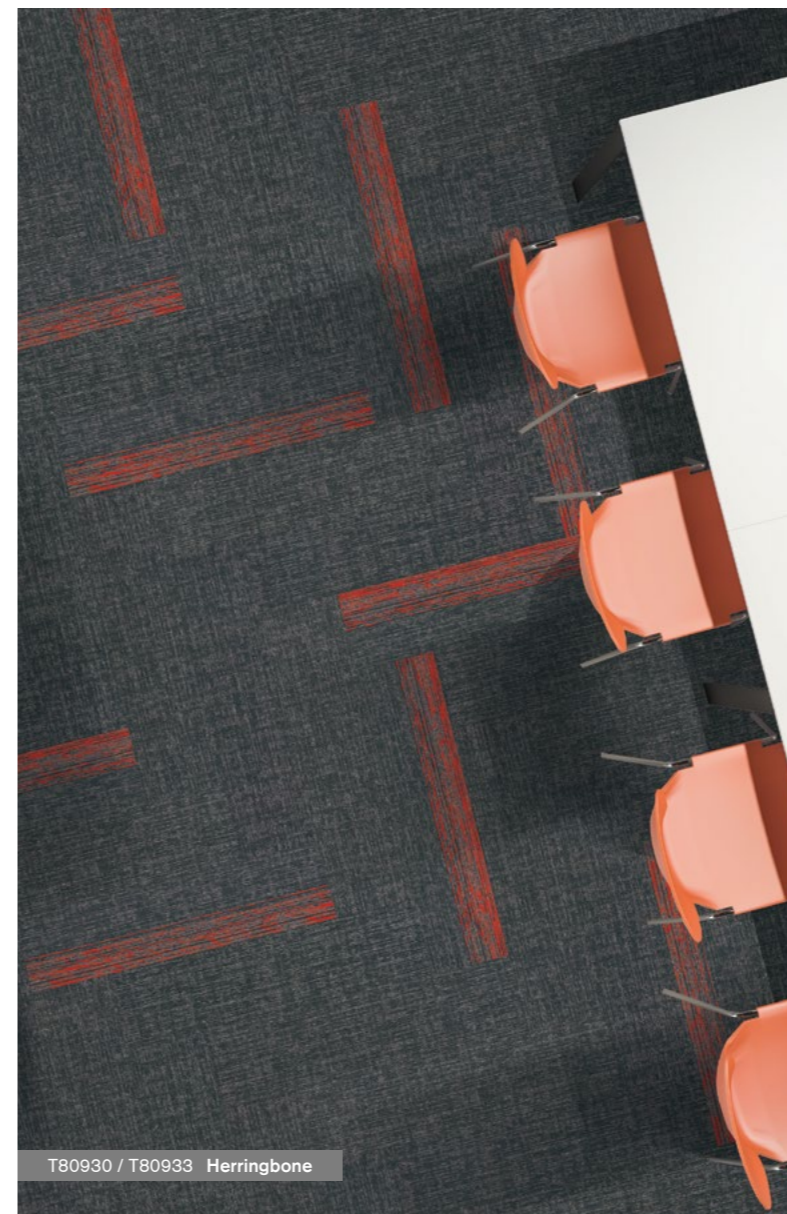
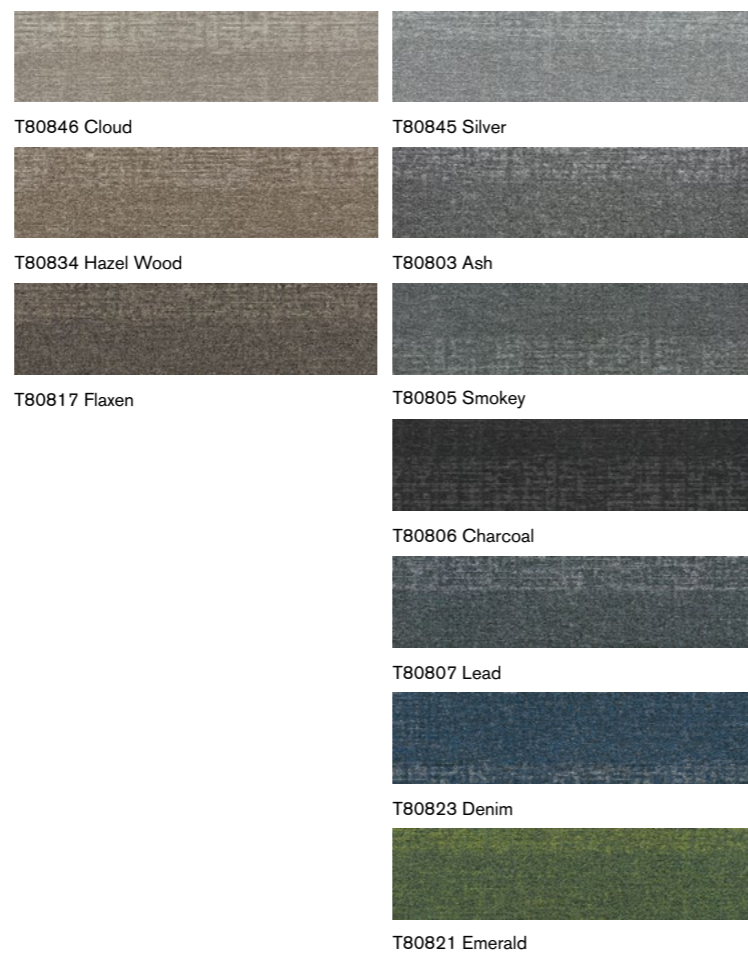
**Foot Traffic 流量级别:** Heavy

**Treatment 附加工艺:** **STAIN SHIELD™** 特殊防污处理 **SOIL GUARD™** 特殊防尘处理

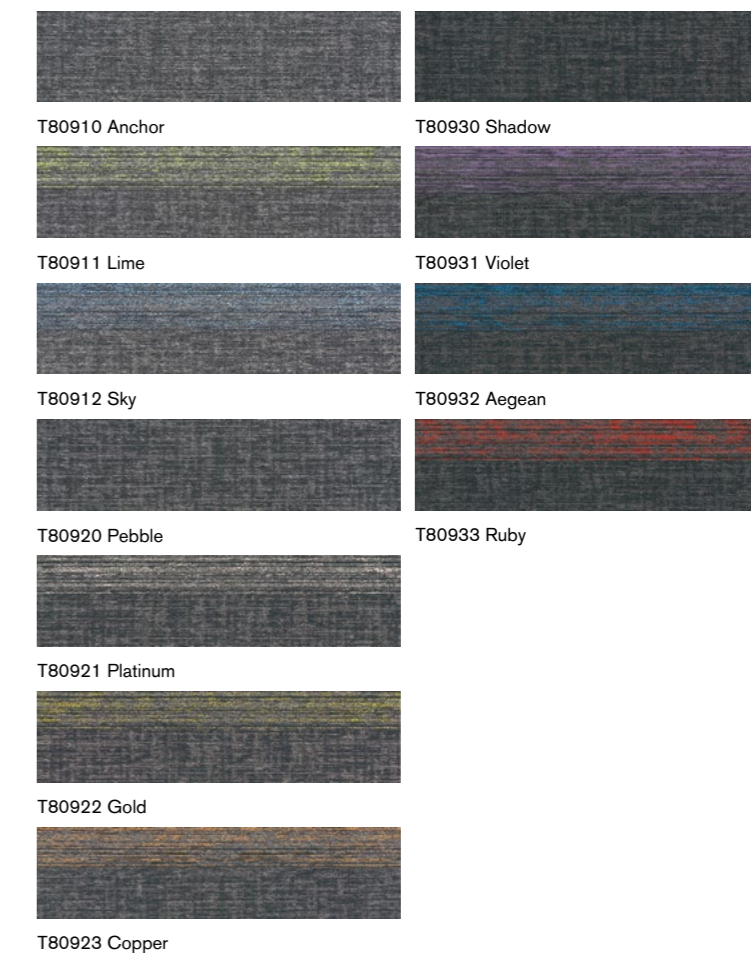




## T808 TASSELS



## T809 COLOR STROKE



**Face Yarn 纤维成分:** nexlon™ Premium Solution Dyed Nylon  
耐可隆原着染尼龙

**Construction 毯面结构:** Hi / Mid / Lo Loop 高中低圈绒

**Pile Height 织毯毛高:** 5.0 / 4.5 / 3.0 mm

**Tile Size 成品规格:** 250 mm x 1000 mm

**Standard Backing 标准化附底:** TUNTEX Duraback

**Foot Traffic 流量级别:** Heavy

**Treatment 附加工艺:** STAINSHIELD™ 特殊防污处理 SOILGUARD™ 特殊防尘处理

**Face Yarn 纤维成分:** nexlon™ Premium Solution Dyed Nylon  
耐可隆原着染尼龙

**Construction 毯面结构:** Hi / Mid / Lo Loop 高中低圈绒

**Pile Height 织毯毛高:** 5.0 / 4.5 / 3.0 mm

**Tile Size 成品规格:** 250 mm x 1000 mm

**Standard Backing 标准化附底:** TUNTEX Duraback

**Foot Traffic 流量级别:** Heavy

**Treatment 附加工艺:** STAINSHIELD™ 特殊防污处理 SOILGUARD™ 特殊防尘处理

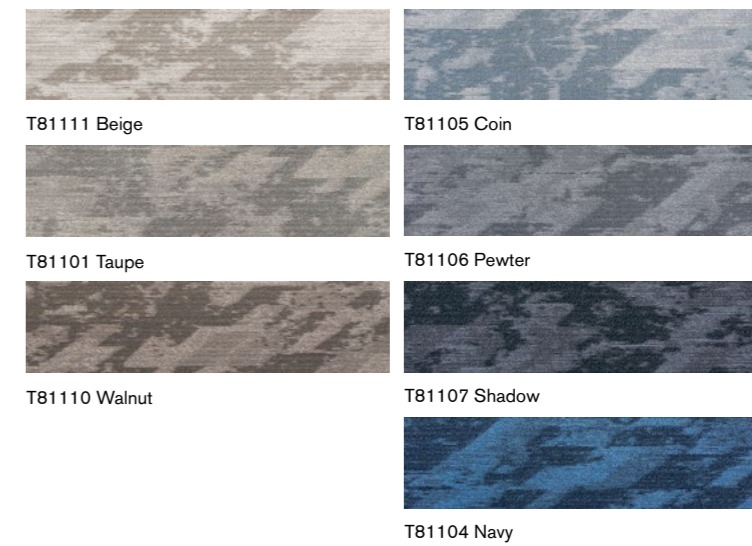




## T810 ABSTRACT



## T811 CUBE



T810 / T811 are complementary to T812 / T813 series T810 / T811 可与 T812 / T813 搭配使用

**Face Yarn 纤维成分:** nexlon™ Premium Solution Dyed Nylon  
 耐可隆原着染尼龙

**Construction 毯面结构:** Hi / Mid / Lo Loop 高中低圈绒

**Pile Height 织毯毛高:** 5.5 / 5.0 / 3.0 mm

**Tile Size 成品规格:** 250 mm x 1000 mm

**Standard Backing 标准化附底:** TUNTEX Duraback

**Foot Traffic 流量级别:** Heavy

**Treatment 附加工艺:** **STAIN SHIELD™** 特殊防污处理 **SOIL GUARD™** 特殊防尘处理

T810 / T811 are complementary to T812 / T813 series T810 / T811 可与 T812 / T813 搭配使用

**Face Yarn 纤维成分:** nexlon™ Premium Solution Dyed Nylon  
 耐可隆原着染尼龙

**Construction 毯面结构:** Hi / Mid / Lo Loop 高中低圈绒

**Pile Height 织毯毛高:** 5.5 / 5.0 / 3.0 mm

**Tile Size 成品规格:** 250 mm x 1000 mm

**Standard Backing 标准化附底:** TUNTEX Duraback

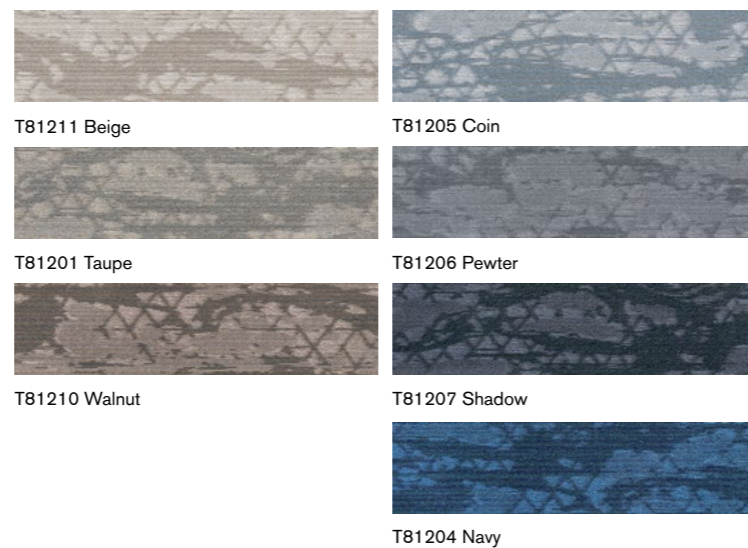
**Foot Traffic 流量级别:** Heavy

**Treatment 附加工艺:** **STAIN SHIELD™** 特殊防污处理 **SOIL GUARD™** 特殊防尘处理





## T812 EXPRESSION



T810 / T811 are complementary to T812 / T813 series T810 / T811 可与 T812 / T813 搭配使用

**Face Yarn 纤维成分:** nexlon™ Premium Solution Dyed Nylon  
 耐可隆原着染尼龙

**Construction 毯面结构:** Hi / Mid / Lo Loop 高中低圈绒

**Pile Height 织毯毛高:** 5.5 / 5.0 / 3.0 mm

**Tile Size 成品规格:** 250 mm x 1000 mm

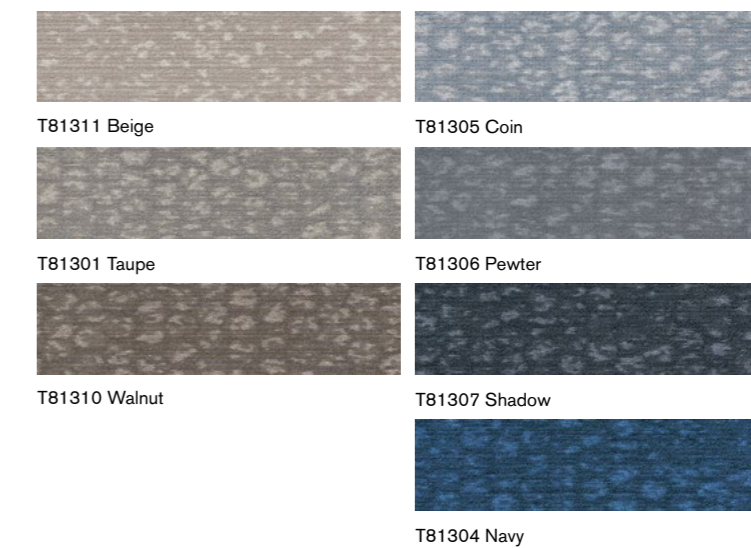
**Standard Backing 标准化附底:** TUNTEX Duraback

**Foot Traffic 流量级别:** Heavy

**Treatment 附加工艺:** STAINSHIELD™ 特殊防污处理 SOILGUARD™ 特殊防尘处理



## T813 NOUVEL



T810 / T811 are complementary to T812 / T813 series T810 / T811 可与 T812 / T813 搭配使用

**Face Yarn 纤维成分:** nexlon™ Premium Solution Dyed Nylon  
 耐可隆原着染尼龙

**Construction 毯面结构:** Hi / Mid / Lo Loop 高中低圈绒

**Pile Height 织毯毛高:** 5.5 / 5.0 / 3.0 mm

**Tile Size 成品规格:** 250 mm x 1000 mm

**Standard Backing 标准化附底:** TUNTEX Duraback

**Foot Traffic 流量级别:** Heavy

**Treatment 附加工艺:** STAINSHIELD™ 特殊防污处理 SOILGUARD™ 特殊防尘处理





T81504 / T81505 Ashlar

## T815 NIGHT FALLS



T81601 / T81603 Ashlar

## T816 IMMERSE



**Face Yarn 纤维成分:** nexlon™ Premium Solution Dyed Nylon featured with aircell  
 耐可隆原着染尼龙 含 aircell 空灵纱

**Construction 毯面结构:** Hi / Mid / Lo Loop 高中低圈绒

**Pile Height 织毯毛高:** 7.0 / 4.5 / 3.5 mm

**Tile Size 成品规格:** 250 mm x 1000 mm

**Standard Backing 标准化附底:** TUNTEX Duraback

**Foot Traffic 流量级别:** Heavy

**Treatment 附加工艺:** **STAIN SHIELD™** 特殊防污处理 **SOIL GUARD™** 特殊防尘处理

**Face Yarn 纤维成分:** nexlon™ Premium Solution Dyed Nylon featured with quartz  
 耐可隆原着染尼龙 含 quartz 石英纱

**Construction 毯面结构:** Hi / Mid / Lo Loop 高中低圈绒

**Pile Height 织毯毛高:** 5.5 / 4.5 / 3.0 mm

**Tile Size 成品规格:** 250 mm x 1000 mm

**Standard Backing 标准化附底:** TUNTEX Duraback

**Foot Traffic 流量级别:** Heavy

**Treatment 附加工艺:** **STAIN SHIELD™** 特殊防污处理 **SOIL GUARD™** 特殊防尘处理



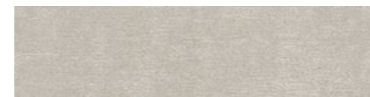


T81903 / T81905 Herringbone

## T819 SANDSCAPE



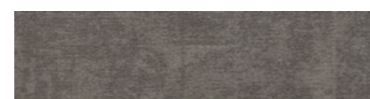
T81901 Cloud



T81902 Oat



T81903 Sandcastle



T81904 Coffee

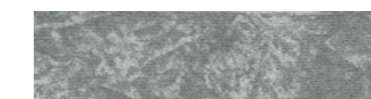


T81905 Carrot



T85001 / T85002 Ashlar

## T850 PAPER MACHE



T85001 Cloud



T85007 Fawn



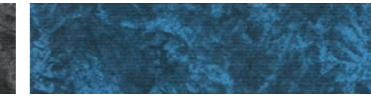
T85002 Shadow



T85008 Olive



T85003 Charcoal



T85009 Cobalt



T85004 Carob



T85010 Navy



T85005 Hazel Wood



T85011 Garnet



T85006 Umber

**Face Yarn 纤维成分:** nexlon™ Premium Solution Dyed Nylon featured with quartz  
耐可隆原着染尼龙 含 quartz 石英纱

**Construction 毯面结构:** Hi / Mid / Lo Loop 高中低圈绒

**Pile Height 织毯毛高:** 4.5 / 4.2 / 3.5 mm

**Tile Size 成品规格:** 250 mm x 1000 mm

**Standard Backing 标准化附底:** TUNTEX Duraback

**Foot Traffic 流量级别:** Heavy

**Treatment 附加工艺:** **STAIN SHIELD™** 特殊防污处理 **SOIL GUARD™** 特殊防尘处理

## aircell™

**Face Yarn 纤维成分:** nexlon™ Premium Solution Dyed Nylon featured with aircell  
耐可隆原着染尼龙 含 aircell 空灵纱

**Construction 毯面结构:** Hi / Mid / Lo Loop 高中低圈绒

**Pile Height 织毯毛高:** 5.0 / 4.0 / 3.0 mm

**Tile Size 成品规格:** 250 mm x 1000 mm

**Standard Backing 标准化附底:** TUNTEX Duraback

**Foot Traffic 流量级别:** Heavy

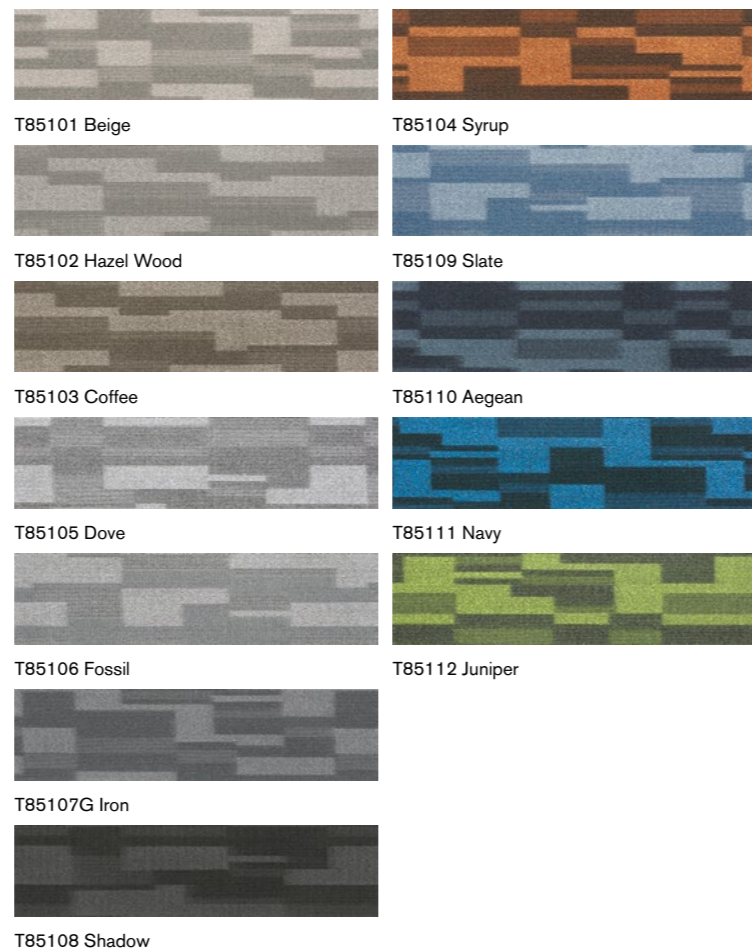
**Treatment 附加工艺:** **STAIN SHIELD™** 特殊防污处理 **SOIL GUARD™** 特殊防尘处理





T85102 Ashlar

## T851 TETRIX



T85101 Beige

T85104 Syrup

T85102 Hazel Wood

T85109 Slate

T85103 Coffee

T85110 Aegean

T85105 Dove

T85111 Navy

T85106 Fossil

T85112 Juniper

T85107G Iron

T85108 Shadow



T85203 / T85205 / T85206 Ashlar

## T852 RIPPLE



T85201 Cloud

T85204 Stone

T85202 Fossil

T85205 Olive

T85203 Shadow

T85206 Oyster

**Face Yarn 纤维成分:** nexlon™ Premium Solution Dyed Nylon  
耐可隆原着染尼龙

**Construction 毯面结构:** Hi / Mid / Lo Loop 高中低圈绒

**Pile Height 织毯毛高:** 5.0 / 4.5 / 3.0 mm

**Tile Size 成品规格:** 250 mm x 1000 mm

**Standard Backing 标准化附底:** TUNTEX Duraback

**Foot Traffic 流量级别:** Heavy

**Treatment 附加工艺:** **STAIN SHIELD™** 特殊防污处理 **SOIL GUARD™** 特殊防尘处理



**Face Yarn 纤维成分:** nexlon™ Premium Solution Dyed Nylon featured with aircell™  
耐可隆原着染尼龙 含 aircell 空灵纱

**Construction 毯面结构:** Hi / Mid / Lo Loop 高中低圈绒

**Pile Height 织毯毛高:** 6.0 / 5.0 / 3.5 mm

**Tile Size 成品规格:** 250 mm x 1000 mm

**Standard Backing 标准化附底:** TUNTEX Duraback

**Foot Traffic 流量级别:** Heavy

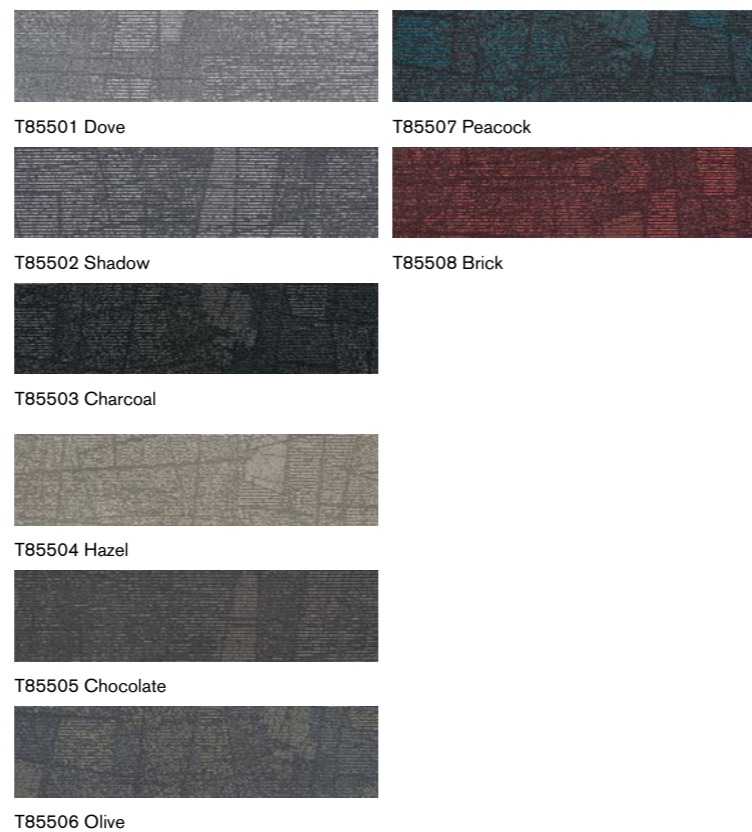
**Treatment 附加工艺:** **STAIN SHIELD™** 特殊防污处理 **SOIL GUARD™** 特殊防尘处理





T85501 / T85502 Ashlar

## T855 REFLECTION



**Face Yarn 纤维成分:** nexlon™ Premium Solution Dyed Nylon featured with aircell  
耐可隆原着染尼龙 含 aircell 空灵纱

**Construction 毯面结构:** Hi / Mid / Lo Loop 高中低圈绒

**Pile Height 织毯毛高:** 5.5 / 5.0 / 3.5 mm

**Tile Size 成品规格:** 250 mm x 1000 mm

**Standard Backing 标准化附底:** TUNTEX Duraback

**Foot Traffic 流量级别:** Heavy

**Treatment 附加工艺:** **STAIN SHIELD™** 特殊防污处理 **SOIL GUARD™** 特殊防尘处理



T85710 / T85712 Ashlar

## T857 TREE WALK



**Face Yarn 纤维成分:** nexlon™ Premium Solution Dyed Nylon featured with aircell  
耐可隆原着染尼龙 含 aircell 空灵纱

**Construction 毯面结构:** Multi Hi / Lo Loop 高低渐变圈绒

**Pile Height 织毯毛高:** 6.0 - 4.0 mm

**Tile Size 成品规格:** 250 mm x 1000 mm

**Standard Backing 标准化附底:** TUNTEX Duraback

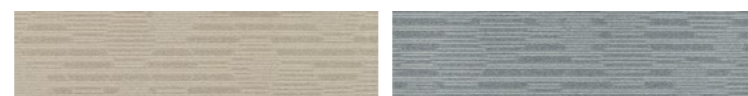
**Foot Traffic 流量级别:** Heavy

**Treatment 附加工艺:** **STAIN SHIELD™** 特殊防污处理 **SOIL GUARD™** 特殊防尘处理



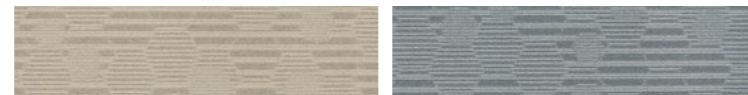


## T861 BUMBLEBEES



T86101 Tan

T86108 Aegean



T86102 Hazel Wood

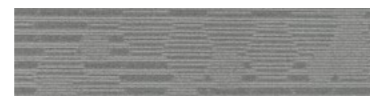
T86109 Spruce



T86103 Sand



T86104 Coin



T86105 Anchor



T86106 Shadow

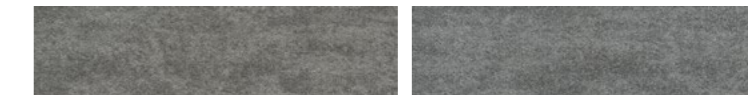


## T863 MAGNETITE



T86301 Ash

T86303 Cloud



T86302 Fossil

T86304 Coin



T86305 Anchor



<b>Face Yarn 纤维成分:</b>	nexlon™ Premium Solution Dyed Nylon featured with aircell 耐可隆原着染尼龙 含 aircell 空灵纱
<b>Construction 毯面结构:</b>	Hi / Mid / Lo Loop 高中低圈绒
<b>Pile Height 织毯毛高:</b>	6.0 / 5.5 / 3.0 mm
<b>Tile Size 成品规格:</b>	250 mm x 1000 mm
<b>Standard Backing 标准化附底:</b>	TUNTEX Duraback
<b>Foot Traffic 流量级别:</b>	Heavy
<b>Treatment 附加工艺:</b>	<b>STAIN SHIELD™</b> 特殊防污处理 <b>SOIL GUARD™</b> 特殊防尘处理



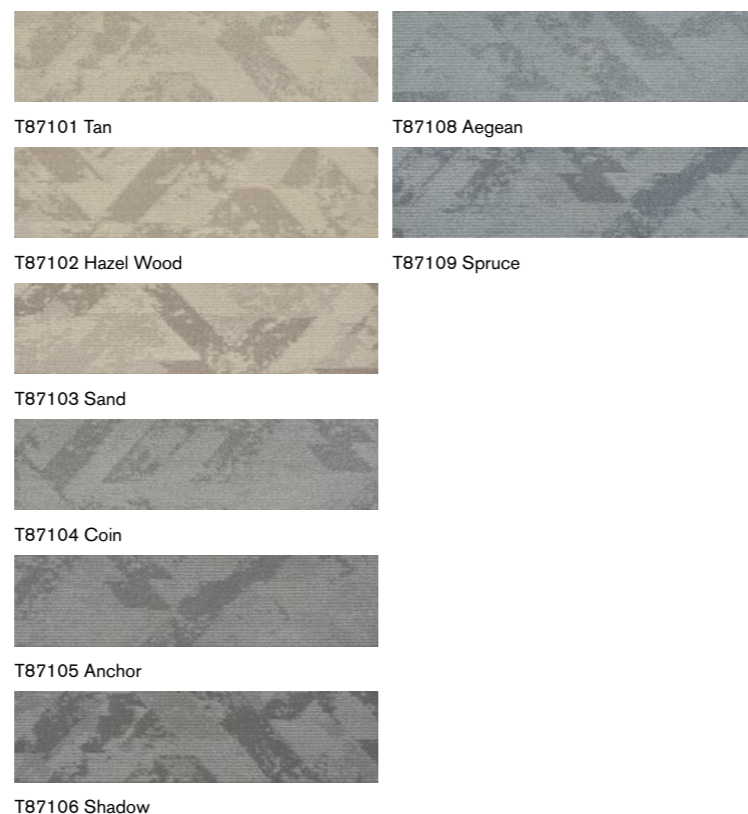
<b>Face Yarn 纤维成分:</b>	nexlon™ Premium Solution Dyed Nylon featured with aircell 耐可隆原着染尼龙 含 aircell 空灵纱
<b>Construction 毯面结构:</b>	Hi / Lo Loop 高低圈绒
<b>Pile Height 织毯毛高:</b>	5.5 / 3.0 mm
<b>Tile Size 成品规格:</b>	250 mm x 1000 mm
<b>Standard Backing 标准化附底:</b>	TUNTEX Duraback
<b>Foot Traffic 流量级别:</b>	Heavy
<b>Treatment 附加工艺:</b>	<b>STAIN SHIELD™</b> 特殊防污处理 <b>SOIL GUARD™</b> 特殊防尘处理





T87102 / T87108 / T87109 Herringbone

## T871 ICE SHARDS



T873L01 / T873L02 / T873L03 Ashlar / Herringbone

## T873 TIDE



**Face Yarn 纤维成分:** nexlon™ Premium Solution Dyed Nylon featured with aircell  
耐可隆原着染尼龙 含 aircell 空灵纱

**Construction 毯面结构:** Hi / Lo Loop 高低圈绒

**Pile Height 织毯毛高:** 5.8 / 3.0 mm

**Tile Size 成品规格:** 250 mm x 1000 mm

**Standard Backing 标准化附底:** TUNTEX Duraback

**Foot Traffic 流量级别:** Heavy

**Treatment 附加工艺:** **STAIN SHIELD™** 特殊防污处理 **SOIL GUARD™** 特殊防尘处理



**Face Yarn 纤维成分:** nexlon™ Premium Solution Dyed Nylon featured with aircell  
耐可隆原着染尼龙 含 aircell 空灵纱

**Construction 毯面结构:** Multi Hi / Lo Loop 高低渐变圈绒

**Pile Height 织毯毛高:** 6.0 - 4.0 mm

**Tile Size 成品规格:** 250 mm x 1000 mm

**Standard Backing 标准化附底:** TUNTEX Duraback

**Foot Traffic 流量级别:** Heavy

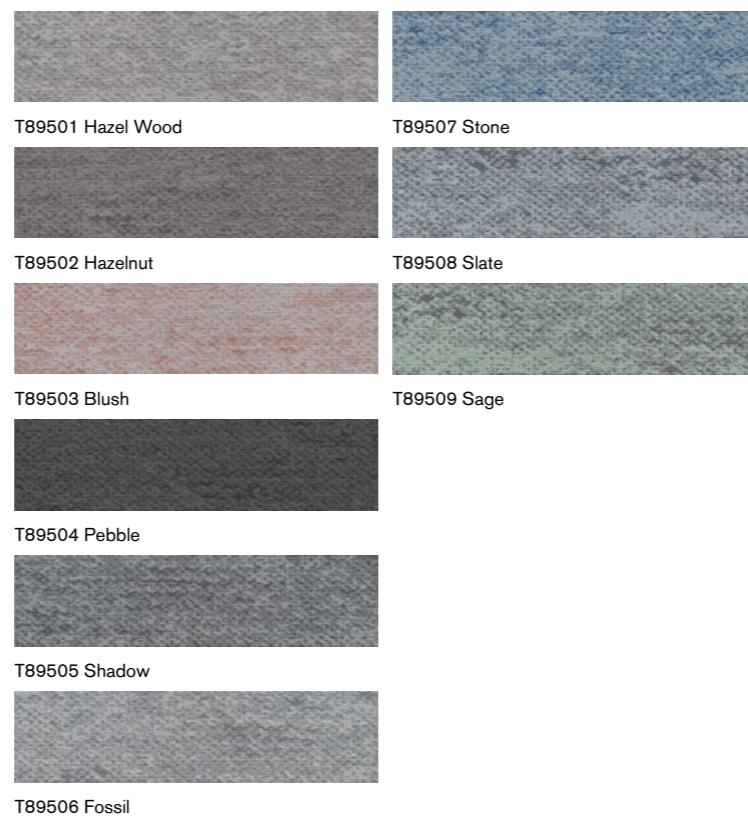
**Treatment 附加工艺:** **STAIN SHIELD™** 特殊防污处理 **SOIL GUARD™** 特殊防尘处理





T89501 / T89502 / T89503 Herringbone

## T895 DENIM



T89604 / T89605 Ashlar

## T896 SNOWFLAKES



**Face Yarn 纤维成分:** nexlon™ Premium Solution Dyed Nylon featured with aircell  
耐可隆原着染尼龙 含 aircell 空灵纱

**Construction 毯面结构:** Hi / Lo Loop 高低圈绒

**Pile Height 织毯毛高:** 6.0 / 3.0 mm

**Tile Size 成品规格:** 250 mm x 1000 mm

**Standard Backing 标准化附底:** TUNTEX Duraback

**Foot Traffic 流量级别:** Heavy

**Treatment 附加工艺:** **STAIN SHIELD™** 特殊防污处理 **SOIL GUARD™** 特殊防尘处理



**Face Yarn 纤维成分:** nexlon™ Premium Solution Dyed Nylon featured with aircell  
耐可隆原着染尼龙 含 aircell 空灵纱

**Construction 毯面结构:** Hi / Lo Loop 高低圈绒

**Pile Height 织毯毛高:** 6.5 / 3.0 mm

**Tile Size 成品规格:** 250 mm x 1000 mm

**Standard Backing 标准化附底:** TUNTEX Duraback

**Foot Traffic 流量级别:** Heavy

**Treatment 附加工艺:** **STAIN SHIELD™** 特殊防污处理 **SOIL GUARD™** 特殊防尘处理

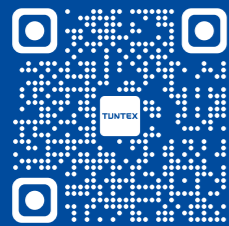


# SHOWCASES

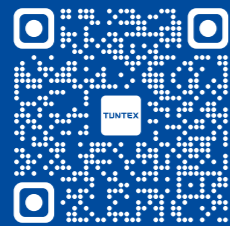
## 案例展示







Official Website



Official Wechat

**上海办事处**

上海市闵行区申虹路 666 号虹桥正荣中心  
1 号楼 3F, 201106  
电话: +86 21 62333488  
邮箱: ShangHai@tuntextcarpet.com

**台湾办事处**

台湾省台南市中西区成功路 1 号, 70050  
邮箱: Taiwan@tuntextcarpet.com

**香港办事处**

香港九龙观塘鸿图道 31 号鸿贸中心 2306 室, 852  
电话: +852 28580353  
邮箱: HongKong@tuntextcarpet.com

**日本办事处**

3-16-10, Yushima, Bunkyo, Tokyo, 113-0034, Japan  
电话: +81 3 38345148  
邮箱: Japan@tuntext-carpet.com

**新加坡办事处 < 东南亚 >**

No. 60 Paya Lebar Rd., #10-43 Paya Lebar Square,  
Singapore, 409051  
邮箱: SouthEastAsia@tuntextcarpet.com

**英国办事处 < 欧洲 / 中东 / 非洲 / 印度 >**

Yoxall Lodge, Scotch Hill Rd., Newchurch, Burton on Trent,  
DE13 8RL, UK  
电话: +44 7836 506105  
邮箱: UK@tuntextcarpet.com

**澳大利亚办事处 < 澳大利亚 / 纽西兰 >**

5 Coolaroo Avenue, Hurstbridge, Victoria, 3099, Australia  
邮箱: Australia@tuntextcarpet.com

**墨西哥办事处 < 中南美洲 >**

General Salvador Alvarado 56. Col. Escandon I secc. Del.  
Miguel Hidalgo. CP 11800. Mexico  
电话: +52 1 55 1654 0939  
邮箱: LatinAmerica@tuntextcarpet.com