



# Natural Charm

T676

TUNTEX™

# Natural Charm

T676 Natural Charm captures the interplay of light, shadow, color and form inherent in nature. The resulting designs effortlessly create a distinctive visual impact characterized by a wealth of hues and intricate textures.







T67601 / T67606 / T67612 Brick



T67613 / T67614 / T67615 Ashlar



T67611 Brick



T67602 / T67611 Brick



T67602 / T67603 / T67610 / T67611 / T67612 Monolithic



T67601 / T67606 / T67611 / T67612 Brick



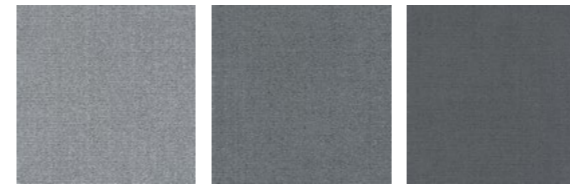
T67607 / T67608 / T67609 / T67610 Quarter-Turn



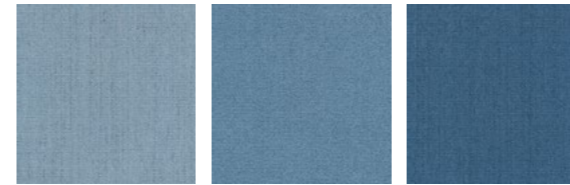
T67607 / T67608 / T67609 / T67610 Quarter-Turn



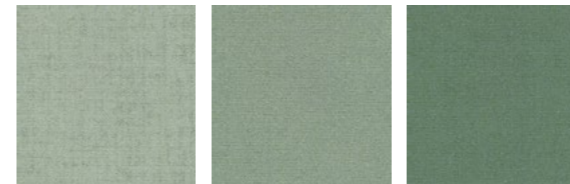
T67603 / T67610 / T67611 Brick



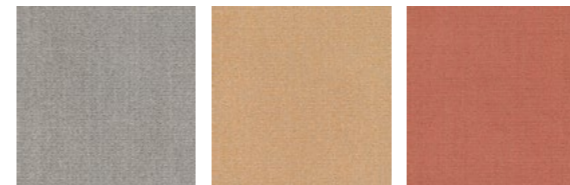
T67601 Cloud T67602 Fossil T67603 Pebble



T67604 Stone T67605 Aegean T67606 Spruce



T67607 Sage T67608 Olive T67609 Moss



T67610 Flaxen T67611 Apricot T67612 Brick



T67613 Dove T67614 Blush T67615 Denim

<b>Style</b>	T676 "Natural Charm"
<b>Construction</b>	Hi / Mid / Lo Loop
<b>Pile Fibre</b>	nexlon™ Premium Solution Dyed Nylon featured with aircell
<b>Dye Method</b>	Solution Dyed
<b>Gauge</b>	1 / 10G
<b>Pile Height</b>	6.0 / 5.0 / 4.0mm
<b>Total Thickness</b>	7.7mm(±0.5mm)
<b>Tile size</b>	500mm x 500mm
<b>Total Weight</b>	Approx. 5000g/m <sup>2</sup>
<b>Secondary Back</b>	TUNTEX Duraback
<b>Stain Resistance</b>	Stainshield Treatment: <b>STAIN</b> SHIELD™
<b>Soil Resistance</b>	Soil Guard Treatment: <b>SOIL</b> GUARD™

<b>Wear Warranty</b>	Product is warranted not to lose more than 10% pile fibre by weight in normal commercial use within 15 years.
<b>Colour Fastness</b>	15 Year Warranty AATCC 16. Grade 4 - Little or no change.
<b>Static Electricity</b>	Permanent Lifetime Protection - less than 2.0 KV.
<b>Dimensional Stability</b>	Warranted not to change in size by more than 0.5 mm in normal use. Will not dome or dish in normal use.
<b>Installation</b>	Tackifier or Releasable adhesive Recommended.
<b>Sustainability</b>	All yarns used are Solution dyed to minimise use of water and exclude any effluent production. ISO 14001 and ISO 9001.

Health Product Declaration (HPD).

U.S. CRI Green Label Plus Certificate.

Singapore Green Building Council Product Certificate - 4 Ticks "Leader".

Passes ASTM Flammability Test.  
Flammability: Passes (ASTM E648)  
Smoke Density: Passes (ASTM E662)

Passes AATCC Static Propensity Test.  
Static Propensity: ≤ 2.0 KV (AATCC 134)

Passes the Quality Test of China National Carpet Quality Test Center.

Passes the Flammability Test and Environmental Protection Test of the China National Fire and Construction Quality Surveillance Center.

ISO 9001 Quality Management System.

ISO 14001 Environmental Management System.

ISO 45001 Healthy & Safety Management System.





