



Autumn Peak LC07
Lake Hues T677

TUNTEX™



Foliage Collection

LC07 & T677

Foliage Collection is inspired by the rich and vibrant hues of the fall leaves. Imagine taking a stroll outdoors and being completely mesmerized by the stunning array of falling leaves as they change from vibrant greens to warm oranges, deep reds and lush golds. Masterpieces of nature, these scenes showcase an incredible spectrum of color that is truly a sight to behold.

Four exquisite color schemes are provided to inspire your design potential. Regardless of the setting, be it an office, educational institution, or a hospitality environment, its ability to adapt to different contexts while maintaining its visual appeal is particularly impressive.

The Foliage Collection's natural splendor and innovative designs offer an ideal carpeting solution tailored for commercial space.

LC07 Autumn Peak



When the gentle breeze blows and the sunlight filters through, the scene is filled with a captivating autumn panorama where golden yellows, vivid oranges, and deep browns intertwine. This feast of colors is nature's celebration of life.

LC07 Autumn Peak features 12 distinct paintings that capture the radiance of autumn. The leaves display a kaleidoscope of color as they transform over time, creating a serene and magnificent world.





Featuring the innovative LuxCushion™ backing to bring ultimate comfort and elevate the indoor experience.









LC0706 Ashlar



LC0704 Ashlar

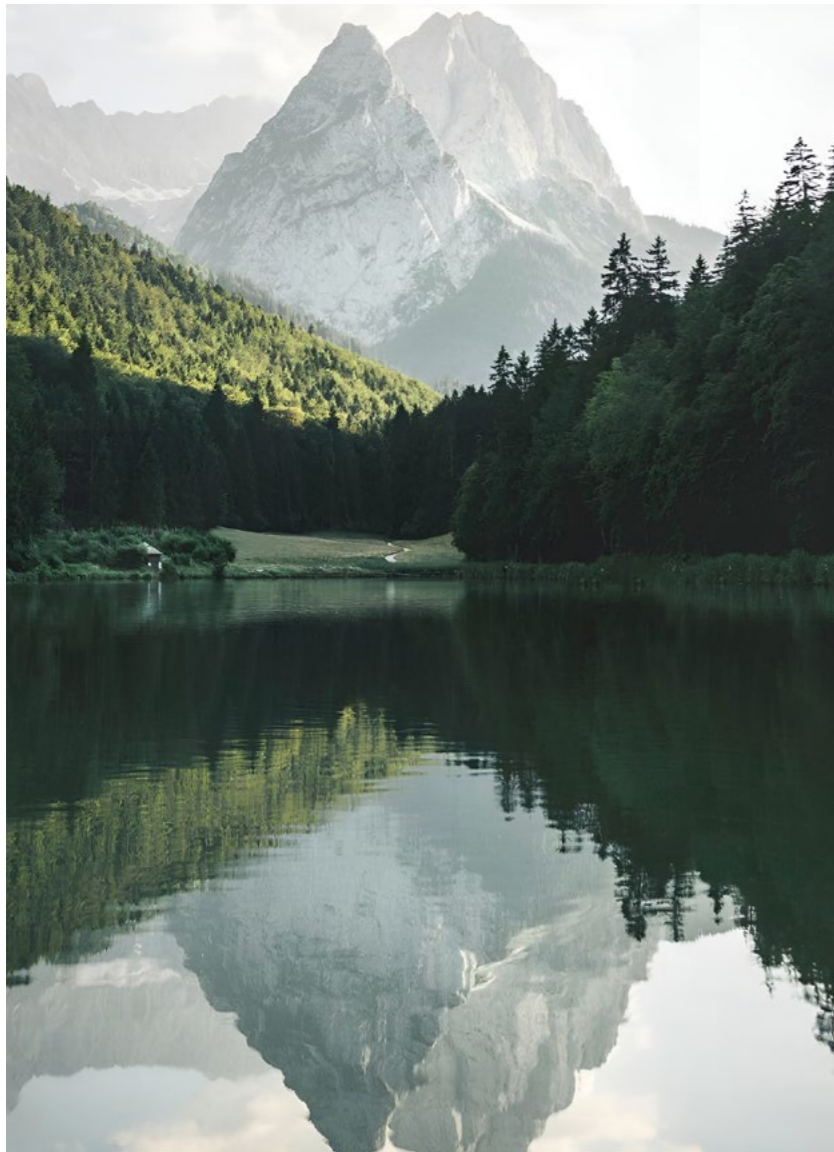


LC0701 / LC0703 Ashlar



LC0709 Herringbone

T677 Lake Hues



With T677 Lake Hues as the focal point, the breathtaking beauty of the natural world unfolds, transitioning from the deep, cerulean blue of the water to the gentle, turquoise ripples, and finally to the radiant golden hues of the setting sun, painting the sky with a mesmerizing display of colors.

The tranquil, shimmering waves of the lake reflect a myriad of colors from the clear blue sky above. Nestled in the embrace of nature, one can't help but feel a profound sense of peace and awe at the vastness of the world around them.





T67703 / T67704 Quarter-Turn



T67701 / T67702 / T67704 / T67705 Quarter-Turn



T67702 / T67707 Ashlar



T67707 / T67710 Ashlar





T67707 / T67710 Ashlar

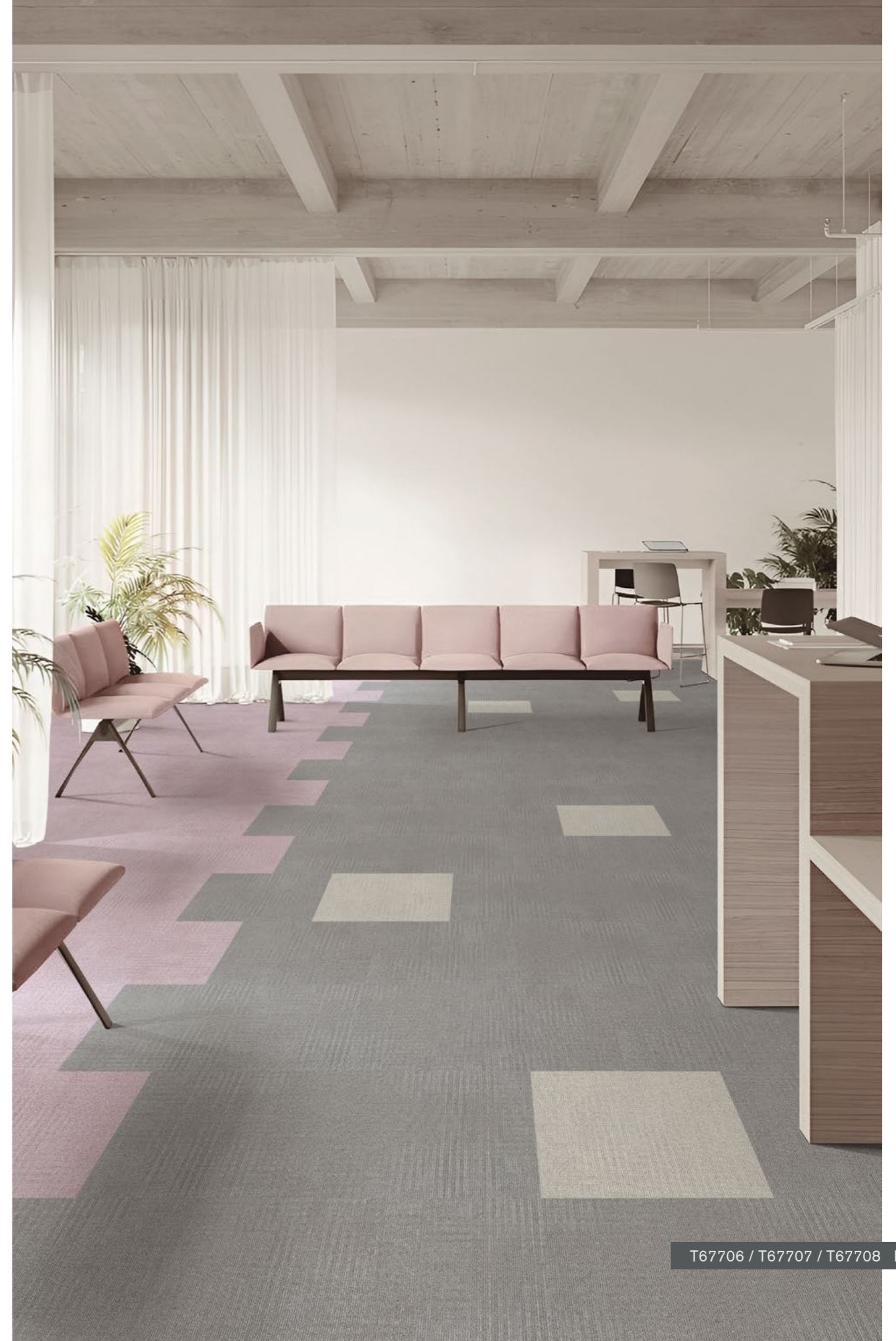


T67708 / T67709 Quarter-Turn





T67706 / T67710 Ashlar

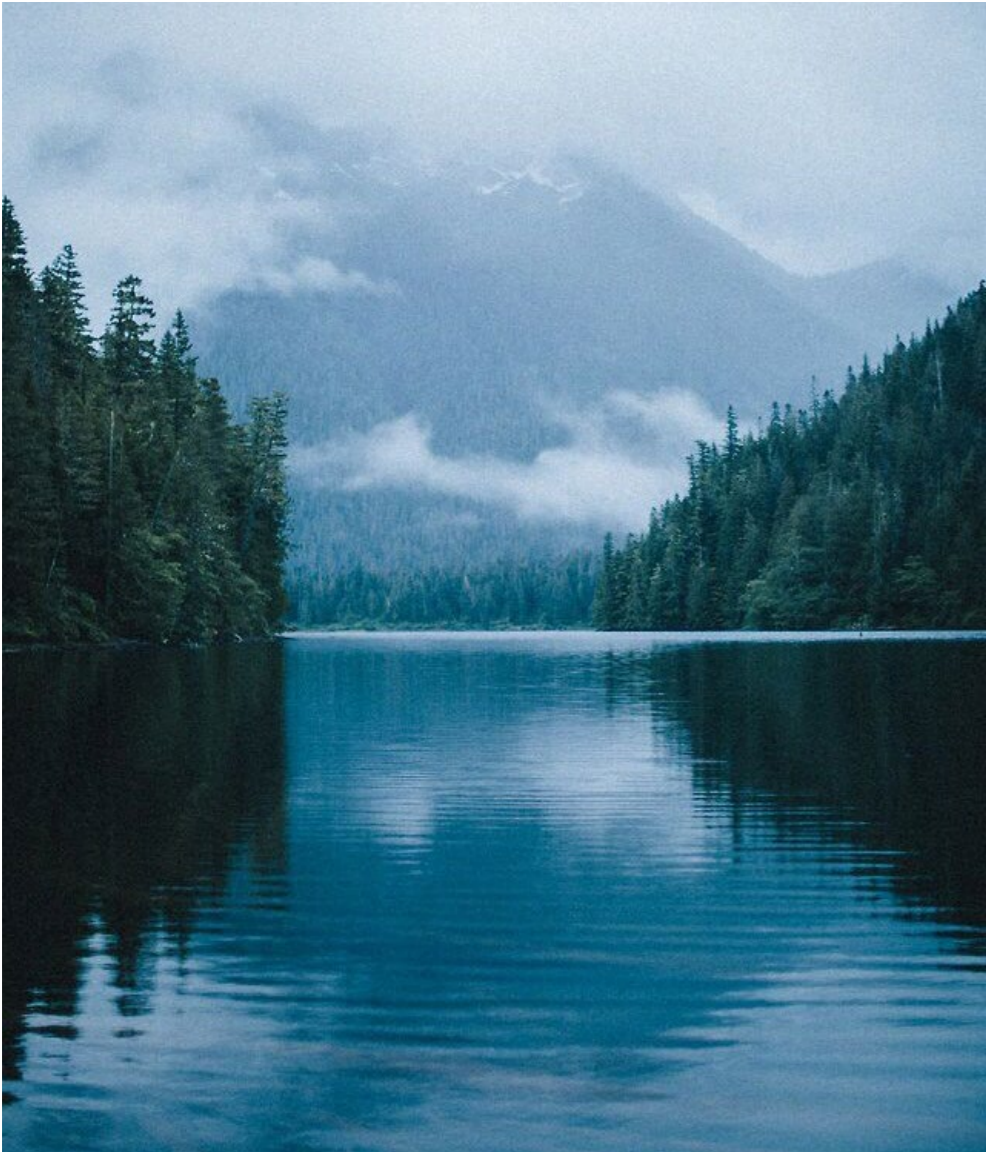


T67706 / T67707 / T67708 Brick

Design Combinations

LC07&T677

LC07 may be used in conjunction with T677 for the same project:
We recommend using T677 to cover large and open areas while placing LC07 in smaller rooms.





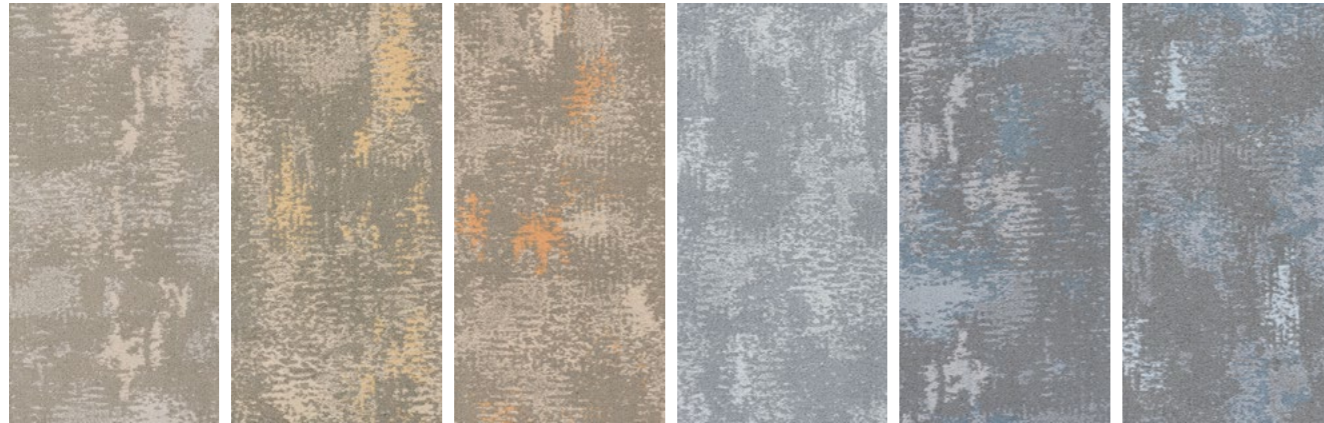


LC0710 / LC0711 / LC0712 / T67708 / T67709 Mix

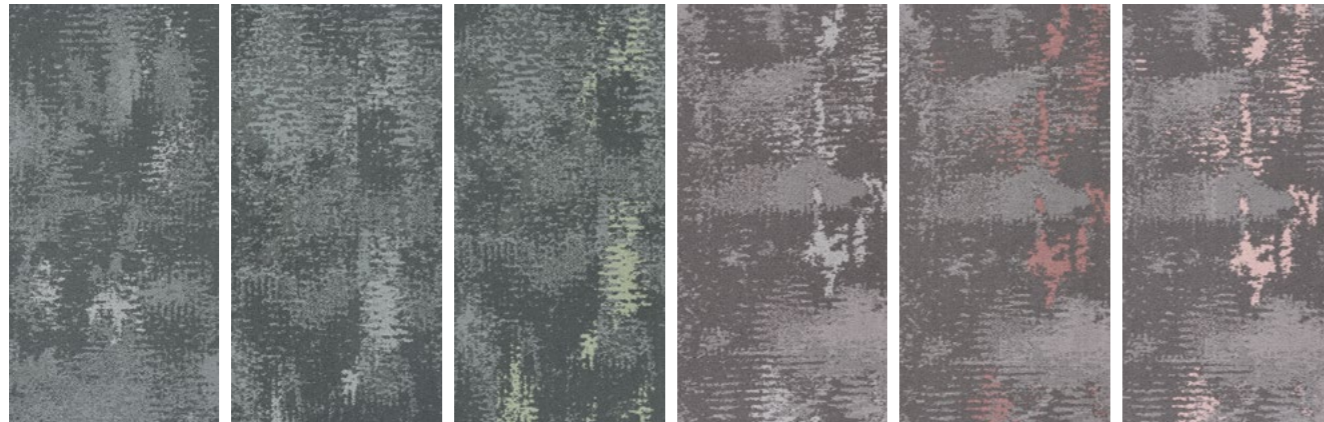


LC0706 / T67702 Mix





LC0701 Maple Basic LC0702 Maple LC0703 Maple Peak LC0707 Salvia Basic LC0708 Salvia LC0709 Salvia Peak



LC0704 Pine Basic LC0705 Pine LC0706 Pine Peak LC0710 Acer Basic LC0711 Acer LC0712 Acer Peak

| | |
|-------------------------|---|
| Style | LC07 "Autumn Peak" |
| Construction | Multi Hi / Lo Loop |
| Pile Fibre | nexlon™ Premium Solution Dyed Nylon |
| Dye Method | Solution Dyed |
| Gauge | 1 / 10G |
| Pile Height | 7.5 - 3.0mm |
| Total Thickness | 14.5mm(±0.5mm) |
| Tile size | 500mm x 1000mm |
| Total Weight | Approx. 3700g/m ² |
| Secondary Back | LUXCUSHION™ |
| Stain Resistance | Stainshield Treatment: STAIN SHIELD™ |
| Soil Resistance | Soil Guard Treatment: SOIL GUARD™ |
| Odor Reducer | Ecofresh Treatment: ECO FRESH™ |
| Anti-microbial | Microshield Treatment: MICRO SHIELD™ |



T67701 Pistachio T67702 Sage T67703 Olive T67704 Fossil T67705 Iron



T67706 Hazel Wood T67707 Sand Dollar T67708 Crepe T67709 Dove T67710 Cider

| | |
|-------------------------|---|
| Style | T677 "Lake Hues" |
| Construction | Multi Hi / Lo Loop |
| Pile Fibre | nexlon™ Premium Solution Dyed Nylon featured with aircell |
| Dye Method | Solution Dyed |
| Gauge | 1 / 12G |
| Pile Height | 5.2 - 3.0mm |
| Total Thickness | 7.2mm(±0.5mm) |
| Tile size | 500mm x 500mm |
| Total Weight | Approx. 4950g/m ² |
| Secondary Back | TUNTEX Duraback |
| Stain Resistance | Stainshield Treatment: STAIN SHIELD™ |
| Soil Resistance | Soil Guard Treatment: SOIL GUARD™ |

| | |
|------------------------------|--|
| Wear Warranty | Product is warranted not to lose more than 10% pile fibre by weight in normal commercial use within 15 years. |
| Colour Fastness | 15 Year Warranty AATCC 16. Grade 4 - Little or no change. |
| Static Electricity | Permanent Lifetime Protection - less than 2.0 KV. |
| Dimensional Stability | Warranted not to change in size by more than 0.5 mm in normal use. Will not dome or dish in normal use. |
| Installation | Tackifier or Releasable adhesive Recommended. |
| Sustainability | All yarns used are Solution dyed to minimise use of water and exclude any effluent production. ISO 14001 and ISO 9001. |

Health Product Declaration (HPD).
 U.S. CRI Green Label Plus Certificate.
 Singapore Green Building Council Product Certificate - 4 Ticks "Leader".
 Passes ASTM Flammability Test.
 Flammability: Passes (ASTM E648)
 Smoke Density: Passes (ASTM E662)
 Passes AATCC Static Propensity Test.
 Static Propensity: ≤ 2.0 KV (AATCC 134)
 Passes the Quality Test of China National Carpet Quality Test Center.
 Passes the Flammability Test and Environmental Protection Test of the China National Fire and Construction Quality Surveillance Center.
 ISO 9001 Quality Management System.
 ISO 14001 Environmental Management System.
 ISO 45001 Healthy & Safety Management System.



