




07

ISSUE 7.0.3
FOR
TUNTEX™
< 东帝士产品合集 >





**A leading carpet manufacturer
dedicated to green technology and
environmentally friendly
production methods.**

环保地毯制造专家

56 YEARS ANNIVERSARY

56 年的积累与发展，Tuntex 东帝士逐步成长为行业领军品牌

With more than 56 years experience, Tuntex has become one of the global leaders in the industry.

Tuntex 东帝士地毯于 1968 年成立，是一家地毯生产商和出口商。公司于之后的数十年里进行业务拓展，并于 1994 年在全国率先建立大规模地毯工厂，拥有先进完善的生产设施。以江苏为生产基地，上海东帝士地毯有限公司为销售公司，东帝士地毯获授“美国地毯协会”（CRI）所颁发的绿色标签认证，成为率先获得此类认证的中国特色地毯制造商。

Established in 1968, Tuntex carpet is a carpet manufacturer and exporter. In the following decades, the company expanded its business and established one of the first large-scale carpet factories with the most complete and safe production facilities in China in 1994. Tuntex has been awarded the green label certification issued by CRI in the United States, becoming one of the first local carpet manufacturers with such certification.



1968

Tuntex 在台湾成立
First established as a manufacturer of carpets.

1994

建立中国生产机构
Opens one of the largest production facilities by floor area in the whole of China.

1995

早期建立污水处理系统的
地毯制造商
One of the first carpet manufacturers to implement waste water recycling.

2008

较早获得美国 CRI 颁发的绿色标签认证
Proud to be one of the first local carpet manufacturers to be awarded the coveted Green Label Plus certification, by the Carpet and Rug Institute (CRI) in the US.

2012

早期建立起地毯的闭环回收体系
One of the first carpet manufacturers to start closed-loop recycling for modular carpet.

2015

亚洲范围内较早获得 GreenCircle 回收认证
One of the first carpet manufacturers in Asia to receive Third Party certification on recycling by US GreenCircle Certified.

2017

较早获得第三方认证
HPD 产品健康声明
Proud to be one of the first carpet manufacturers worldwide to obtain a Verified HPD.

2021

推出空灵纱 - 东帝士自主研发的里程碑
Marking a milestone in Tuntex's research and development with the launch of aircell™.

2023

对地毯底背系统进行颠覆性升级，全新 LuxCushion™ 莱适底背重新定义舒适
Achieving revolutionary upgrade to backing system with the release of LuxCushion™.

创新 Innovative

Tuntex 东帝士一直在创新路上前行，每一次技术的革新与进步都是有价值性的提升，正是这种进取的精神激励着东帝士勇于挑战，敢于改变，不断创新。

Tuntex is always on the look out for technological opportunities that can bring more value to our partners and customers. For Tuntex, it is the mindset of constantly challenging ourselves, and reshaping what we think we know.

技术
TECHNOLOGY

设计
DESIGN

可持续
SUSTAINABLE

01 耐可隆尼龙纱线

nexlon™

nexlon™耐可隆纱线是东帝士自主研发推出的产品。运用原着染技术，通过原始材料混合熔融再抽丝的方式，提高纱线的色牢度。历久弥新，保证室内环境舒适美观。

nexlon™ is a premium quality nylon fiber developed and manufactured exclusively by Tuntex. By applying Solution Dyed Technology, it mixes and melts colors together. nexlon™'s consistent and solid color fastness ensures long-time visual enjoyment.



02 莱适软底

LUXCUSHION™

LuxCushion™莱适软底是东帝士最新的软底底背系统。创造性地使用高弹性尼龙纱线作为主要材料，大大提高了地毯的支撑力和回弹性。在提升空间幸福感的同时，实现了舒适、健康与可持续发展的有机结合。

LuxCushion™ is a unique backing system released by Tuntex. By converting high resilience nylon fiber into unique backings, LuxCushion™ redefines the softness of carpets, taking performance and comfort experience to the next level. Underfoot comfort and true environmental benefits are finally here.



01 耐克隆尼龙纱线

nexlon™

Tuntex 东帝士是国内极少数具备一体化生产能力的企业，拥有自主研发的高端原着染色尼龙纱线 - nexlon™ 耐克隆。

Tuntex is one of a very few carpet manufacturers that are completely vertical, with our ability to manufacture in-house Solution Dyed Nylon - nexlon™.

Innovative

Tuntex's strong capabilities enable more types of yarns to be developed to meet the changing trends.

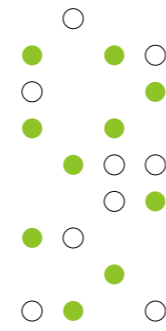
200+ Colors

Sustainable Solution

There are over 200 colors that can be provided by nexlon™ based on market demands.

nexlon™ is available for recycling to produce new yarn, backing, and carpets.

原着染色 Premium Solution Dyed



nexlon™ 耐克隆纱线采用原着染色技术制造，将色母粒与尼龙切片一同液化，再抽丝制成纤维，使纱线获得内外一致的纯色。因此，纱线具有优越的抗褪色性和耐洗性。

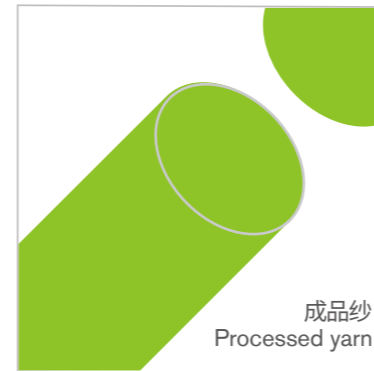
nexlon™ is manufactured using Solution Dyed Technology. This method mixes and melts colors together to achieve a consistent and solid color fastness. As a result, the yarn has excellent resistance to fading even using harsh cleaning methods.

尼龙切片 Nylon Chips

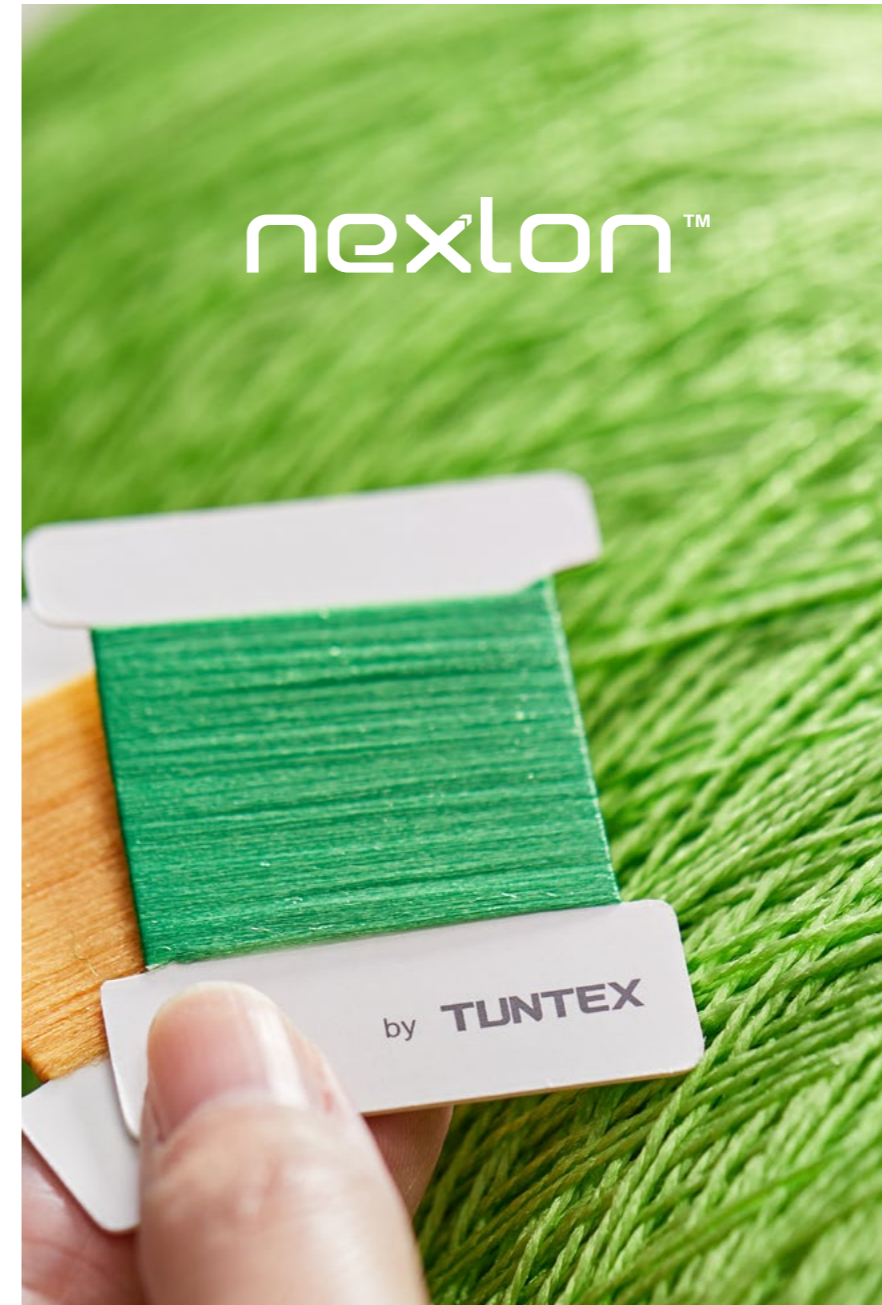


+

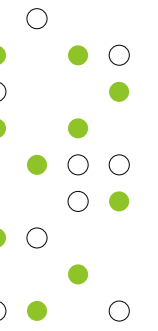
色母粒 Masterbatch



成品纱 Processed yarn



高色牢度 Outstanding Color Fastness



将地毯样品的一端用消毒液浸泡 30 分钟后的测试结果:

Soak one end of the carpet sample into the diluted bleach water for 30 minutes:

原着染色纱 Solution Dyed

白纱 White Yarn



浸泡前 Before



浸泡前 Before



浸泡后 After



浸泡后 After

经实验证明，经常用消毒水喷洒，Tuntex 东帝土地毯不会出现颜色变化，历久弥新，确保室内环境舒适美观。

Our study found that even using a bleach solution, Tuntex carpet always has excellent color fastness. It ensures that the product can be used for a long time and remain beautiful, bringing lasting fresh visual enjoyment.



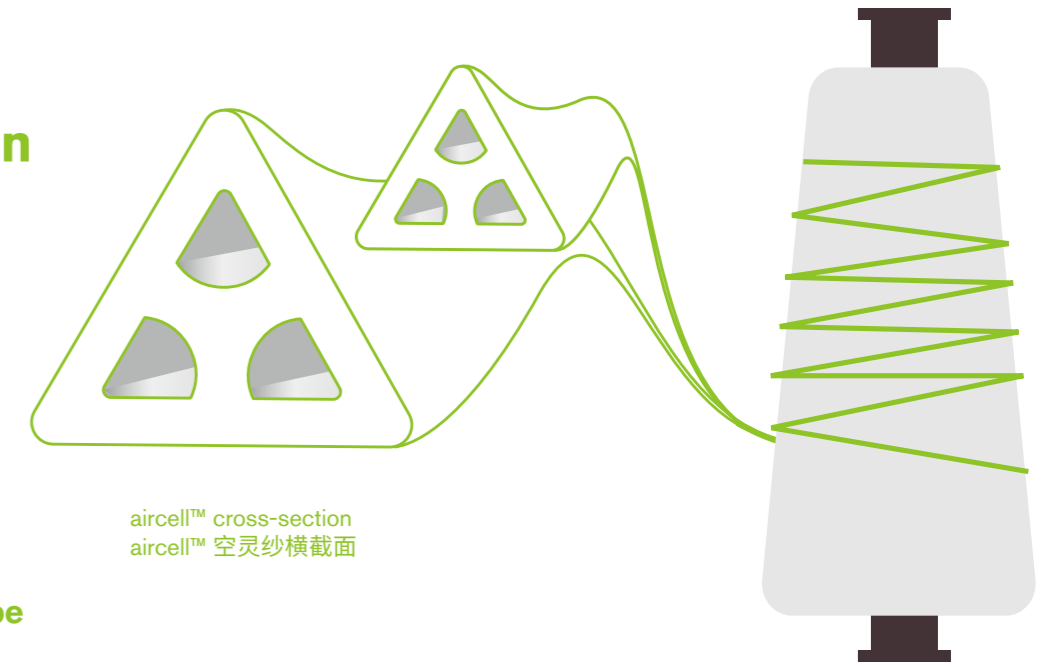
创新研发 R&D

aircell™ 空灵纱是由东帝士自主研发和生产的中空长丝纤维。稳定的三角形横截面、蓬松的中空结构和弹力十足的 Y 形支撑进一步优化了地毯的性能，更易维护和持久耐用。

aircell™ is an innovative hollow filament fiber that is developed and manufactured exclusively by Tuntex. The combination of the Triangular cross-section, Hollow structure and Y-Shaped configuration provides enhanced performance, easier maintenance and long lasting durability to our carpets.



独特的纱线形状 Unique Yarn Configuration



aircell™ cross-section
aircell™ 空灵纱横截面



* 三角结构
Triangular Shape



* 中空结构
Hollow Structure

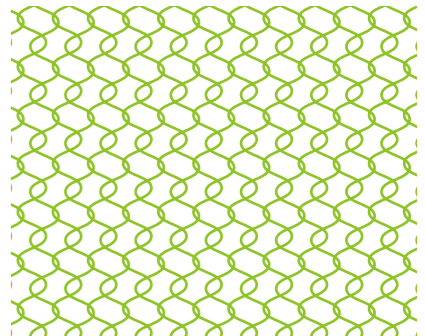


* Y 形结构
Y-Shape Structural Support

优化聚合物结构 Enhanced Polymer



* 普通纱线聚合物结构
Polymer Structure For Typical Yarn



* 优化聚合物结构，增强纱线回弹性
Enhanced Polymer To Achieve More Bounce Effect

aircell™ 空灵纱的横截面被特殊设计成三角形结构，兼具光滑表面。中空结构由 3 个均匀的孔洞组成，可以将空气存储其中，增加纱线纤维的容积和空间质感。

The cross-section of aircell™ filament is designed as a triangular structure with smooth surface. The hollow structure comes in a three-hole shape, allowing air to be trapped in the voids, increasing the overall volume of the filament.

与 nexlon™ 耐可隆的所有产品一样，aircell™ 空灵纱采用优质原着染色尼龙纱线耐可隆，但是其聚合物分子结构经过优化调整，显著提升纱线回弹能力，从而为地毯提供更好的回弹性和耐用性。

aircell™ utilizes a premium solution dyed nylon, the same as all nexlon™ products, but the molecular structure of its polymer has been modified to enhance its spring effect, and hence achieve better resilience and durability for the carpets.

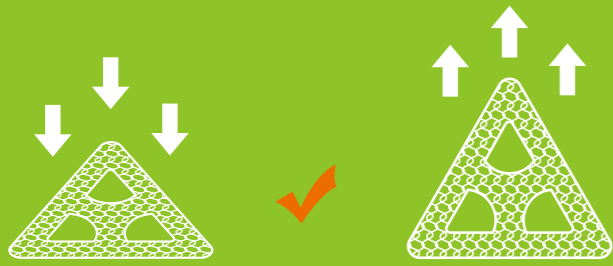


aircell™
空灵纱

More Bulk
More Bounce
More Benefit

技术优势 Technical Strength

提高回弹性 Improved Resilience



* Y型结构，材料升级，回弹力更强
Enhanced structure results in better resilience

增加蓬松度 Increased Bulkiness



* 相同重量，aircell™ 体积更大更蓬松
At same weight, aircell™ provides more volume than typical yarn

减少尘土积聚 Soil Releasing



* 光滑表面，有效减少尘土积聚
Smooth surface, prevent soil accumulation

持久如新 Soil Hiding



* 折射光线，降低尘土可见性
Light is reflected, lower soil visibility

主要特点 Key Benefits

更好的性能 Better Performance

一直以来，Tuntex 东帝士致力于生产高品质的产品，追求卓越的性能。aircell™ 空灵纱的研发与使用，提升了东帝土地毯的蓬松度和回弹性，为客户提供比以往更优质的产品与体验。

Tuntex is always committed to a high-quality standard and premium performance. With aircell™, Tuntex is able to further improve its carpet performance by increasing the bulkiness and resilience significantly, providing customers with better products than ever before.

维护更轻松 Easier Maintenance

aircell™ 空灵纱光滑的表面可以很大程度减少脏污的积累，同时基于纤维的中空结构，进一步降低了脏污的可见性。毯面底层积累的脏污容易清洁和维护。

As aircell™ can minimize soil accumulation, this reduces the chance of soil penetration into or beneath the fibers. Soil then stays on the surface, which makes cleaning and maintenance much easier for carpet users.

更持久耐用 Increased Durability

aircell™ 空灵纱独特的中空结构提升了纱线的回弹性，降低脏污的可见性，有利于保持地毯亮丽如新，保持毯面蓬松质感，延长地毯使用寿命。

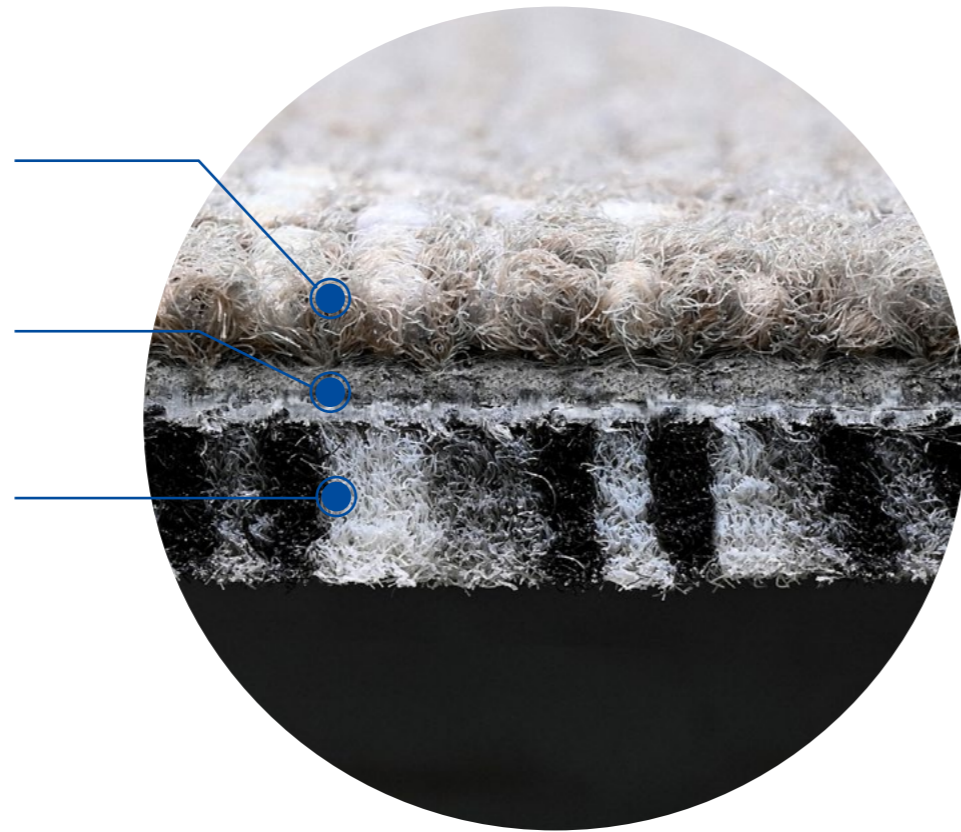
aircell™ features a unique hollow structure that improves resilience and reduces the appearance of soil, which helps carpet remain new longer, retain its bulkiness longer, and extend its usable life.

aircell™
空灵纱

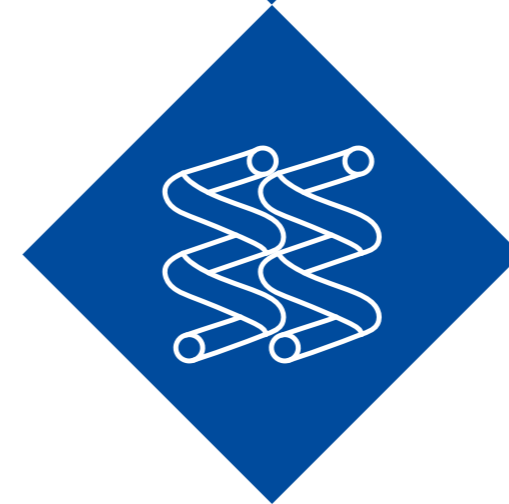
More Bulk
More Bounce
More Benefit

颠覆性创新底背 Revolutionary New Backing System

- 1** 毯面: nexlon™ 耐可隆高端原着染纱线
nexlon™ – premium solution dyed nylon
- 2** 强化玻璃纤维
Reinforced fiber glass
- 3** 底面: 高弹性莱适纱线
Repurposed high resilience nylon

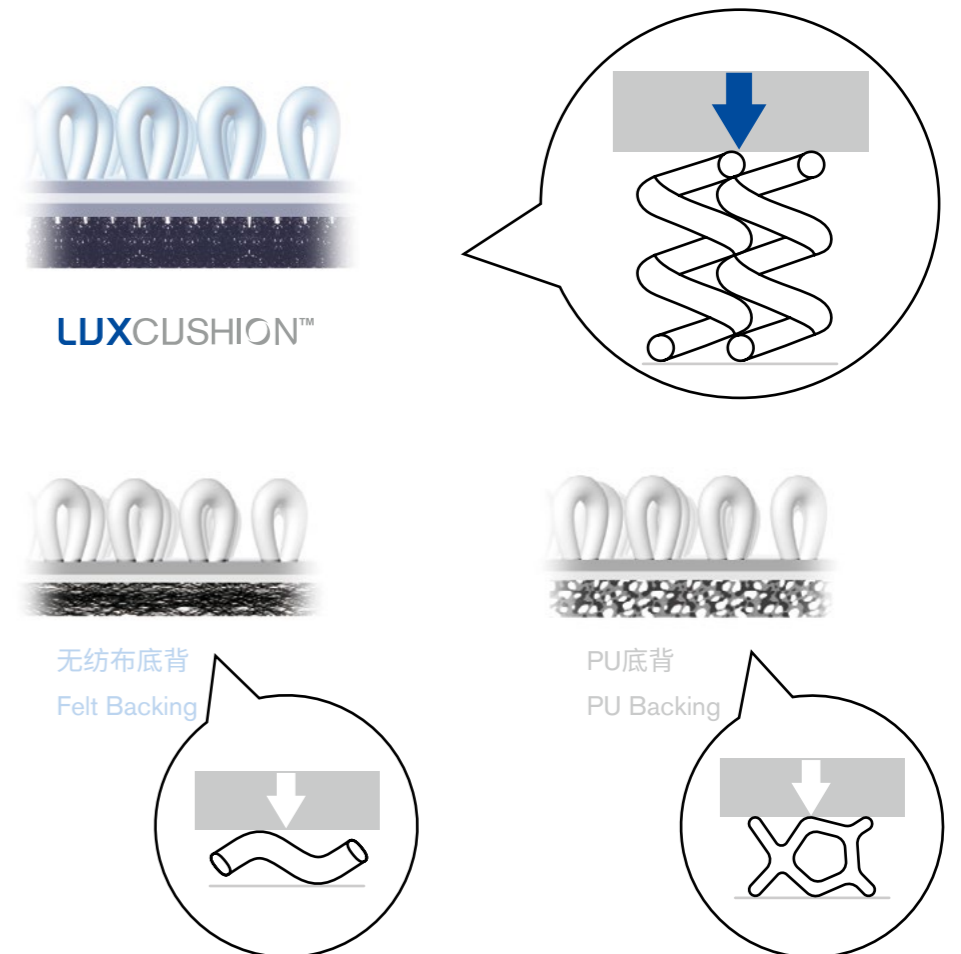


全新结构 Creative Backing Structure



与传统底背系统不同, LuxCushion™ 莱适软底创新采用高弹性莱适纱线, 利用地毯生产过程中的废纱资源, 采用簇绒工艺, 让具有高蓬松性的纱线以3D立体结构紧密呈现, 相比传统的针刺无纺布底背或是树脂发泡底背, 其支撑性、回弹性更好, 纱线如同一根根“小弹簧”, 为地面材料带来更为舒适的踩踏体验。

Different from typical backing systems, LuxCushion™ repurposes high resilience nylon that is a byproduct PU yarn wasted during carpet manufacturing process. Compared to typical felt or foam backing, LuxCushion™ shows a superior resilience performance thanks to its unique 3D structure. Tufted like "springs", LuxCushion™ provides better underfoot comfort for indoor environment.



全新软底科技 双层夹心设计 Patented Technology Unique Sandwich Design

莱适软底
LUXCUSHION

专利号 the Patent Number
Chinese Patent No.: ZL 202020360039.5
United States Patent No.: US 11,668,046B2

为舒适而生

Design For Comfort



柔软舒适全面提升

Underfoot Comfort

LuxCushion™ 莱适软底使用高弹性尼龙纱线, 提供充分的缓冲空间, 有效减少行走时足底压力。地毯舒适度提升约 **30.2%**, 减少 **19.8%** 左右的肌肉酸疼与疲惫, 带来前所未有的舒适使用感。

The usage of high resilience nylon allows LuxCushion™ to offer adequate space to squeeze and bounce back with firm foot supports. It improves comfort level by about 30.2% and reduces foot fatigue by about 19.8%.



有效降噪

耳边清静更舒适

Acoustic Comfort

LuxCushion™ 莱适软底采用高弹性尼龙纱线作为底背材料, 其致密厚实的纤维结构能够有效改善空间声音质量, 根据相关测试, 其对撞击声改善量达 **37** 分贝, 比普通底背高出 **50%**, 能达到一般 LVT 的 **5** 倍; 吸音系数则达 **0.40**。

With the thick layers of nylon fibers, LuxCushion™ disperses the unwanted noise in the environment. It has been tested and found to be very effective in reducing transmitted impact sound by 37dB, which is 5 times better than LVT and 50% better than typical backing. In addition, LuxCushion™ has a sound absorption coefficient of 0.40, indicating impressive sound absorption capabilities.



出色回弹性

长久舒适有保证

Long-lasting Comfort

LuxCushion™ 莱适软底在模拟极端人流测试后的恢复率为 **91.7%**, 回弹出色, 柔韧耐用。

LuxCushion™ possesses an excellent recovery rate of 91.7% after an extremely heavy traffic test. The comfort level has been developed to support our wellness goals in the long run.



健康升级

Indoor Comfort

LuxCushion™ 莱适软底结构简化, 制造过程中不添加塑化剂, TVOC 也符合绿色环保标准, 并加入特殊工艺处理。可有效减少健康隐患的滋生和存在, 创造更安全、更健康的室内环境。

The unique structure of LuxCushion™ requires fewer materials during production, is plasticizer-free, and has very low TVOC. Special treatments are added to further enhance this product. LuxCushion™ helps to mitigate these health hazards and create a safer and healthier indoor environment.

为未来而生

Design For Future

一直以来, Tuntex 东帝士始终通过不断创新减少污染、永续发展这一理念也贯穿于 LuxCushion™ 莱适软底的研发中。

Tuntex has always been seeking green manufacturing through continuous innovations. The concept of sustainable development also runs through the research and development of LuxCushion™.

TUNTEX™



3R 运动倡导者
CALL FOR 3R

Reuse
再利用

Reduce
再减少

Recycle
再循环

Tuntex 东帝士在生产过程中直接收集这些纱线废料, 转化成资源并将它们直接用在 LuxCushion™ 莱适软底的底背上, 实现对生产废料最大限度的再利用。

Tuntex collects directly and converts these wasted yarns into available materials for the production of LuxCushion™ which maximizes the resource efficiency.

毯面和底背均 100% 可回收, 形成地毯生产与回收的绿色循环, 实现地毯行业的可持续发展。

Both the face yarn and the backing are 100% recyclable to create the green cycle of carpet production.

LuxCushion™ 莱适软底的底背采用高弹性莱适纱线, 收集生产过程中废纱资源, 在原厂经过简单处理即可直接制成底背, 省略了传统回收过程需要消耗的大量能源和资源, 也减少了碳排放, 实现了节能减排。

LuxCushion™ repurposes high resilience nylon that is a byproduct from yarn wasted during the carpet manufacturing process and directly reproduces into the backing in the original factory. Energy, resources and carbon emissions that were required in the past have been decreased to protect the environment.

01


Prestige Line

Prestige 是东帝士艺术、设计与工艺的集大成产品。我们从鲜明与极富个性的艺术风格中获取灵感，通过对形式的拆解和色彩的运用，使用高端工艺将其呈现在地毯上。Prestige 代表着东帝士的最高水准，是品牌的匠心之作。

Prestige is the culmination of Tuntex art, design and craftsmanship. We carefully considered the concepts, aesthetics, styles and colors, bringing together to create excellence carpets. Indeed, Prestige is viewed as the very best of the brand.

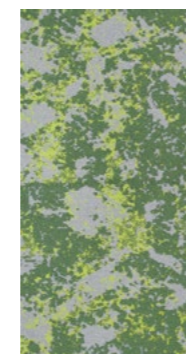
CONTENTS



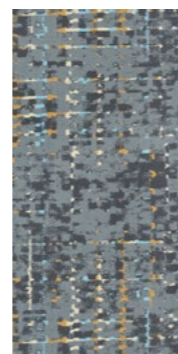
Day Dreamer
LC02
P 29 



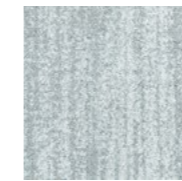
Dream Time
LC03
P 30



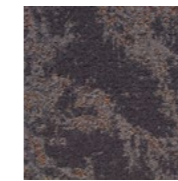
Green Field
LC05
P 31



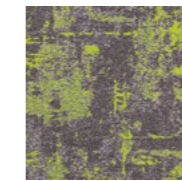
Field of Dreams
LC06
P 32



Torrent
T601
P 33



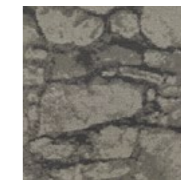
Bird's-eye on Metro
T700G
P 34



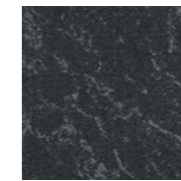
Space Cloud
T707G
P 35



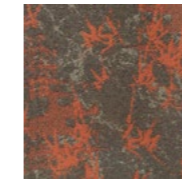
Color Dew
T708G
P 36



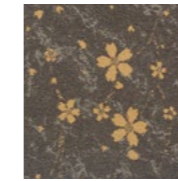
Flagstone
T709G
P 37



Base
T710G
P 39



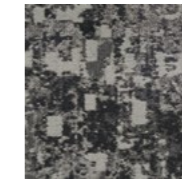
Bamboo
T711G
P 39



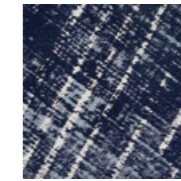
Blossom
T712G
P 39



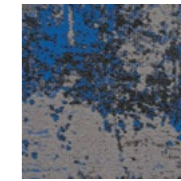
Vintage
T716G
P 41



Sq Cloud
T717G
P 42



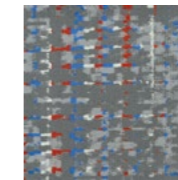
Weave Plus
T718G
P 43



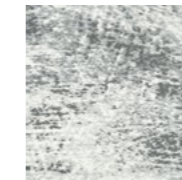
Free Form
T719G
P 44



Crystalline
T721G
P 45



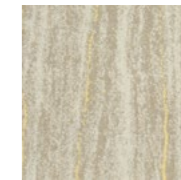
Times Square
T722G
P 46




1933 Shanghai
T723G
P 47



Moonwalk
T725
P 48



Forest View
T726G
P 49 



Marble V261
P 51



Porcelain V263
P 52



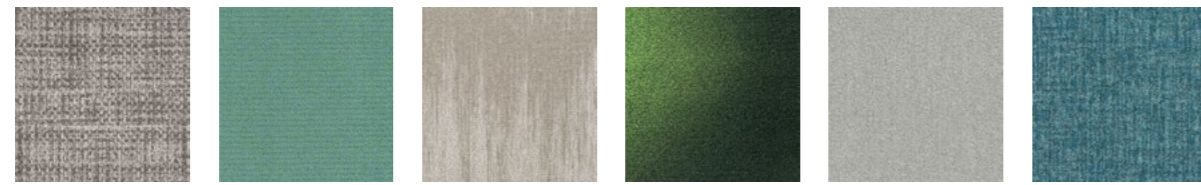
Formations - V271
P 53



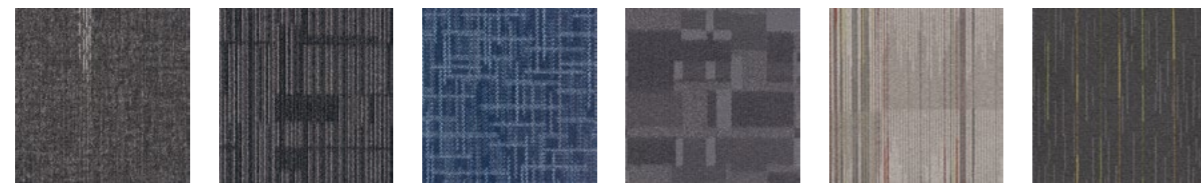
Formations - V272
P 53



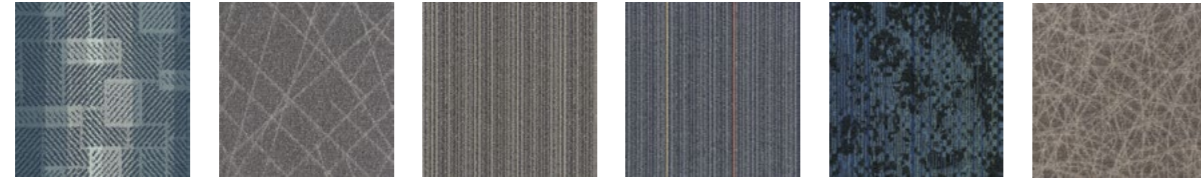
Formations - V273
P 53



Linen T102 P 61
 Milano T103 P 63
 Pulse T105 P 64
 Light Chaser T106 P 65
 Street View T107 P 66
 ReGenerate T108 P 67



ReGenerate Plus T108+ P 67
 Circuit T613 P 69
 Criss-cross T617 P 70
 The Building Blocks T625 P 71
 Spectrum T629 P 72
 Sonic T637 P 73



Inherited T656 P 74
 Pick Up Sticks T667 P 75
 Classic Track T660 P 77
 Track Line T661 P 77
 Bayou T662 P 79
 Skate T663 P 80



Granite T665 P 81
 Montage T667 P 82
 Shadow T670 P 83
 In-motion T671 P 84
 Banyan T672 P 85
 Time T673 P 86



Glacier T675 P 87
 Track Connection T690 P 77

02

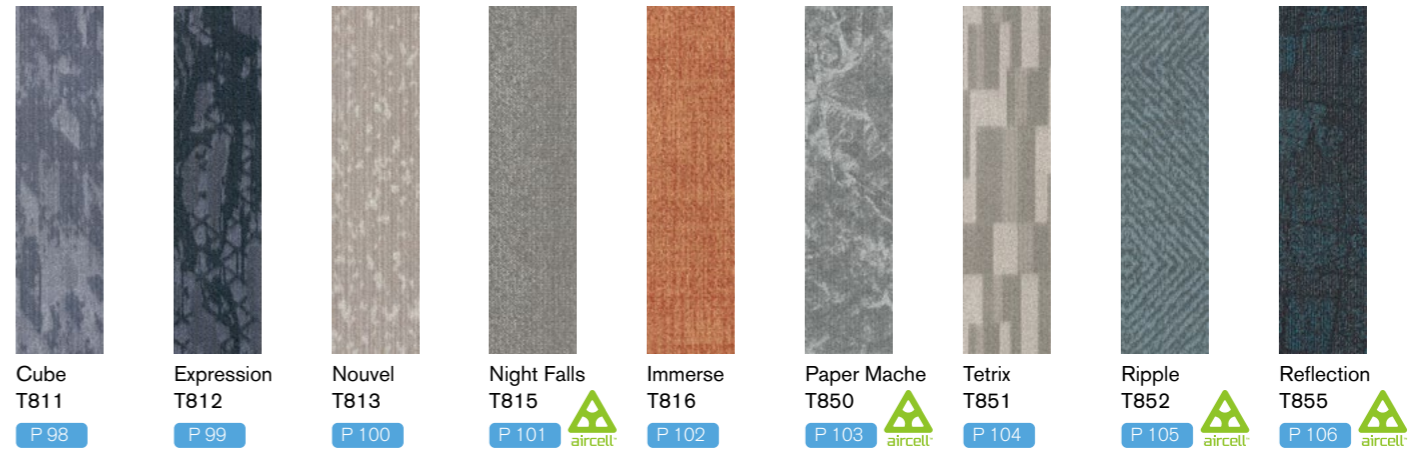
Premium Line

Premium 是为室内空间和专业客户打造的诚意之作。它汇聚了集美学价值、实用性和可持续性于一体的高端优质产品，受到广大客户的青睐。

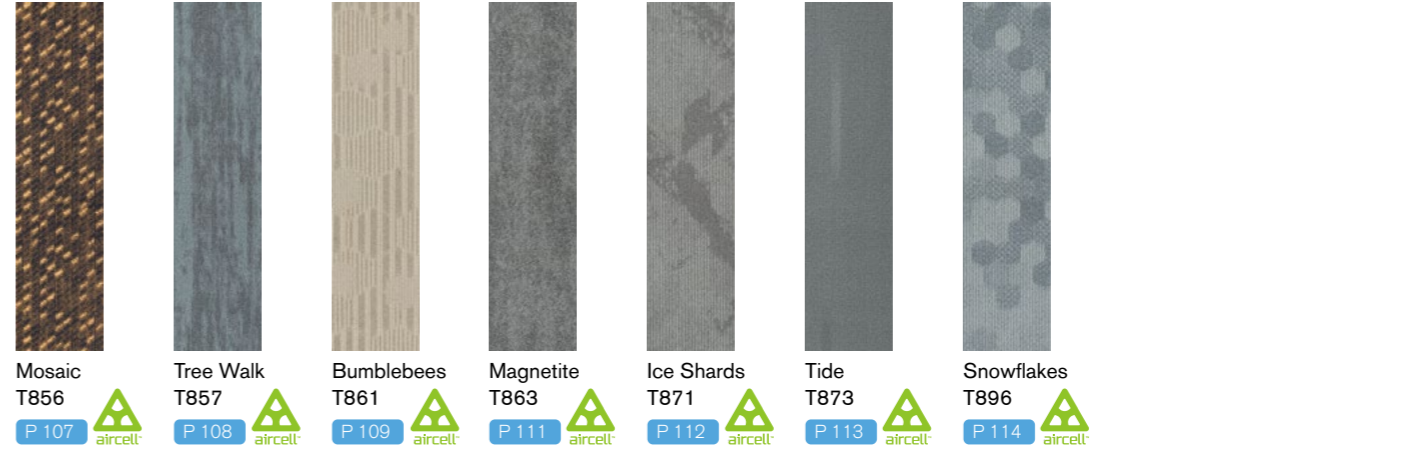
Premium is a sincere work created for indoor spaces and professional clients. It is a collection of high-end and high-quality products that combine aesthetic value, practicality, and sustainability, favored by a large number of customers.



Boardwalk T800 P 89
 Color Zip T801 P 90
 City Map T803 P 91
 Mist T805 P 92
 Track 25 T806 P 93
 Sunshower T807 P 94
 Tassels T808 P 95
 Color Stroke T809 P 96
 Abstract T810 P 97



Cube T811 P 98
 Expression T812 P 99
 Nouvel T813 P 100
 Night Falls T815 P 101
 Immerse T816 P 102
 Paper Mache T850 P 103
 Tetrix T851 P 104
 Ripple T852 P 105
 Reflection T855 P 106



Mosaic T856 P 107
 Tree Walk T857 P 108
 Bumblebees T861 P 109
 Magnetite T863 P 111
 Ice Shards T871 P 112
 Tide T873 P 113
 Snowflakes T896 P 114

01

PRESTIGE LINE

优雅设计，高端工艺，奏响空间交响曲
High-end quality carpets with exclusive designs for luxurious spaces



Day Dreamer	LC02	29
Dream Time	LC03	30
Green Field	LC05	31
Field of Dreams	LC06	32
Torrent	T601	33
Bird's-eye on Metro	T700G	34
Space Cloud	T707G	35
Color Dew	T708G	36
Flagstone	T709G	37
Base	T710G	39
Bamboo	T711G	39
Blossom	T712G	39
Vintage	T716G	41
Sq Cloud	T717G	42
Weave Plus	T718G	43
Free Form	T719G	44
Crystalline	T721G	45
Times Square	T722G	46
1933 Shanghai	T723G	47
Moonwalk	T725	48
Forest View	T726G	49
Marble	V261	51
Porcelain	V263	52
Pastoral	V271	53
Industrial	V272	54
Formations	V273	55

TUNTEX PRESTIGE FOR LUXURY SPACES

Tuntex 高端地毯系列奢华空间首选

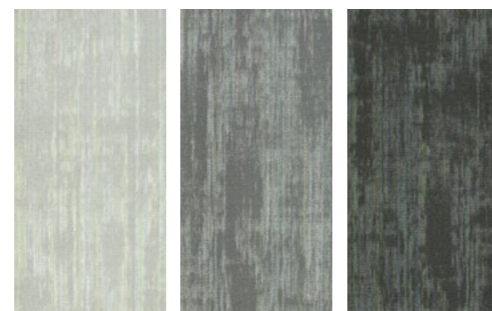
地面犹如一面镜子能映射出空间的氛围，而地毯的优雅之美能为空间构建更多人文雅趣。
Tuntex Prestige 是东帝士艺术、设计与工艺的集大成产品，使用高端工艺，创造更美观、安全和健康的室内环境。

Flooring reflects the space ambiance like a mirror, and the carpet with elegant beauty can bring more aesthetic and cultural presence. Tuntex Prestige is the culmination of our art, design, and expertise, using high-end craftsmanship to create a more pleasing, safe, and healthy indoor environment.

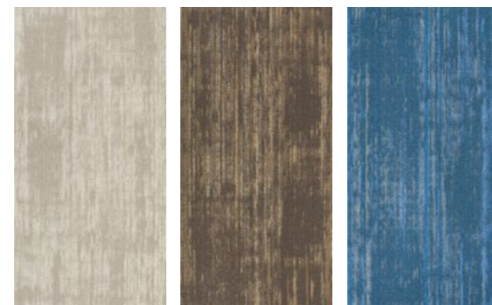


LC0204 / LC0205 Ashlar

LC02 DAY DREAMER



LC0201 Sand Dollar
LC0202 Fossil
LC0203 Iron

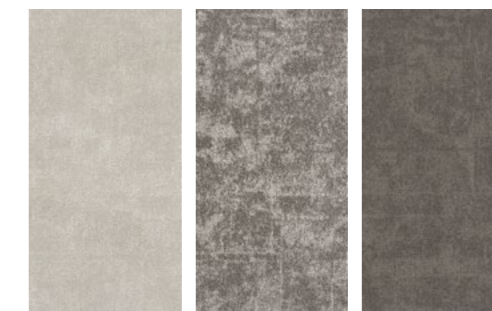


LC0204 Tan
LC0205 Coffee
LC0206 Stone

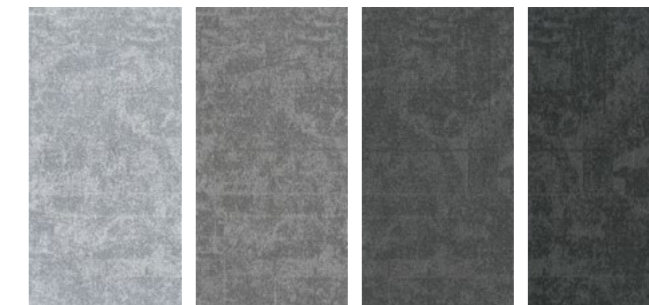


LC0304 / LC0308 / LC0310 Ashlar

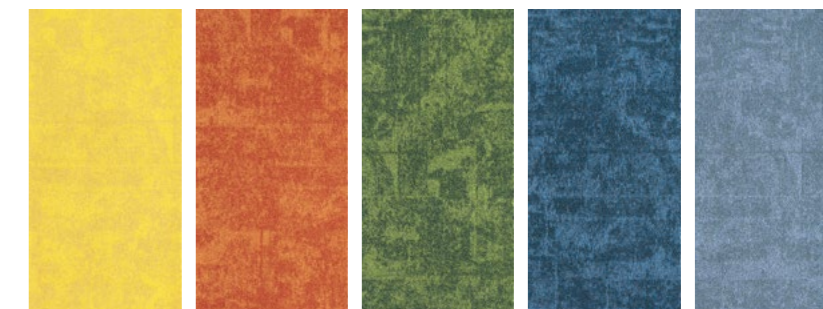
LC03 DREAM TIME



LC0301 Oat
LC0302 Hazel Wood
LC0303 Ash



LC0304 Cloud
LC0305 Fossil
LC0306 Lead
LC0307 Charcoal



LC0308 Butter
LC0309 Fire
LC0310 Crocodile
LC0311 Aegean
LC0312 Stone



Face Yarn 纤维成分: nexlon™ Premium Solution Dyed Nylon featured with aircell
耐可隆原着染尼龙 含 aircell 空灵纱

Construction 毯面结构: Hi / Mid / Lo Loop 高中低圈绒

Pile Height 织毯毛高: 6.0 - 3.5 mm

Tile Size 成品规格: 500 mm x 1000 mm

Standard Backing 标准化附底: LUXCUSHION™ 莱适软底

Foot Traffic 流量级别: Heavy

Treatment 附加工艺: STAINSHIELD™ 特殊防污处理 SOILGUARD™ 特殊防尘处理
ECOFRESH™ 空气净化功能 MICROSHIELD™ 抗菌功能

Face Yarn 纤维成分: nexlon™ Premium Solution Dyed Nylon featured with quartz
耐可隆原着染尼龙 含 quartz 石英纱

Construction 毯面结构: Hi / Mid / Lo Loop 高中低圈绒

Pile Height 织毯毛高: 5.5 - 3.0 mm

Tile Size 成品规格: 500 mm x 1000 mm

Standard Backing 标准化附底: LUXCUSHION™ 莱适软底

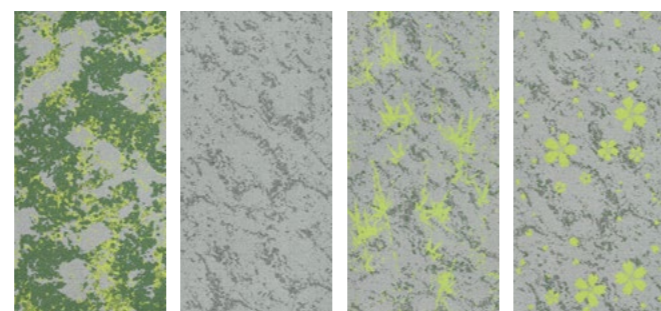
Foot Traffic 流量级别: Heavy

Treatment 附加工艺: STAINSHIELD™ 特殊防污处理 SOILGUARD™ 特殊防尘处理
ECOFRESH™ 空气净化功能 MICROSHIELD™ 抗菌功能



LC0510 / LC0511 Herringbone

LC05 GREEN FIELD



LC0503
Moss

LC0510
Base

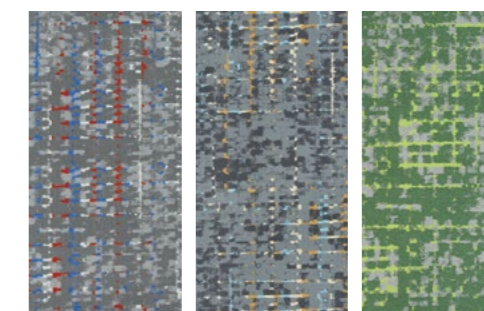
LC0511
Bamboo

LC0512
Blossom



LC0604 Ashlar

LC06 FIELD OF DREAMS



LC0604
Fantasy

LC0605
Reverie

LC0609
Fairyland

Face Yarn 纤维成分: nexlon™ Premium Solution Dyed Nylon
耐可隆原着染尼龙

Construction 毯面结构: Multi Hi / Lo Loop 多段高低圈绒

Pile Height 织毯毛高: 7.0 - 5.0 mm

Tile Size 成品规格: 500 mm x 1000 mm

Standard Backing 标准化附底: LUXCUSHION™ 莱适软底

Foot Traffic 流量级别: Heavy

Treatment 附加工艺: STAINSHIELD™ 特殊防污处理 SOILGUARD™ 特殊防尘处理
ECOFRESH™ 空气净化功能 MICROSHIELD™ 抗菌功能

Face Yarn 纤维成分: nexlon™ Premium Solution Dyed Nylon
耐可隆原着染尼龙

Construction 毯面结构: Multi Hi / Lo Loop 多段高低圈绒

Pile Height 织毯毛高: 9.0 - 4.5 mm

Tile Size 成品规格: 500 mm x 1000 mm

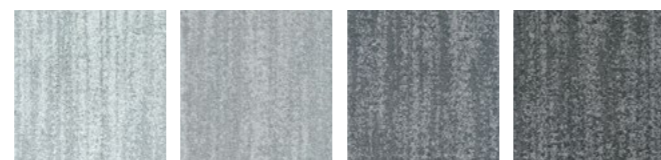
Standard Backing 标准化附底: LUXCUSHION™ 莱适软底

Foot Traffic 流量级别: Heavy

Treatment 附加工艺: STAINSHIELD™ 特殊防污处理 SOILGUARD™ 特殊防尘处理
ECOFRESH™ 空气净化功能 MICROSHIELD™ 抗菌功能



T601 TORRENT



T60101 Cloud T60107 Shadow T60102 Slate T60103 Pebble



T60104 Sand Dollar T60105 Grey T60106 Umber

T60105 Brick

Face Yarn 纤维成分: nexlon™ Premium Solution Dyed Nylon
耐可隆原着染尼龙

Construction 毯面结构: High Cut Low Loop 高割低圈

Pile Height 织毯毛高: 8.0 / 5.0 mm

Tile Size 成品规格: 500 mm x 500 mm

Standard Backing 标准化附底: TUNTEX Duraback

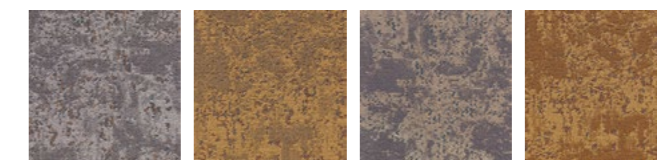
Foot Traffic 流量级别: Moderate

Treatment 附加工艺: **STAINSHIELD™** 特殊防污处理 **SOILGUARD™** 特殊防尘处理

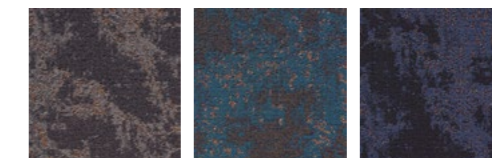


T7006G Brick

T700G BIRD'S-EYE ON METRO



T7001G Mist T7002G Landmark T7003G Urban Jungle T7004G Corner



T7005G Night Shadow T7006G Watertown T7008G Forbidden City

Face Yarn 纤维成分: nexlon™ Premium Solution Dyed Nylon
耐可隆原着染尼龙

Construction 毯面结构: Multi Hi / Lo Loop 多段高低圈绒

Pile Height 织毯毛高: 5.5 - 3.5 mm

Tile Size 成品规格: 500 mm x 500 mm

Standard Backing 标准化附底: TUNTEX Duraback

Foot Traffic 流量级别: Heavy

Treatment 附加工艺: **STAINSHIELD™** 特殊防污处理 **SOILGUARD™** 特殊防尘处理
ECOFRESH™ 空气净化功能 **MICROSHIELD™** 抗菌功能



T7071G Quarter-Turn

T707G SPACE CLOUD



T7071G Saturn
T7072G Tornado
T7073G Jupiter



T7074G Lime Halo
T7075G Mars
T7077G Aurora

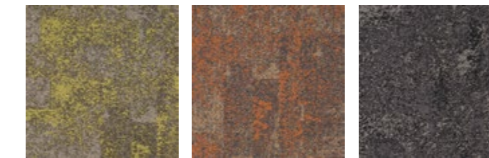


T7081G Ashlar

T708G COLOR DEW



T7081G Chocolate
T7082G Crystal
T7083G Espresso



T7084G Green Apple
T7085G Blaze Orange
T7086G Smokey

Face Yarn 纤维成分: nexlon™ Premium Solution Dyed Nylon
耐可隆原着染尼龙

Construction 毯面结构: Multi Hi / Lo Loop 多段高低圈绒

Pile Height 织毯毛高: 5.0 - 3.0 mm

Tile Size 成品规格: 500 mm x 500 mm

Standard Backing 标准化附底: TUNTEX Duraback

Foot Traffic 流量级别: Heavy

Treatment 附加工艺: **STAINSHIELD™** 特殊防污处理 **SOILGUARD™** 特殊防尘处理
ECOFRESH™ 空气净化功能 **MICROSHIELD™** 抗菌功能

Face Yarn 纤维成分: nexlon™ Premium Solution Dyed Nylon featured with quartz
耐可隆原着染尼龙 含 quartz 石英纱

Construction 毯面结构: Multi Hi / Lo Loop 多段高低圈绒

Pile Height 织毯毛高: 5.0 - 3.0 mm

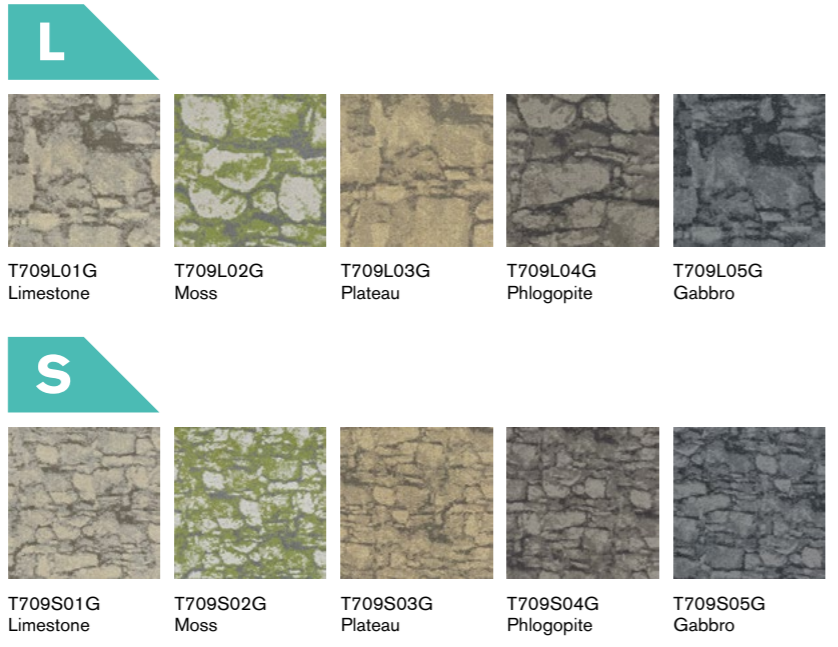
Tile Size 成品规格: 500 mm x 500 mm

Standard Backing 标准化附底: TUNTEX Duraback

Foot Traffic 流量级别: Heavy

Treatment 附加工艺: **STAINSHIELD™** 特殊防污处理 **SOILGUARD™** 特殊防尘处理
ECOFRESH™ 空气净化功能 **MICROSHIELD™** 抗菌功能

T709G FLAGSTONE

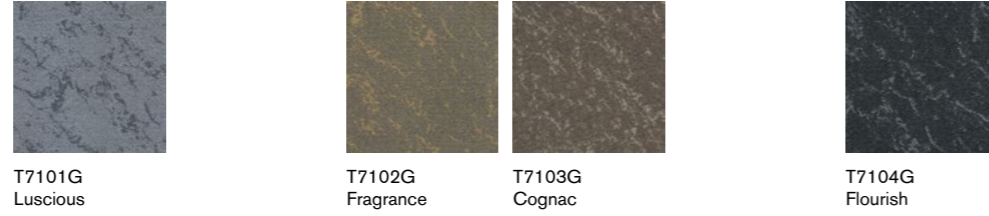


Face Yarn 纤维成分: nexlon™ Premium Solution Dyed Nylon
 耐可隆原着染尼龙
Construction 毯面结构: Multi Hi / Lo Loop 多段高低圈绒
Pile Height 织毯毛高: 6.5 - 3.0 mm
Tile Size 成品规格: 500 mm x 500 mm
Standard Backing 标准化附底: TUNTEX Duraback
Foot Traffic 流量级别: Heavy
Treatment 附加工艺: **STAINSHIELD™** 特殊防污处理 **SOILGUARD™** 特殊防尘处理
ECO FRESH™ 空气净化功能 **MICROSHIELD™** 抗菌功能



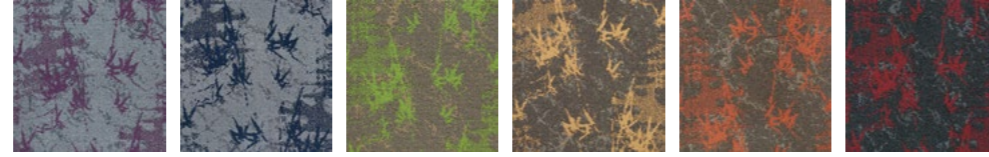
T709L04G / T709S04G Ashlar

T710G BASE



T711G BAMBOO

全花图案
full pattern

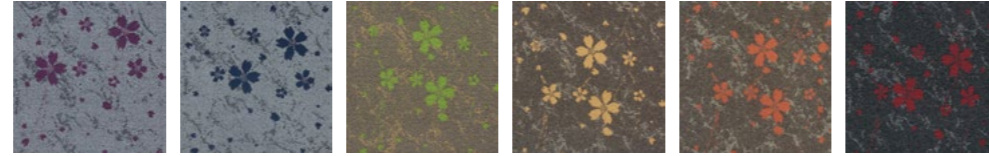


半花图案
half pattern

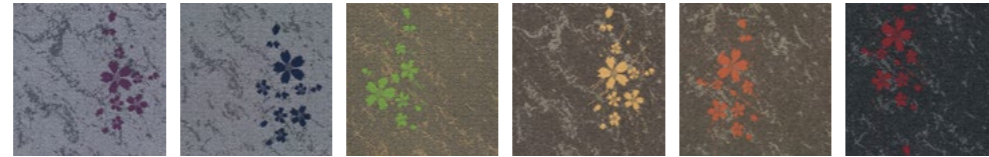


T712G BLOSSOM

全花图案
full pattern



半花图案
half pattern



Face Yarn 纤维成分:

nexlon™ Premium Solution Dyed Nylon
耐可隆原着染尼龙

Construction 毯面结构:

Multi Hi / Lo Loop 多段高低圈绒

Pile Height 织毯毛高:

6.0 - 4.0 mm

Tile Size 成品规格:

500 mm x 500 mm

Standard Backing 标准化附底:

TUNTEX Duraback

Foot Traffic 流量级别:

Heavy

Treatment 附加工艺:

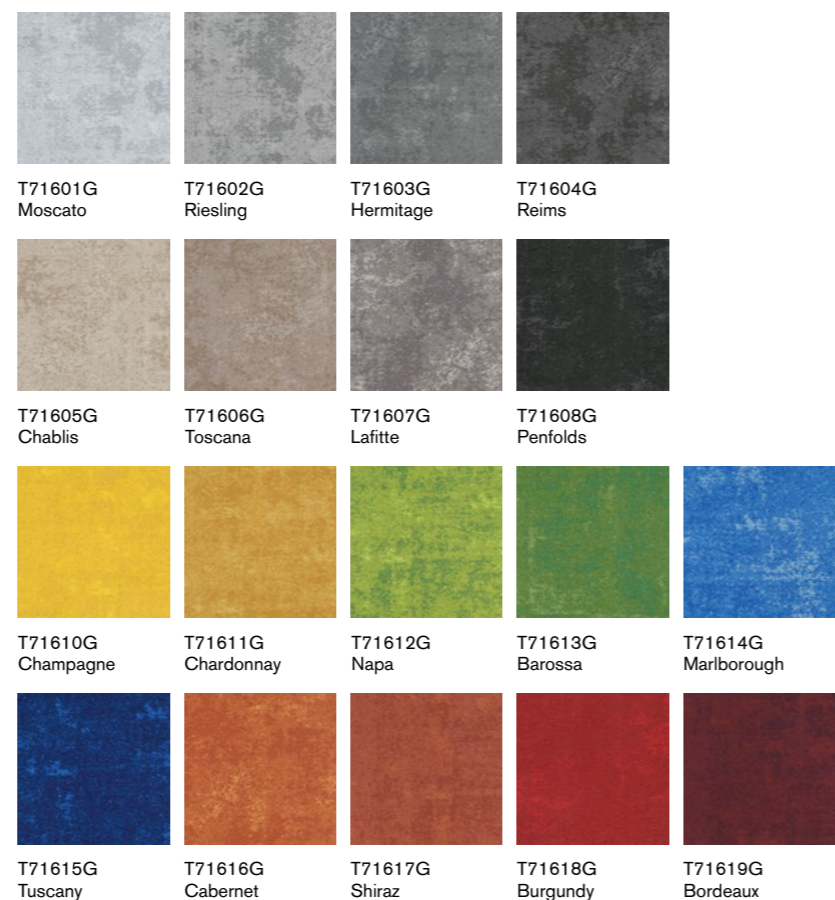
STAINSHIELD™ 特殊防污处理 **SOILGUARD™** 特殊防尘处理
ECOFRESH™ 空气净化功能 **MICROSHIELD™** 抗菌功能



T7104G / T711X45G / T711Y45G Brick



T716G VINTAGE



T71605G / T71606G / T71611G / T71612G Quarter-Turn

Face Yarn 纤维成分: Universal Fiber Solution Dyed Nylon
环球尼龙纱

Construction 毯面结构: Multi Hi / Lo Loop 多段高低圈绒

Pile Height 织毯毛高: 6.0 - 3.5 mm

Tile Size 成品规格: 500 mm x 500 mm

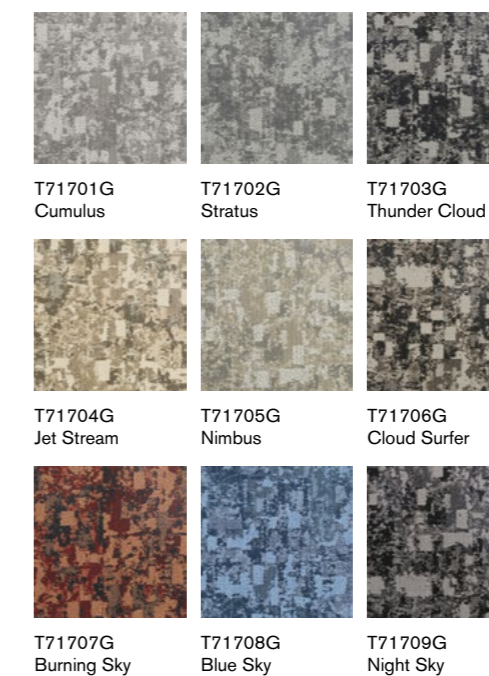
Standard Backing 标准化附底: TUNTEX Duraback

Foot Traffic 流量级别: Heavy

Treatment 附加工艺: **STAINSHIELD™** 特殊防污处理 **SOILGUARD™** 特殊防尘处理
ECOFRESH™ 空气净化功能 **MICROSHIELD™** 抗菌功能



T717G SQ CLOUD



T71705G / T71706G Ashlar

Face Yarn 纤维成分: nexlon™ Premium Solution Dyed Nylon featured with quartz
耐可隆原着染尼龙 含 quartz 石英纱

Construction 毯面结构: Multi Hi / Lo Loop 多段高低圈绒

Pile Height 织毯毛高: 4.0 - 2.5 mm

Tile Size 成品规格: 500 mm x 500 mm

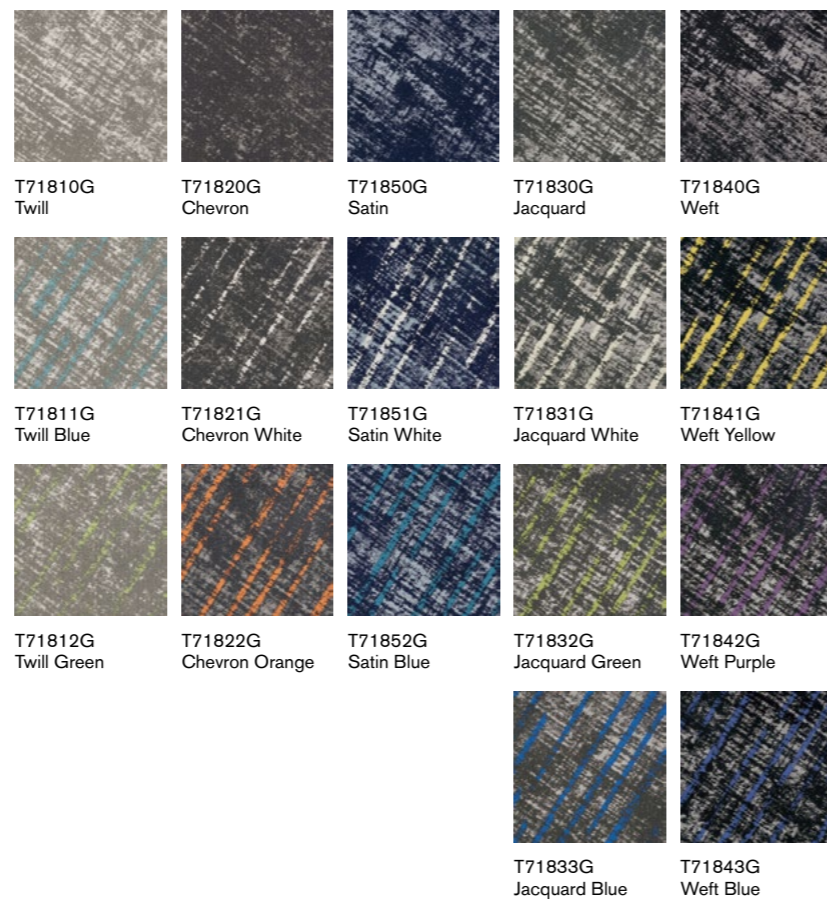
Standard Backing 标准化附底: TUNTEX Duraback

Foot Traffic 流量级别: Heavy

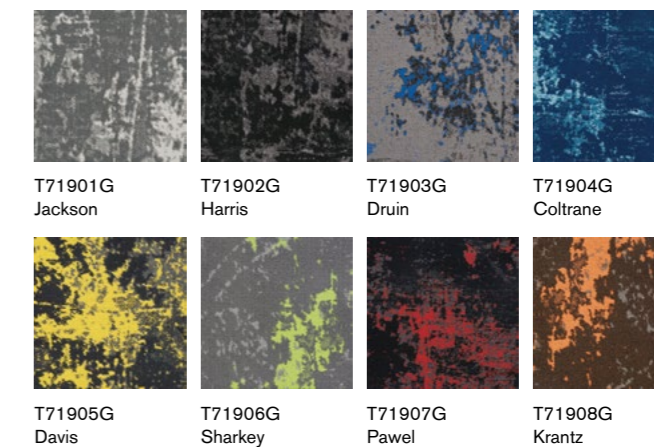
Treatment 附加工艺: **STAINSHIELD™** 特殊防污处理 **SOILGUARD™** 特殊防尘处理
ECOFRESH™ 空气净化功能 **MICROSHIELD™** 抗菌功能



T718G WEAVE PLUS



T719G FREE FORM



Face Yarn 纤维成分: nexlon™ Premium Solution Dyed Nylon
耐可隆原着染尼龙

Construction 毯面结构: Multi Hi / Lo Loop 多段高低圈绒

Pile Height 织毯毛高: 5.5 - 3.0 mm

Tile Size 成品规格: 500 mm x 500 mm

Standard Backing 标准化附底: TUNTEX Duraback

Foot Traffic 流量级别: Heavy

Treatment 附加工艺: **STAINSHIELD™** 特殊防污处理 **SOILGUARD™** 特殊防尘处理
ECOFRESH™ 空气净化功能 **MICROSHIELD™** 抗菌功能

Face Yarn 纤维成分: nexlon™ Premium Solution Dyed Nylon
耐可隆原着染尼龙

Construction 毯面结构: Multi Hi / Lo Loop 多段高低圈绒

Pile Height 织毯毛高: 5.5 - 3.5 mm

Tile Size 成品规格: 500 mm x 500 mm

Standard Backing 标准化附底: TUNTEX Duraback

Foot Traffic 流量级别: Heavy

Treatment 附加工艺: **STAINSHIELD™** 特殊防污处理 **SOILGUARD™** 特殊防尘处理
ECOFRESH™ 空气净化功能 **MICROSHIELD™** 抗菌功能



T72101G / T72102G Brick

T721G CRYSTALLINE



T72101G Ivory
T72102G Grit
T72103G Element
T72104G Lunar

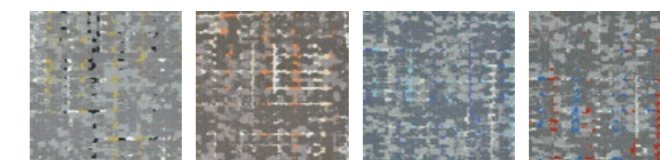


T72106G Ebony
T72107G Sapphire
T72108G Ruby
T72109G Argent

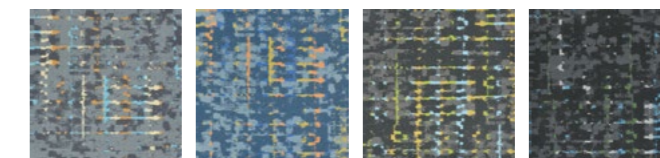


T72208G Quarter-Turn

T722G TIMES SQUARE



T72201G Long Island
T72202G Rockefeller
T72203G Soho
T72204G Central Park



T72205G Midtown
T72206G Yankee
T72207G Manhattan
T72208G Broadway

Face Yarn 纤维成分: nexlon™ Premium Solution Dyed Nylon featured with quartz
耐可隆原着染尼龙 含 quartz 石英纱

Construction 毯面结构: Multi Hi / Lo Loop 多段高低圈绒

Pile Height 织毯毛高: 5.0 - 3.0 mm

Tile Size 成品规格: 500 mm x 500 mm

Standard Backing 标准化附底: TUNTEX Duraback

Foot Traffic 流量级别: Heavy

Treatment 附加工艺: **STAINSHIELD™** 特殊防污处理 **SOILGUARD™** 特殊防尘处理
ECOFRESH™ 空气净化功能 **MICROSHIELD™** 抗菌功能

Face Yarn 纤维成分: nexlon™ Premium Solution Dyed Nylon
耐可隆原着染尼龙

Construction 毯面结构: Multi Hi / Lo Loop 多段高低圈绒

Pile Height 织毯毛高: 9.0 - 4.5 mm

Tile Size 成品规格: 500 mm x 500 mm

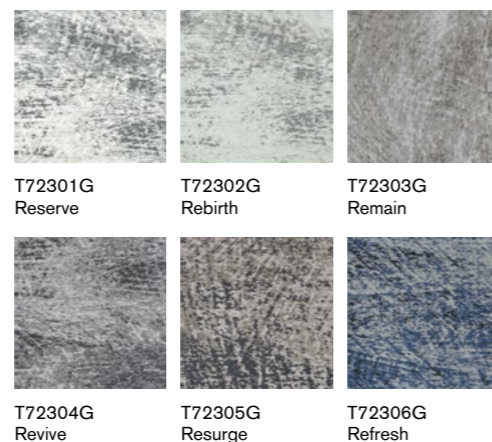
Standard Backing 标准化附底: TUNTEX Duraback

Foot Traffic 流量级别: Heavy

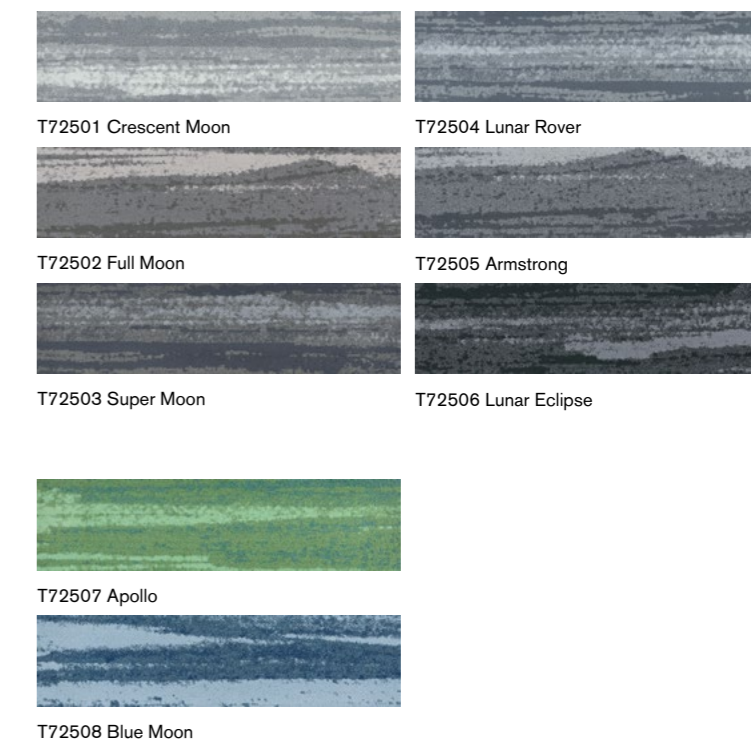
Treatment 附加工艺: **STAINSHIELD™** 特殊防污处理 **SOILGUARD™** 特殊防尘处理
ECOFRESH™ 空气净化功能 **MICROSHIELD™** 抗菌功能



T723G 1933 SHANGHAI



T725 MOONWALK



Face Yarn 纤维成分: Universal Fiber Solution Dyed Nylon (including Bio-based Content)
环球尼龙纱 (含生物源纤维)

Construction 毯面结构: Multi Hi / Lo Loop 多段高低圈绒

Pile Height 织毯毛高: 5.0 - 3.0 mm

Tile Size 成品规格: 500 mm x 500 mm

Standard Backing 标准化附底: TUNTEX Duraback

Foot Traffic 流量级别: Heavy

Treatment 附加工艺: **STAINSHIELD™** 特殊防污处理 **SOILGUARD™** 特殊防尘处理
ECOFRESH™ 空气净化功能 **MICROSHIELD™** 抗菌功能

Face Yarn 纤维成分: nexlon™ Premium Solution Dyed Nylon
耐可隆原着染尼龙

Construction 毯面结构: Multi Hi / Lo Loop with Tip-Shear Finish 多段高低圈绒 - 高圈剪毛

Pile Height 织毯毛高: 8.0 - 5.0 mm

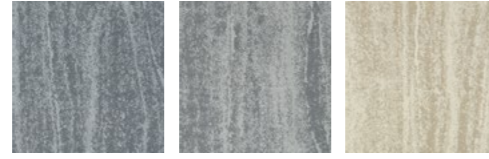
Tile Size 成品规格: 250 mm x 1000 mm

Standard Backing 标准化附底: TUNTEX Duraback

Foot Traffic 流量级别: Moderate

Treatment 附加工艺: **STAINSHIELD™** 特殊防污处理 **SOILGUARD™** 特殊防尘处理
ECOFRESH™ 空气净化功能 **MICROSHIELD™** 抗菌功能

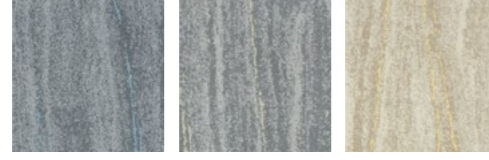
T726G FOREST VIEW



T72601G
Silver Birch

T72603G
White Oak

T72605G
Sprucewood



T72602G
Blue Mahoe

T72604G
Yellowheart

T72606G
Osage Orange



aircell™

Face Yarn 纤维成分:

nexlon™ Premium Solution Dyed Nylon featured with aircell
耐可隆原着染尼龙 含 aircell 空灵纱

Construction 毯面结构:

Multi Hi / Lo Loop 多段高低圈绒

Pile Height 织毯毛高:

9.0 - 5.0 mm

Tile Size 成品规格:

500 mm x 500 mm

Standard Backing 标准化附底:

TUNTEX Duraback

Foot Traffic 流量级别:

Heavy

Treatment 附加工艺:

STAINSHIELD™ 特殊防污处理 **SOILGUARD™** 特殊防尘处理
ECOFRESH™ 空气净化功能 **MICROSHIELD™** 抗菌功能



T72604G Brick



V261-1 / T72606G Ashlar

V261 MARBLE



V261-1
Travertine

V261-3
Mica

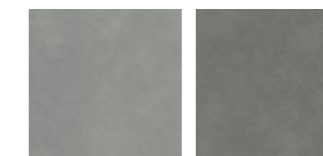
V261-4
Flint

Product Construction 产品结构:	Solid PVC Luxury Vinyl Tile
Overall Thickness 成品全厚:	5 mm
Size Available 成品规格:	500 mm W x 1000 mm L
Wear Layer Thickness/Type 耐磨层厚度 / 类型:	0.55 mm Solid PVC - Exceeds ASTM F 1700
Anti-Slip Layer 防滑层:	Allows Installation Without Glue 可无胶安装 (Moderate Traffic)
Edge Design 边缘设计:	Microbever
Water Resistance 防水性:	Waterproof 防水
UV-Cured Polyurethane CoatingUV 固化聚氨酯涂层:	X-SHIELD® Polyurethane Coating
Increased Dimensional Stability 尺寸稳定性:	Fiberglass 玻璃纤维
Installation Method 铺装方式:	Loose Lay/Perimeter Adhesion 区域粘胶
Recommended Adhesive 推荐的施工胶:	TX-500



V263-1 Monolithic / T71602G Brick

V263 PORCELAIN



V263 -1
Magnasite

V263 -2
Limestone

Product Construction 产品结构:	Solid PVC Luxury Vinyl Tile
Overall Thickness 成品全厚:	5 mm
Size Available 成品规格:	500 mm W x 500 mm L
Wear Layer Thickness/Type 耐磨层厚度 / 类型:	0.55 mm Solid PVC - Exceeds ASTM F 1700
Anti-Slip Layer 防滑层:	Allows Installation Without Glue 可无胶安装 (Moderate Traffic)
Edge Design 边缘设计:	Microbever
Water Resistance 防水性:	Waterproof 防水
UV-Cured Polyurethane CoatingUV 固化聚氨酯涂层:	X-SHIELD® Polyurethane Coating
Increased Dimensional Stability 尺寸稳定性:	Fiberglass 玻璃纤维
Installation Method 铺装方式:	Loose Lay/Perimeter Adhesion 区域粘胶
Recommended Adhesive 推荐的施工胶:	TX-500

V270 FORMATIONS



V271-1
Birch

V272-2
Ash

V273-2
Blackwood



Product Construction 产品结构:

Overall Thickness 成品全厚:

Size Available 成品规格:

Wear Layer Thickness/Type 耐磨层厚度 / 类型:

Anti-Slip Layer 防滑层:

Edge Design 边缘设计:

Water Resistance 防水性:

UV-Cured Polyurethane Coating UV 固化聚氨酯涂层:

Increased Dimensional Stability 尺寸稳定性:

Installation Method 铺装方式:

Recommended Adhesive 推荐的施工胶:

Solid PVC Luxury Vinyl Tile

5 mm

250 mm W x 1000 mm L

0.55 mm Solid PVC - Exceeds ASTM F 1700

Allows Installation Without Glue 可无胶安装 (Moderate Traffic)

Microbever

Waterproof 防水

X-SHIELD™ Polyurethane Coating

Fiberglass 玻璃纤维

Loose Lay/Perimeter Adhesion 区域粘胶

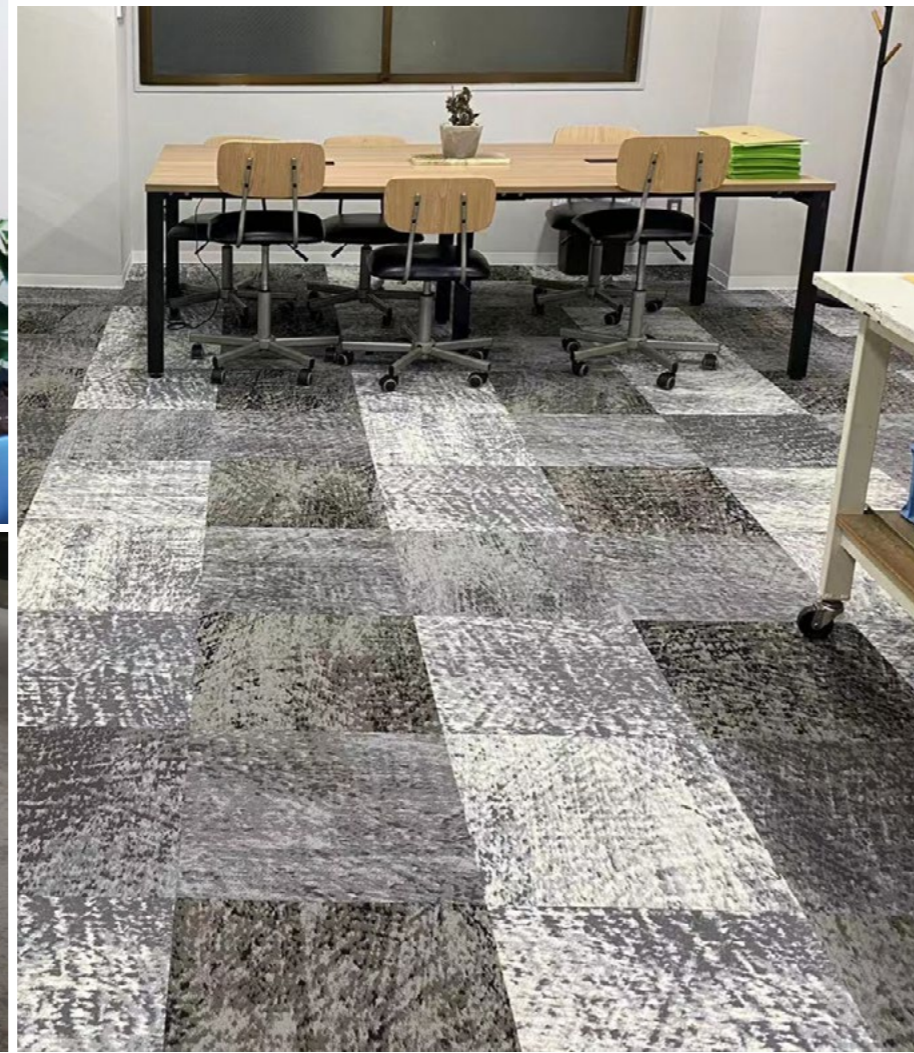
TX-500



V273-2 / T60102 Ashlar

SHOWCASES

案例展示



02

PREMIUM LINE

兼具创意、多元与格调，与现代空间相得益彰

Variety of innovative styles and combinations, the best response to contemporary space



Linen	T102	61	Boardwalk	T800	89
Milano	T103	63	Color Zip	T801	90
Pulse	T105	64	City Map	T803	91
Light Chaser	T106	65	Mist	T805	92
Street View	T107	66	Track 25	T806	93
ReGenerate	T108	67	Sunshower	T807	94
ReGenerate Plus	T108+	67	Tassels	T808	95
Circuit	T613	69	Color Stroke	T809	96
Criss-cross	T617	70	Abstract	T810	97
The Building Blocks	T625	71	Cube	T811	98
Spectrum	T629	72	Expression	T812	99
Sonic	T637	73	Nouvel	T813	100
Inherited	T656	74	Night Falls	T815	101
Pick Up Sticks	T657	75	Immerse	T816	102
Classic Track	T660	77	Paper Mache	T850	103
Track Line	T661	77	Tetrix	T851	104
Bayou	T662	79	Ripple	T852	105
Skate	T663	80	Reflection	T855	106
Granite	T665	81	Mosaic	T856	107
Montage	T667	82	Tree Walk	T857	108
Shadow	T670	83	Bumblebees	T861	109
In-motion	T671	84	Magnetite	T863	111
Banyan	T672	85	Ice Shards	T871	112
Time	T673	86	Tide	T873	113
Glacier	T675	87	Snowflakes	T896	114
Track Connection	T690	77			

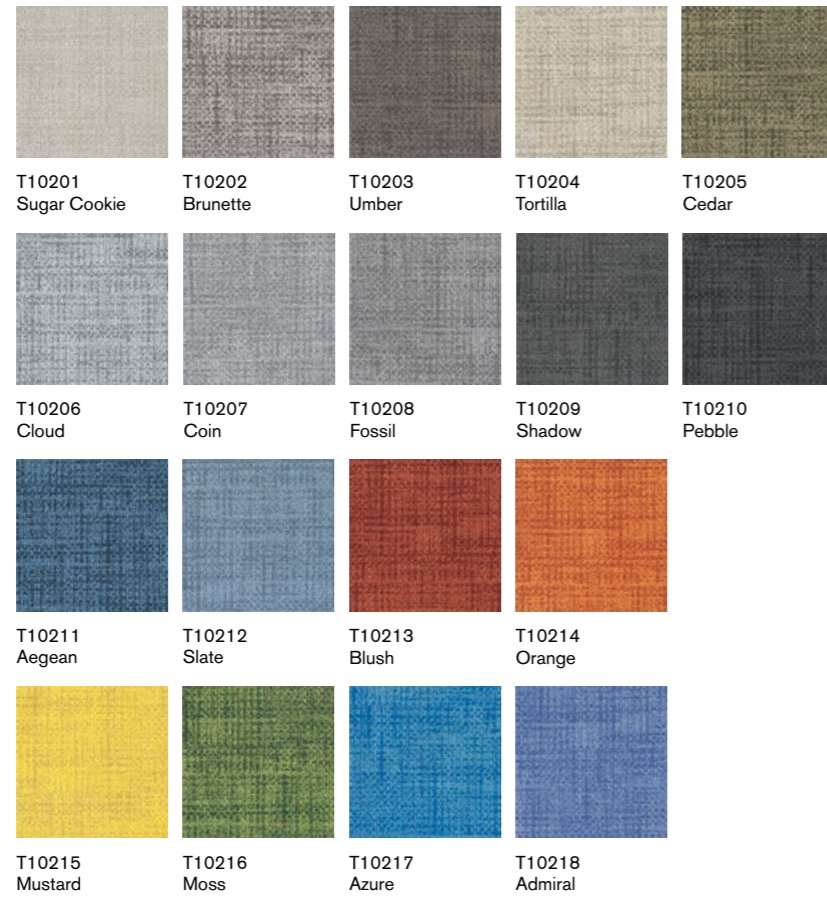
MODERN AND DIVERSE CHOICES FOR FLOORING DESIGNS

现代而创意多变的设计

优雅，简约与多元化，是东帝士对现代空间的理解。Tuntex Premium 集合了高格调、高品质与高质量的长条毯与方块毯产品，通过不同纹理、颜色与拼花的碰撞，打造兼具创意与格调的空间。

Grace, simplicity, and diversity are our comprehension of modern space. Tuntex Premium is a collection of high-taste and high-quality modular carpets and plank carpets. Mix of different textures, colors, and patterns creates a space with both creativity and style.

T102 LINEN



Face Yarn 纤维成分: nexlon™ Premium Solution Dyed Nylon featured with quartz
耐可隆原着染尼龙 含 quartz 石英纱

Construction 毯面结构: Hi / Mid / Lo Loop 高中低圈绒

Pile Height 织毯毛高: 5.5 / 4.5 / 3.0 mm

Tile Size 成品规格: 500 mm x 500 mm

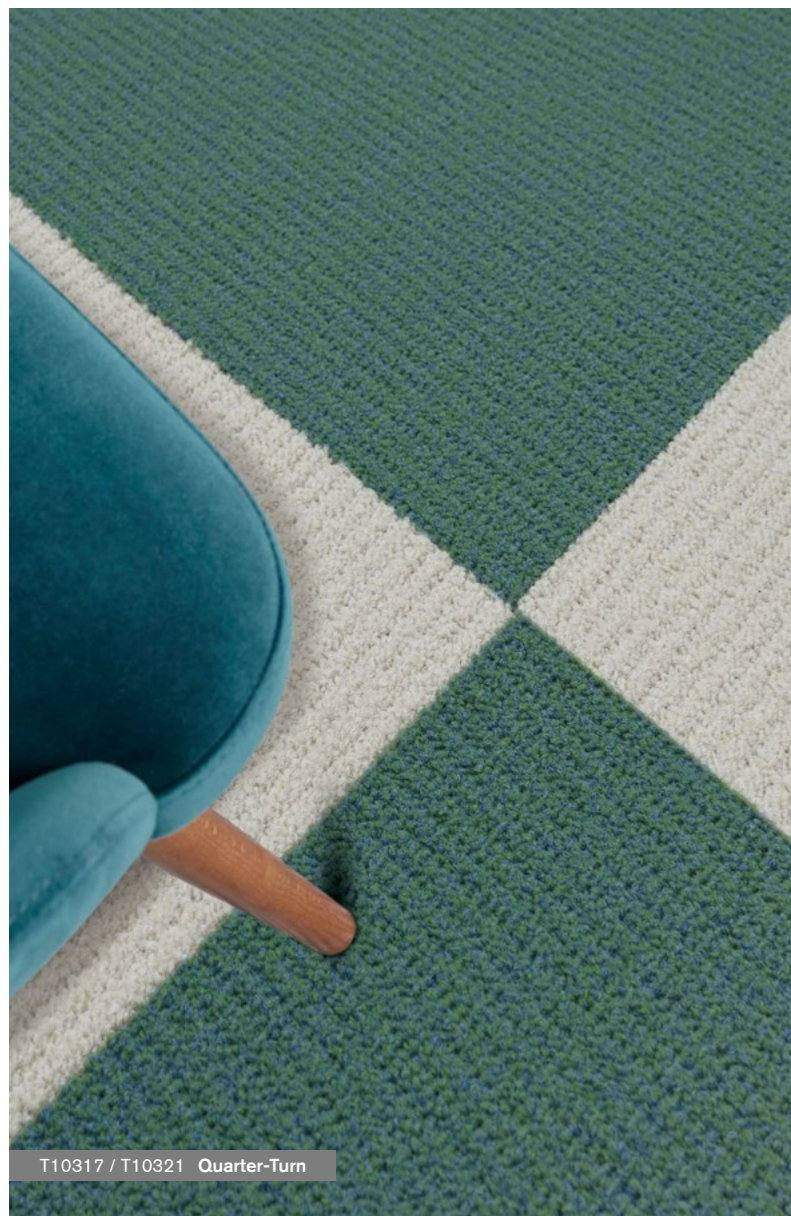
Standard Backing 标准化附底: TUNTEX Duraback

Foot Traffic 流量级别: Heavy

Treatment 附加工艺: STAINSHIELD™ 特殊防污处理 SOILGUARD™ 特殊防尘处理



T10201 / T10202 / T10203 / T10207 / T10208 Brick



T10317 / T10321 Quarter-Turn

T103 MILANO

Images below are enlarged and represent a section of a full tile only 以下地毯图像为放大显示图像



T10516 Quarter-Turn

T105 PULSE



Face Yarn 纤维成分: nexlon™ Premium Solution Dyed Nylon featured with aircell
耐可隆原着染尼龙 含 aircell 空灵纱

Construction 毯面结构: Multi Hi / Lo Loop 高低渐变圈绒

Pile Height 织毯毛高: 6.0 - 3.5 mm

Tile Size 成品规格: 500 mm x 500 mm

Standard Backing 标准化附底: TUNTEX Duraback

Foot Traffic 流量级别: Heavy

Treatment 附加工艺: **STAIN SHIELD™** 特殊防污处理 **SOIL GUARD™** 特殊防尘处理

Face Yarn 纤维成分: nexlon™ Premium Solution Dyed Nylon
耐可隆原着染尼龙

Construction 毯面结构: Multi Hi / Lo Loop 高低渐变圈绒

Pile Height 织毯毛高: 4.5 - 3.5 mm

Tile Size 成品规格: 500 mm x 500 mm

Standard Backing 标准化附底: TUNTEX Duraback

Foot Traffic 流量级别: Heavy

Treatment 附加工艺: **STAIN SHIELD™** 特殊防污处理 **SOIL GUARD™** 特殊防尘处理

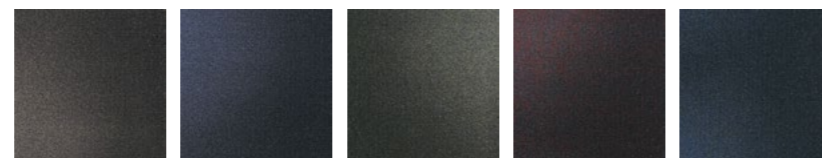


T10602 / T10604 Ashlar

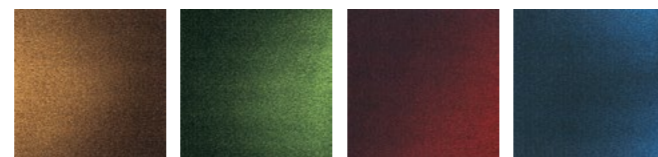
T106 LIGHT CHASER



T10601 Coin T10602 Fossil T10603 Magnet T10604 Shadow T10605 Charcoal



T10606 Gold Black T10607 Baby Blue T10608 Lime T10609 Garnet T10610 Navy

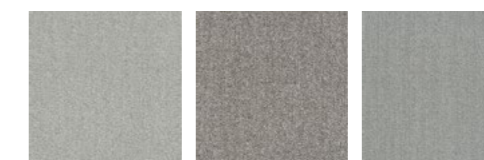


T10611 Sunset T10612 Emerald T10613 Ruby T10614 Aegean



T10703 / T10705 Ashlar

T107 STREET VIEW



T10701 Cloud T10702 Fog T10703 Grey



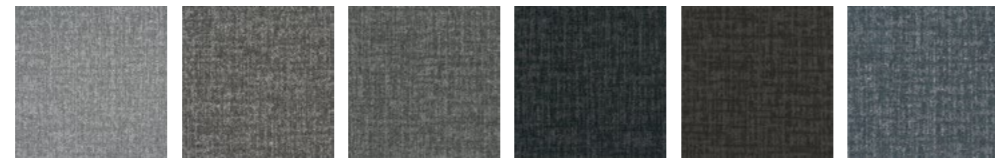
T10704 Fossil T10705 Ash T10706 Iron

Face Yarn 纤维成分:	nexlon™ Premium Solution Dyed Nylon featured with quartz 耐可隆原着染尼龙 含 quartz 石英纱
Construction 毯面结构:	Multi Hi / Lo Loop 高低渐变圈绒
Pile Height 织毯毛高:	5.5 - 3.0 mm
Tile Size 成品规格:	500 mm x 500 mm
Standard Backing 标准化附底:	TUNTEX Duraback
Foot Traffic 流量级别:	Heavy
Treatment 附加工艺:	STAIN SHIELD™ 特殊防污处理 SOIL GUARD™ 特殊防尘处理

aircell™

Face Yarn 纤维成分:	nexlon™ Premium Solution Dyed Nylon featured with aircell 耐可隆原着染尼龙 含 aircell 空灵纱
Construction 毯面结构:	Hi / Mid / Lo Loop 高中低圈绒
Pile Height 织毯毛高:	4.0 / 3.8 / 3.0 mm
Tile Size 成品规格:	500 mm x 500 mm
Standard Backing 标准化附底:	TUNTEX Duraback
Foot Traffic 流量级别:	Heavy
Treatment 附加工艺:	STAIN SHIELD™ 特殊防污处理 SOIL GUARD™ 特殊防尘处理

T108 REGENERATE



T10825
Silver

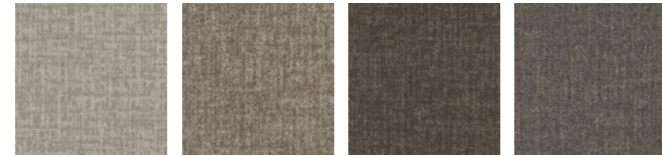
T10803
Ash

T10805
Smokey

T10830
Porpoise

T10806
Charcoal

T10807
Lead

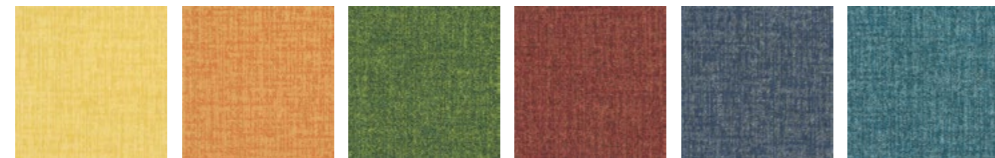


T10826
Cloud

T10834
Hazel Wood

T10835
Iron

T10817
Tawny



T10838
Yellow

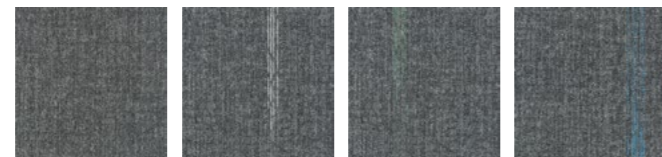
T10829
Orange

T10821
Emerald

T10822
Ruby

T10823
Denim

T10837
Aegean

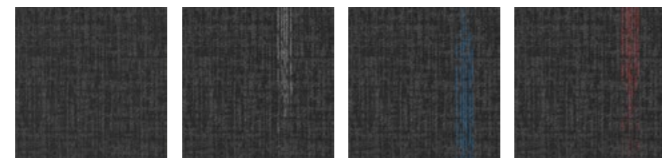


T10805
Smokey

T10851
Coin

T10853
Emerald

T10854
Cerulean



T10806
Charcoal

T10861
Silver

T10863
Aegean

T10864
Ruby

T108+ REGENERATE PLUS

Face Yarn 纤维成分:

T108

nexlon™ Premium Solution Dyed Nylon
耐可隆原着染尼龙

T108+

nexlon™ Premium Solution Dyed Nylon featured with quartz
耐可隆原着染尼龙 含 quartz 石英纱

Construction 毯面结构:

Hi / Mid / Lo Loop 高中低圈绒

Pile Height 织毯毛高:

5.0 / 4.5 / 3.0 mm

Tile Size 成品规格:

500 mm x 500 mm

Standard Backing 标准化附底:

TUNTEX Duraback

Foot Traffic 流量级别:

Heavy

Treatment 附加工艺:

STAINSHIELD™ 特殊防污处理 **SOILGUARD™** 特殊防尘处理

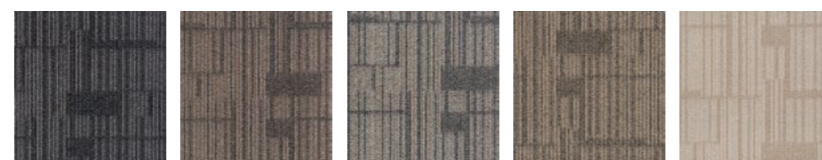


T10807 / T10823 / T10825 / T10837 Brick

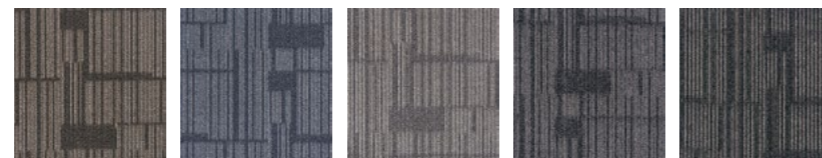


T61303 Brick

T613 CIRCUIT



T61301 Charcoal T61302 Taupe T61303 Ash T61304 Cedar T61305 Peanut

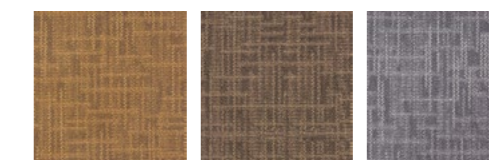


T61306 Hazel T61307 Slate T61308 Pewter T61309 Anchor T61310 Shadow

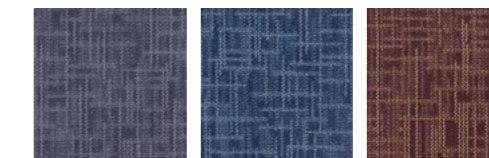


T6173 Ashlar

T617 CRISS-CROSS



T6171 Peanut T6172 Cedar T6173 Fossil



T6174 Anchor T6175 Spruce T6176 Syrup

Face Yarn 纤维成分: nexlon™ Premium Solution Dyed Nylon
耐可隆原着染尼龙

Construction 毯面结构: Hi / Mid / Lo Loop 高中低圈绒

Pile Height 织毯毛高: 5.0 / 4.5 / 3.5 mm

Tile Size 成品规格: 500 mm x 500 mm

Standard Backing 标准化附底: TUNTEX Duraback

Foot Traffic 流量级别: Heavy

Treatment 附加工艺: **STAIN SHIELD™** 特殊防污处理 **SOIL GUARD™** 特殊防尘处理

Face Yarn 纤维成分: nexlon™ Premium Solution Dyed Nylon
耐可隆原着染尼龙

Construction 毯面结构: Hi / Mid / Lo Loop 高中低圈绒

Pile Height 织毯毛高: 6.0 / 4.5 / 3.0 mm

Tile Size 成品规格: 500 mm x 500 mm

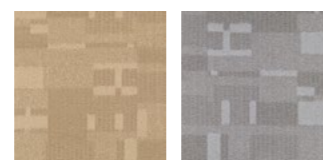
Standard Backing 标准化附底: TUNTEX Duraback

Foot Traffic 流量级别: Heavy

Treatment 附加工艺: **STAIN SHIELD™** 特殊防污处理 **SOIL GUARD™** 特殊防尘处理



T625 THE BUILDING BLOCKS



T6251
Flaxen

T6253
Coin



T6255
Denim

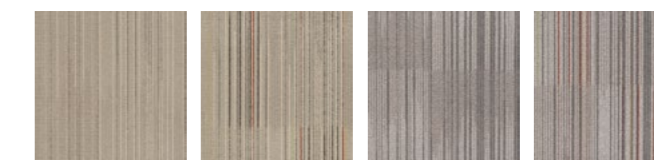
T6256
Smoke

T6251 / T6253 / T6256 Quarter-Turn

Face Yarn 纤维成分:	nexlon™ Premium Solution Dyed Nylon 耐可隆原着染尼龙
Construction 毯面结构:	Hi / Mid / Lo Loop with Tip-shear Finish 高中低圈绒 - 高圈剪毛
Pile Height 织毯毛高:	6.5 / 4.5 / 3.5 mm
Tile Size 成品规格:	500 mm x 500 mm
Standard Backing 标准化附底:	TUNTEX Duraback
Foot Traffic 流量级别:	Moderate
Treatment 附加工艺:	STAINSHIELD™ 特殊防污处理 SOILGUARD™ 特殊防尘处理



T629 SPECTRUM

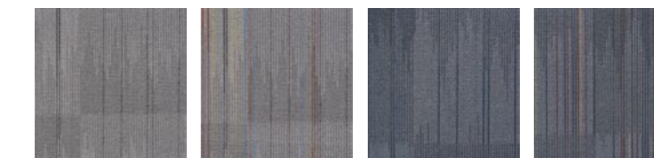


T62901
Beige

T62902
Beige Colored

T62903
Latte

T62904
Latte Colored



T62905
Pewter

T62906
Pewter Colored

T62907
Slate

T62908
Slate Colored



T62909
Charcoal

T62910
Charcoal Colored

T62905 / T62906 Brick

Face Yarn 纤维成分:	nexlon™ Premium Solution Dyed Nylon 耐可隆原着染尼龙
Construction 毯面结构:	Hi / Mid / Lo Loop 高中低圈绒
Pile Height 织毯毛高:	5.0 / 4.0 / 3.0 mm
Tile Size 成品规格:	500 mm x 500 mm
Standard Backing 标准化附底:	TUNTEX Duraback
Foot Traffic 流量级别:	Heavy
Treatment 附加工艺:	STAINSHIELD™ 特殊防污处理 SOILGUARD™ 特殊防尘处理



T63704 / T63714 Ashlar

T637 SONIC

T63701 Thunderclap	T63711 Super Sonic	T63702 Starfighter	T63712 Concorde
T63703 Shockwave	T63713 Tupolev	T63704 Boom	T63714 Gulfstream
T63705 Aviator	T63715 Barrier	T63706 Blackbird	T63716 Boeing
T63707 Vapour	T63717 Mach	T63708 McDonnell	T63718 Dreamliner



T65621 Ashlar

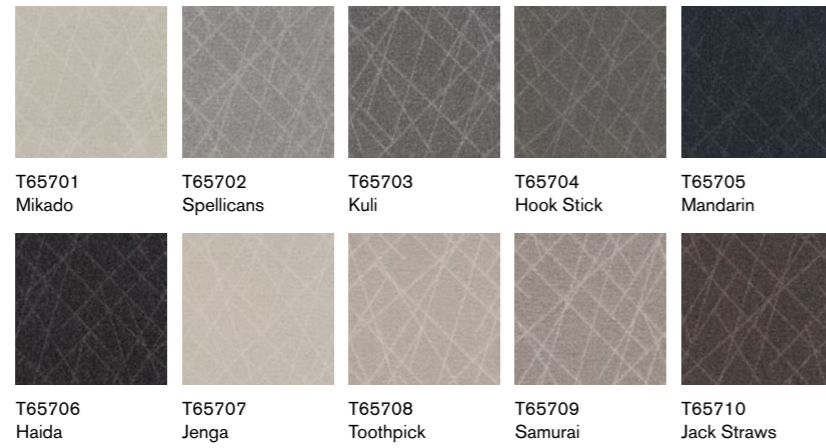
T656 INHERITED

T65601 Peanut	T65602 Latte	T65603 Rock	T65605 Slate
T65604 Sunset	T65606 Aegean		
T65621 Fossil	T65622 Taupe	T65623 Ash	

Face Yarn 纤维成分:	nexlon™ Premium Solution Dyed Nylon 耐可隆原着染尼龙
Construction 毯面结构:	Multi Hi / Lo Loop 高低渐变圈绒
Pile Height 织毯毛高:	4.5 - 3.0 mm
Tile Size 成品规格:	500 mm x 500 mm
Standard Backing 标准化附底:	TUNTEX Duraback
Foot Traffic 流量级别:	Heavy
Treatment 附加工艺:	STAIN SHIELD™ 特殊防污处理 SOIL GUARD™ 特殊防尘处理

Face Yarn 纤维成分:	nexlon™ Premium Solution Dyed Nylon 耐可隆原着染尼龙
Construction 毯面结构:	Hi / Mid / Lo Loop 高中低圈绒
Pile Height 织毯毛高:	6.5 / 5.0 / 3.0 mm
Tile Size 成品规格:	500 mm x 500 mm
Standard Backing 标准化附底:	TUNTEX Duraback
Foot Traffic 流量级别:	Heavy
Treatment 附加工艺:	STAIN SHIELD™ 特殊防污处理 SOIL GUARD™ 特殊防尘处理

T657 PICK UP STICKS

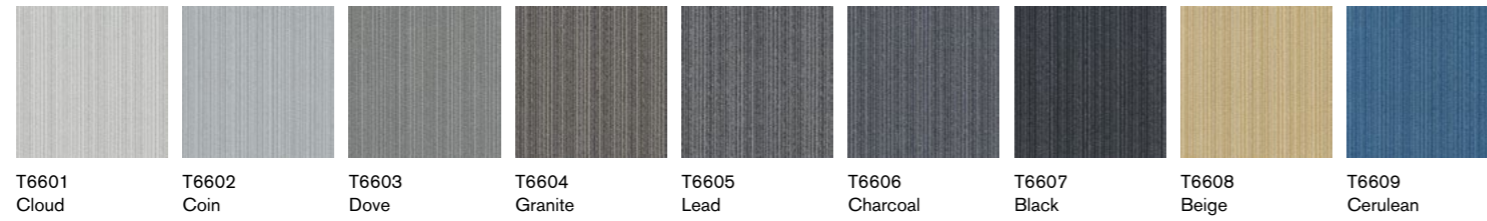


Face Yarn 纤维成分:	nexlon™ Premium Solution Dyed Nylon featured with quartz 耐可隆原着染尼龙 含 quartz 石英纱
Construction 毯面结构:	Hi / Mid / Lo Loop 高中低圈绒
Pile Height 织毯毛高:	5.0 / 4.5 / 3.0 mm
Tile Size 成品规格:	500 mm x 500 mm
Standard Backing 标准化附底:	TUNTEX Duraback
Foot Traffic 流量级别:	Heavy
Treatment 附加工艺:	STAINSHIELD™ 特殊防污处理 SOILGUARD™ 特殊防尘处理

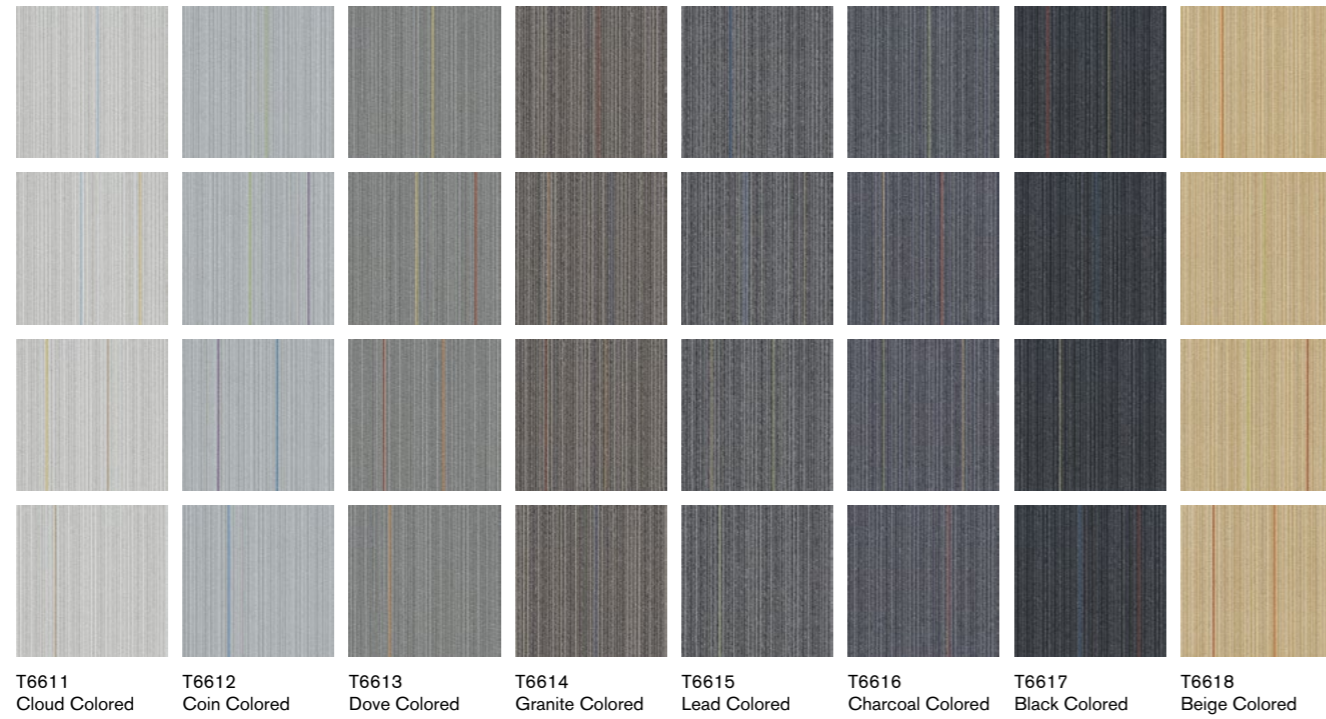


T65702 / T65706 Quarter-Turn

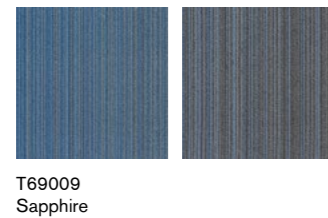
T660 CLASSIC TRACK



T661 TRACK LINE



T690 TRACK CONNE- CTION



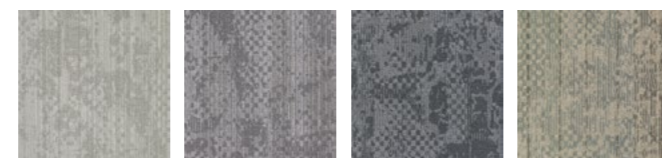
Face Yarn 纤维成分:	nexlon™ Premium Solution Dyed Nylon 耐可隆原着染尼龙
Construction 毯面结构:	Hi / Lo Loop 高低圈绒
Pile Height 织毯毛高:	4.0 / 3.5 mm
Tile Size 成品规格:	500 mm x 500 mm
Standard Backing 标准化附底:	TUNTEX Duraback 东帝士底背
Foot Traffic 流量级别:	Heavy
Treatment 附加工艺:	STAINSHIELD™ 特殊防污处理 SOILGUARD™ 特殊防尘处理



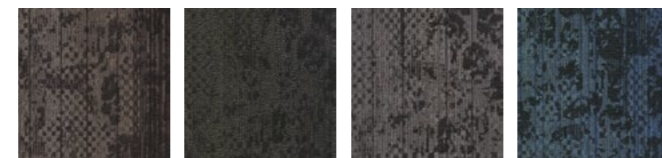
T6607 / T6617 Brick



T662 BAYOU



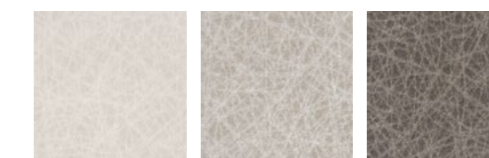
T66201 Louisiana
T66202 Mississippi
T66203 Texas
T66204 Cajun



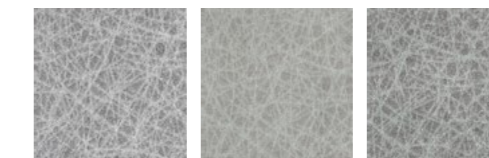
T66205 Creole
T66206 Everglade
T66207 Wetlands
T66208 Crawfish



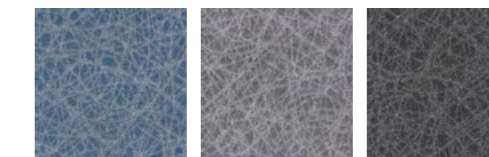
T663 SKATE



T66301 Sand Dollar
T66302 Tan
T66303 Coffee



T66304 Cloud
T66305 Beige
T66306 Oat



T66307 Aegean
T66308 Grey
T66309 Pebble

Face Yarn 纤维成分: nexlon™ Premium Solution Dyed Nylon featured with quartz
耐可隆原着染尼龙 含 quartz 石英纱

Construction 毯面结构: Hi / Mid / Lo Loop 高中低圈绒

Pile Height 织毯毛高: 5.5 / 4.5 / 3.0 mm

Tile Size 成品规格: 500 mm x 500 mm

Standard Backing 标准化附底: TUNTEX Duraback

Foot Traffic 流量级别: Heavy

Treatment 附加工艺: **STAIN SHIELD™** 特殊防污处理 **SOIL GUARD™** 特殊防尘处理

Face Yarn 纤维成分: nexlon™ Premium Solution Dyed Nylon
耐可隆原着染尼龙

Construction 毯面结构: Hi / Mid / Lo Loop 高中低圈绒

Pile Height 织毯毛高: 4.5 / 4.0 / 3.0 mm

Tile Size 成品规格: 500 mm x 500 mm

Standard Backing 标准化附底: TUNTEX Duraback

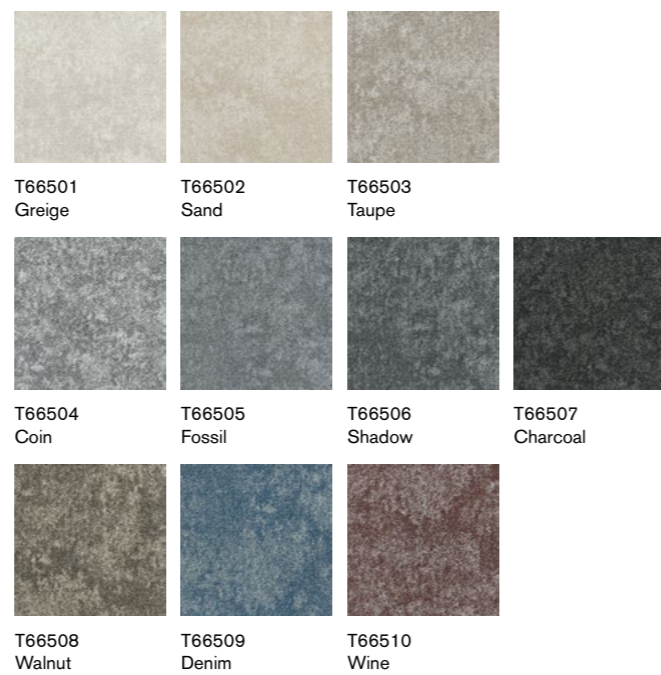
Foot Traffic 流量级别: Heavy

Treatment 附加工艺: **STAIN SHIELD™** 特殊防污处理 **SOIL GUARD™** 特殊防尘处理



T66502 / T66503 Brick

T665 GRANITE



T66701 / T66709 / T66710 Quarter-Turn

T667 MONTAGE



Face Yarn 纤维成分: nexlon™ Premium Solution Dyed Nylon
耐可隆原着染尼龙

Construction 毯面结构: Multi Hi / Lo Loop 高低渐变圈绒

Pile Height 织毯毛高: 5.5 - 3.0 mm

Tile Size 成品规格: 500 mm x 500 mm

Standard Backing 标准化附底: TUNTEX Duraback

Foot Traffic 流量级别: Heavy

Treatment 附加工艺: STAINSHIELD™ 特殊防污处理 SOILGUARD™ 特殊防尘处理

Face Yarn 纤维成分: nexlon™ Premium Solution Dyed Nylon
耐可隆原着染尼龙

Construction 毯面结构: Hi / Mid / Lo Loop 高中低圈绒

Pile Height 织毯毛高: 5.0 / 4.5 / 3.0 mm

Tile Size 成品规格: 500 mm x 500 mm

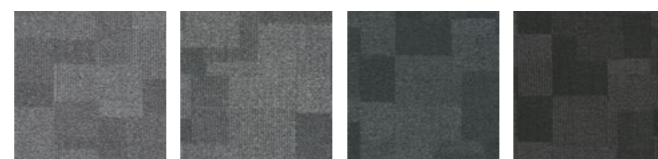
Standard Backing 标准化附底: TUNTEX Duraback

Foot Traffic 流量级别: Heavy

Treatment 附加工艺: STAINSHIELD™ 特殊防污处理 SOILGUARD™ 特殊防尘处理



T670 SHADOW



T67001 Cloud T67002 Coin T67003 Fossil T67004 Charcoal



T67005 Oyster T67006 Oat T67007 Hazel Wood



T67008 Fire T67009 Shamrock T67010 Sapphire

T67005 Quarter-Turn

Face Yarn 纤维成分: nexlon™ Premium Solution Dyed Nylon
 耐可隆原着染尼龙

Construction 毯面结构: Hi / Mid / Lo Loop 高中低圈绒

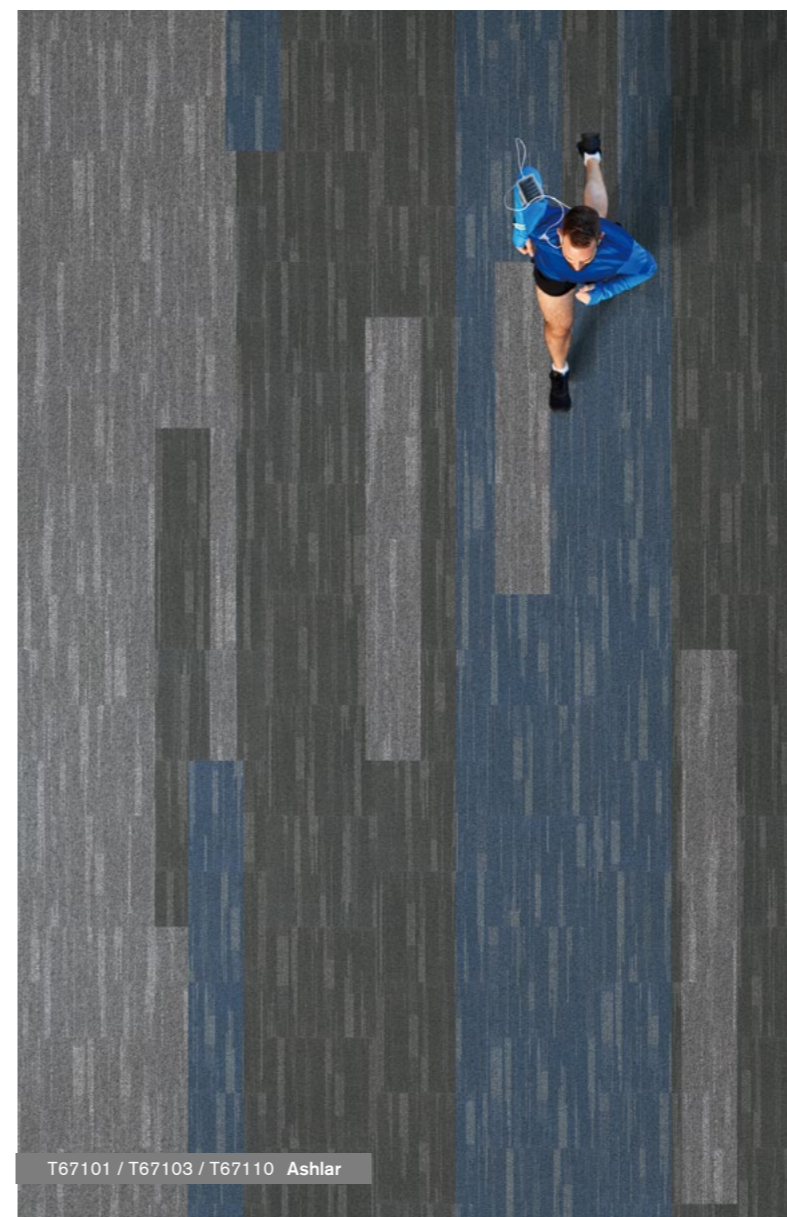
Pile Height 织毯毛高: 5.5 / 4.5 / 3.5 mm

Tile Size 成品规格: 500 mm x 500 mm

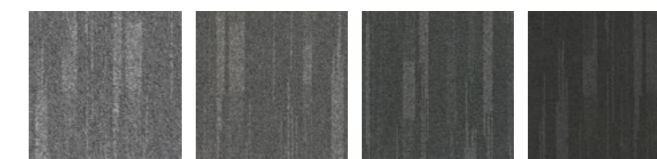
Standard Backing 标准化附底: TUNTEX Duraback

Foot Traffic 流量级别: Heavy

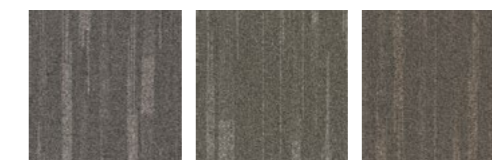
Treatment 附加工艺: **STAIN SHIELD™** 特殊防污处理 **SOIL GUARD™** 特殊防尘处理



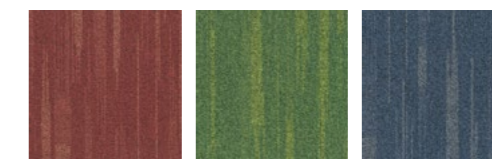
T671 IN-MOTION



T67101 Cloud T67102 Coin T67103 Fossil T67104 Charcoal



T67105 Oyster T67106 Oat T67107 Hazel Wood



T67108 Fire T67109 Shamrock T67110 Sapphire

T67101 / T67103 / T67110 Ashlar

Face Yarn 纤维成分: nexlon™ Premium Solution Dyed Nylon
 耐可隆原着染尼龙

Construction 毯面结构: Hi / Mid / Lo Loop 高中低圈绒

Pile Height 织毯毛高: 5.5 / 4.5 / 3.5 mm

Tile Size 成品规格: 500 mm x 500 mm

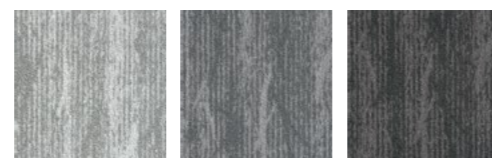
Standard Backing 标准化附底: TUNTEX Duraback

Foot Traffic 流量级别: Heavy

Treatment 附加工艺: **STAIN SHIELD™** 特殊防污处理 **SOIL GUARD™** 特殊防尘处理



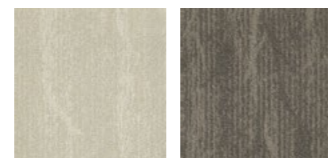
T672 BANYAN



T67201
Cloud

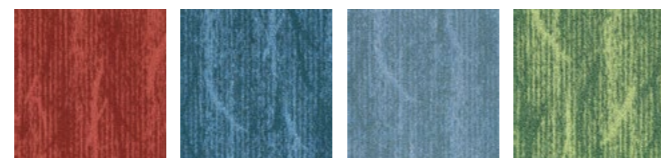
T67202
Fossil

T67203
Pebble



T67204
Beige

T67205
Carob



T67206
Rose

T67207
Aegean

T67208
Stone

T67209
Olive

T67201 / T67209 Ashlar



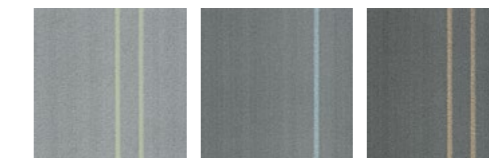
T673 TIME



T67310
Cloud

T67320
Fossil

T67330
Iron



T67311
Cloud Green

T67321
Fossil Blue

T67331
Iron Yellow

T67311 / T67320 Quarter-Turn

Face Yarn 纤维成分: nexlon™ Premium Solution Dyed Nylon featured with quartz 耐可隆原着染尼龙 含 quartz 石英纱

Construction 毯面结构: Hi / Mid / Lo Loop 高中低圈绒

Pile Height 织毯毛高: 5.0 / 4.0 / 3.0 mm

Tile Size 成品规格: 500 mm x 500 mm

Standard Backing 标准化附底: TUNTEX Duraback

Foot Traffic 流量级别: Heavy

Treatment 附加工艺: **STAIN SHIELD™** 特殊防污处理 **SOIL GUARD™** 特殊防尘处理

aircell™

Face Yarn 纤维成分: nexlon™ Premium Solution Dyed Nylon featured with aircell 耐可隆原着染尼龙 含 aircell 空灵纱

Construction 毯面结构: Multi Hi / Lo Loop 高低渐变圈绒

Pile Height 织毯毛高: 6.0 - 4.0 mm

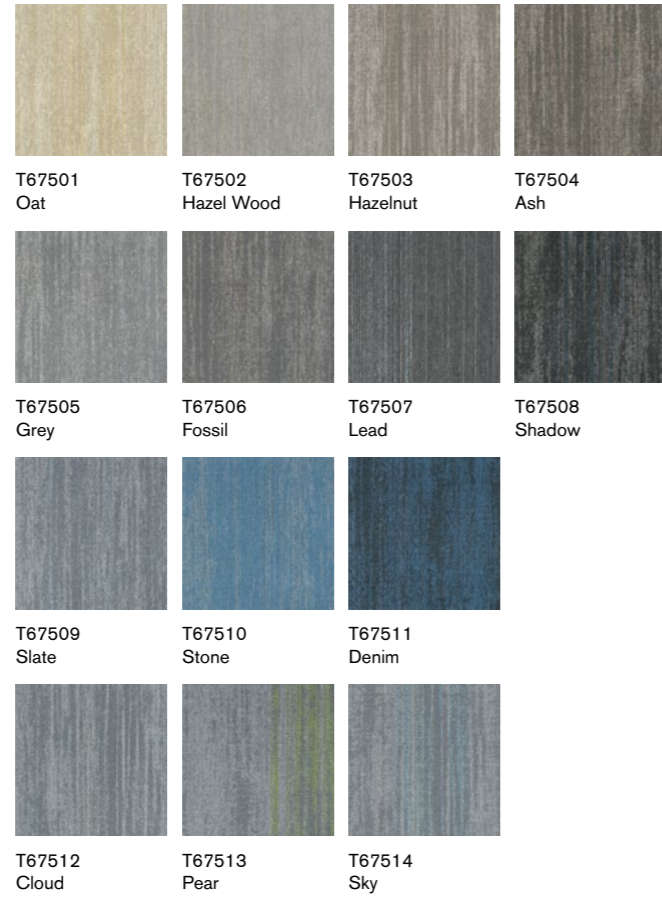
Tile Size 成品规格: 500 mm x 500 mm

Standard Backing 标准化附底: TUNTEX Duraback

Foot Traffic 流量级别: Heavy

Treatment 附加工艺: **STAIN SHIELD™** 特殊防污处理 **SOIL GUARD™** 特殊防尘处理

T675 GLACIER



aircell™

Face Yarn 纤维成分:	nexlon™ Premium Solution Dyed Nylon featured with aircell and quartz 耐可隆原着染尼龙 含 aircell 空灵纱和 quartz 石英纱
Construction 毯面结构:	Hi / Mid / Lo Loop 高中低圈绒
Pile Height 织毯毛高:	6.0 / 5.0 / 3.5 mm
Tile Size 成品规格:	500 mm x 500 mm
Standard Backing 标准化附底:	TUNTEX Duraback
Foot Traffic 流量级别:	Heavy
Treatment 附加工艺:	STAINSHIELD™ 特殊防污处理 SOILGUARD™ 特殊防尘处理



T67513 / T67514 Brick



T8008 Ashlar

T800 BOARDWALK



T80107 Herringbone

T801 COLOR ZIP

Images below are enlarged and represent a section of a full tile only 以下地毯图像为放大显示图像



Face Yarn 纤维成分: nexlon™ Premium Solution Dyed Nylon
耐可隆原着染尼龙

Construction 毯面结构: Hi / Mid / Lo Loop 高中低圈绒

Pile Height 织毯毛高: 6.0 / 4.0 / 3.0 mm

Tile Size 成品规格: 250 mm x 1000 mm

Standard Backing 标准化附底: TUNTEX Duraback

Foot Traffic 流量级别: Heavy

Treatment 附加工艺: **STAIN SHIELD™** 特殊防污处理 **SOIL GUARD™** 特殊防尘处理

Face Yarn 纤维成分: nexlon™ Premium Solution Dyed Nylon
耐可隆原着染尼龙

Construction 毯面结构: Multi Hi / Lo Loop 高低渐变圈绒

Pile Height 织毯毛高: 6.0 - 3.0 mm

Tile Size 成品规格: 250 mm x 1000 mm

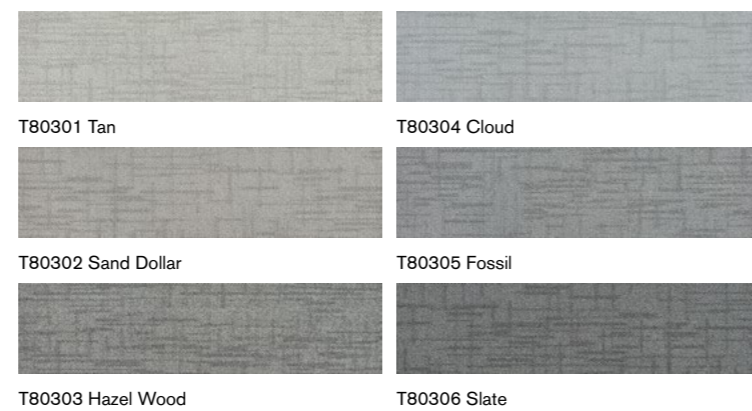
Standard Backing 标准化附底: TUNTEX Duraback

Foot Traffic 流量级别: Heavy

Treatment 附加工艺: **STAIN SHIELD™** 特殊防污处理 **SOIL GUARD™** 特殊防尘处理



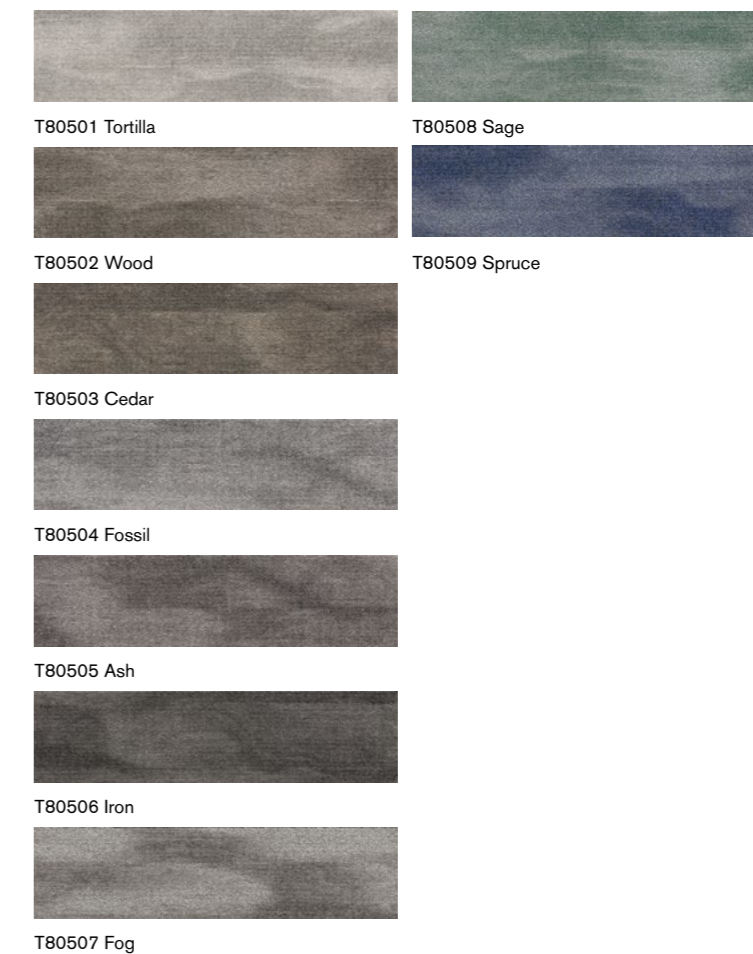
T803 CITY MAP



T80302 / T80303 Ashlar



T805 MIST



T80504 / T80508 Ashlar



Face Yarn 纤维成分: nexlon™ Premium Solution Dyed Nylon featured with aircell
 耐可隆原着染尼龙 含 aircell 空灵纱

Construction 毯面结构: Hi / Lo Loop 高低圈绒

Pile Height 织毯毛高: 5.5 / 3.0 mm

Tile Size 成品规格: 250 mm x 1000 mm

Standard Backing 标准化附底: TUNTEX Duraback

Foot Traffic 流量级别: Heavy

Treatment 附加工艺: **STAIN SHIELD™** 特殊防污处理 **SOIL GUARD™** 特殊防尘处理

Face Yarn 纤维成分: nexlon™ Premium Solution Dyed Nylon
 耐可隆原着染尼龙

Construction 毯面结构: Multi Hi / Lo Loop 高低渐变圈绒

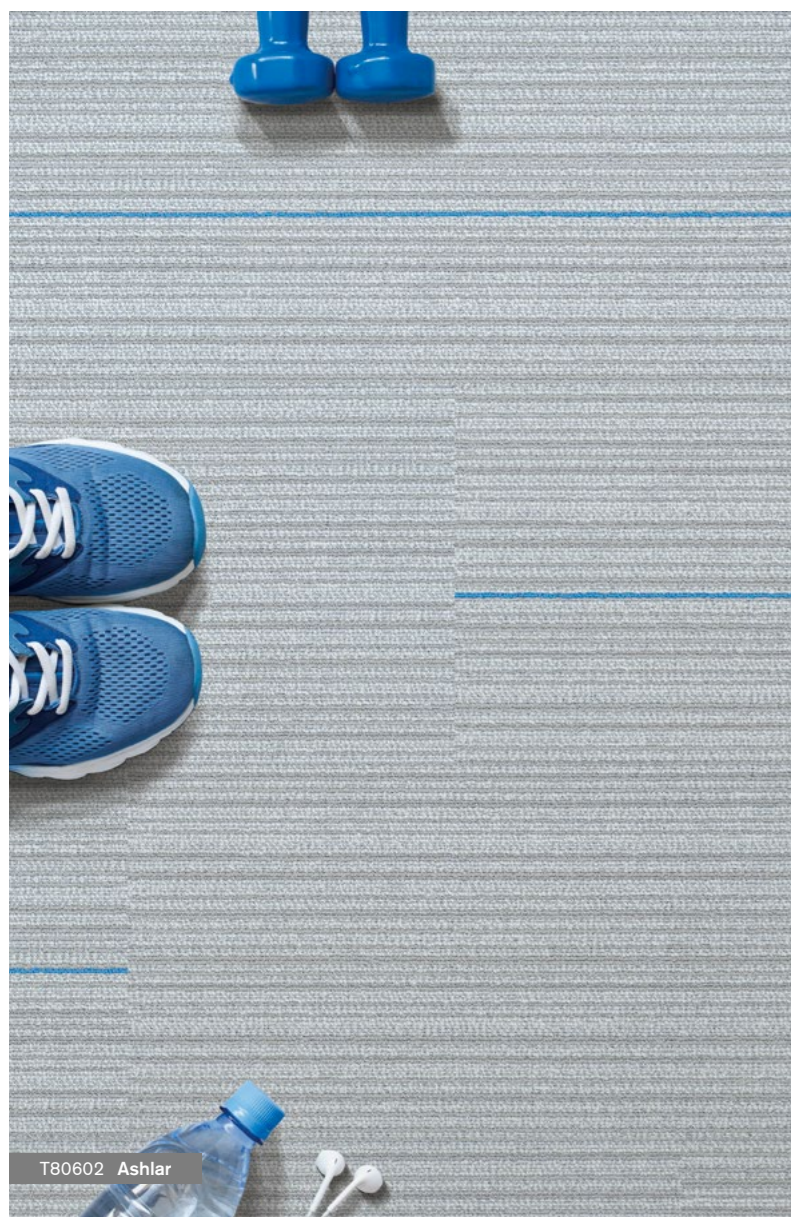
Pile Height 织毯毛高: 5.0 - 3.0 mm

Tile Size 成品规格: 250 mm x 1000 mm

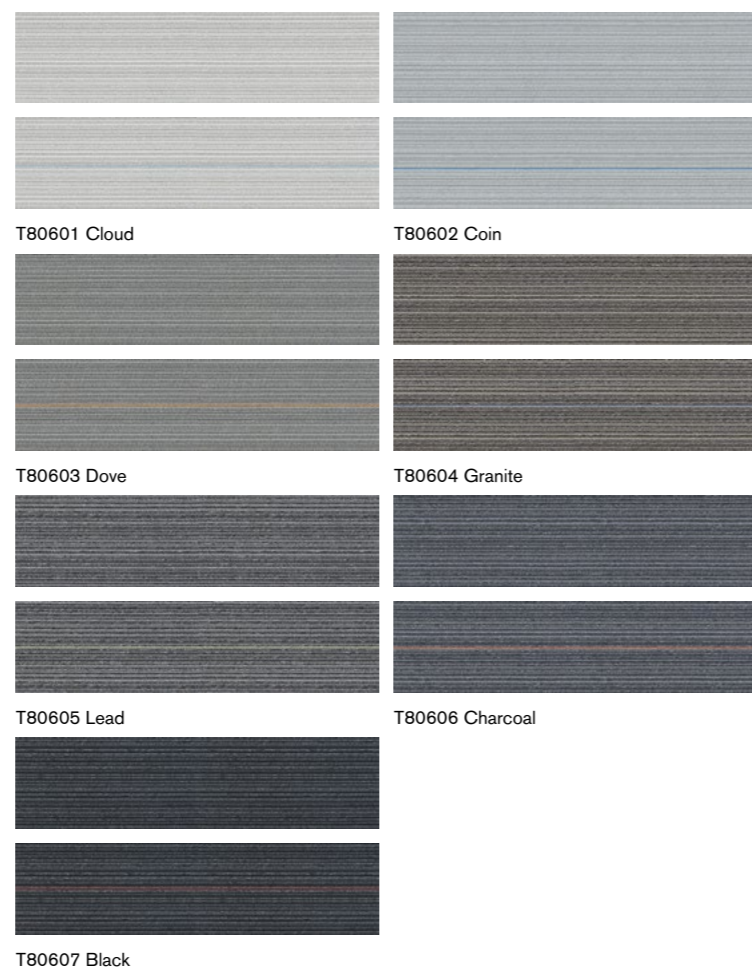
Standard Backing 标准化附底: TUNTEX Duraback

Foot Traffic 流量级别: Heavy

Treatment 附加工艺: **STAIN SHIELD™** 特殊防污处理 **SOIL GUARD™** 特殊防尘处理



T806 TRACK 25



T806 系列长条形地毯包含数量随机的带彩条及不带彩条两个版本的地毯。
Tuntex T806 "Track 25" contains a random mixture of base color tiles and tiles with accent colors.

Face Yarn 纤维成分:	nexlon™ Premium Solution Dyed Nylon 耐可隆原着染尼龙
Construction 毯面结构:	Hi / Lo Loop 高低圈绒
Pile Height 织毯毛高:	4.0 / 3.5 mm
Tile Size 成品规格:	250 mm x 1000 mm
Standard Backing 标准化附底:	TUNTEX Duraback
Foot Traffic 流量级别:	Heavy
Treatment 附加工艺:	STAIN SHIELD™ 特殊防污处理 SOIL GUARD™ 特殊防尘处理



T807 SUNSHOWER

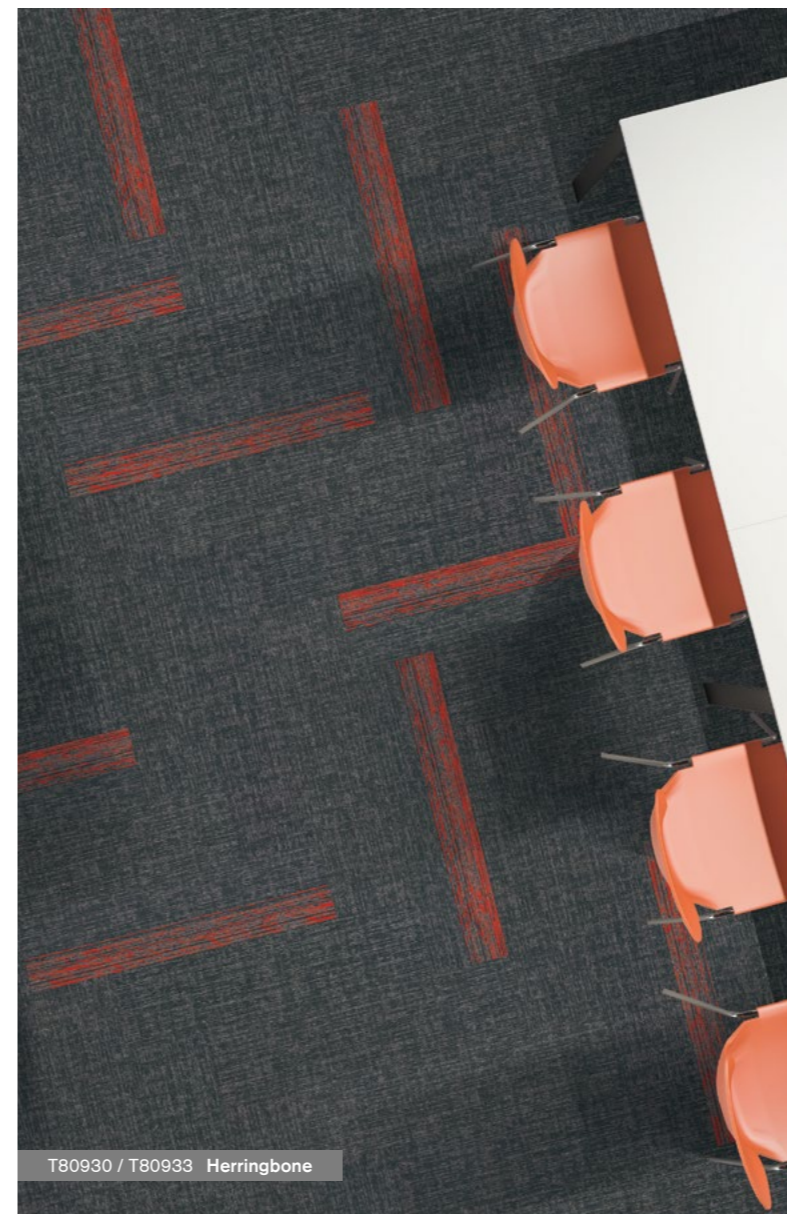
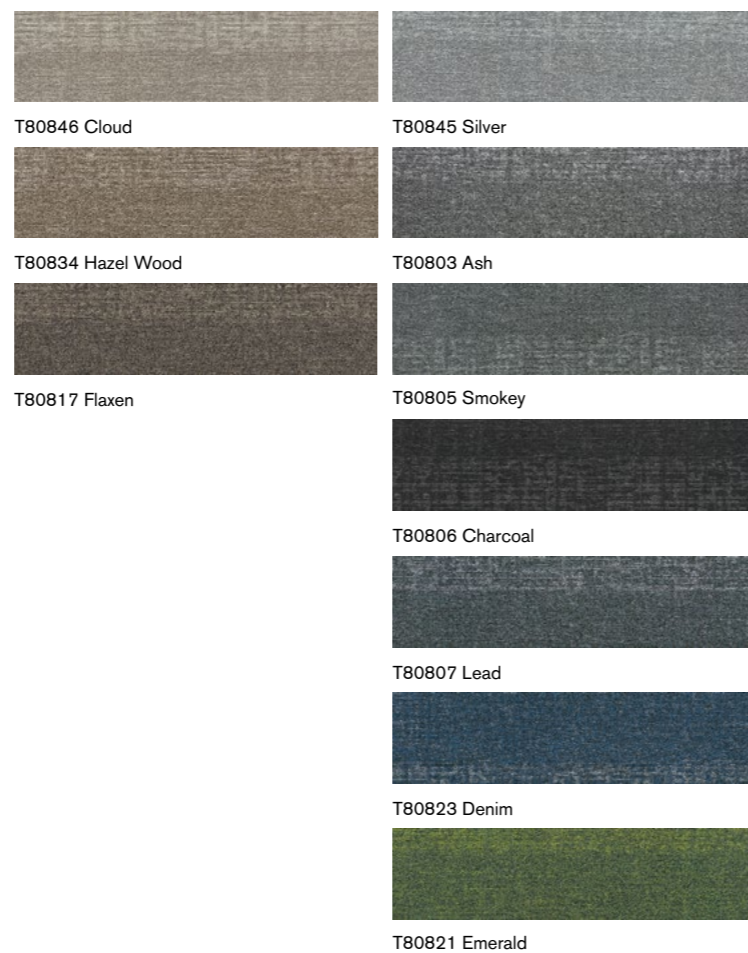


aircell™

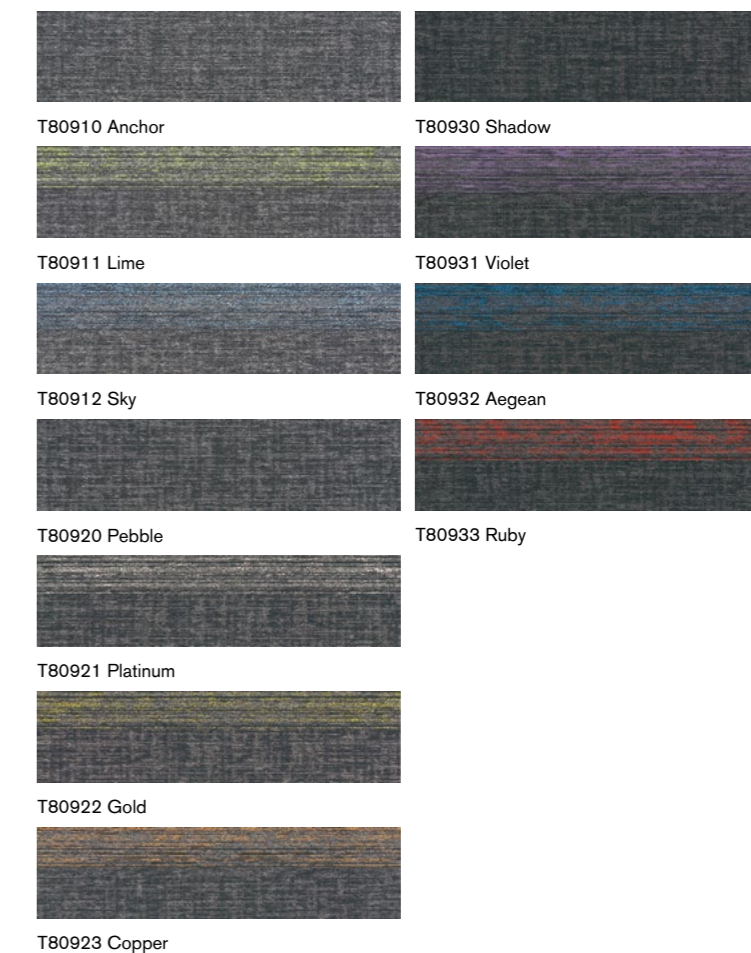
Face Yarn 纤维成分:	nexlon™ Premium Solution Dyed Nylon featured with aircell™ 耐可隆原着染尼龙 含 aircell 空灵纱
Construction 毯面结构:	Hi / Mid / Lo Loop 高中低圈绒
Pile Height 织毯毛高:	5.5 / 4.5 / 3.0 mm
Tile Size 成品规格:	250 mm x 1000 mm
Standard Backing 标准化附底:	TUNTEX Duraback
Foot Traffic 流量级别:	Heavy
Treatment 附加工艺:	STAIN SHIELD™ 特殊防污处理 SOIL GUARD™ 特殊防尘处理



T808 TASSELS



T809 COLOR STROKE



Face Yarn 纤维成分: nexlon™ Premium Solution Dyed Nylon
耐可隆原着染尼龙

Construction 毯面结构: Hi / Mid / Lo Loop 高中低圈绒

Pile Height 织毯毛高: 5.0 / 4.5 / 3.0 mm

Tile Size 成品规格: 250 mm x 1000 mm

Standard Backing 标准化附底: TUNTEX Duraback

Foot Traffic 流量级别: Heavy

Treatment 附加工艺: STAINSHIELD™ 特殊防污处理 SOILGUARD™ 特殊防尘处理

Face Yarn 纤维成分: nexlon™ Premium Solution Dyed Nylon
耐可隆原着染尼龙

Construction 毯面结构: Hi / Mid / Lo Loop 高中低圈绒

Pile Height 织毯毛高: 5.0 / 4.5 / 3.0 mm

Tile Size 成品规格: 250 mm x 1000 mm

Standard Backing 标准化附底: TUNTEX Duraback

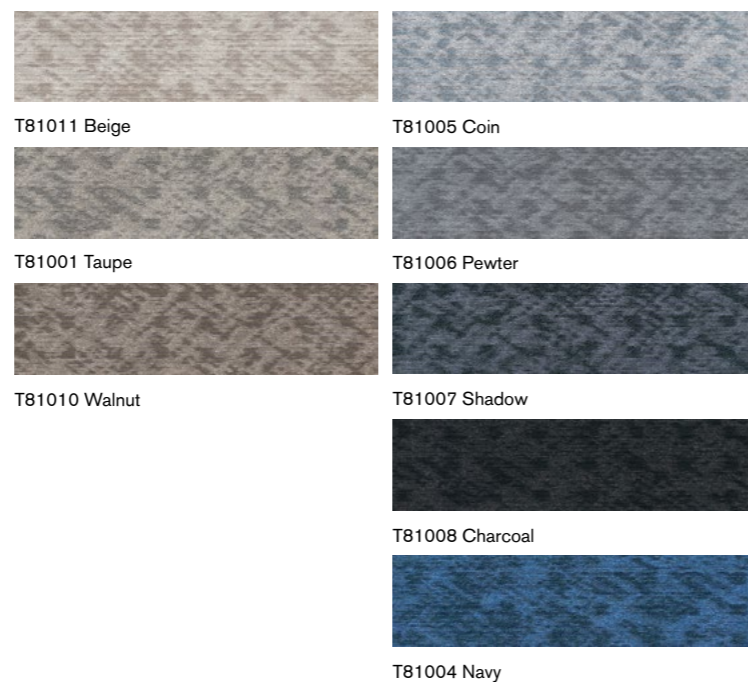
Foot Traffic 流量级别: Heavy

Treatment 附加工艺: STAINSHIELD™ 特殊防污处理 SOILGUARD™ 特殊防尘处理



T81004 / T81006 Ashlar

T810 ABSTRACT



T81011 Beige

T81005 Coin

T81001 Taupe

T81006 Pewter

T81010 Walnut

T81007 Shadow

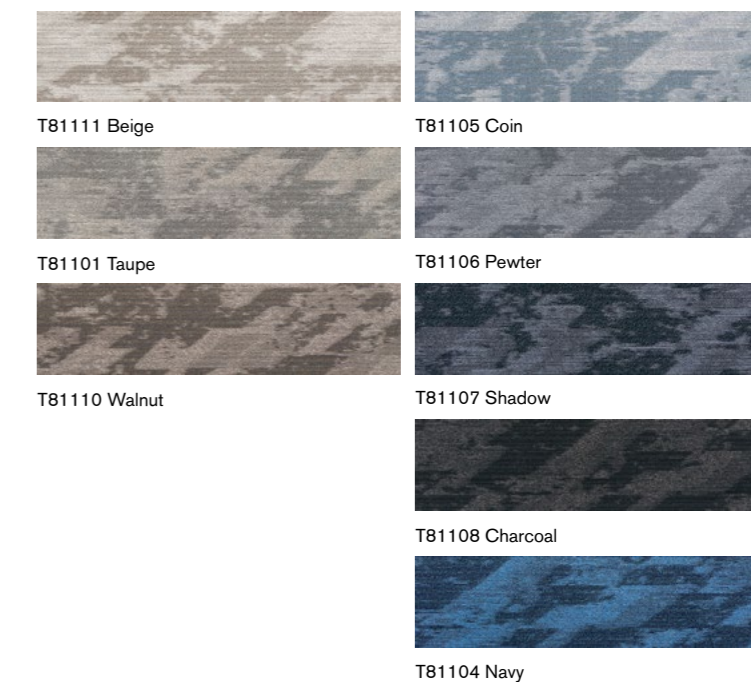
T81008 Charcoal

T81004 Navy



T81110 Ashlar

T811 CUBE



T81111 Beige

T81105 Coin

T81101 Taupe

T81106 Pewter

T81110 Walnut

T81107 Shadow

T81108 Charcoal

T81104 Navy

T810 / T811 are complementary to T812 / T813 series T810 / T811 可与 T812 / T813 搭配使用

Face Yarn 纤维成分: nexlon™ Premium Solution Dyed Nylon
耐可隆原着染尼龙

Construction 毯面结构: Hi / Mid / Lo Loop 高中低圈绒

Pile Height 织毯毛高: 5.5 / 5.0 / 3.0 mm

Tile Size 成品规格: 250 mm x 1000 mm

Standard Backing 标准化附底: TUNTEX Duraback

Foot Traffic 流量级别: Heavy

Treatment 附加工艺: **STAIN SHIELD™** 特殊防污处理 **SOIL GUARD™** 特殊防尘处理

T810 / T811 are complementary to T812 / T813 series T810 / T811 可与 T812 / T813 搭配使用

Face Yarn 纤维成分: nexlon™ Premium Solution Dyed Nylon
耐可隆原着染尼龙

Construction 毯面结构: Hi / Mid / Lo Loop 高中低圈绒

Pile Height 织毯毛高: 5.5 / 5.0 / 3.0 mm

Tile Size 成品规格: 250 mm x 1000 mm

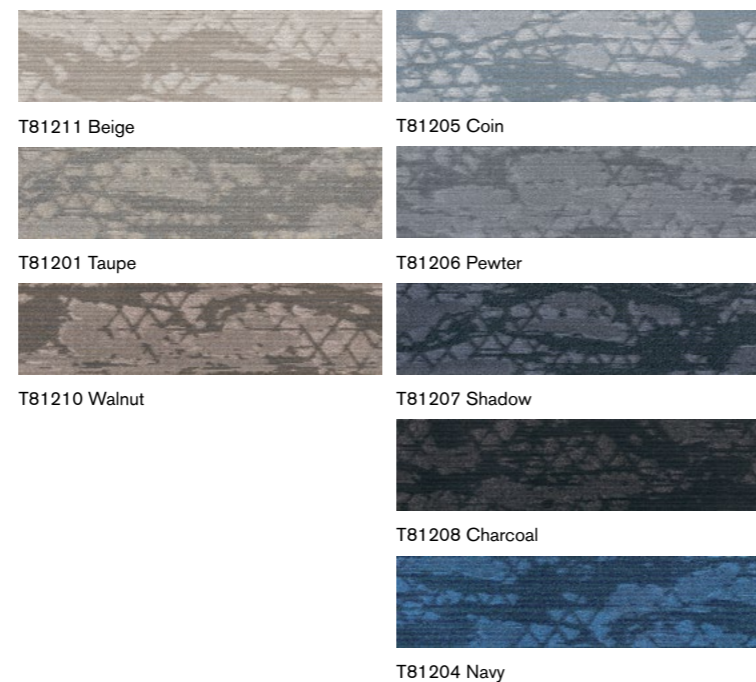
Standard Backing 标准化附底: TUNTEX Duraback

Foot Traffic 流量级别: Heavy

Treatment 附加工艺: **STAIN SHIELD™** 特殊防污处理 **SOIL GUARD™** 特殊防尘处理



T812 EXPRESSION



T810 / T811 are complementary to T812 / T813 series T810 / T811 可与 T812 / T813 搭配使用

Face Yarn 纤维成分: nexlon™ Premium Solution Dyed Nylon
 耐可隆原着染尼龙

Construction 毯面结构: Hi / Mid / Lo Loop 高中低圈绒

Pile Height 织毯毛高: 5.5 / 5.0 / 3.0 mm

Tile Size 成品规格: 250 mm x 1000 mm

Standard Backing 标准化附底: TUNTEX Duraback

Foot Traffic 流量级别: Heavy

Treatment 附加工艺: **STAIN SHIELD™** 特殊防污处理 **SOIL GUARD™** 特殊防尘处理



T813 NOUVEL



T810 / T811 are complementary to T812 / T813 series T810 / T811 可与 T812 / T813 搭配使用

Face Yarn 纤维成分: nexlon™ Premium Solution Dyed Nylon
 耐可隆原着染尼龙

Construction 毯面结构: Hi / Mid / Lo Loop 高中低圈绒

Pile Height 织毯毛高: 5.5 / 5.0 / 3.0 mm

Tile Size 成品规格: 250 mm x 1000 mm

Standard Backing 标准化附底: TUNTEX Duraback

Foot Traffic 流量级别: Heavy

Treatment 附加工艺: **STAIN SHIELD™** 特殊防污处理 **SOIL GUARD™** 特殊防尘处理



T81504 / T81505 Ashlar

T815 NIGHT FALLS



T81609 / T81616 Ashlar

T816 IMMERSE



Face Yarn 纤维成分: nexlon™ Premium Solution Dyed Nylon featured with aircell
耐可隆原着染尼龙 含 aircell 空灵纱

Construction 毯面结构: Hi / Mid / Lo Loop 高中低圈绒

Pile Height 织毯毛高: 7.0 / 4.5 / 3.5 mm

Tile Size 成品规格: 250 mm x 1000 mm

Standard Backing 标准化附底: TUNTEX Duraback

Foot Traffic 流量级别: Heavy

Treatment 附加工艺: **STAIN SHIELD™** 特殊防污处理 **SOIL GUARD™** 特殊防尘处理

Face Yarn 纤维成分: nexlon™ Premium Solution Dyed Nylon featured with quartz
耐可隆原着染尼龙 含 quartz 石英纱

Construction 毯面结构: Hi / Mid / Lo Loop 高中低圈绒

Pile Height 织毯毛高: 5.5 / 4.5 / 3.0 mm

Tile Size 成品规格: 250 mm x 1000 mm

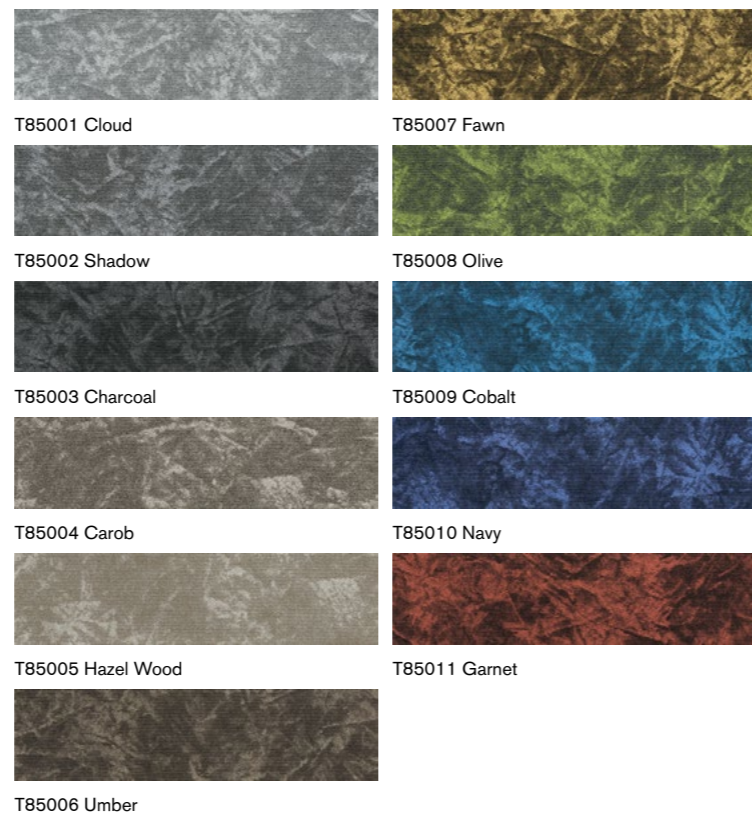
Standard Backing 标准化附底: TUNTEX Duraback

Foot Traffic 流量级别: Heavy

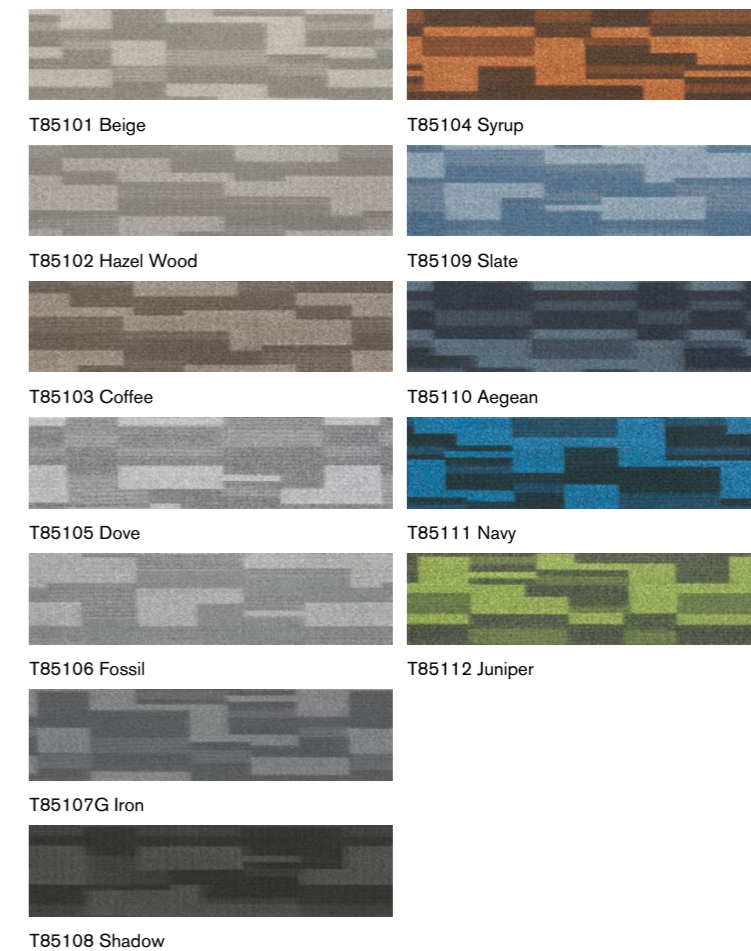
Treatment 附加工艺: **STAIN SHIELD™** 特殊防污处理 **SOIL GUARD™** 特殊防尘处理



T850 PAPER MACHE



T851 TETRIX



Face Yarn 纤维成分: nexlon™ Premium Solution Dyed Nylon featured with aircell
耐可隆原着染尼龙 含 aircell 空灵纱

Construction 毯面结构: Hi / Mid / Lo Loop 高中低圈绒

Pile Height 织毯毛高: 5.0 / 4.0 / 3.0 mm

Tile Size 成品规格: 250 mm x 1000 mm

Standard Backing 标准化附底: TUNTEX Duraback

Foot Traffic 流量级别: Heavy

Treatment 附加工艺: **STAIN SHIELD™** 特殊防污处理 **SOIL GUARD™** 特殊防尘处理

Face Yarn 纤维成分: nexlon™ Premium Solution Dyed Nylon
耐可隆原着染尼龙

Construction 毯面结构: Hi / Mid / Lo Loop 高中低圈绒

Pile Height 织毯毛高: 5.0 / 4.5 / 3.0 mm

Tile Size 成品规格: 250 mm x 1000 mm

Standard Backing 标准化附底: TUNTEX Duraback

Foot Traffic 流量级别: Heavy

Treatment 附加工艺: **STAIN SHIELD™** 特殊防污处理 **SOIL GUARD™** 特殊防尘处理



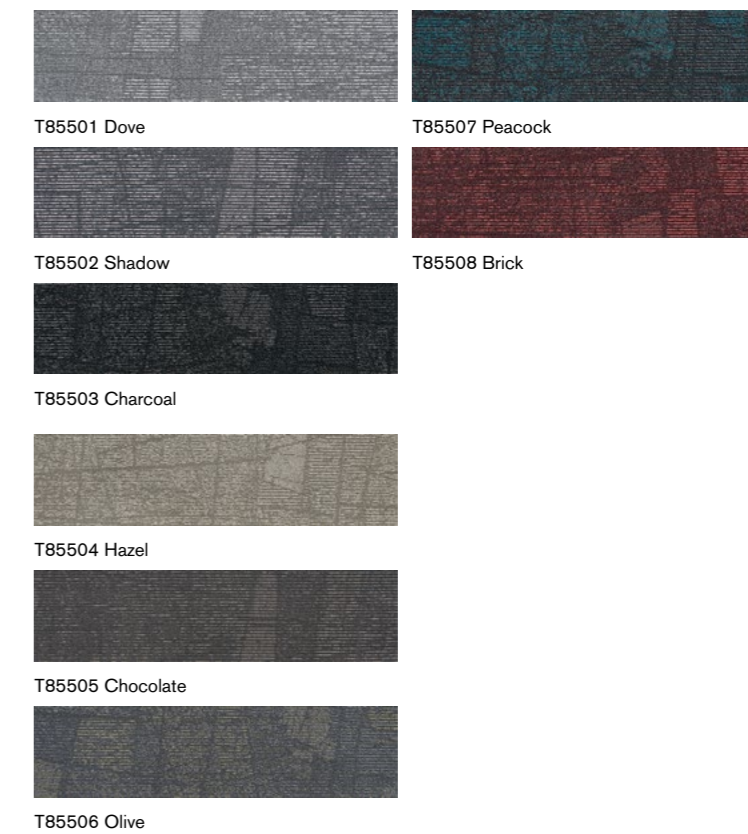
T85203 / T85205 / T85206 Ashlar

T852 RIPPLE



T85501 / T85502 Ashlar

T855 REFLECTION



Face Yarn 纤维成分: nexlon™ Premium Solution Dyed Nylon featured with aircell
耐可隆原着染尼龙 含 aircell 空灵纱

Construction 毯面结构: Hi / Mid / Lo Loop 高中低圈绒

Pile Height 织毯毛高: 6.0 / 5.0 / 3.5 mm

Tile Size 成品规格: 250 mm x 1000 mm

Standard Backing 标准化附底: TUNTEX Duraback

Foot Traffic 流量级别: Heavy

Treatment 附加工艺: **STAIN SHIELD™** 特殊防污处理 **SOIL GUARD™** 特殊防尘处理



Face Yarn 纤维成分: nexlon™ Premium Solution Dyed Nylon featured with aircell
耐可隆原着染尼龙 含 aircell 空灵纱

Construction 毯面结构: Hi / Mid / Lo Loop 高中低圈绒

Pile Height 织毯毛高: 5.5 / 5.0 / 3.5 mm

Tile Size 成品规格: 250 mm x 1000 mm

Standard Backing 标准化附底: TUNTEX Duraback

Foot Traffic 流量级别: Heavy

Treatment 附加工艺: **STAIN SHIELD™** 特殊防污处理 **SOIL GUARD™** 特殊防尘处理



T85605 / T85607 Ashlar

T856 MOSAIC



T85710 / T85712 Ashlar

T857 TREE WALK



Face Yarn 纤维成分: nexlon™ Premium Solution Dyed Nylon featured with aircell
 耐可隆原着染尼龙 含 aircell 空灵纱

Construction 毯面结构: Hi / Mid / Lo Loop 高中低圈绒

Pile Height 织毯毛高: 5.5 / 5.0 / 3.5 mm

Tile Size 成品规格: 250 mm x 1000 mm

Standard Backing 标准化附底: TUNTEX Duraback

Foot Traffic 流量级别: Heavy

Treatment 附加工艺: **STAIN SHIELD™** 特殊防污处理 **SOIL GUARD™** 特殊防尘处理



Face Yarn 纤维成分: nexlon™ Premium Solution Dyed Nylon featured with aircell
 耐可隆原着染尼龙 含 aircell 空灵纱

Construction 毯面结构: Multi Hi / Lo Loop 高低渐变圈绒

Pile Height 织毯毛高: 6.0 - 4.0 mm

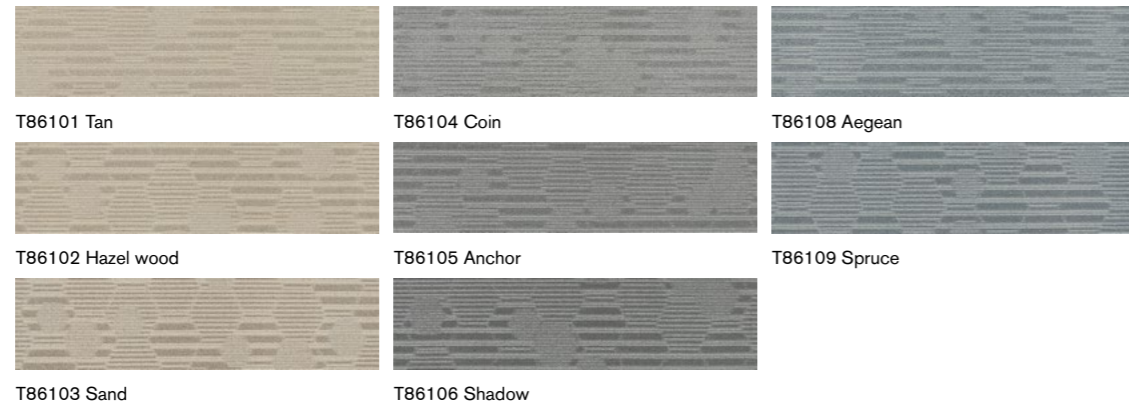
Tile Size 成品规格: 250 mm x 1000 mm

Standard Backing 标准化附底: TUNTEX Duraback

Foot Traffic 流量级别: Heavy

Treatment 附加工艺: **STAIN SHIELD™** 特殊防污处理 **SOIL GUARD™** 特殊防尘处理

T861 BUMBLEBEES



aircell™

Face Yarn 纤维成分:	nexlon™ Premium Solution Dyed Nylon featured with aircell 耐可隆原着染尼龙 含 aircell 空灵纱
Construction 毯面结构:	Hi / Mid / Lo Loop 高中低圈绒
Pile Height 织毯毛高:	6.0 / 5.5 / 3.0 mm
Tile Size 成品规格:	250 mm x 1000 mm
Standard Backing 标准化附底:	TUNTEX Duraback
Foot Traffic 流量级别:	Heavy
Treatment 附加工艺:	STAINSHIELD™ 特殊防污处理 SOILGUARD™ 特殊防尘处理

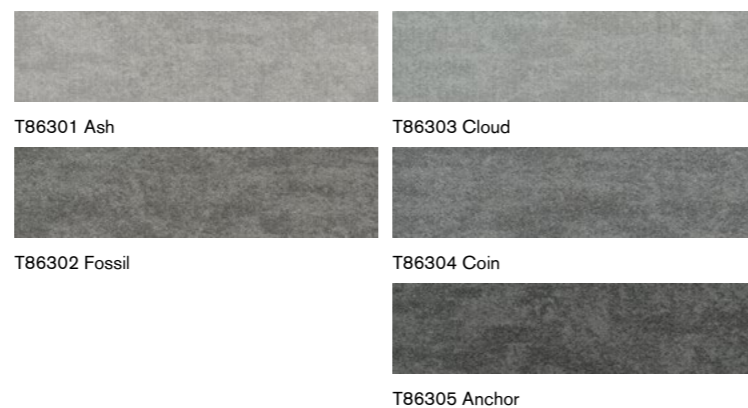


T86101 / T86102 / T86103 / T86104 / T86105 / T86106 Ashlar



T86301 / T86302 Ashlar

T863 MAGNETITE



T86301 Ash

T86303 Cloud

T86302 Fossil

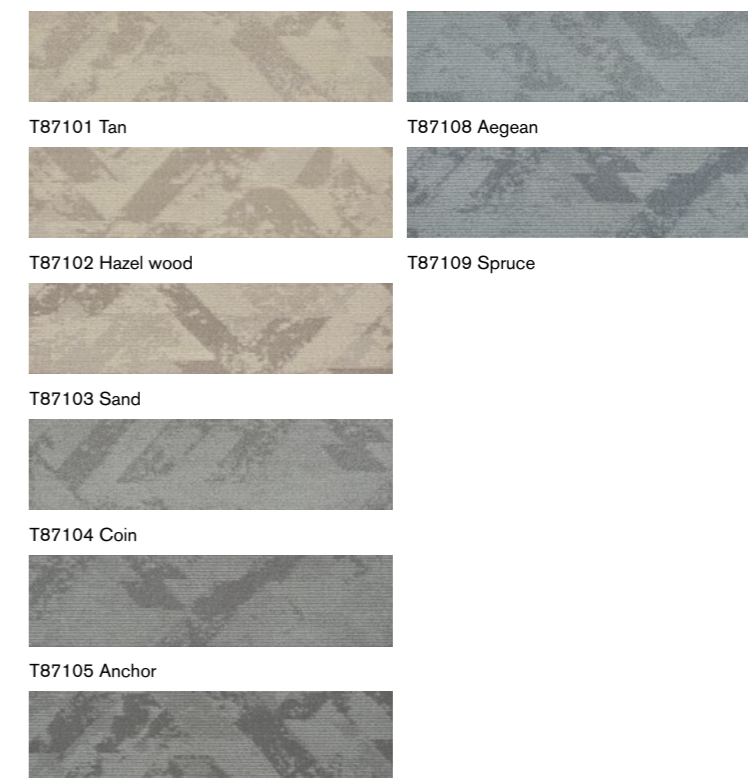
T86304 Coin

T86305 Anchor



T87102 / T87108 / T87109 Herringbone

T871 ICE SHARDS



T87101 Tan

T87108 Aegean

T87102 Hazel wood

T87109 Spruce

T87103 Sand

T87104 Coin

T87105 Anchor

T87106 Shadow



Face Yarn 纤维成分: nexlon™ Premium Solution Dyed Nylon featured with aircell
耐可隆原着染尼龙 含 aircell 空灵纱

Construction 毯面结构: Hi / Lo Loop 高低圈绒

Pile Height 织毯毛高: 5.5 / 3.0 mm

Tile Size 成品规格: 250 mm x 1000 mm

Standard Backing 标准化附底: TUNTEX Duraback

Foot Traffic 流量级别: Heavy

Treatment 附加工艺: **STAIN SHIELD™** 特殊防污处理 **SOIL GUARD™** 特殊防尘处理



Face Yarn 纤维成分: nexlon™ Premium Solution Dyed Nylon featured with aircell
耐可隆原着染尼龙 含 aircell 空灵纱

Construction 毯面结构: Hi / Lo Loop 高低圈绒

Pile Height 织毯毛高: 5.8 / 3.0 mm

Tile Size 成品规格: 250 mm x 1000 mm

Standard Backing 标准化附底: TUNTEX Duraback

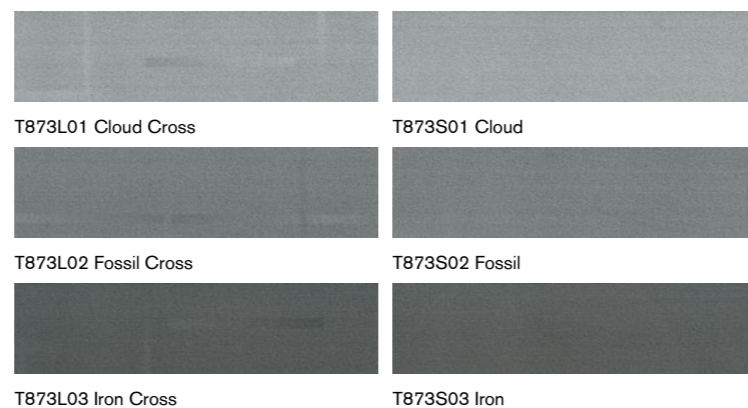
Foot Traffic 流量级别: Heavy

Treatment 附加工艺: **STAIN SHIELD™** 特殊防污处理 **SOIL GUARD™** 特殊防尘处理



T873L01 / T873L02 / T873L03 Ashlar / Herringbone

T873 TIDE



T873L01 Cloud Cross

T873S01 Cloud

T873L02 Fossil Cross

T873S02 Fossil

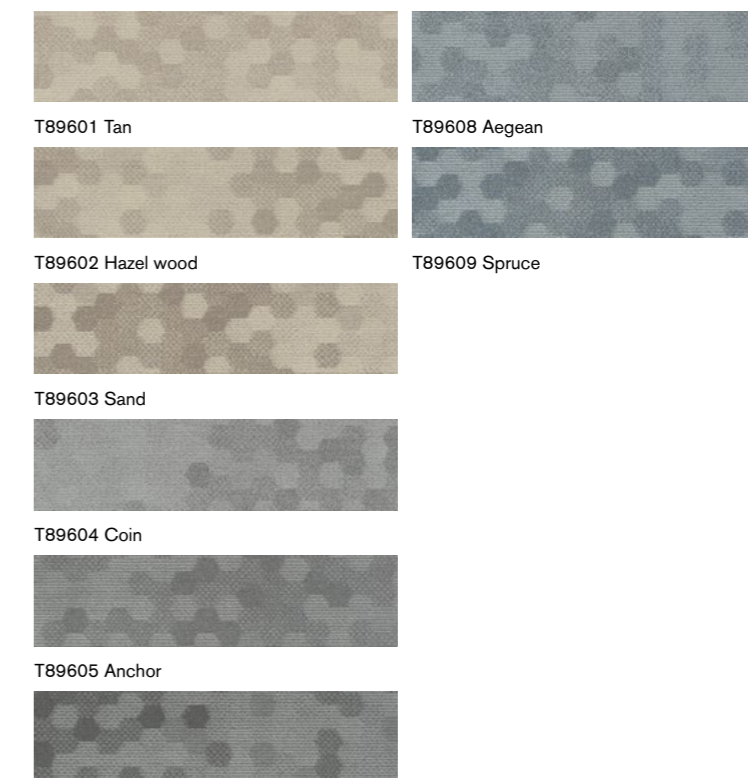
T873L03 Iron Cross

T873S03 Iron



T89604 / T89605 Ashlar

T896 SNOWFLAKES



T89601 Tan

T89608 Aegean

T89602 Hazel wood

T89609 Spruce

T89603 Sand

T89604 Coin

T89605 Anchor

T89606 Shadow



Face Yarn 纤维成分: nexlon™ Premium Solution Dyed Nylon featured with aircell
耐可隆原着染尼龙 含 aircell 空灵纱

Construction 毯面结构: Multi Hi / Lo Loop 高低渐变圈绒

Pile Height 织毯毛高: 6.0 - 4.0 mm

Tile Size 成品规格: 250 mm x 1000 mm

Standard Backing 标准化附底: TUNTEX Duraback

Foot Traffic 流量级别: Heavy

Treatment 附加工艺: **STAIN SHIELD™** 特殊防污处理 **SOIL GUARD™** 特殊防尘处理



Face Yarn 纤维成分: nexlon™ Premium Solution Dyed Nylon featured with aircell
耐可隆原着染尼龙 含 aircell 空灵纱

Construction 毯面结构: Hi / Lo Loop 高低圈绒

Pile Height 织毯毛高: 6.5 / 3.0 mm

Tile Size 成品规格: 250 mm x 1000 mm

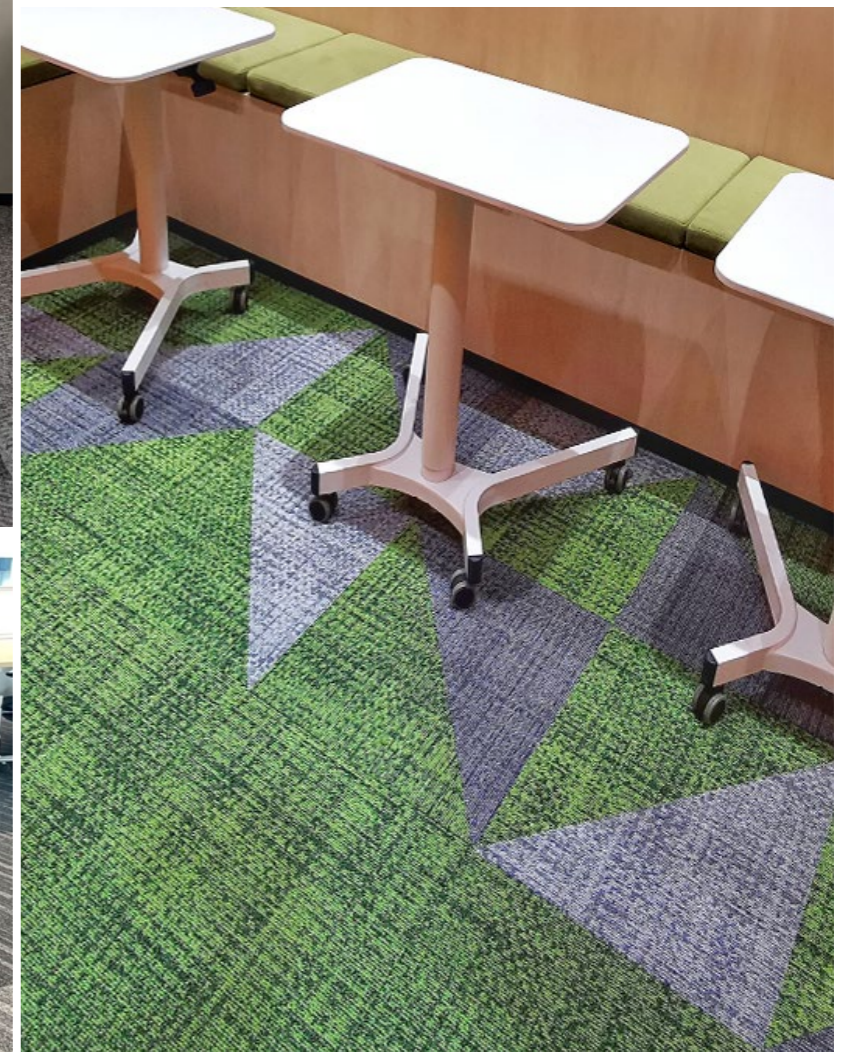
Standard Backing 标准化附底: TUNTEX Duraback

Foot Traffic 流量级别: Heavy

Treatment 附加工艺: **STAIN SHIELD™** 特殊防污处理 **SOIL GUARD™** 特殊防尘处理

SHOWCASES

案例展示



上海办事处

上海市闵行区申虹路 666 号虹桥正荣中心
1 号楼 3F, 201106
电话 : +86 400 663 8686
邮箱 : ShangHai@tuntexcarpet.com

台湾办事处

台湾省台南市中西区成功路 1 号, 70050
电话 : +852 9181 9610
邮箱 : Taiwan@tuntexcarpet.com

香港办事处

香港九龙观塘鸿图道 31 号鸿贸中心 2306 室, 852
电话 : +852 28580353
邮箱 : HongKong@tuntexcarpet.com

日本办事处

3-16-10, Yushima, Bunkyo, Tokyo, 113-0034, Japan
电话 : +81 3 38345148
邮箱 : Japan@tuntex-carpet.com

新加坡办事处 < 东南亚 >

No. 60 Paya Lebar Rd., #10-43 Paya Lebar Square,
Singapore, 409051
电话 : + +65 9040 0991
邮箱 : SouthEastAsia@tuntexcarpet.com

英国办事处 < 欧洲 / 中东 / 非洲 / 印度 >

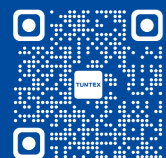
Yoxall Lodge, Scotch Hill Rd., Newchurch, Burton on Trent,
DE13 8RL, UK
电话 : +44 7836 506105
邮箱 : UK@tuntexcarpet.com

澳大利亚办事处 < 澳大利亚 / 纽西兰 >

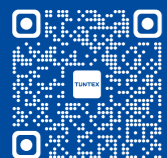
5 Coolaroo Avenue, Hurstbridge, Victoria, 3099, Australia
电话 : +86 182 0622 3276
邮箱 : Australia@tuntexcarpet.com

墨西哥办事处 < 中南美洲 >

General Salvador Alvarado 56. Col. Escandon I secc. Del.
Miguel Hidalgo. CP 11800. Mexico
电话 : +52 1 55 1654 0939
邮箱 : LatinAmerica@tuntexcarpet.com



Official Website



Official Wechat

