

# TIMES SQUARE

T722G

DONATE  
ADVOCATE  
VOLUNTEER  
foodbanknyc.org

400,000 NYC CHILDREN HAVE TOO MUCH HUNGER

Nasdaq

DOUGH!

spotify  
FRENCH!  
The new album from twenty one pilots

50% OFF

Jolly

FDK

WARM DRY CONTENT

CALL-OUT BLACK OPS

"WE'RE A COUPLE. WE DON'T WANT TWIN BEDS."

TUNTEX™

Thomson Reuters

THOMSON REUTERS

THOMSON REUTERS

THOMSON REUTERS

# Picturesque

It's sunset. You see the silky, smooth collusion of sky burst red and yellow that's going to slowly merge into the calm of the night once again, with only the lights left from all the skyscrapers grace the dark sky.



Color: T72202G / V271-1

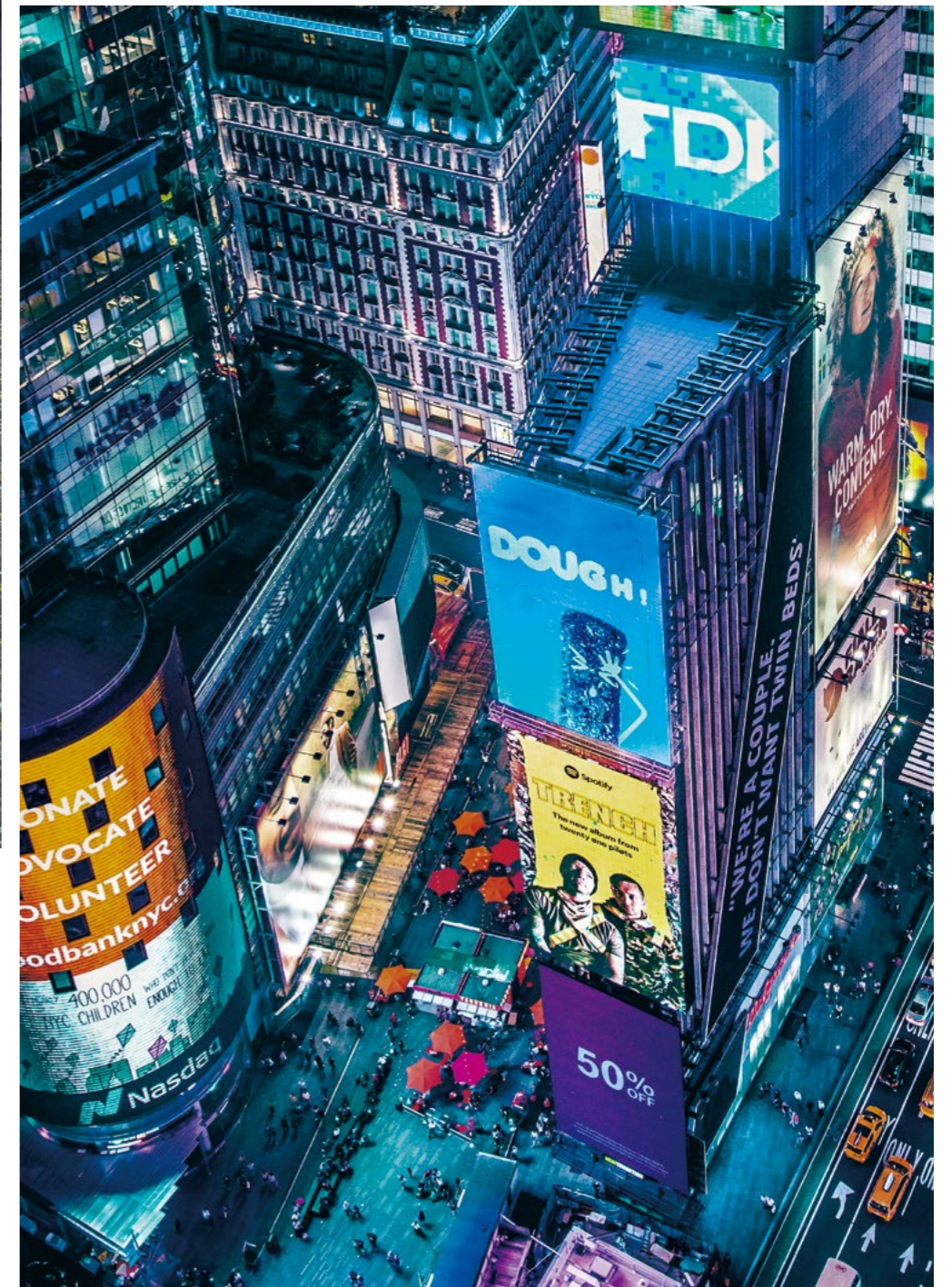


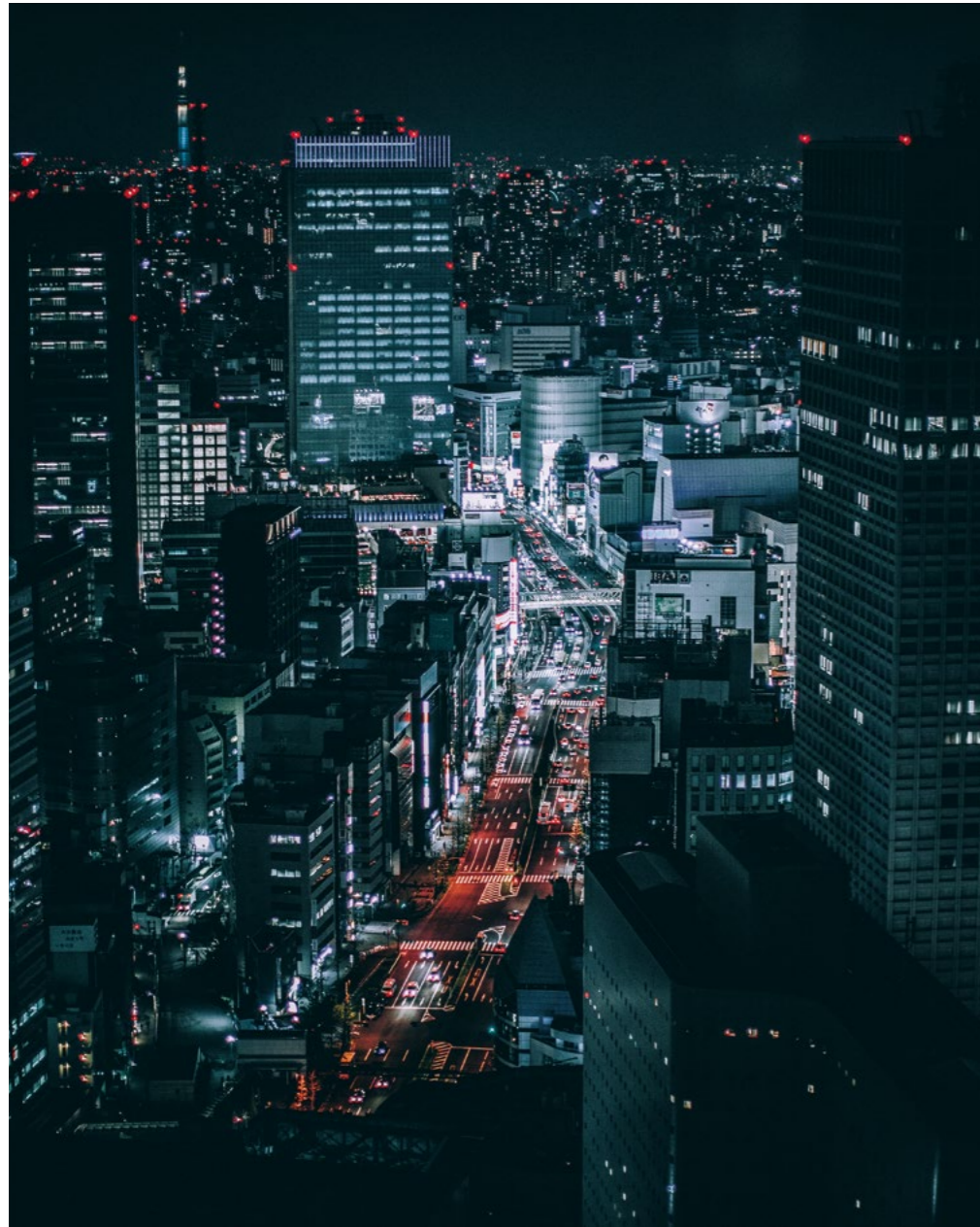
Color: T72207G

# Flourishing

NYC Times Square is brightly adorned with billboards, making it look like day. People are talking around you and cars are honking, but you're impervious to them because you're captivated by all the lights.

All images are computer generated files and may not exactly represent actual installation appearance and tile seams. Full tiles can be provided if required.





Color: T72208G

# Cosmopolitan

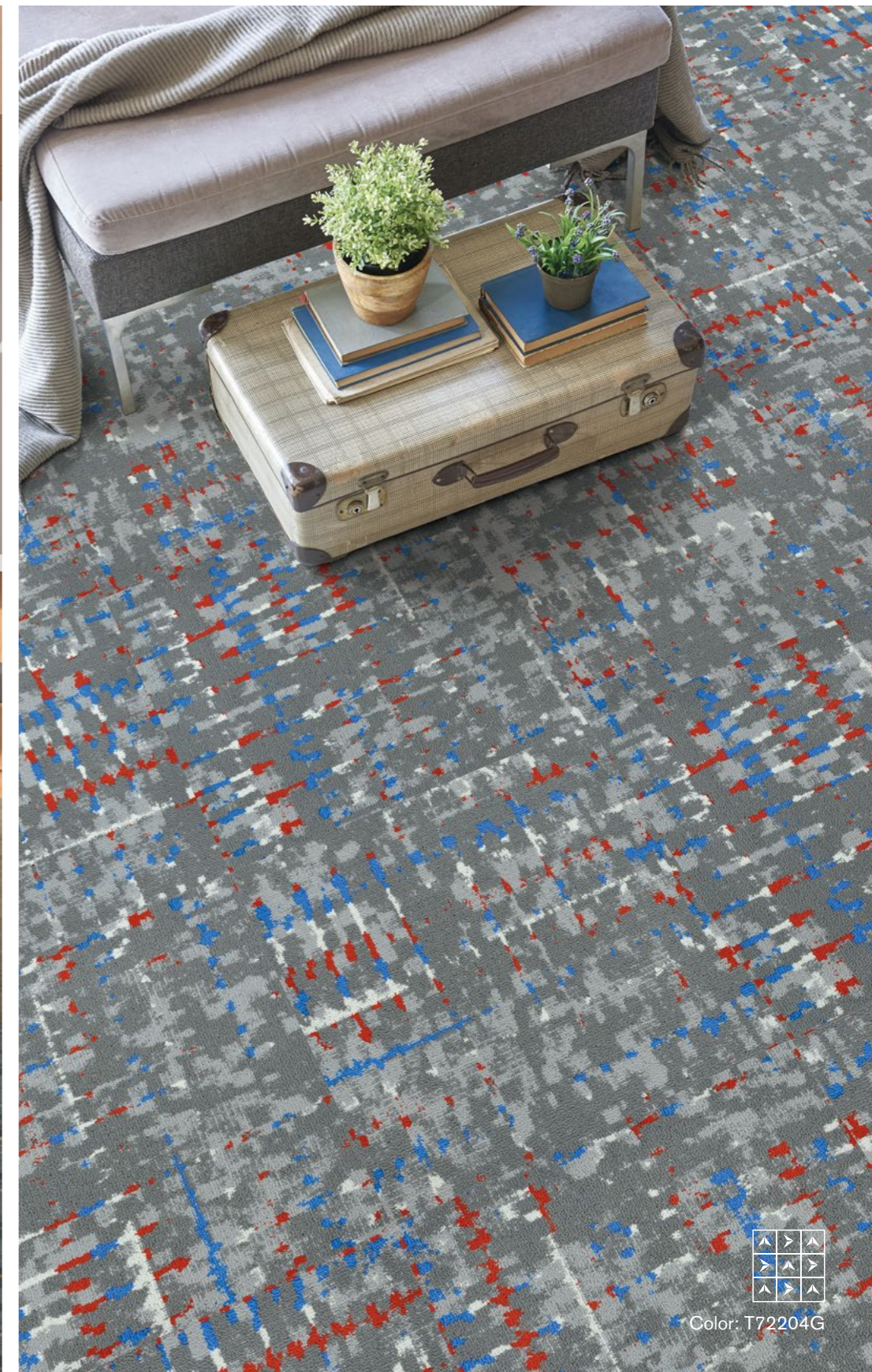
Do you ever enjoy the view of metropolitan areas at night on your way home? The tail lights of cars swoosh by as you drive past, and the lights from the buildings around you embellish the night sky above you.

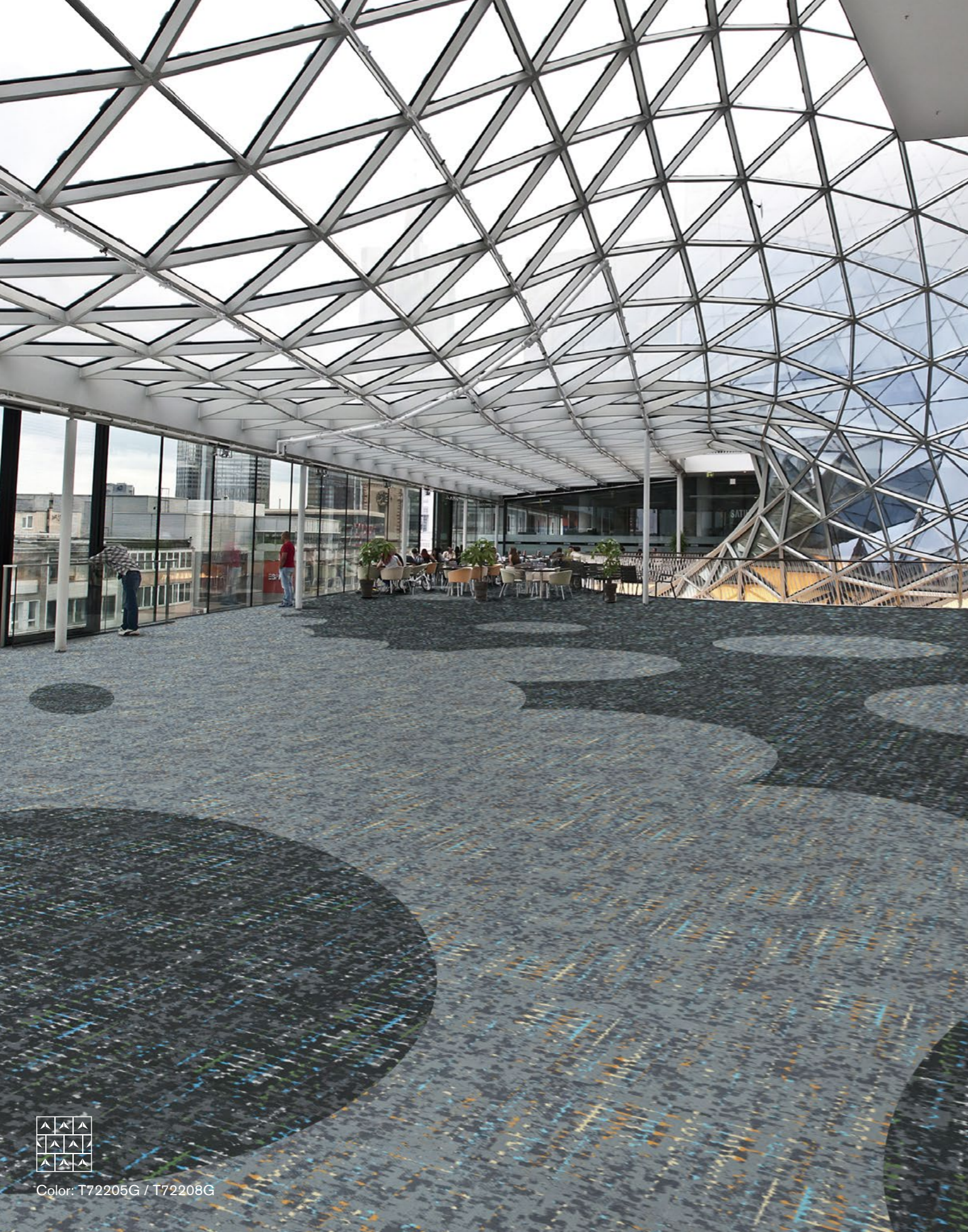


Color: T72201G / T72202G / T72204G / T72205G









Color: T72205G / T72208G

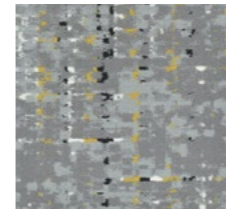


Color: T72201G / T72205G / T72207G / T72208G

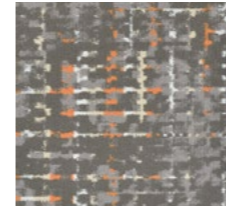




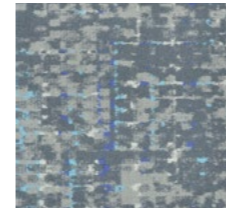
Color: T72202G / T72203G



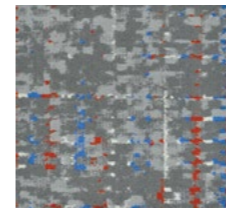
T72201G Long Island



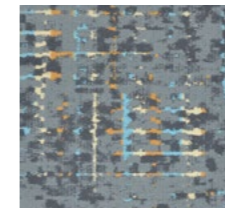
T72202G Rockefeller



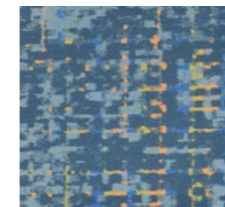
T72203G Soho



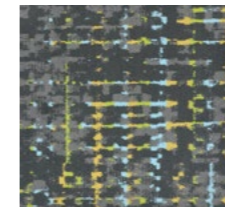
T72204G Central Park



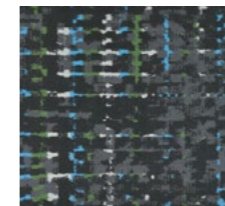
T72205G Midtown



T72206G Yankee



T72207G Manhattan



T72208G Broadway

<b>Style</b>	T722G "Times Square"
<b>Construction</b>	Multi Hi / Lo Loop
<b>Pile Fibre</b>	nexlon™ Standard + Prisma Premium Solution Dyed Nylon with Stain and Soil Resist technology
<b>Dye Method</b>	Solution Dyed
<b>Gauge</b>	1 / 10G
<b>Pile Height</b>	9.0 - 4.5mm
<b>Total Thickness</b>	11.0mm(±0.5mm)
<b>Tile size</b>	500mm x 500mm
<b>Total Weight</b>	Approx. 6400g / m <sup>2</sup>
<b>Secondary Back</b>	RECYCLED TUNTEX Commercial Duraback
<b>Wear Warranty</b>	Product is warranted not to lose more than 10% pile fibre by weight in normal commercial use within 15 years.
<b>Colour Fastness</b>	15 Year Warranty AATCC 16. Grade 4 - Little or no change.
<b>Static Electricity</b>	Permanent Lifetime Protection - less than 2.0 KV.
<b>Stain Resistance</b>	Stainshield Treatment: <b>STAINSHIELD™</b>
<b>Soil Resistance</b>	Soil Guard Treatment: <b>SOILGUARD™</b>
<b>Odor Reducer</b>	Ecofresh Treatment: <b>ECOFRESH™</b>
<b>Anti-microbial</b>	Microshield Treatment: <b>MICROSHIELD™</b>
<b>Dimensional Stability</b>	Warranted not to change in size by more than 0.5 mm in normal use. Will not dome or dish in normal use.
<b>Installation</b>	Tackifier or Releasable adhesive Recommended.
<b>Sustainability</b>	All yarns used are Solution dyed to minimise use of water and exclude any effluent production. ISO 14001 and ISO 9001.

Health Product Declaration (HPD) Third Party verified by U.S. GreenCircle Certified.

Environmental Product Declaration (EPD) certified by UL.

U.S. CRI Green Label Plus Certificate.

Singapore Green Building Council Product Certificate - 4 Ticks "Leader".

Passes ASTM Flammability Test.  
Flammability: Passes (ASTM E648)  
Smoke Density: Passes (ASTM E662)

Passes AATCC Static Propensity Test.  
Static Propensity: ≤3.5 KV (AATCC 134)

Passes the Quality Test of China National Carpet Quality Test Center.

Passes the Flammability Test and Environmental Protection Test of the China National Fire and Construction Quality Surveillance Center.

ISO 9001 Quality Management System.

ISO 14001 Environmental Management System.

ISO 45001 Healthy & Safety Management System.

Passes EN 13501 European Fire Test Bfl.

Passes EN 1307 Wear Rating Class 33 - Heavy Commercial.



