

# Crystalline

## T721G



**TUNTEX™**

# Elegant

Diamonds are often perceived as deluxe and high-end, which is what the R.O.A. Reinvented product series is to us – it's the diamond collection among flooring solutions.



T72101G / T72107G Brick





T72107G Quarter-Turn





T72102G / T72106G Ashlar





T72103G Quarter-Turn



T72103G / T72106G Brick



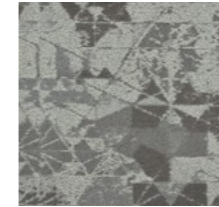
T72101G Quarter-Turn



T72109G Brick



T72101G Ivory



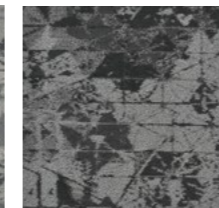
T72102G Grit



T72103G Element



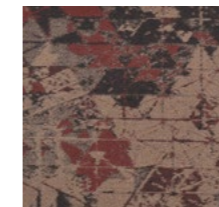
T72104G Lunar



T72106G Ebony



T72107G Sapphire



T72108G Ruby



T72109 Argent

<b>Style</b>	T721G "Crystalline"
<b>Construction</b>	Multi Hi / Lo Loop
<b>Pile Fibre</b>	nexlon™ Premium Solution Dyed Nylon featured with aircell and quartz
<b>Dye Method</b>	Solution Dyed
<b>Gauge</b>	1 / 10G
<b>Pile Height</b>	5.0 - 3.0mm
<b>Total Thickness</b>	8.5mm(±0.5mm)
<b>Tile size</b>	500mm x 500mm
<b>Total Weight</b>	Approx. 6250g / m <sup>2</sup>
<b>Secondary Back</b>	TUNTEX Duraback
<b>Stain Resistance</b>	Stainshield Treatment: <b>STAINSHIELD™</b>
<b>Soil Resistance</b>	Soil Guard Treatment: <b>SOILGUARD™</b>
<b>Odor Reducer</b>	Ecofresh Treatment: <b>ECOFRESH™</b>
<b>Anti-microbial</b>	Microshield Treatment: <b>MICROSHIELD™</b>

<b>Wear Warranty</b>	Product is warranted not to lose more than 10% pile fibre by weight in normal commercial use within 15 years.
<b>Colour Fastness</b>	15 Year Warranty AATCC 16. Grade 4 - Little or no change.
<b>Static Electricity</b>	Permanent Lifetime Protection - less than 2.0 KV.
<b>Dimensional Stability</b>	Warranted not to change in size by more than 0.5 mm in normal use. Will not dome or dish in normal use.
<b>Installation</b>	Tackifier or Releasable adhesive Recommended.
<b>Sustainability</b>	All yarns used are Solution dyed to minimise use of water and exclude any effluent production. ISO 14001 and ISO 9001.

Health Product Declaration (HPD) Third Party verified by U.S. GreenCircle Certified.

U.S. CRI Green Label Plus Certificate.

Singapore Green Building Council Product Certificate - 4 Ticks "Leader".

Passes ASTM Flammability Test.  
Flammability: Passes (ASTM E648)  
Smoke Density: Passes (ASTM E662)

Passes AATCC Static Propensity Test.  
Static Propensity: ≤ 2.0 KV (AATCC 134)

Passes the Quality Test of China National Carpet Quality Test Center.

Passes the Flammability Test and Environmental Protection Test of the China National Fire and Construction Quality Surveillance Center.

ISO 9001 Quality Management System.

ISO 14001 Environmental Management System.

ISO 45001 Healthy & Safety Management System.





