



Bumblebees

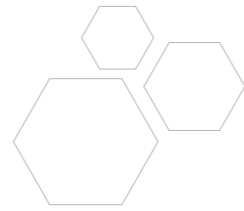
T861



TUNTEX™

Geometry in Nature

Geometry in Nature collection explores the power and mystery of the earth. T861 Bumblebees, T871 Ice Shards, and T896 Snowflakes interpret the iconic shapes that show up in nature.



T861 Bumblebees recreates classic hexagon patterns. Each side perfectly matches the other to create a classic look, while the bumblebee-like strip graphics bring more creativity to the flooring layout.





T86101 / T86103 Herringbone



T86105 / T86106 Ashlar



T86108 / T86109 Herringbone



T86101 / T86103 Ashlar



T86101 / T86102 / T86103 / T86104 / T86105 / T86106 Ashlar



T86101 / T86105 Herringbone



T86101 Tan



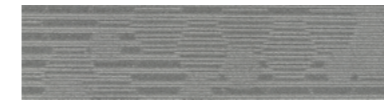
T86102 Hazel wood



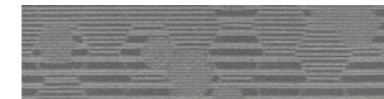
T86103 Sand



T86104 Coin



T86105 Anchor



T86106 Shadow



T86108 Aegean



T86109 Spruce

Style	T861 "Bumblebees"
Construction	Hi / Mid / Lo Loop
Pile Fibre	nexlon™ Premium Solution Dyed Nylon featured with aircell
Dye Method	Solution Dyed
Gauge	1 / 12G
Pile Height	6.0 / 5.5 / 3.0mm
Total Thickness	7.4mm(±0.5mm)
Tile size	250mm x 1000mm
Total Weight	Approx. 4950g / m ²
Secondary Back	TUNTEX Duraback
Stain Resistance	Stainshield Treatment: STAIN SHIELD™
Soil Resistance	Soil Guard Treatment: SOIL GUARD™

Wear Warranty	Product is warranted not to lose more than 10% pile fibre by weight in normal commercial use within 15 years.
Colour Fastness	15 Year Warranty AATCC 16. Grade 4 - Little or no change.
Static Electricity	Permanent Lifetime Protection - less than 2.0 KV.
Dimensional Stability	Warranted not to change in size by more than 0.5 mm in normal use. Will not dome or dish in normal use.
Installation	Tackifier or Releasable adhesive Recommended.
Sustainability	All yarns used are Solution dyed to minimise use of water and exclude any effluent production. ISO 14001 and ISO 9001.

Health Product Declaration (HPD) Third Party verified by U.S. GreenCircle Certified.

U.S. CRI Green Label Plus Certificate.

Singapore Green Building Council Product Certificate - 4 Ticks "Leader".

Passes ASTM Flammability Test.
Flammability: Passes (ASTM E648)
Smoke Density: Passes (ASTM E662)

Passes AATCC Static Propensity Test.
Static Propensity: ≤ 2.0 KV (AATCC 134)

Passes the Quality Test of China National Carpet Quality Test Center.

Passes the Flammability Test and Environmental Protection Test of the China National Fire and Construction Quality Surveillance Center.

ISO 9001 Quality Management System.

ISO 14001 Environmental Management System.

ISO 45001 Healthy & Safety Management System.



