



# Space Cloud

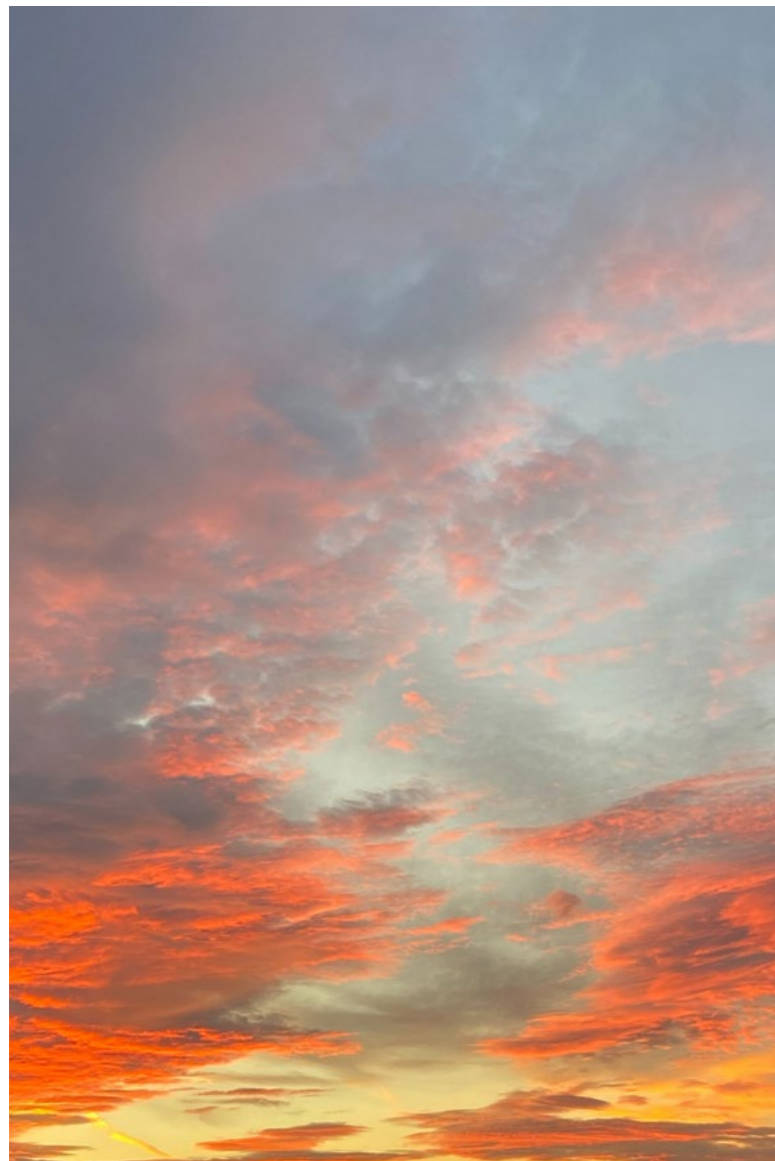
T707G

**TUNTEX™**



# Space Cloud

T707G Space Cloud draws inspiration from the free and fluid nature of clouds in the sky. Its dynamic graphic design and vibrant colors create an energetic and lively indoor atmosphere.















T7071G Quarter-Turn

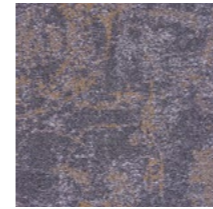


T7074G Quarter-Turn

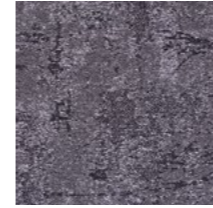




T7077G Quarter-Turn



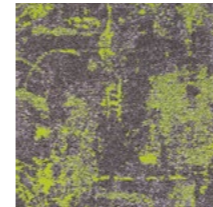
T7071G Saturn



T7072G Tornado



T7073G Jupiter



T7074G Lime Halo



T7075G Mars



T7077G Aurora

<b>Style</b>	T707G "Space Cloud"
<b>Construction</b>	Multi Hi / Lo Loop
<b>Pile Fibre</b>	nexlon™ Premium Solution Dyed Nylon
<b>Dye Method</b>	Solution Dyed
<b>Gauge</b>	1 / 10G
<b>Pile Height</b>	5.0 - 3.0mm
<b>Total Thickness</b>	8.7mm(±0.5mm)
<b>Tile size</b>	500mm x 500mm
<b>Total Weight</b>	Approx. 5650g / m <sup>2</sup>
<b>Secondary Back</b>	TUNTEX Duraback
<b>Stain Resistance</b>	Stainshield Treatment: <b>STAINSHIELD™</b>
<b>Soil Resistance</b>	Soil Guard Treatment: <b>SOILGUARD™</b>
<b>Odor Reducer</b>	Ecofresh Treatment: <b>ECOFRESH™</b>
<b>Anti-microbial</b>	Microshield Treatment: <b>MICROSHIELD™</b>
<hr/>	
<b>Wear Warranty</b>	Product is warranted not to lose more than 10% pile fibre by weight in normal commercial use within 15 years.
<b>Colour Fastness</b>	15 Year Warranty AATCC 16. Grade 4 - Little or no change.
<b>Static Electricity</b>	Permanent Lifetime Protection - less than 2.0 KV.
<b>Dimensional Stability</b>	Warranted not to change in size by more than 0.5 mm in normal use. Will not dome or dish in normal use.
<b>Installation</b>	Tackifier or Releasable adhesive Recommended.
<b>Sustainability</b>	All yarns used are Solution dyed to minimise use of water and exclude any effluent production. ISO 14001 and ISO 9001.

Health Product Declaration (HPD) Third Party verified by U.S. GreenCircle Certified.

U.S. CRI Green Label Plus Certificate.

Singapore Green Building Council Product Certificate - 4 Ticks "Leader".

Passes ASTM Flammability Test.  
Flammability: Passes (ASTM E648)  
Smoke Density: Passes (ASTM E662)

Passes AATCC Static Propensity Test.  
Static Propensity: ≤ 2.0 KV (AATCC 134)

Passes the Quality Test of China National Carpet Quality Test Center.

Passes the Flammability Test and Environmental Protection Test of the China National Fire and Construction Quality Surveillance Center.

ISO 9001 Quality Management System.

ISO 14001 Environmental Management System.

ISO 45001 Healthy & Safety Management System.





