

The logo for SKATE T663 features a blue square on the left containing a white grid pattern of six squares. To the right of this square, the word "SKATE" is written in a large, bold, white sans-serif font, and "T663" is written below it in a smaller, white sans-serif font.

SKATE
T663



SKATE FLOOR

Ice skates draw smooth lines but leaves behind complex tracks.
Inspired by figure skating, the designer uses fine lines to recreate the smoothness and elegance of the ice rink into an exceptional and elegant office space.



Color: T66302 / T66306 / T66309



Color: T66303 / T66306

Trail

Sharp lines, Marvelous curves.
Trailing behind the skater are swift circles imprinted by the blade.

All images are computer generated files and may not exactly represent actual installation appearance and tile seams.
Full tiles can be provided if required.



Color: T66304 / T66309

Brilliance

Years of training. Days and nights of practice. Skaters swift into the rink for their time to shine.

T663
product description





Color: T66302 / T66303 / T66304



Color: T66301 / T66302 / T66303





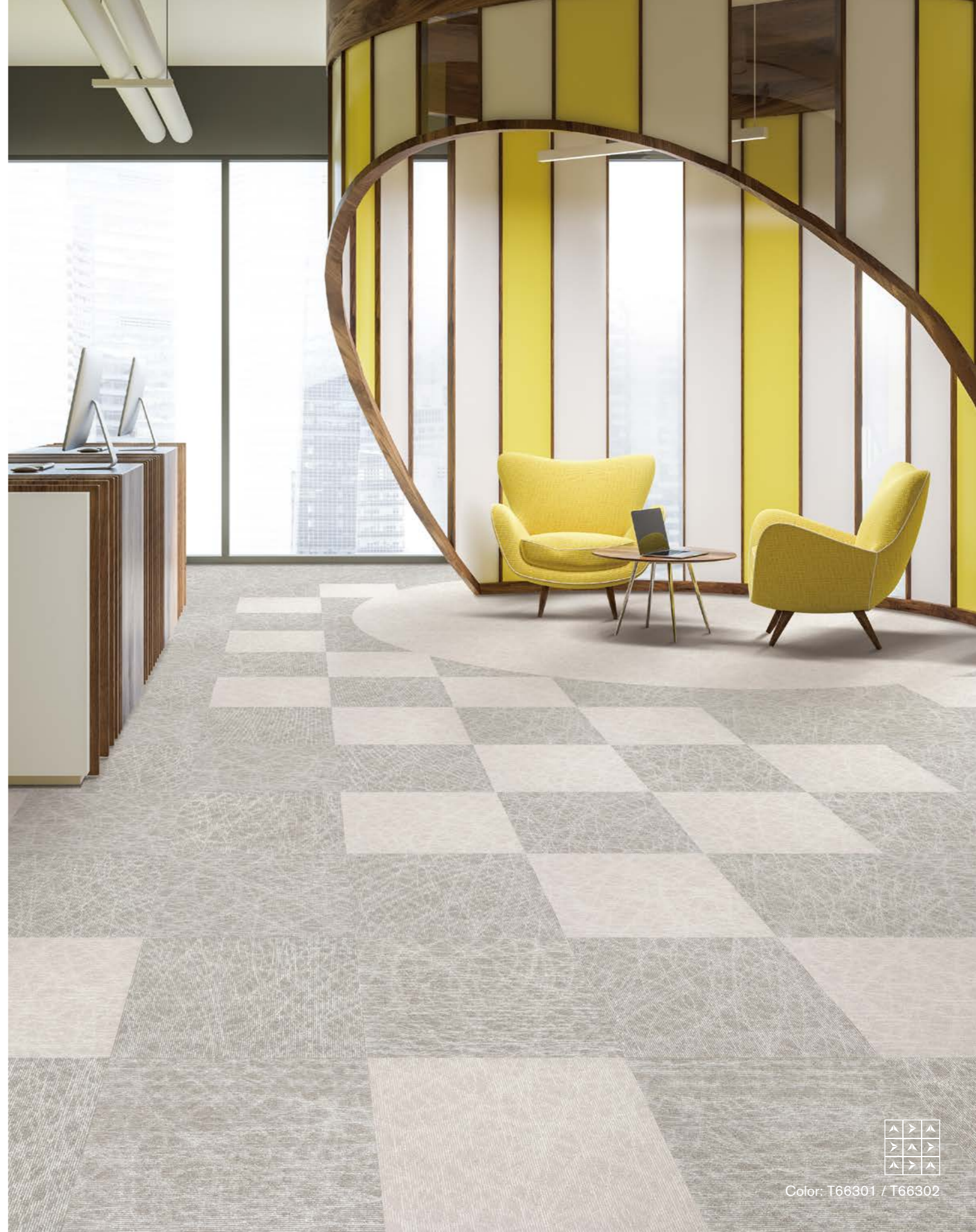
Color: T66307 / T66306 / T66309



Color: T66301 / T66304 / T66308



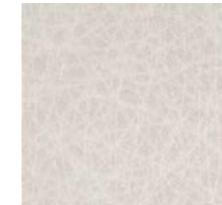
Color: T66304 / T66309



Color: T66301 / T66302



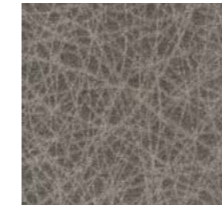
Color: T66301 / T66303 / T66308 / T66309



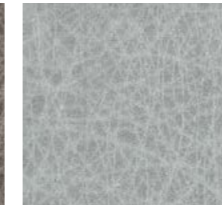
T66301 Sand dollar



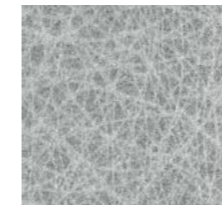
T66302 Tan



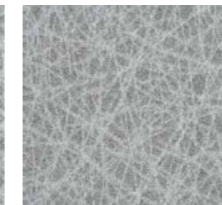
T66303 Coffee



T66305 Beige



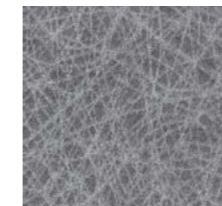
T66304 Cloud



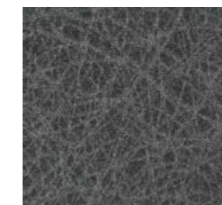
T66306 Oat



T66307 Aegean



T66308 Grey



T66309 Pebble

| | |
|------------------------------|--|
| Style | T663 "Skate" |
| Construction | Hi / Mid / Lo Loop |
| Pile Fibre | nexlon™ Standard + Prisma Premium Solution Dyed Nylon with Stain & Soil Resist technology |
| Dye Method | Solution Dyed |
| Gauge | 1 / 12G |
| Pile Height | 4.5 / 4.0 / 3.0mm |
| Total Thickness | 7.2mm(±0.5mm) |
| Tile size | 500mm x 500mm |
| Total Weight | Approx. 4950g / m ² |
| Secondary Back | Recyclable TUNTEX Commercial Duraback |
| Wear Warranty | Product is warranted not to lose more than 10% pile fibre by weight in normal commercial use within 15 years. |
| Colour Fastness | 15 Year Warranty AATCC 16. Grade 4 - Little or no change. |
| Static Electricity | Permanent Lifetime Protection - less than 2.0 KV. |
| Stain Resistance | Stainshield Treatment: STAINSHIELD™ |
| Soil Resistance | Soil Guard Treatment: SOILGUARD™ |
| Dimensional Stability | Warranted not to change in size by more than 0.5 mm in normal use. Will not dome or dish in normal use. |
| Installation | Tackifier or Releasable adhesive Recommended. |
| Sustainability | All yarns used are Solution dyed to minimise use of water and exclude any effluent production. ISO 14001 and ISO 9001. |

Health Product Declaration (HPD) Third Party verified by U.S. GreenCircle Certified.

Environmental Product Declaration (EPD) certified by UL.

U.S. CRI Green Label Plus Certificate.

Singapore Green Building Council Product Certificate - 4 Ticks "Leader".

Passes ASTM Flammability Test.
Flammability: Passes (ASTM E648)
Smoke Density: Passes (ASTM E662)

Passes AATCC Static Propensity Test.
Static Propensity: ≤3.5 KV (AATCC 134)

Passes the Quality Test of China National Carpet Quality Test Center.

Passes the Flammability Test and Environmental Protection Test of the China National Fire and Construction Quality Surveillance Center.

ISO 9001 Quality Management System.

ISO 14001 Environmental Management System.

ISO 45001 Healthy & Safety Management System.

Passes EN 13501 European Fire Test Bfl.

Passes EN 1307 Wear Rating Class 33 - Heavy Commercial.

