



LINEN

T102

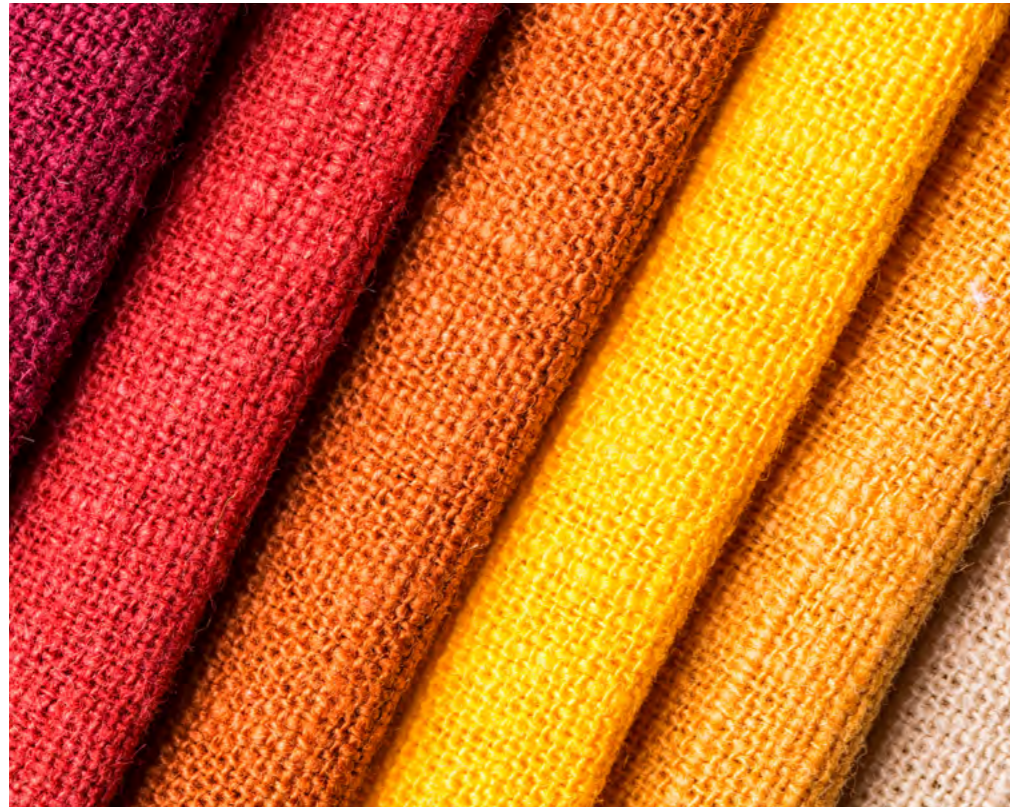


TUNTEX™

LINEN

Linen is known as one of the most durable natural fibers with a very soft and light texture. The way linen fabric is woven provides an exceptional performance in hot and humid weather as well as a unique pattern that brings a sense of freshness and calmness.





Color: T10213 / T10214 / T10215

Perennial

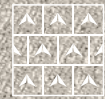
It has been more than ten thousand years since mankind invented linen fabric but the pattern is still relevant. It's minimal but rich, simple but full. It's a design to return to nature, grow with time and connect to life.



Color: T10206 / T10208

Comfort

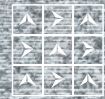
Linen fabrics are commonly used for clothing, bedding and other residential purposes and always create a cozy and comfortable feeling. Inspired by the texture of linen fabric, Tuntex is bringing more warmth and comfort into commercial spaces.



Color: T10201 / T10203



Color: T10203 / T10204



Color: T10206 / T10212



Color: T10204 / T10205



样本中效果图为电脑合成图像，并不代表实际铺装效果。
如有需求，我司可提供多片地毯进行模拟铺装。

All images are computer generated files and may not exactly
represent actual installation appearance and tile seams.
Full tiles can be provided if required.





Color: T10205 / T10214 / T10215 / T10216



Color: T10213 / T10214 / T10215 / T10216

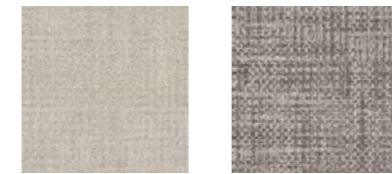




Color: T10207 / T10208 / T10210

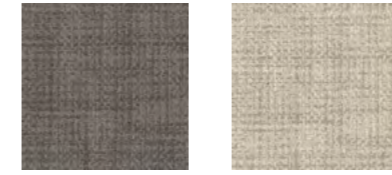


Color: T10208 / T10210



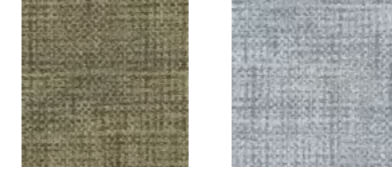
T10201 Sugar Cookie

T10202 Brunette



T10203 Umber

T10204 Tortilla



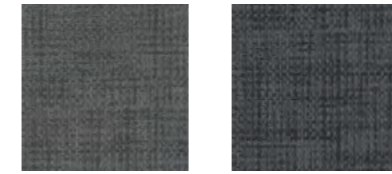
T10205 Cedar

T10206 Cloud



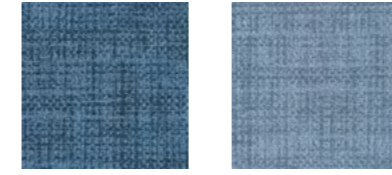
T10207 Coin

T10208 Fossil



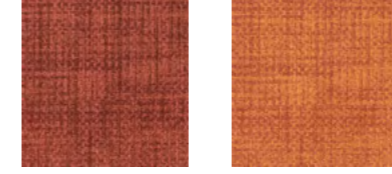
T10209 Shadow

T10210 Pebble



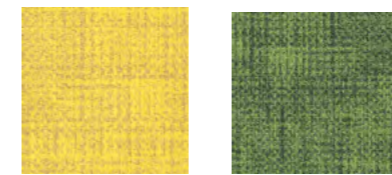
T10211 Aegean

T10212 Slate



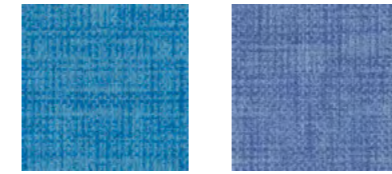
T10213 Blush

T10214 Orange



T10215 Mustard

T10216 Moss



T10217 Azure

T10218 Admiral

| | |
|------------------------------|--|
| Style | T102 "Linen" |
| Construction | Hi / Mid / Lo Loop |
| Pile Fibre | nexlon™ Standard+Quartz Premium Solution Dyed Nylon with Stain & Soil Resist technology |
| Dye Method | Solution Dyed |
| Gauge | 1 / 12G |
| Pile Height | 5.5 / 4.5 / 3.0mm |
| Total Thickness | 7.5mm(±0.5mm) |
| Tile size | 500mm x 500mm |
| Total Weight | Approx. 4950g / m ² |
| Secondary Back | Recyclable TUNTEX Commercial Duraback |
| Wear Warranty | Product is warranted not to lose more than 10% pile fibre by weight in normal commercial use within 15 years. |
| Colour Fastness | 15 Year Warranty AATCC 16. Grade 4 - Little or no change. |
| Static Electricity | Permanent Lifetime Protection - less than 2.0 KV. |
| Stain Resistance | Stainshield Treatment: STAINSHIELD™ |
| Soil Resistance | Soil Guard Treatment: SOILGUARD™ |
| Dimensional Stability | Warranted not to change in size by more than 0.5 mm in normal use. Will not dome or dish in normal use. |
| Installation | Tackifier or Releasable adhesive Recommended. |
| Sustainability | All yarns used are Solution dyed to minimise use of water and exclude any effluent production. ISO 14001 and ISO 9001. |

Health Product Declaration (HPD) Third Party verified by U.S. GreenCircle Certified.

Environmental Product Declaration (EPD) certified by UL.

U.S. CRI Green Label Plus Certificate.

Singapore Green Building Council Product Certificate - 4 Ticks "Leader".

Passes ASTM Flammability Test.
Flammability: Passes (ASTM E648)
Smoke Density: Passes (ASTM E662)

Passes AATCC Static Propensity Test.
Static Propensity: ≤3.5 KV (AATCC 134)

Passes the Quality Test of China National Carpet Quality Test Center.

Passes the Flammability Test and Environmental Protection Test of the China National Fire and Construction Quality Surveillance Center.

ISO 9001 Quality Management System.

ISO 14001 Environmental Management System.

ISO 45001 Healthy & Safety Management System.

Passes EN 13501 European Fire Test Bfl.

Passes EN 1307 Wear Rating Class 33 - Heavy Commercial.



Color: T10201 / T10202 / T10203 / T10207 / T10208



