

# MONTAGE T667

PEAVEY



Epiphone



VALVE SPECIAL

Epiphone

TUNTEX™

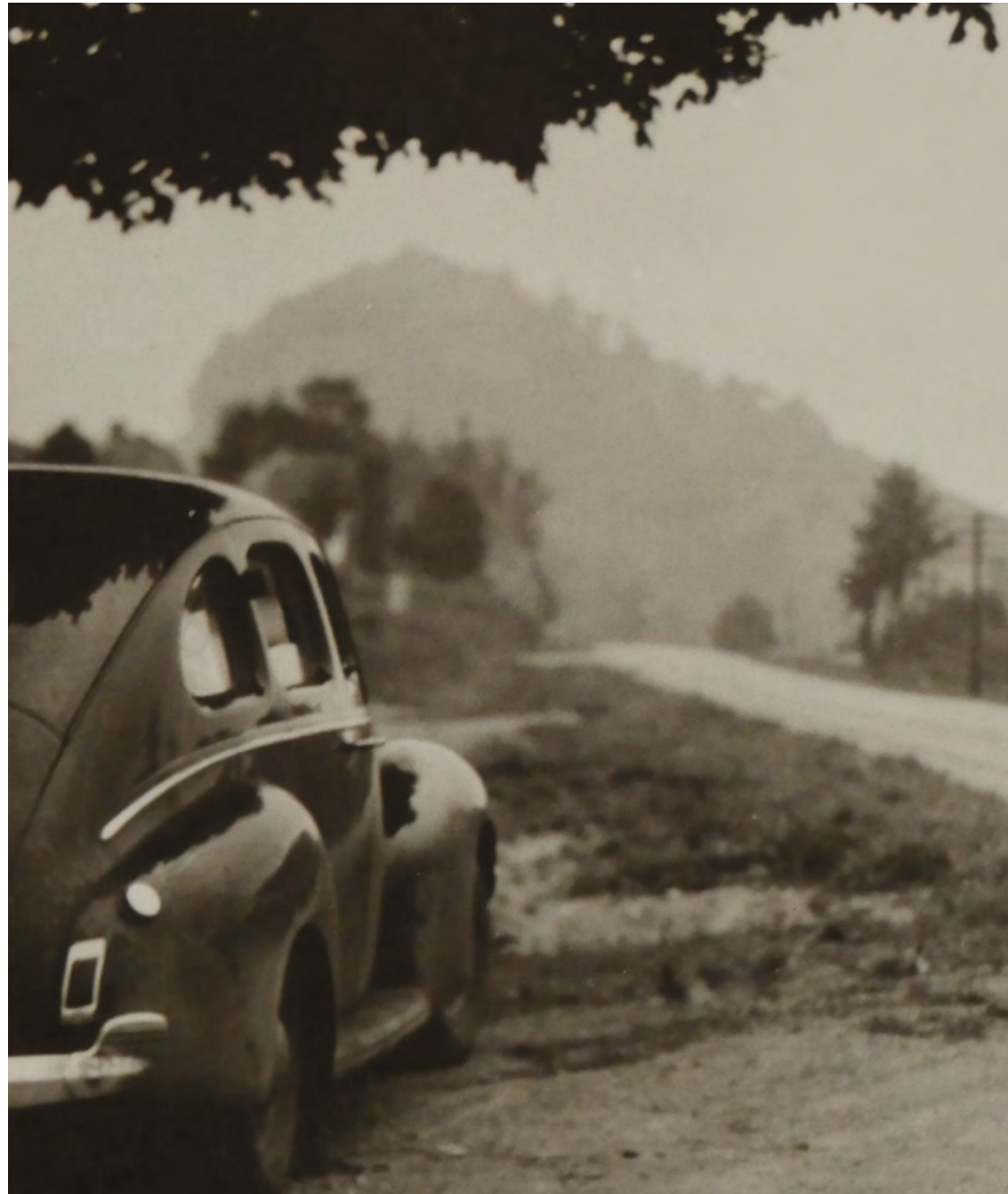
Epiphone

# Montage

In 19th century, the birth of the montage film technique allows different lens to be presented in the same frame. Letting thoughts sway in different times, spaces, and scenes.



Color: T66703 / T66704 / T66705 / T66707



Color: T66702 / T66703

# Reminiscence

Good day. Old times.  
Time goes by fast, but it leaves you a great present--memory.

All images are computer generated files and may not exactly represent actual installation appearance and tile seams. Full tiles can be provided if required.



Color: T66702 / T66703

# Motion Picture

Not necessarily clear. Not necessarily pretty.  
But it is definitely the most precious thing.  
Old memory, Old days, Good times.



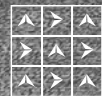
Color: T66704 / T66705 / T66707 / T66709



Color: T66705 / T66707 / T66709







Color: T66704 / T66705 / T66706



Color: T66701 / T66702 / T66703

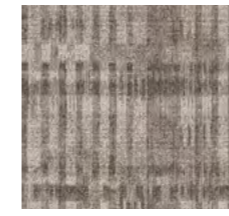




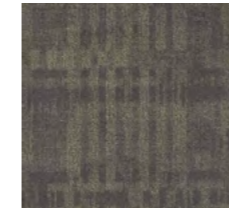
Color: T66701 / T66710



T66701 Hazel wood



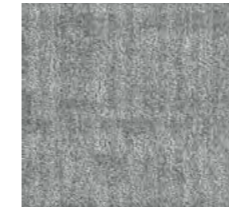
T66702 Carob



T66703 Seaweed



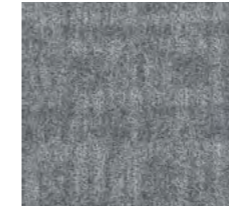
T66706 Anchor



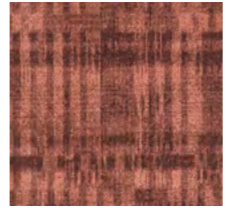
T66704 Cloud



T66707 Shadow



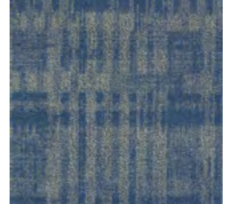
T66705 Coin



T66708 Scarlet



T66709 Pickle



T66710 Aegean

<b>Style</b>	T667 "Montage"
<b>Construction</b>	Hi / Mid / Lo Loop
<b>Pile Fibre</b>	nexlon™ Standard + Prisma + Circular Premium Solution Dyed Nylon with RECYCLED content, Stain and Soil Resist technology
<b>Dye Method</b>	Solution Dyed
<b>Gauge</b>	1 / 12G
<b>Pile Height</b>	5.0 / 4.5 / 3.0mm
<b>Total Thickness</b>	7.3mm( ± 0.5mm)
<b>Tile size</b>	500mm x 500mm
<b>Total Weight</b>	Approx. 4950g / m <sup>2</sup>
<b>Secondary Back</b>	Recyclable TUNTEX Commercial Duraback
<b>Wear Warranty</b>	Product is warranted not to lose more than 10% pile fibre by weight in normal commercial use within 15 years.
<b>Colour Fastness</b>	15 Year Warranty AATCC 16. Grade 4 - Little or no change.
<b>Static Electricity</b>	Permanent Lifetime Protection - less than 2.0 KV.
<b>Stain Resistance</b>	Stainshield Treatment: <b>STAIN</b> SHIELD™
<b>Soil Resistance</b>	Soil Guard Treatment: <b>SOIL</b> GUARD™
<b>Dimensional Stability</b>	Warranted not to change in size by more than 0.5 mm in normal use. Will not dome or dish in normal use.
<b>Installation</b>	Tackifier or Releasable adhesive Recommended.
<b>Sustainability</b>	All yarns used are Solution dyed to minimise use of water and exclude any effluent production. ISO 14001 and ISO 9001.
Health Product Declaration (HPD) Third Party verified by U.S. GreenCircle Certified.	
Environmental Product Declaration (EPD) certified by UL.	
U.S. CRI Green Label Plus Certificate.	
Singapore Green Building Council Product Certificate - 4 Ticks "Leader".	
Passes ASTM Flammability Test. Flammability: Passes (ASTM E648) Smoke Density: Passes (ASTM E662)	
Passes AATCC Static Propensity Test. Static Propensity: ≤3.5 KV (AATCC 134)	
Passes the Quality Test of China National Carpet Quality Test Center.	
Passes the Flammability Test and Environmental Protection Test of the China National Fire and Construction Quality Surveillance Center.	
ISO 9001 Quality Management System.	
ISO 14001 Environmental Management System.	
ISO 45001 Healthy & Safety Management System.	
Passes EN 13501 European Fire Test Bfl.	
Passes EN 1307 Wear Rating Class 33 - Heavy Commercial.	

