

| | |
|------------------------|---|
| Style | T613 "Circuit" |
| Construction | Hi / Mid / Lo Loop |
| Pile Fibre | nexlon™ Premium Solution Dyed Nylon with Stain & Soil Resist Technology |
| Dye Method | Solution Dyed |
| Gauge | 1 / 12 G |
| Pile Height | 5.0 / 4.5 / 3.5 mm |
| Total Thickness | 7.5 mm (±0.5 mm) |
| Tile size | 500 mm x 500 mm |
| Total Weight | Approx. 4950 g/m ² |
| Secondary Back | Recyclable TUNTEX Commercial Duraback |

| | |
|------------------------------|--|
| Wear Warranty | Product is warranted not to lose more than 10% pile fibre by weight in normal commercial use within 15 years. |
| Colour Fastness | 15 Year Warranty AATCC 16, Grade 4 – Little or no change. |
| Static Electricity | Permanent Lifetime Protection – less than 2.0 KV. |
| Stain Resistance | Stainshield Treatment: STAINSHIELD™ |
| Soil Resistance | Soil Guard Treatment: SOILGUARD™ |
| Dimensional Stability | Warranted not to change in size by more than 0.5 mm in normal use. Will not dome or dish in normal use. |
| Installation | Tackifier or Releasable adhesive Recommended. |
| Sustainability | All yarns used are Solution dyed to minimise use of water and exclude any effluent production. ISO 14001 and ISO 9001. |

Health Product Declaration (HPD) Third Party verified by U.S. GreenCircle Certified.

Environmental Product Declaration (EPD) certified by UL.

U.S. CRI Green Label Plus Certificate.

Singapore Green Building Council Product Certificate - 4 Ticks "Leader".

Passes ASTM Flammability Test.

Flammability: Passes (ASTM E648)
Smoke Density: Passes (ASTM E662)

Passes AATCC Static Propensity Test.

Static Propensity: ≤3.5 KV (AATCC 134)

Passes the Quality Test of China National Carpet Quality Test Center.

Passes the Flammability Test and Environmental Protection Test of the China National Fire and Construction Quality Surveillance Center.

ISO9001 Quality Management System.

ISO14001 Environmental Management System.

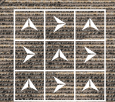
Passes EN 13501 European Fire Test Bfl.

Passes EN 1307 Wear Rating Class 33 - Heavy Commercial.

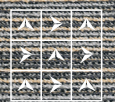


TUNTEX™

All images are computer generated files and may not exactly represent actual installation appearance and tile seams. Full tiles can be provided if required.



Color: T61304



Color: T61310



Color: T61303



Color: T61308/T61310



Color: T61305/T61306